

Programme dashboard template

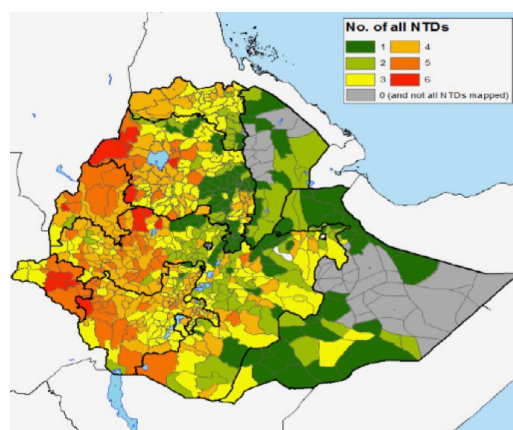
The purpose of the dashboard is to provide at-a-glance information on the need for and successes of the programme to decision-makers who may not be regularly involved in the programme. This can be used as an advocacy tool to communicate the need for the programme, and to seek further political and financial support.

Country

NTDs context

[Insert key information on NTDs in your country. If available, insert maps showing disease prevalence and/or co-endemicity as Ethiopia example here]

Disease	No. of endemic districts/ % prevalence	Population at risk
STH		
Schistosomiasis		
LF		



Other figures:

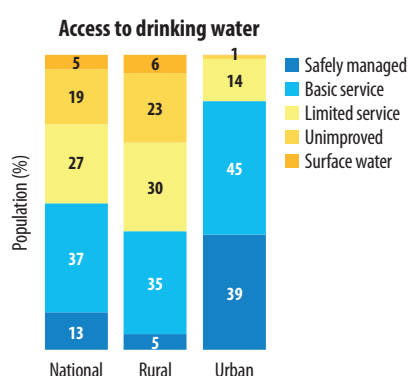
NTD-related disability

Number of cases of other NTDs of interest

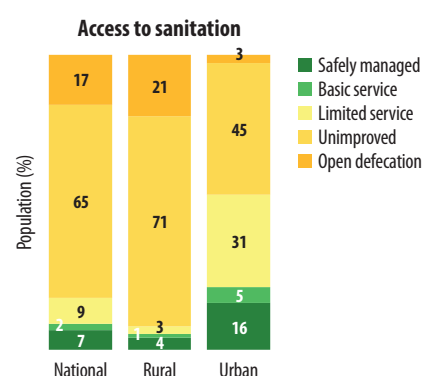
Source: Ethiopia Federal Ministry of Health – Neglected Tropical Diseases Section, and Hygiene and Environmental Health Section.

Transmission/implementation context

[Insert key information on determinants and broader impact of NTDs, such as access to water and sanitation services or trends in access, undernutrition trends, poverty indices etc.]



Source: WHO/UNICEF JMP.



Source: WHO/UNICEF JMP.

(Annual/interim) results

Insert key figures showing progress against the programme success indicators, such as numbers of beneficiaries reached, process indicators, etc.]

- No. / % districts with functioning coordination structures
- Trends in NTD prevalence
- Beneficiaries reached with programme interventions:
 - mass drug administration
 - water supply
 - sanitation and hygiene promotion
 - surgery