

Migrant Health Program

World Health Organization and Royal Thai Government
(WHO-RTG)

Country Cooperation Strategy (CCS)
2022-2026

Presents by HSRI

Background/ Lessons from 2017-2021

- Thailand endorsed the Global Compact for Safe, Orderly and Regular Migration (GCM and GCR)
- UHC achieved in Thai population in 2002, but challenge remains with (undocumented) migrants and refugees
- COVID-19 pandemic gave us a big lesson learnt/echo the gaps on
 - managing health service for non- Thais, access to friendly service and financial barriers
 - multi sectoral approaches needed
 - knowing migrant communities/networks (data and locations)
- Not one country issue-International/cross border issues (sending and receiving countries)

Lessons from 2017-2021

Challenges remain the same

- Health Service: Barriers to access healthcare services
- Health Information: Lack of Migrant Health database system among relevant departments
- Health Policy: Lack of national policy framework as long-term basis
- Health financing: Lack of national regulations/laws to unite the status of migrants outside the SSS system and Migrant Health Insurance system of MOPH by compulsory, leading to the work fragmentation with no authority to supervise
- Health in crisis: the management during COVID-19 pandemic

Goal & Strategic Objectives

- Goal

To ensure the right to health and health equity (access to health service and financial protection) among vulnerable non-Thai population living in Thailand.

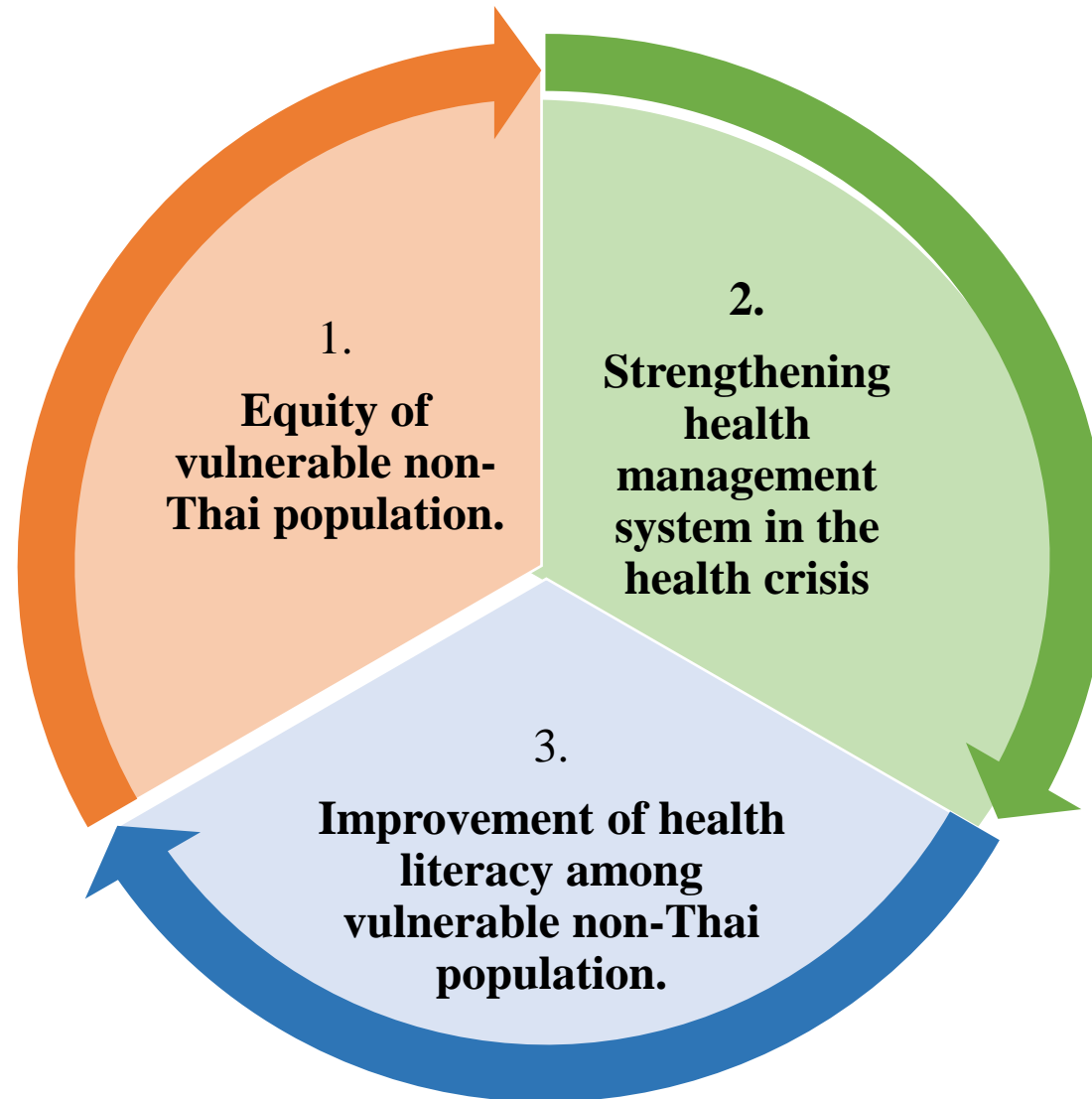
- Strategic Objectives

- 1) To create enabling factors to promote health equity of vulnerable non-Thai population.
- 2) To strengthening migrant health management system
- 3) To improve the health literacy among individual migrant populations and their communities including workplaces.

Focus Areas

Target populations

- Migrant workers and their dependents, people with citizenship problems and refugees.



Objectives

- To creating enabling factors to promote health equity
- To strengthening migrant health management system
- To improving the health literacy

Strategic areas of work

Strategic

**Policy
advocacy**

Networking

Policy research

Areas of work (to be confirmed)	2022	2023	2024	2025	2026
Policy/ legal / central coordination structure framework development					
COVID response/ Post-COVID management					
Monitoring and evaluation mechanism of the health system for migrants at all level					
Health equity assessment					
Cross-border Collaboration/ mechanism					
Health literacy assessment					
Health risk communication					

Action Plan 2022

Policy Advocacy

Multi-sectoral policy dialogue platform

- Legal framework development
- Recommendation for the effective structure for ensuring the intersectoral action
- National policy frameworks
- Border health

National conference (border health issue)

Networking and social movement

Network capacity building supporting

- KM (Post covid management)

Consultative meeting

- Development of border and migrant health

Action research grants

- M&E mechanism development

Policy research

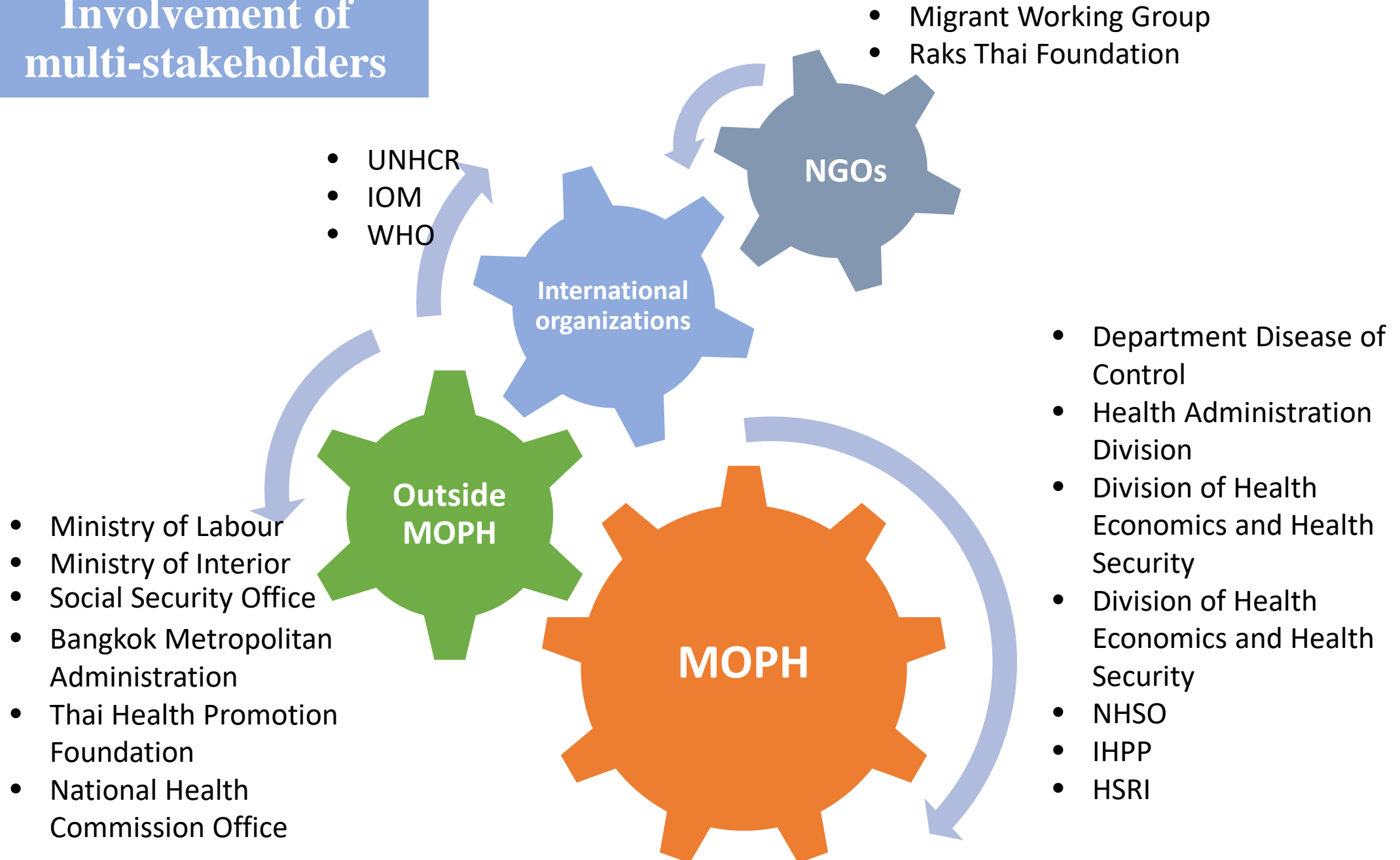
- Border health services system improvement.
- Health equity analysis on the health of migrants in comparison with Thais during health emergency situation



Expected Outcomes (multi-sectoral action)

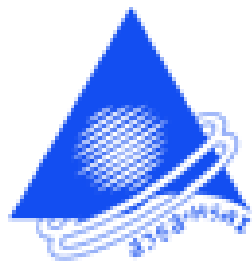
1. Coherent policies, legal and regulatory frameworks
2. The improvement of health management system for vulnerable non-Thai population
3. Health literacy among individual migrant populations and their communities

Involvement of multi-stakeholders



Estimated Budget (2022-2026)

	2022	2023	2024	2025	2026	total
Strategy 1	650,000	650,000	650,000	650,000	650,000	3,250,000
Strategy 2	2,924,000	2,924,000	2,924,000	2,924,000	2,924,000	14,620,000
Strategy 3	3,240,000	3,240,000	3,240,000	3,240,000	3,240,000	16,200,000
Program administrative cost	400,000	400,000	400,000	400,000	400,000	2,000,000
Personnel	1,704,000	1,704,000	1,704,000	1,704,000	1,704,000	8,520,000
Sub-total operation cost	8,918,000	8,918,000	8,918,000	8,918,000	8,918,000	44,590,000
Institutional overhead (10%)	891,800	891,800	891,800	891,800	891,800	4,459,000
Grand total	9,809,800	9,809,800	9,809,800	9,809,800	9,809,800	49,049,000



สถาบันวิจัยระบบสาธารณสุข (สวรส.)
Health Systems Research Institute (HSRI)