

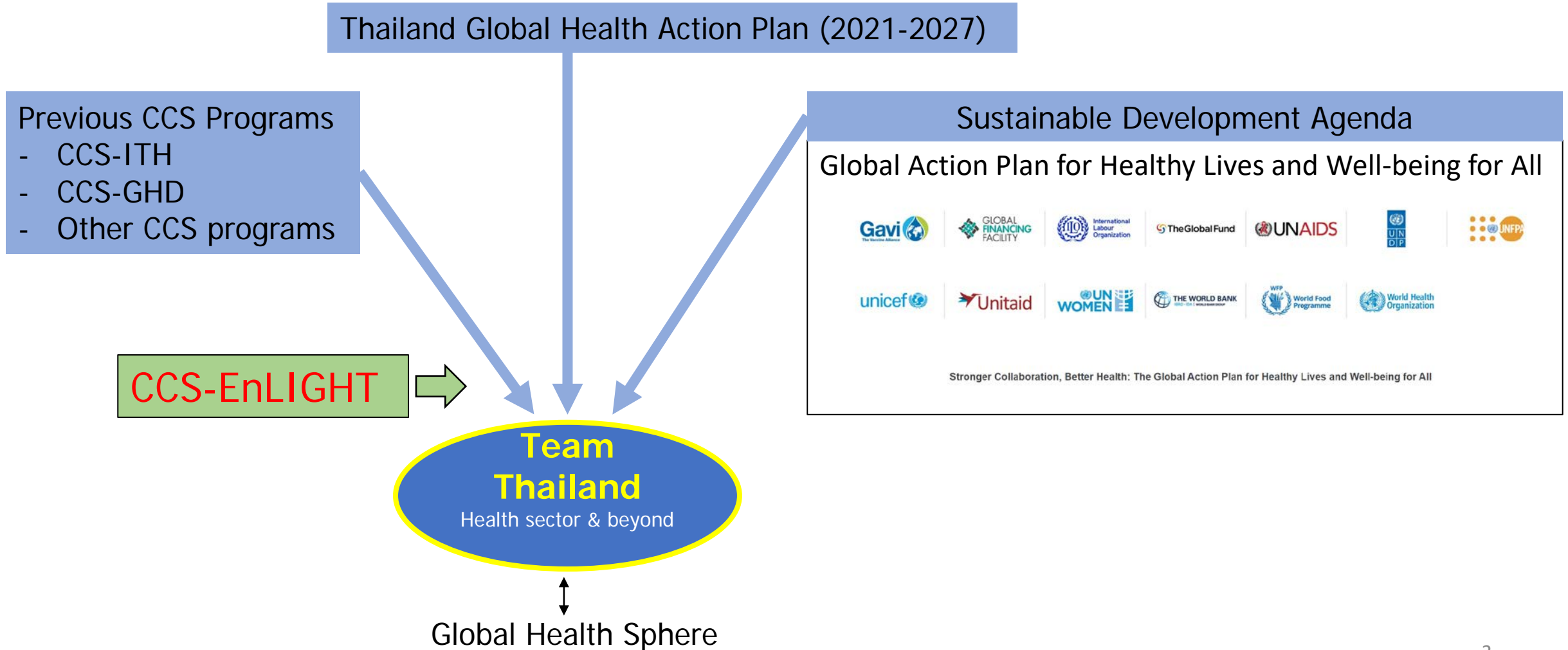


Enhancing Leadership in Global Health-Thailand (EnLIGHT)

Dr. Thaksaphon (Mek) Thamarangsi
Dr. Warisa Panichkriangkrai
on behalf of the EnLIGHT CORE Group

Three streams of opportunities

Demand for collective capacity boost to maintain and strengthen Thailand's leadership and proactive roles in global Health terrain

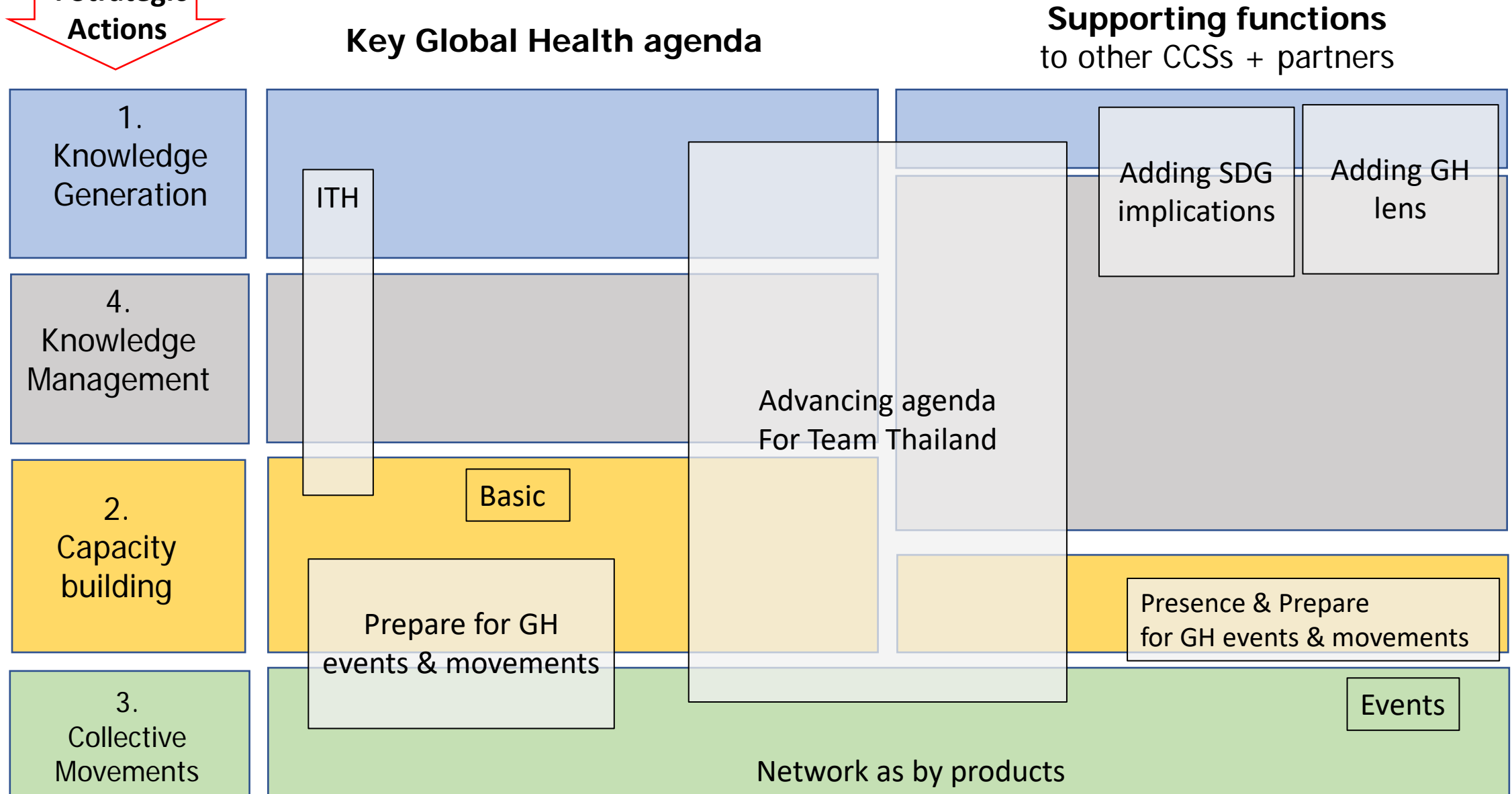


2x4 Model

2 Core functions

4 Strategic
Actions

Conceptual Framework



Vision



Demonstrated **leadership** and **contribution** of Thailand in **global health mechanisms**

General objective



To enhance Team Thailand's **collective capacity** for collective **international movements** towards good governance for sustainable health

Specific Objectives



#1: Evidence to support **preparedness** for global health **engagement**



#2: Capacity of individuals and organizations for global health movements



#3: Coordinated actions for Thailand's movements

Strategic actions



#1: K. generation



#2 Capacity building



#3 Movements



#4 K. management

5 C Principles



Collectiveness



Collaboration



Compatibility



Catalysis



Constancy

1. **Quality** and **availability** of *knowledge-in-demand* to support global/regional movements

2. Expanded *platforms for movements*

3. Mobilized *system capacity*

4. Promoted *collaborations* at three levels

- Across CCS programmes
- Among domestic partners/actors
- With other countries and international agencies

Expected outcomes



Impacts & Milestone

- **Demonstrated successes** of Thailand for global health movements through *multisectoral collaboration*
- **Demonstrated value-added** to CCS programs , especially on SDG and GH implications

Estimated budget 56.25 million Baht for 5 years (equally distributed to 11.25 m per year)

SA	Activities		Output		Quantity x budget per unit	Budget
1. Knowledge generation	1.1	Primary Research	1.1.1	Research report	2 reports x 500,000 Baht	1,000,000
	1.2	Secondary research	1.2.1	Technical paper/policy brief/factsheet	5 pieces x 100,000 Baht	250,000
2.Capacity building	2.1	Training media/materials	2.1.1	Book	1 book x 100,000 Baht	100,000
			2.1.2	E-learning material/module	2 pieces x 50,000 Baht	100,000
	2.2	workshop	2.2.1	Workshop	2 workshops x 300,000 Baht	600,000
	2.3	Global health journal club	2.3.1	Journal club	6 times x 10,000 Baht	60,000
	2.4	Major conferences	2.4.1	Attached event/satellite event	3 events x 300,000 Baht	900,000
			2.4.2	Standalone event	1 event x 2,000,000 Baht	2,000,000
	2.5	Global Health Fellowship program	2.5.1	GHFP	1 fellowship program x 600,000 Baht	600,000
3.GH movements	3.1	Technical preparation for selective movement	3.1.1	Position paper	3 papers x 80,000 Baht	240,000
	3.2	GH experience	3.2.1	GH event participation	15 persons x 100,000 Baht	1,500,000
4.Knowledge management	4.1	Data source development	4.1.1	Electronic files	15 files x 8,000 Baht	120,000
	4.2	Communication channels	4.2.1	Graphic and text media	24 pieces x 5,000 Baht	120,000
			4.2.2	VDO format	3 pieces x 55,000 Baht	165,000
			4.2.3	Audio format	3 pieces x 5,000 Baht	15,000
	4.3	Decoding Thai expertise/experience	4.3.1	Semi-technical report	2 reports x 80,000 Baht	160,000
	4.4	Maintenance of Resource center website	4.3.1	1 website maintainance	1 website x 50,000	50,000
5.Programme management and coordination	5.1	Programme management	5.1.1	EnLIGHT technical team		2,076,000
			5.1.3	Partner individual/team networking	5 times x 5,000 Baht	25,000
	5.2	CCS program coordination/networking	5.2.1	Stakeholder dialogue	6 times x 15,000 Baht	90,000
	5.3	Materials			12 months x 5,000 baht	60,000
	5.4	Overhead (10%)				1,023,100
Total per year					11,254,100	

Thank you

