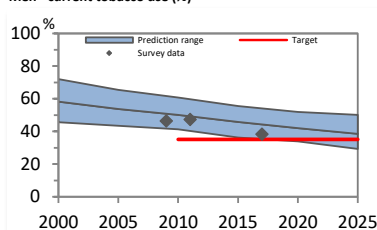


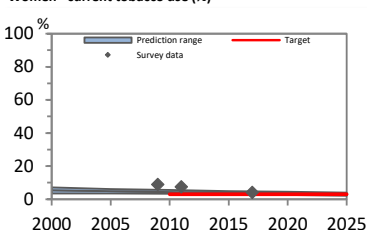
Table 1. Fitted trends in current tobacco use among persons aged 15 years and older

Table 1: Fitted trends in current tobacco use among persons aged 15 years and older										
Year	CURRENT TOBACCO USE (%)									
	Men			Women			Both sexes			
	Lower 95% credible limit	Point estimate	Upper 95% credible limit	Lower 95% credible limit	Point estimate	Upper 95% credible limit	Lower 95% credible limit	Point estimate	Upper 95% credible limit	Estimated no. of current tobacco users
2000	45.7	58.2	72.1	3.6	5.4	7.2	24.2	31.3	38.9	14,902,600
2005	43.4	53.8	65.5	3.4	4.8	6.2	23.0	28.8	35.2	14,746,200
2010	41.3	50.2	60.7	3.3	4.3	5.6	21.9	26.8	32.6	14,437,200
2015	36.3	45.8	55.5	2.8	3.9	4.9	19.2	24.4	29.6	13,627,700
2020	34.0	42.0	52.0	2.6	3.5	4.6	17.9	22.3	27.7	12,774,900
2025	29.3	38.5	50.2	2.1	3.1	4.1	15.4	20.3	26.5	11,857,900
30% relative reduction target		35.1			3.0			18.8		

Men - current tobacco use (%)



Women - current tobacco use (%)



Both sexes - current tobacco use (%)

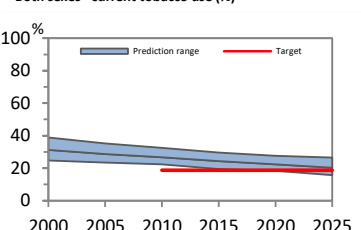
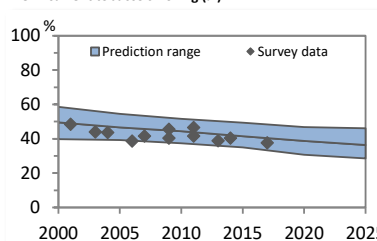


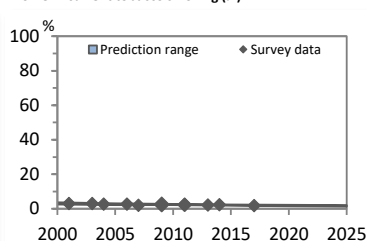
Table 2. Fitted trends in current tobacco smoking among persons aged 15 years and older

Year	CURRENT TOBACCO SMOKING (%)										Estimated no. of current tobacco smokers
	Men			Women			Both sexes				
	Lower 95% credible limit	Point estimate	Upper 95% credible limit	Lower 95% credible limit	Point estimate	Upper 95% credible limit	Lower 95% credible limit	Point estimate	Upper 95% credible limit		
2000	39.9	49.5	58.6	2.4	3.0	3.7	20.7	25.8	30.6	12,291,600	
2005	39.2	46.7	54.5	2.2	2.7	3.2	20.3	24.2	28.3	12,420,700	
2010	37.3	44.3	51.6	2.0	2.4	2.8	19.3	22.9	26.7	12,362,300	
2015	34.9	41.5	49.3	1.7	2.1	2.5	18.0	21.3	25.4	11,938,500	
2020	30.7	38.7	46.9	1.5	1.9	2.3	15.7	19.8	24.1	11,374,800	
2025	28.6	36.4	46.2	1.2	1.6	2.1	14.5	18.6	23.6	10,824,400	

Men - current tobacco smoking (%)



Women - current tobacco smoking (%)



Both sexes - current tobacco smoking (%)

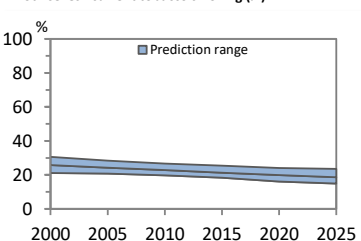
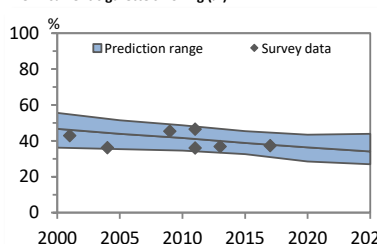


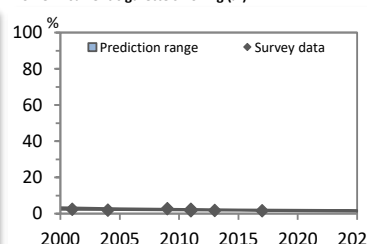
Table 3. Fitted trends in current cigarette smoking among persons aged 15 years and older

CURRENT CIGARETTE SMOKING (%)										
Year	Men			Women			Both sexes			Estimated no. of current cigarette smokers
	Lower 95% credible limit	Point estimate	Upper 95% credible limit	Lower 95% credible limit	Point estimate	Upper 95% credible limit	Lower 95% credible limit	Point estimate	Upper 95% credible limit	
2000	36.1	46.7	55.6	2.2	2.8	3.5	18.8	24.3	29.0	11,559,800
2005	35.3	43.9	51.4	2.0	2.5	3.0	18.3	22.7	26.7	11,662,700
2010	34.6	41.6	48.7	1.8	2.2	2.6	17.9	21.5	25.2	11,575,600
2015	32.6	38.8	45.4	1.6	2.0	2.3	16.7	19.9	23.4	11,153,700
2020	28.5	36.4	43.5	1.3	1.7	2.1	14.6	18.6	22.3	10,674,700
2025	27.0	34.1	43.9	1.1	1.5	1.9	13.7	17.4	22.3	10,122,000

Men - current cigarette smoking (%)



Women - current cigarette smoking (%)



Both sexes - current cigarette smoking (%)

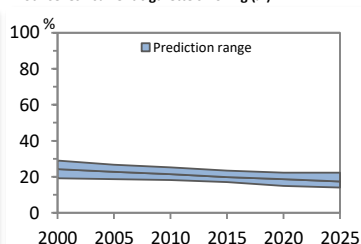
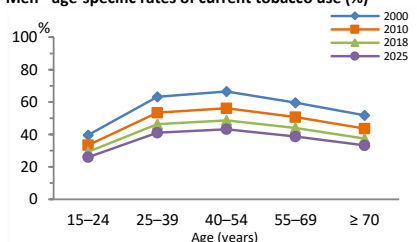


Table 4. Fitted age-specific rates of current tobacco use, 2000, 2010, 2018 and 2025

Age (years)	Men				Women				Both sexes			
	2000	2010	2018	2025	2000	2010	2018	2025	2000	2010	2018	2025
15–24	39.7	33.4	29.3	26.0	2.0	1.4	1.1	0.9	21.1	17.6	15.5	13.8
25–39	63.3	53.5	46.4	41.1	3.7	2.7	2.1	1.6	32.7	27.8	24.1	21.5
40–54	66.5	56.2	48.7	43.2	6.8	5.0	3.8	3.1	36.1	29.7	25.4	22.4
55–69	59.6	50.8	44.1	38.8	10.1	7.3	5.6	4.5	33.5	27.8	23.6	20.4
≥ 70	51.9	43.6	37.5	33.3	10.8	7.8	6.0	4.7	29.0	23.4	19.4	16.8

Men - age-specific rates of current tobacco use (%)



Women - age-specific rates of current tobacco use (%)

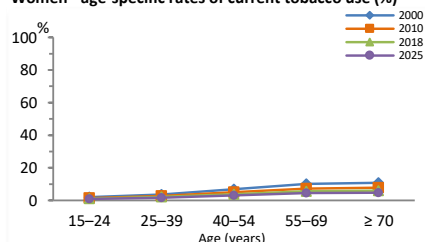


Table 5. Nationally representative population-based surveys used to calculate above estimates of tobacco use (most recent six surveys)

Survey name	Survey year	Age (years)	Tobacco use		Tobacco smoking		Cigarette smoking		Smokeless use	
			Men	Women	Men	Women	Men	Women	Men	Women
The Smoking and Drinking Behaviour Survey	2017	15+	38.3	4.3	37.7	1.7	37.4	1.6	1.5	2.7
The Smoking and Drinking Behaviour Survey	2014	15+	40.5	2.2	2.5	3.9
Health and Welfare Survey	2013	15+	39.0	2.1	36.9	1.8
Global Adult Tobacco Survey	2011	15+	47.2	7.6	46.6	2.6	46.5	2.4	1.1	5.2
The Smoking and Drinking Behaviour Survey	2011	15+	41.7	2.1	36.0	1.7
Global Adult Tobacco Survey (GATS) - Thailand	2009	15+	46.4	9.1	45.6	3.1	45.4	2.8	1.3	6.3

Table 6. Nationally representative school-based surveys (most recent six surveys)

Survey name	Survey year	Age (years)	Tobacco use		Tobacco smoking		Cigarette smoking		Smokeless use	
			Boys	Girls	Boys	Girls	Boys	Girls	Boys	Girls
Global Youth Tobacco Survey	2015	13-15	21.8	8.1	20.7	7.1	17.2	5.2	4.1	1.3
Global School-Based Student Health Survey	2015	13-15	19.7	7.6	14.7	4.6
International Tobacco Control Policy Thailand Youth Survey	2013	13-17	25.5	1.4
International Tobacco Control Survey-Southeast Asia (Thailand)	2012	13-17	25.5	1.4
International Tobacco Control Policy Thailand Youth Survey	2011	13-17	27.8	1.5
Global Youth Tobacco Survey	2009	13-15	26.9	9.2	20.1	3.8	7.3	4.1

Table 7. National surveillance planning

An effective monitoring system needs at least one nationally representative population-based survey and one school-based survey among adolescents to be completed every five years. Based on surveys already completed, future surveys should be run in or before the years indicated below.

	2019	2020	2021	2022	2023	2024	2025	2026	2027	2028	2029	2030
Population-based survey				X					X			
School-based adolescent survey		X					X					X

Key messages

WHO estimates that, in 2010, about 27% of Thailand's population aged 15 years and older were current tobacco users (approximately 14,437,200 people). If tobacco control efforts continue at the same intensity, WHO projects that in 2025 around 20% of the population aged 15 years and older (approximately 11,857,900 people) will be tobacco users.

WHO estimates that, in 2010, about 50% of men and about 4% of women aged 15 years and older in Thailand were using tobacco either daily or occasionally. WHO projects that by 2025 the rate will be approximately 39% for men and 3% for women.

In 2010, the highest rate of smoking among men was seen in the age-group 40–54, and among women in the age-group ≥ 70.

WHO Member States adopted a voluntary global target to reduce use of tobacco (smoking and smokeless combined) by 30% by 2025. If Thailand adopts this global target, the results indicate that, based on current trends, Thailand is unlikely to achieve the target.