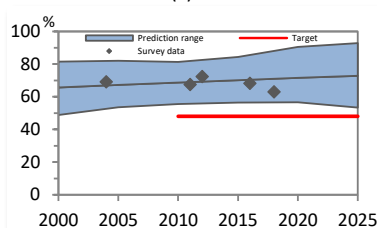


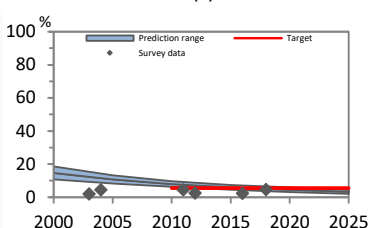
Table 1. Fitted trends in current tobacco use among persons aged 15 years and older

Table 1: Fitted trends in current tobacco use among persons aged 15 years and older										
Year	CURRENT TOBACCO USE (%)									
	Men			Women			Both sexes			
	Lower 95% credible limit	Point estimate	Upper 95% credible limit	Lower 95% credible limit	Point estimate	Upper 95% credible limit	Lower 95% credible limit	Point estimate	Upper 95% credible limit	Estimated no. of current tobacco users
2000	48.8	65.7	81.5	10.7	14.6	18.6	29.7	40.0	49.9	58,674,300
2005	53.6	67.2	82.0	8.3	10.8	13.3	30.9	38.9	47.6	61,695,600
2010	55.6	68.6	81.3	6.4	7.9	9.7	31.0	38.3	45.5	65,755,900
2015	56.5	70.1	84.3	4.5	5.9	7.5	30.5	38.0	45.9	70,789,000
2020	56.7	71.6	90.6	3.2	4.5	6.1	29.9	38.0	48.3	76,232,500
2025	53.4	72.8	92.9	2.1	3.4	4.8	27.7	38.0	48.8	80,963,200
30% relative reduction target	48.0			5.5			26.8			

Men - current tobacco use (%)



Women - current tobacco use (%)



Both sexes - current tobacco use (%)

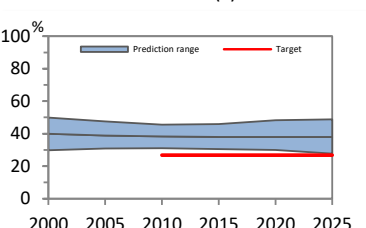
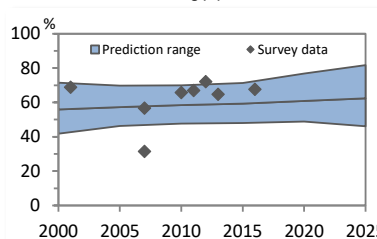


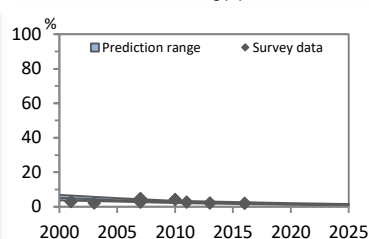
Table 2. Fitted trends in current tobacco smoking among persons aged 15 years and older

Year	CURRENT TOBACCO SMOKING (%)										Estimated no. of current tobacco smokers
	Men			Women			Both sexes				
	Lower 95% credible limit	Point estimate	Upper 95% credible limit	Lower 95% credible limit	Point estimate	Upper 95% credible limit	Lower 95% credible limit	Point estimate	Upper 95% credible limit		
2000	41.8	55.9	71.5	3.7	5.2	6.9	22.6	30.4	39.0	44,623,000	
2005	46.3	57.3	69.9	3.0	3.8	4.9	24.5	30.5	37.3	48,346,500	
2010	47.8	58.4	69.9	2.2	2.8	3.5	25.0	30.6	36.7	52,597,400	
2015	48.0	59.4	71.4	1.6	2.1	2.8	24.8	30.7	37.1	57,268,100	
2020	49.0	60.9	76.8	1.1	1.6	2.1	25.0	31.2	39.4	62,554,500	
2025	46.2	62.4	81.7	0.8	1.2	1.7	23.4	31.7	41.6	67,551,700	

Men - current tobacco smoking (%)



Women - current tobacco smoking (%)



Both sexes - current tobacco smoking (%)

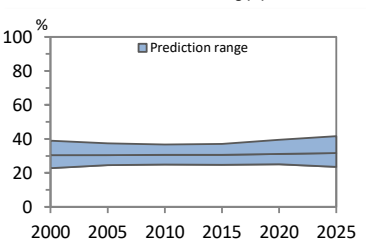
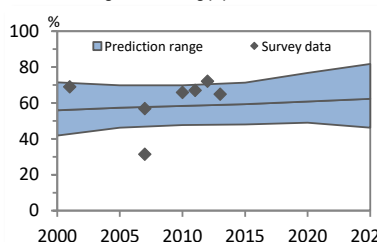


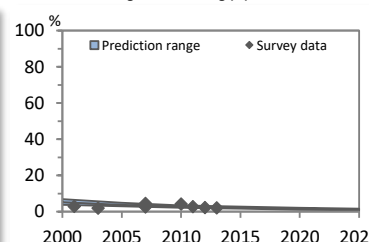
Table 3. Fitted trends in current cigarette smoking among persons aged 15 years and older

Year	CURRENT CIGARETTE SMOKING (%)										Estimated no. of current cigarette smokers
	Men			Women			Both sexes				
	Lower 95% credible limit	Point estimate	Upper 95% credible limit	Lower 95% credible limit	Point estimate	Upper 95% credible limit	Lower 95% credible limit	Point estimate	Upper 95% credible limit		
2000	41.8	55.9	71.5	3.7	5.2	6.9	22.6	30.4	39.0	44,623,000	
2005	46.3	57.3	69.9	3.0	3.8	4.9	24.5	30.5	37.3	48,346,500	
2010	47.8	58.4	69.9	2.2	2.8	3.5	25.0	30.6	36.7	52,597,400	
2015	48.0	59.4	71.4	1.6	2.1	2.8	24.8	30.7	37.1	57,268,100	
2020	49.0	60.9	76.8	1.1	1.6	2.1	25.0	31.2	39.4	62,554,500	
2025	46.2	62.4	81.7	0.8	1.2	1.7	23.4	31.7	41.6	67,551,700	

Men - current cigarette smoking (%)



Women - current cigarette smoking (%)



Both sexes - current cigarette smoking (%)

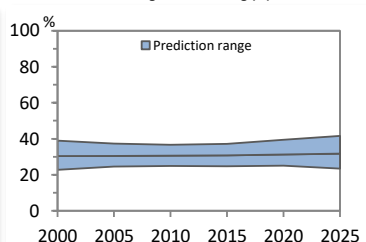
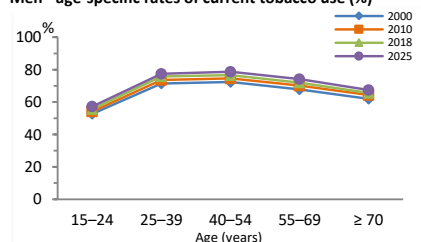


Table 4. Fitted age-specific rates of current tobacco use, 2000, 2010, 2018 and 2025

Age (years)	Men				Women				Both sexes			
	2000	2010	2018	2025	2000	2010	2018	2025	2000	2010	2018	2025
15–24	52.7	54.1	55.6	57.2	6.3	3.3	2.0	1.2	29.8	28.9	29.5	30.1
25–39	71.5	73.6	75.7	77.4	10.0	5.2	3.2	2.0	41.0	39.6	39.5	40.3
40–54	72.4	74.6	76.6	78.7	18.7	9.9	5.9	3.7	45.5	42.6	41.5	41.3
55–69	67.8	70.1	72.0	74.1	31.0	16.1	9.5	6.0	48.3	43.0	40.6	39.4
≥ 70	62.0	64.3	65.6	67.5	40.5	21.2	12.6	7.9	49.8	39.6	35.1	34.2

Men - age-specific rates of current tobacco use (%)



Women - age-specific rates of current tobacco use (%)

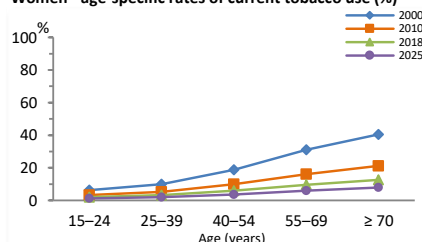


Table 5. Nationally representative population-based surveys used to calculate above estimates of tobacco use (most recent six surveys)

Survey name	Survey year	Age (years)	Tobacco use		Tobacco smoking		Cigarette smoking		Smokeless use	
			Men	Women	Men	Women	Men	Women	Men	Women
Basic Health Research (RISKESDAS)	2018	15+	62.9	4.8
SURKESNAS (National Household Health Survey)	2016	15+	68.1	2.5	67.7	1.9
Basic Health Research (RISKESDAS)	2013	15+	64.9	2.1	64.9	2.1	3.9	4.8
Demographic and Health Survey	2012	15-59 (men), 15-49	72.3	2.7	72.2	...	72.1	2.3	0.5	0.4
Global Adult Tobacco Survey (GATS)	2011	15+	67.4	4.5	67.0	2.7	67.0	2.7	1.5	2.0
Basic Health Research (RISKESDAS)	2010	15+	65.9	4.2	65.9	4.2

Table 6. Nationally representative school-based surveys (most recent six surveys)

Survey name	Survey year	Age (years)	Tobacco use		Tobacco smoking		Cigarette smoking		Smokeless use	
			Boys	Girls	Boys	Girls	Boys	Girls	Boys	Girls
Global School-Based Student Health Survey	2015	13-15	23.0	2.4	21.4	1.5
Global Youth Tobacco Survey	2014	13-15	36.2	4.3	35.3	3.4	33.9	2.5	3.0	1.1
Global Youth Tobacco Survey (Java and Sumatra)	2009	13-15	41.0	6.2	41.0	3.5	3.3	2.3
Global School-Based Student Health Survey	2007	13-15	23.4	1.7	22.1	0.9
Global Youth Tobacco Survey (Java and Sumatra)	2006	13-15	24.1	4.0	23.9	1.9
...

Table 7. National surveillance planning

An effective monitoring system needs at least one nationally representative population-based survey and one school-based survey among adolescents to be completed every five years. Based on surveys already completed, future surveys should be run in or before the years indicated below.

	2019	2020	2021	2022	2023	2024	2025	2026	2027	2028	2029	2030
Population-based survey					X					X		
School-based adolescent survey		X					X					X

Key messages

WHO estimates that, in 2010, about 38% of Indonesia's population aged 15 years and older were current tobacco users (approximately 65,755,900 people). If tobacco control efforts continue at the same intensity, WHO projects that in 2025 around 38% of the population aged 15 years and older (approximately 80,963,200 people) will be tobacco users.

WHO estimates that, in 2010, about 69% of men and about 8% of women aged 15 years and older in Indonesia were using tobacco either daily or occasionally. WHO projects that by 2025 the rate will be approximately 73% for men and 3% for women.

In 2010, the highest rate of smoking among men was seen in the age-group 40–54, and among women in the age-group ≥ 70.

WHO Member States adopted a voluntary global target to reduce use of tobacco (smoking and smokeless combined) by 30% by 2025. If Indonesia adopts this global target, the results indicate that, based on current trends, Indonesia is unlikely to achieve the target.