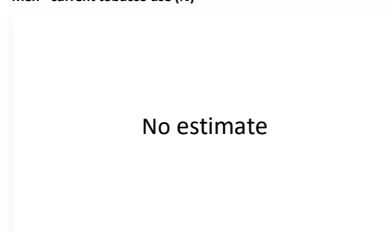


Table 1. Fitted trends in current tobacco use among persons aged 15 years and older

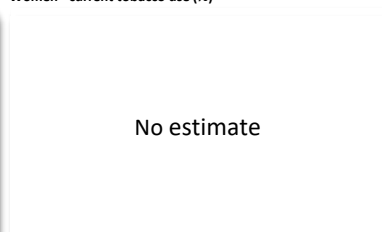
Table 1: Fitted trends in current tobacco use among persons aged 15 years and older											
Year	CURRENT TOBACCO USE (%)										
	Men			Women			Both sexes				
	Lower 95% credible limit	Point estimate	Upper 95% credible limit	Lower 95% credible limit	Point estimate	Upper 95% credible limit	Lower 95% credible limit	Point estimate	Upper 95% credible limit	Estimated no. of current tobacco users	
2000	
2005	
2010	
2015	
2020	
2025	
30% relative reduction target											

30% relative reduction target

Men - current tobacco use (%)



Women - current tobacco use (%)



Both sexes - current tobacco use (%)

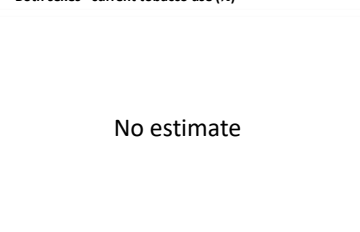
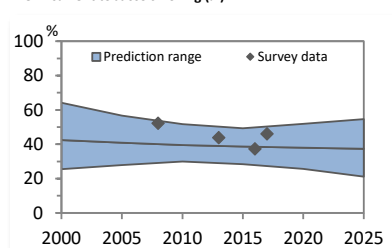


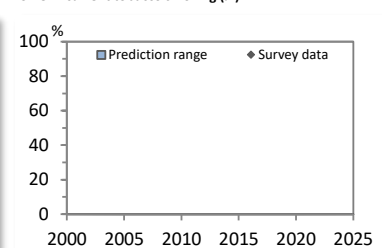
Table 2. Fitted trends in current tobacco smoking among persons aged 15 years and older

Year	CURRENT TOBACCO SMOKING (%)										Estimated no. of current tobacco smokers
	Men			Women			Both sexes				
	Lower 95% credible limit	Point estimate	Upper 95% credible limit	Lower 95% credible limit	Point estimate	Upper 95% credible limit	Lower 95% credible limit	Point estimate	Upper 95% credible limit		
2000	25.5	42.4	64.2	0.0	0.0	0.0	12.2	20.3	30.7	3,432,500	
2005	27.9	40.8	56.6	0.0	0.0	0.0	13.4	19.6	27.2	3,518,200	
2010	30.0	39.6	51.8	0.0	0.0	0.0	14.5	19.1	25.0	3,613,200	
2015	28.4	38.7	49.3	0.0	0.0	0.0	13.7	18.7	23.8	3,707,400	
2020	25.6	38.0	51.9	0.0	0.0	0.0	12.4	18.4	25.1	3,783,700	
2025	21.1	37.4	54.6	0.0	0.0	0.0	10.2	18.1	26.4	3,806,900	

Men - current tobacco smoking (%)



Women - current tobacco smoking (%)



Both sexes - current tobacco smoking (%)

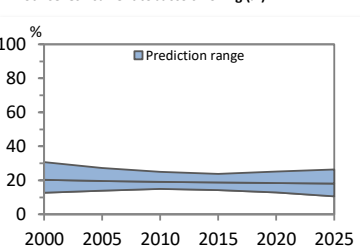
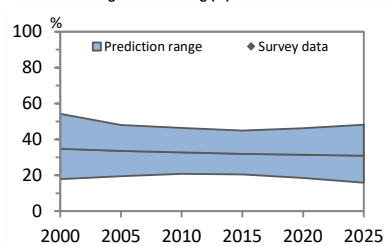


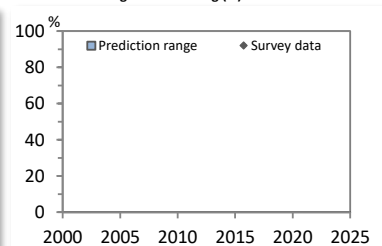
Table 3. Fitted trends in current cigarette smoking among persons aged 15 years and older

CURRENT CIGARETTE SMOKING (%)											
Year	Men			Women			Both sexes			Estimated no. of current cigarette smokers	
	Lower 95% credible limit	Point estimate	Upper 95% credible limit	Lower 95% credible limit	Point estimate	Upper 95% credible limit	Lower 95% credible limit	Point estimate	Upper 95% credible limit		
2000	17.9	34.8	54.2	0.0	0.0	0.0	8.6	16.7	26.0	2,817,600	
2005	19.5	33.6	48.1	0.0	0.0	0.0	9.4	16.2	23.1	2,899,400	
2010	20.7	32.8	46.3	0.0	0.0	0.0	10.0	15.8	22.3	2,997,100	
2015	20.4	32.0	45.0	0.0	0.0	0.0	9.9	15.5	21.7	3,065,100	
2020	18.4	31.4	46.1	0.0	0.0	0.0	8.9	15.2	22.3	3,118,600	
2025	15.8	30.9	48.1	0.0	0.0	0.0	7.7	15.0	23.3	3,146,300	

Men - current cigarette smoking (%)



Women - current cigarette smoking (%)



Both sexes - current cigarette smoking (%)

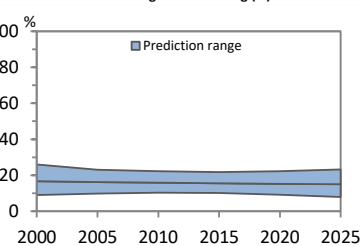
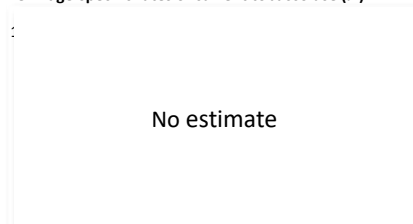


Table 4. Fitted age-specific rates of current tobacco use, 2000, 2010, 2018 and 2025

Age (years)	Men				Women				Both sexes			
	2000	2010	2018	2025	2000	2010	2018	2025	2000	2010	2018	2025
15–24
25–39
40–54
55–69
≥ 70

Men - age-specific rates of current tobacco use (%)



Women - age-specific rates of current tobacco use (%)

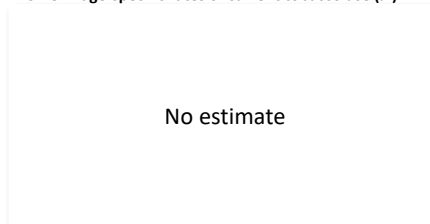


Table 5. Nationally representative population-based surveys used to calculate above estimates of tobacco use (most recent six surveys)

Survey name	Survey year	Age (years)	Tobacco use		Tobacco smoking		Cigarette smoking		Smokeless use	
			Men	Women	Men	Women	Men	Women	Men	Women
National Adult Tobacco Survey	2017	15+	46.1	0.0	46.1	0.0
KAP survey on cessation of smoking (daily smoking only)	2016	17+	37.3	0.0
National Adult Tobacco Survey	2013	17+	43.9	0.0
Survey of NCD risk factors based on STEPwise approach	2008	25–64	52.3	0.0
...
...

Table 6. Nationally representative school-based surveys (most recent six surveys)

Survey name	Survey year	Age (years)	Tobacco use		Tobacco smoking		Cigarette smoking		Smokeless use	
			Boys	Girls	Boys	Girls	Boys	Girls	Boys	Girls
No known surveys
...
...
...
...
...

Table 7. National surveillance planning

An effective monitoring system needs at least one nationally representative population-based survey and one school-based survey among adolescents to be completed every five years. Based on surveys already completed, future surveys should be run in or before the years indicated below.

	2019	2020	2021	2022	2023	2024	2025	2026	2027	2028	2029	2030
Population-based survey				X					X			
School-based adolescent survey												

Key messages

WHO estimates that, in 2010, about 19% of Democratic People's Republic of Korea's population aged 15 years and older were current smokers (approximately 3,613,200 people). If tobacco control efforts continue at the same intensity, WHO projects that in 2025 around 18% of the population aged 15 years and older (approximately 3,806,900 people) will be smokers.

WHO estimates that, in 2010, about 40% of men and about 0% of women aged 15 years and older in Democratic People's Republic of Korea were smoking either daily or occasionally. WHO projects that by 2025 the rate will be approximately 37% for men and 0% for women.

Estimates of tobacco use rates (smoking and smokeless combined) were not calculable due to insufficient information on smokeless tobacco use in Democratic People's Republic of Korea.

WHO Member States adopted a voluntary global target to reduce use of tobacco (smoking and smokeless combined) by 30% by 2025. Democratic People's Republic of Korea has sufficient information to project smoking rates only. The estimates indicate that, based on current trends, Democratic People's Republic of Korea is unlikely to achieve a 30% reduction in smoking rates by 2025.