

Coronavirus Disease 2019 (COVID-19)

Situation Report – **138**

Timor-Leste

*Data as reported on 8 February 2022

SITUATION IN NUMBERS

TIMOR-LESTE



Cumulative
20,748 (643)



Recovered (new)
19,790 (44)



Active cases
836



Deaths (new)
122 (0)

VACCINATION STATUS



1st dose - **673,195**
Coverage - **84.3%****



2nd dose - **565,926**
Coverage - **71.0%****

*As per data released by the [Ministry of Health](#)

**For adult population 18 years and above

GLOBAL



Cases
394,381,395



Deaths
5,735,179

VACCINATION



10,045,314,700 doses

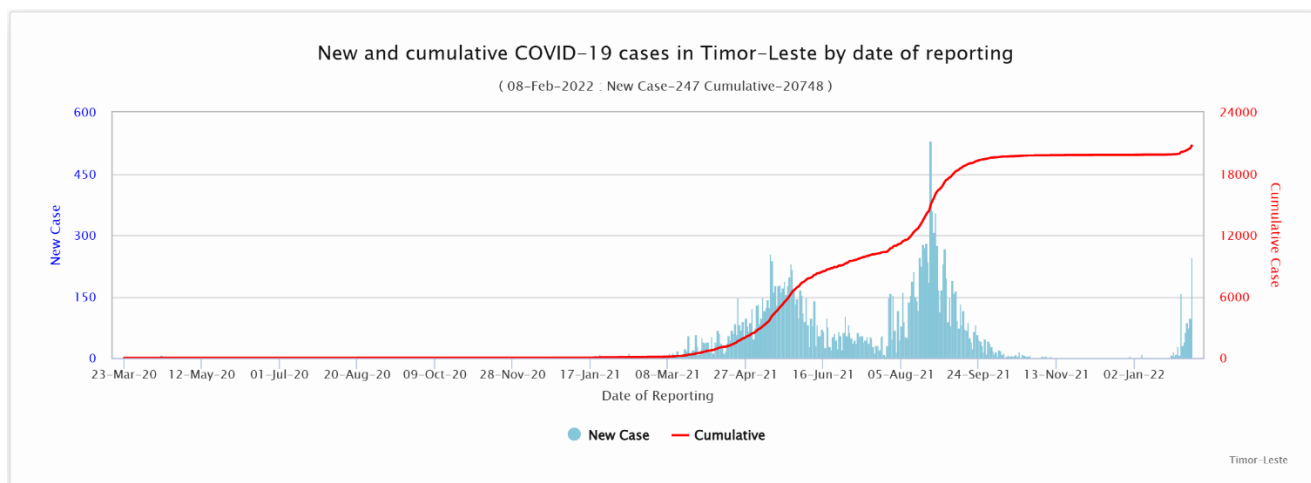
HIGHLIGHTS

- Since the last edition of the weekly situation report, the Ministry of Health (MoH) reported **643** new case of COVID-19, **44** recoveries and **0** deaths. The number of incident cases has increased dramatically since the last reporting period.
- WHO handed over 200 liters of Malathion, 650 kilograms of Abate, and 50.000 different Information, Education, and Communication (IEC) materials to the Ministry of Health (MoH) to combat dengue in Timor-Leste. WHO has been providing training on Clinical Management of dengue to a number of doctors and nurses of the National Hospital Guido Valadares (HNGV) and Community Health Centers.
- As a part of technical supports to the Ministry of Health through the procurement of essential medical supplies to respond to both Covid-19 and other health related needs, UNDP is continuously delivering medical supplies and essential medicines to SAMES. On 4 Feb 2022, a shipment with essential medicines arrived in Dili and delivered to SAMES. The shipment arrived in a 20 feet container, consisting of essential medicines.

EPIDEMIOLOGICAL UPDATES

1. New and cumulative cases, 23 Mar. 2020 – 8 Feb. 2022

As shown by the epi curve below, the number of incident cases has been increasing rapidly during the recent three reporting periods after very small number of cases for weeks. It is clear that we are now in the third transmission wave with evidence of community transmission. .



2. Distribution of cases and deaths by municipalities

Distribution of newly reported, recovered, and active cases by municipalities, as of 8 February 2022)

Municipality	New case (2-8 Feb. 2022)	Last 7-day % change (case)*	Cumulative case	New recovered (2 – 8 Feb. 2022)	Cumulative recovered	New death (2 - 8 Feb. 2022)	Cumulative death	Active Cases (8 Feb. 2022)
Aileu	0	0	126	0	125	0	1	0
Ainaro	0	0	227	0	224	0	3	0
Baucau	4	0	1546	0	1535	0	7	4
Bobonaro	10	900	625	1	606	0	9	10
Covalima	1	100	791	0	787	0	3	1
Dili	607	162	14609	36	13722	0	81	806
Ermera	1	100	1114	0	1111	0	2	1
Lautem	0	-100	185	0	179	0	5	1
Liquica	0	0	125	0	124	0	1	0
Manatuto	2	100	205	0	201	0	2	2
Manufahi	0	0	265	0	265	0	0	0
RAEOA	18	100	411	7	397	0	3	11
Viqueque	0	0	519	0	514	0	5	0

TOTAL	643	175	20748	44	19790	0	122	836
-------	-----	-----	-------	----	-------	---	-----	-----

*Change in new COVID-19 cases as compared with the previous 7 days

- A total of 643 incident cases are reported during the current reporting period (2-8 Feb. 2022), as compared 234 cases reported during the previous reporting period (26 Jan. – 1 Feb. 2022), a 175% increase. Majority cases are reported from Dili, while others are from Oecusse, Bobonaro, Baucau, Manatutu, Emara and Covalima municipalities.

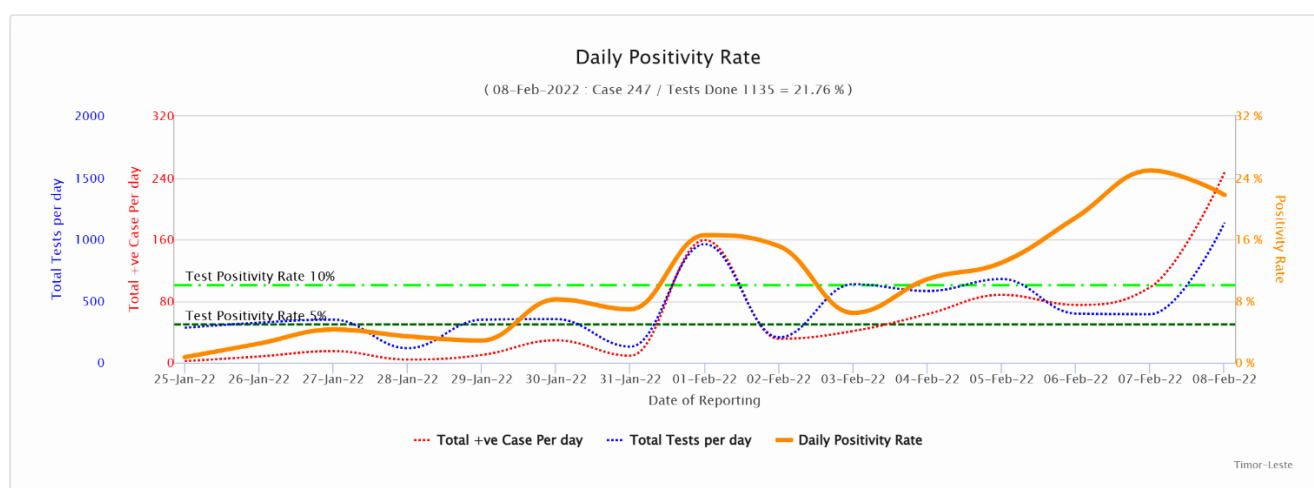
A review of reported cases illustrates that more cases without epidemiological links are reported now, as compared with more cases being detected from international travellers and close contacts during the previous two weeks, indicative of community transmission.

- No death has been reported from Timor-Leste during this reporting period, which is the fifteenth consecutive reporting period with no death reported.
- The number of active cases is 836 as of 8 Feb. 2022.

3. Number of test and test positivity rates

During the current reporting period from 2- 8 Feb. 2022, 4,026 tests were conducted, as compared to 2,582 tests in the previous 7 days.

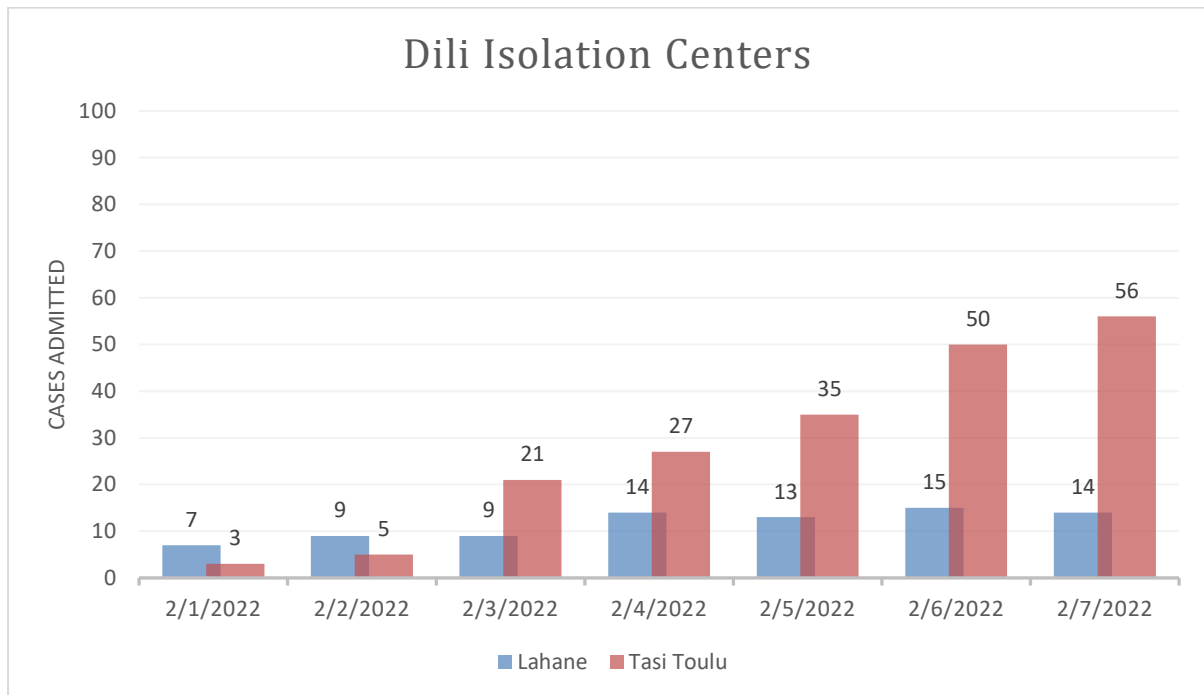
The test positive rate of this reporting period is averaged as 16.0%, as compared with 9.1% of the previous reporting period. The figure below illustrates the daily number of test, cases and test positivity proportion.



CASE MANAGEMENT

On 27 January 2022, Lahane reopened to admit 3 maternity patients with mild symptoms. Since Vera Cruz Isolation Center has been repurposed for Dengue treatment, Lahane is

treating mild/moderate patients with risk factors and critical cases. On 2 February, additional cases were admitted to Lahane for close monitoring.



The current bed occupancy % for Lahane Isolation center is 63%.

The current bed occupancy % for Tasi Toulou Isolation center is 24%

VACCINATION

At the time of writing this report (08/02/2022 morning), in total, 1,245,958 COVID-19 vaccine doses comprising 673,195 first doses (coverage 84.3% among population aged 18 years and above and 20.4% among the population aged 12 years to <18 years), 565,926 second doses (coverage 71.0% among population aged 18 years and above and 16.5% among the population aged 12 years to <18 years), 6,830 (coverage 0.9% among population aged 18 years) booster doses were administered in Timor-Leste. The breakdown of the number of doses administered and coverage by vaccine product and vaccine dose is illustrated in Table 1.

Table 1: Number of COVID-19 vaccine doses administered and coverage in Timor-Leste by vaccine product and dose as of 10:00hrs 08/02/2022

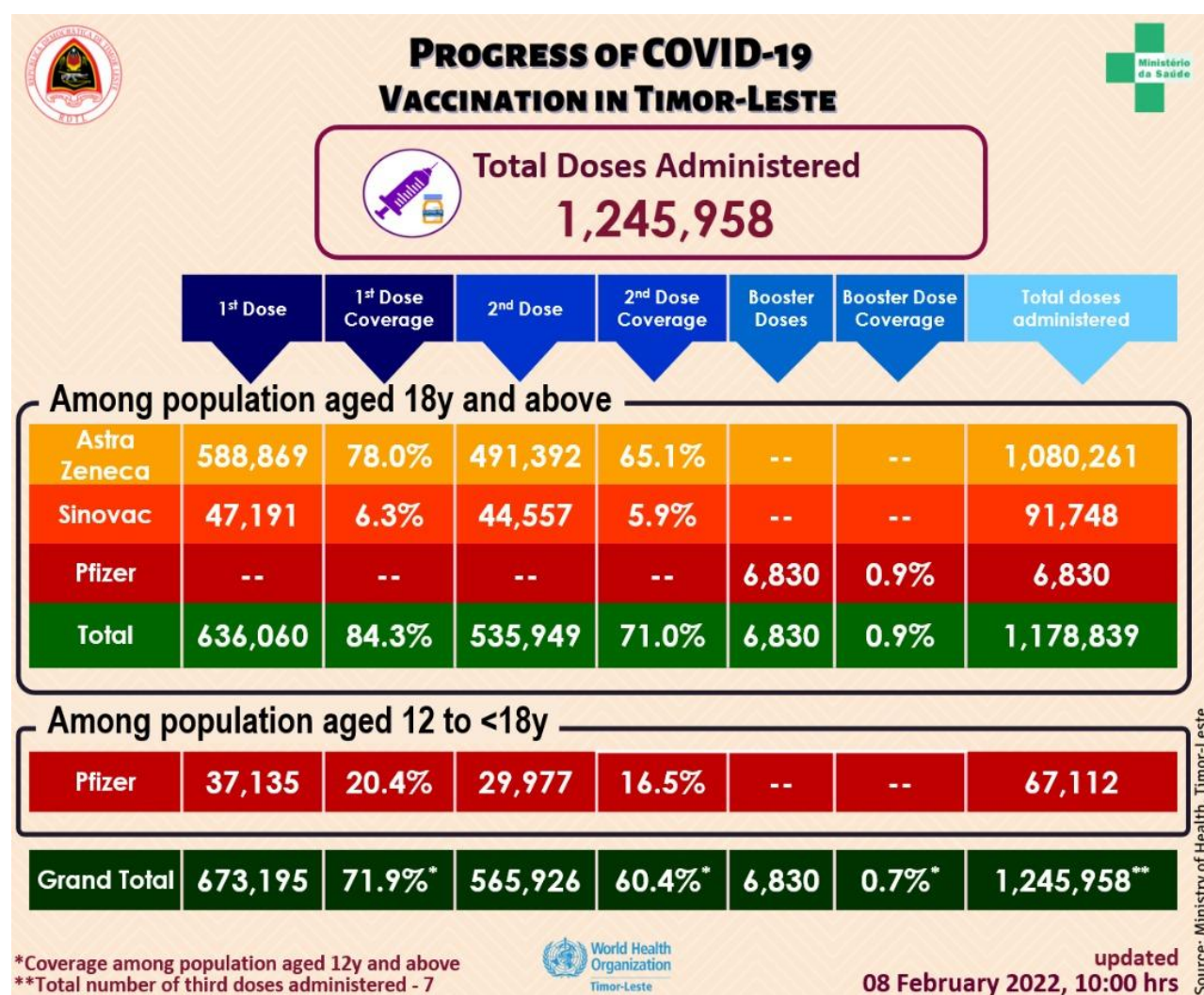


Figure 1: Coverage of COVID-19 vaccination among population aged 18 years and above by municipality in Timor-Leste as of 10:00hrs 08/02/2022

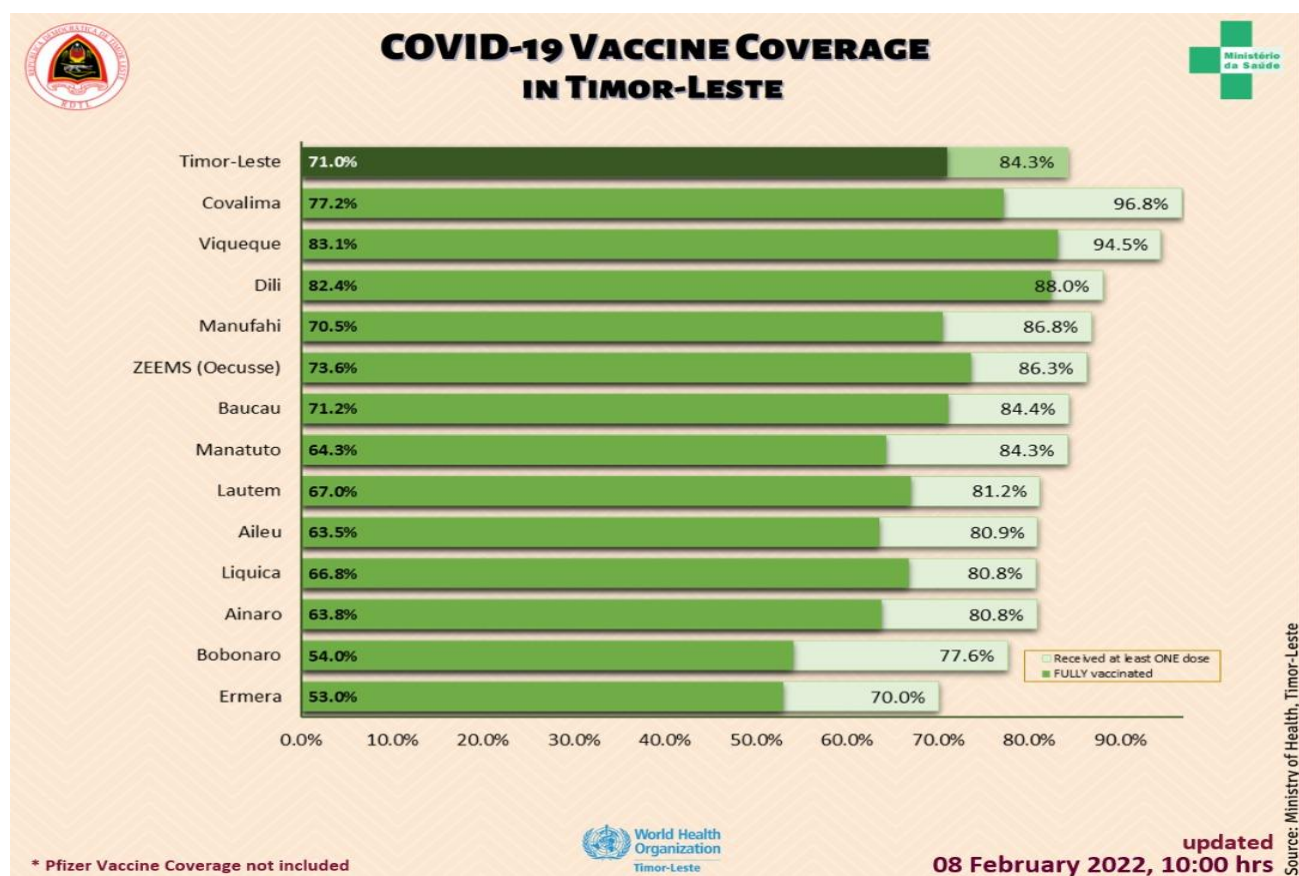


Table 2: Total number of individuals vaccinated with all the vaccine products (AstraZeneca, Sinovac, and Pfizer) and AEFI by sex by district in Timor-Leste as of 10:00 hrs 08/02/2022

Municipality	Number Vaccinated									AEFI		
	First Dose			Second Dose			Third & Booster			Male	Female	Total
	Male	Female	Total	Male	Female	Total	Male	Female	Total			
Dili	121,723	103,629	225,352	109,482	96,717	206,199	4,193	2,440	6,633	14	26	40
Aileu	12,923	12,360	25,283	9,971	9,875	19,846	-	-	-	1	1	2
Ainaro	14,406	13,998	28,404	11,154	11,278	22,432	-	-	-	0	0	0
Baucau	30,629	31,215	61,844	25,824	26,345	52,169	175	29	204	0	0	0
Bobonaro	22,084	21,968	44,052	15,469	15,198	30,667	-	-	-	4	6	10
Covalima	19,367	19,561	38,928	15,569	15,491	31,060	-	-	-	7	6	13
Ermera	27,312	25,312	52,624	20,472	19,328	39,800	-	-	-	0	0	0
Lautem	14,157	15,411	29,568	11,322	13,066	24,388	-	-	-	2	0	2
Liquica	18,038	18,465	36,503	14,884	15,307	30,191	-	-	-	0	1	1
Manatuto	12,299	11,653	23,952	9,266	9,000	18,266	-	-	-	2	0	2
Manufahi	14,848	14,112	28,960	11,959	11,566	23,525	-	-	-	1	2	3
Viqueque	20,197	21,319	41,516	17,543	18,986	36,529	-	-	-	6	0	6
ZEEMS (Oecusse)	17,571	18,638	36,209	15,021	15,833	30,854	-	-	-	0	0	0
Total (without Dili)	223,831	224,012	447,843	178,454	181,273	359,727	175	29	204	23	16	39
Total (Timor-Leste)	345,554	327,641	673,195	287,936	277,990	565,926	4,368	2,469	6,837	37	42	79

Figure 2: Weekly progress of COVID-19 vaccination in Timor-Leste as of 10:00 hrs 06/02/2022

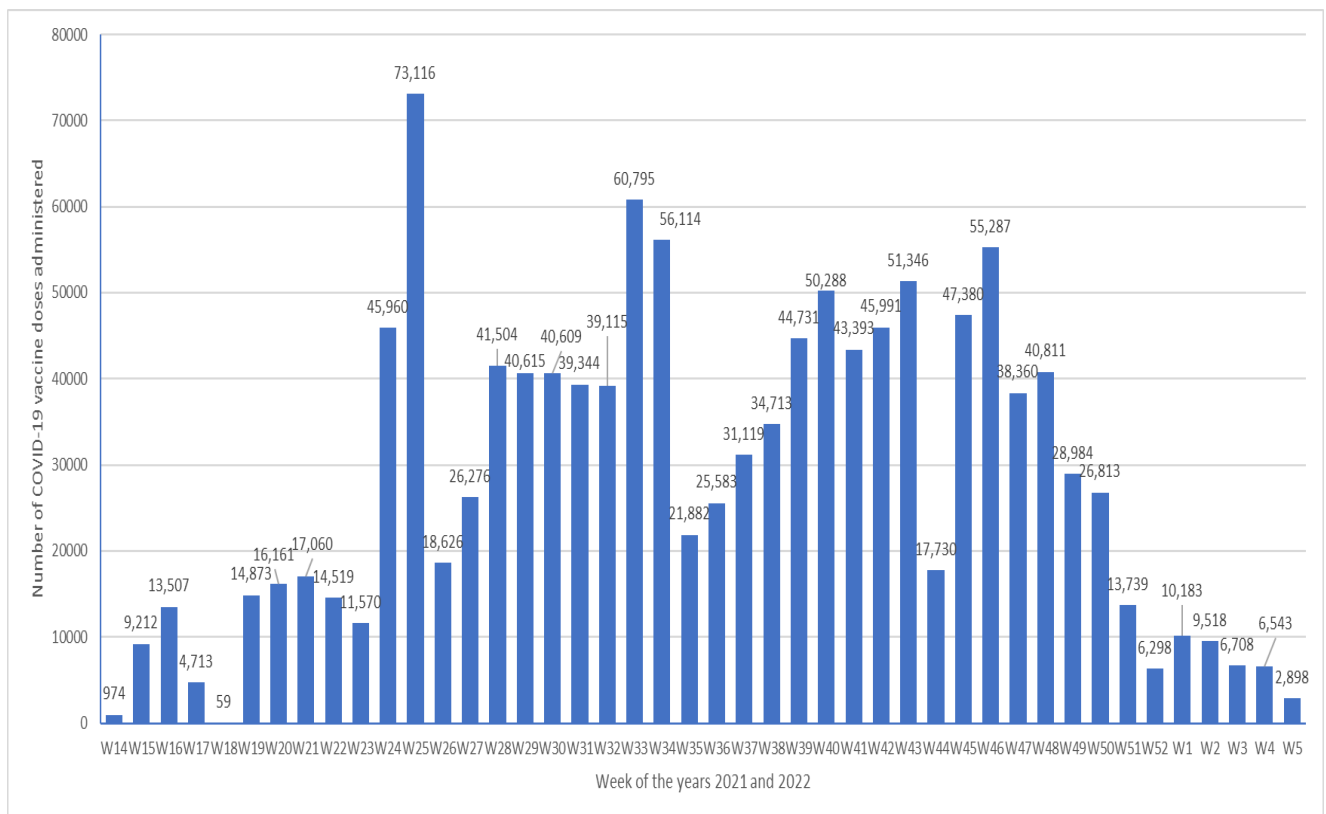


Table 3. Number of individuals among population aged 12 years to <18 years and above* vaccinated with Pfizer vaccine and coverage by district in Timor-Leste as of 10:00hrs 08/02/2022

Municipality	12to <18y Population	First Dose				Second Dose			
		12 to <18y Students	12 to <18y Non- students	Total	Coverage	12 to <18y Students	12 to <18y Non- students	Total	Coverage
Dili	41,822	37,092	43	37,135	88.8%	29,957	20	29,977	71.7%
Aileu	7,770	-	-	-	0.0%	-	-	-	0.0%
Ainaro	10,253	-	-	-	0.0%	-	-	-	0.0%
Baucau	18,189	-	-	-	0.0%	-	-	-	0.0%
Bobonaro	14,466	-	-	-	0.0%	-	-	-	0.0%
Covalima	9,729	-	-	-	0.0%	-	-	-	0.0%
Ermera	20,564	-	-	-	0.0%	-	-	-	0.0%
Lautem	10,447	-	-	-	0.0%	-	-	-	0.0%
Liquica	11,137	-	-	-	0.0%	-	-	-	0.0%
Manatuto	7,108	-	-	-	0.0%	-	-	-	0.0%
Manufahi	8,267	-	-	-	0.0%	-	-	-	0.0%
Viqueque	11,490	-	-	-	0.0%	-	-	-	0.0%
ZEEMS (Oecusse)	10,565	-	-	-	0.0%	-	-	-	0.0%
Total (without Dili)	139,985	-	-	-	0.0%	-	-	-	0.0%
Total (Timor-Leste)	181,807	37,092	43	37,135	20.4%	29,957	20	29,977	16.5%

*Based on 2021 population projections

Total Vaccinated (both doses) 67,112

Table 4. Number of individuals among population aged 18 years and above* vaccinated with AstraZeneca and Sinovac vaccines and coverage by district in Timor-Leste as of 10:00hrs 08/02/2022

Municipality	Eligible Population			Number vaccinated & Coverage																	
	High Risk Groups (20% Pop.)	18-59y no comorbidity (80% Pop.)	Total	First Dose						Second Dose						Booster Dose					
				High Risk Groups (20% Pop.)	Coverage	18-59y no comorbidity (80% Pop.)	Coverage	Total	Coverage	High Risk Groups (20% Pop.)	Coverage	18-59y no comorbidity (80% Pop.)	Coverage	Total	Coverage	High Risk Groups (20% Pop.)	Coverage	18-59y no comorbidity (80% Pop.)	Coverage	Total	Coverage
Dili	29,980	183,822	213,802	53,660	179.0%	134,557	73.2%	188,217	88.0%	34,454	114.9%	141,768	77.1%	176,222	82.4%	3176	1.5%	3450	1.6%	6625	3.1%
Aileu	6,292	24,943	31,235	12,977	206.2%	12,306	49.3%	25,283	80.9%	10,776	171.3%	9,070	36.4%	19846	63.5%	0	0.0%	0	0.0%	0	0.0%
Ainaro	7,410	27,726	35,136	6,728	90.8%	21,676	78.2%	28,404	80.8%	5,080	68.6%	17,352	62.6%	22432	63.8%	0	0.0%	0	0.0%	0	0.0%
Baucau	18,141	55,175	73,316	17,517	96.6%	44,327	80.3%	61,844	84.4%	13,337	73.5%	38,832	70.4%	52269	71.2%	200	0.3%	4	0.0%	204	0.3%
Bobonaro	13,268	43,476	56,744	11,080	83.5%	32,972	75.8%	44,052	77.6%	7,398	55.8%	23,269	53.5%	30667	54.0%	0	0.0%	0	0.0%	0	0.0%
Covallima	8,725	31,503	40,228	10,211	117.0%	28,717	91.2%	38,928	96.8%	7,308	83.8%	23,752	75.4%	31060	77.2%	0	0.0%	0	0.0%	0	0.0%
Ermera	14,350	60,793	75,143	10,993	76.6%	41,631	68.5%	52,624	70.0%	6,659	46.4%	33,143	54.5%	39800	53.0%	0	0.0%	0	0.0%	0	0.0%
Laulem	8,455	27,963	36,418	8,492	100.4%	21,076	75.4%	29,568	81.2%	6,905	81.7%	17,483	62.5%	24388	67.0%	0	0.0%	0	0.0%	0	0.0%
Liquica	9,588	35,597	45,185	9,187	95.8%	27,316	76.7%	36,503	80.8%	7,072	73.8%	23,119	64.9%	30121	66.8%	0	0.0%	0	0.0%	0	0.0%
Manatuto	6,701	21,718	28,419	6,868	102.5%	17,084	78.7%	23,952	84.3%	4,767	71.1%	13,499	62.2%	18266	64.3%	0	0.0%	0	0.0%	0	0.0%
Manufahi	7,595	25,766	33,361	9,703	127.8%	19,257	74.7%	28,960	86.8%	9,452	124.5%	14,073	54.6%	23525	70.5%	0	0.0%	0	0.0%	0	0.0%
Viqueque	11,034	32,905	43,939	12,542	113.7%	28,974	88.1%	41,516	94.5%	10,548	95.6%	25,981	79.0%	36529	83.1%	0	0.0%	0	0.0%	0	0.0%
ZEMMS (Dicasse)	9,408	32,534	41,942	11,630	123.6%	24,579	75.5%	36,209	86.3%	8,116	86.3%	22,738	69.9%	30,854	73.6%	0	0.0%	0	0.0%	0	0.0%
Total (without Dili)	120,967	420,098	541,065	127,928	105.8%	319,915	76.7%	447,843	82.8%	97,418	80.5%	262,309	62.4%	359,727	66.5%	200	0.0%	4	0.0%	204	0.0%
Total (Timor-Leste)	150,947	603,920	754,867	181,588	120.3%	454,472	75.25%	636,060	84.3%	131,872	87.4%	404,077	66.9%	535,949	71.0%	3376	0.4%	3454	0.5%	6830	0.9%

*Based on 2021 population projections. Population with Comorbidity 12.5% among 18-59y based on 2016 DHS data

High Risk Groups (20% of the population) - Healthcare staff, other front line staff, aged 65y and above, and 18-59y with comorbidity

18-59y with no comorbidity (80% of the population)

Total Vaccinated (all doses) 1,178,839 (Total No. of third Doses - 7)

SITUATION ANALYSIS

- It is clear that we are now in the third transmission wave of COVID-19 in Timor-Leste. This wave is primarily driven by the Omicron variant. It is expected that large number of cases will be detected and reported, but more will be undetected and unreported since they might be asymptomatic or unwilling to be tested at health care facilities.
- According to reports from other countries, it is predicted that most of the cases will be mild or asymptomatic. However, due to the large number of infections in a short period of time during the next several weeks, we need to be well prepared given the limited capacity of the health care system to manage a large surge of severe and critical cases.
- Meanwhile, we should continue to accelerate our efforts on surveillance and testing, contact tracing, quarantine and isolation of cases, as well as vaccination in lower coverage areas.

CURRENT CONCERN

Updates of Omicron situation in South East Asian Region, as of 2 Feb. 2022

- The omicron variant continues to drive a high incidence of new COVID-19 cases globally, with near replacement of the Delta variant by the Omicron variant. As of 2 February 2022, ten countries in WHO's SEA Region have detected COVID-19 cases due to the Omicron variant, and nine countries have notified the first detection of them to WHO via National IHR Focal Points (IHR NFP).
- Currently there are 4 Omicron sub-lineages namely BA.1, BA.1.1, BA.2 and BA.3, with their parent lineage being B.1.529. BA.2 shares many mutations with BA.1, but the key differences include in the Spike protein, BA.2 does not carry the Spike 69-70 deletion associated with S-gene target failure. BA.2 apparently has a growth advantage over BA.1 and is replacing BA.1 in many countries. In South-East Asia Region, at least Bangladesh, India, Indonesia, Nepal, Sri Lanka and Thailand have detected BA.2 variant (according to the data uploaded to the GISAID), with BA.2 becoming predominant sub-lineage in India and Nepal.
- In comparison to the Delta variant, the severity and mortality associated with omicron is significantly lower, including in children. As a result, decoupling of cases and severe diseases/deaths (a limited increase in hospitalization and deaths relative to a large increase in the number of cases) have been observed, including in the countries in the WHO South-East Asia Region (see the figure in the SEARO Situation Report #3, 28 January 2022).

Currently there are no indications of a difference in disease severity among COVID 19 cases due to BA.1 and BA.2 sub lineages of the Omicron variant.

Source: WHO SEARO COVID-19 Situation Report, #4, 2022.

AVAILABLE RESOURCES

- [For public and professionals on prevention, treatment, and vaccination etc.](#)
- [WHO Recommendations for COVID-19 Related Decisions](#)
- WHO Free Courses in Tetum – [OpenWHO.org](#)

COVID-19 INFORMATION AND MEDIA QUERIES

- The MoH has established a hotline number – 119 – for COVID-19 on which people can call to get any COVID-19 related information.
- Additionally, [MoH Facebook page](#) provides timely updates on COVID-19 developments in the country.
- WHO Timor-Leste through its [Facebook page](#) and [Twitter handle](#) also disseminates information on preventive measures, questions and answers, myth-busters and latest updates on COVID-19 globally and nationally.
- For media queries and interviews requests can be sent to hasane@who.int