

# Coronavirus Disease 2019 (COVID-19)

Situation Report – 122

## Timor-Leste



World Health  
Organization

Timor-Leste

\*Data as reported on 19 October 2021

### SITUATION IN NUMBERS

#### TIMOR-LESTE



Cumulative  
**19,730 (49)**



Recovered (new)  
**19,537 (137)**



Active cases  
**73**



Deaths (new)  
**120 (1)**

#### VACCINATION STATUS



1<sup>st</sup> dose  
Coverage – **68.3%**



2<sup>nd</sup> dose  
Coverage – **43.9%**

\*As per data released by the [Ministry of Health](#)

#### GLOBAL



Cases  
**240,940,937**



Deaths  
**4,903,911**

#### VACCINATION



**6,545,309,084** doses

### HIGHLIGHTS

- Since the last edition of the weekly situation report, the Ministry of Health (MoH) reported **49** new cases of COVID-19, **137** recoveries and **1** death. The number of new cases and deaths have been on a declining trend since late August.
- On Saturday, 15 October, Timor-Leste Government received 100,620 doses of Pfizer vaccine for 12 to below 18 age group, a generous contribution from the US Government through COVAX Facility.
- The U.S. Chargé d’Affaires, UNICEF Representative and WHO Representative officially handed over 100,620 doses of Pfizer vaccine for 12 to below 18 age group to the MoH. This vaccine doses were made available by the US Government through the COVAX Facility.
- WHO and the MoH, with the financial support from EU conducted a “lesson learnt” session with heads of all Pillar Leads of COVID-19 response. The participants also discussed what has worked well so far and challenges faced, and what could be improved to strengthen Timor-Leste’s COVID-19 response.

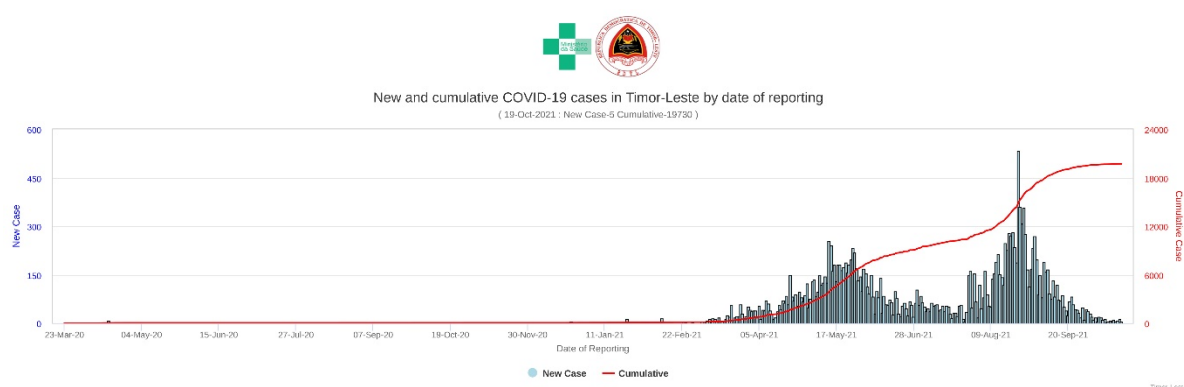
- The MoH with technical support from WHO and financial support from KOICA conducted a four-day refresher training on Lymphatic Filariasis Morbidity Management and Disability Prevention (MMDP) for the head of CHCs and NTDs focal point from 71 CHCs in the country.
- With the support from WHO and UNICEF, the MoH along with Ministry of Education is conducting COVID-19 vaccine Pfizer advocacy for 12 to below 18 age group parents and teachers for the upcoming COVID-19 vaccine Pfizer roll out in two municipalities – Dili and Liquica.
- The National Directorate for Pharmacy and Medicines conducted a two-day consultative workshop with private pharmacies, clinics, and drug importers on the draft guidelines for pharmacovigilance in Timor-Leste. This draft guideline was developed with technical assistance from WHO. This consultation will ensure that the MoH carries out a more comprehensive consultation with relevant stakeholders before the guideline is presented to the Council of Directors for final approval.
- To commemorate the World Mental Health Day, the MoH, with WHO's support, conducted a workshop on 18-19 October on Mental Health, Suicide Prevention and Psychosocial Support during Pandemic COVID-19. Health professionals, representative from 13 municipalities, organizations working in the field of mental health like PRADET, PHD and Ministry of Social Solidarity and Inclusion took part in the workshop.
- The MoH with the support from WHO FCTC Secretariat, WHO Regional Office and WHO Timor-Leste launched the first National Tobacco Cessation and Quitline Services in the country. The newly established facility will provide free services for those who want to quit smoking.
- The National Commission of Medicines, Medical Products and Equipment and National Directorate for Pharmacy and Medicines of Ministry of Health (MoH) conducted a three-day national workshop to finalize the draft of the "Standard Treatment Guidelines for Primary Health Care" (STG for PHC) from 20 October to 22 October 2021. The World Health Organization financially supported this activity.
- SAMES, in coordination with UNICEF Supply Division and ULT manufacturer, conducted an orientation for SAMES technicians and staff, and biomedical equipment technicians on operating of the ULT Freezer, which are being deployed for Pfizer COVID-19 vaccine storage and transport.
- UNICEF works closely with cold chain subcommittees to monitor the performance of the ULT Freezers. The findings of the monitoring were shared with the MoH and UNICEF Supply Division and the ULT manufacturer to confirm that the country is ready for the rollout of the

Pfizer COVID-19 vaccine.

- UNICEF provided technical support to MoH to monitor the COVID-19 vaccine wastage in the country. The Director General of Health and COVAX General Coordinator of MoH issued a circular to orient all the municipality health service teams on daily vaccine stock monitoring and reporting.
- UNICEF and WHO continue to provide operational support to Dili, Manatuto and Ermera Municipality Health Services to scale up COVID-19 vaccination campaign for above 18 age group and for Pfizer vaccine advocacy to parents and teachers.
- UNDP brought in two large shipments with total 14.14 metric tons of medical equipment and medicines arrived at Dili port on 16 Oct 2021. The medical equipment consists of 70 sets of Autoclave Sterilization 24 Liter, sourced from Taiwan while medicines include 14 different categories of essential medicines such as; 25,000 bottles of co-trimoxazole 200 mg + 40 mg/5 ml oral suspension 100 ml bottle; 10,000 ampoules of Magnesium sulfate 500 mg/ml (50%) injection 10 ml ampoule; 5,000 vials of Meropenem 1 g powder for injection vial (Mepenex); 5,000 ampoules of Vitamin B-12 (cyanocobalamine) 1 mg/ml injection 1 ml ampoule; 5,000 bottles of Amoxicillin 125 mg + clavulanic acid 31.25 mg/5 ml powder for oral suspension 100 ml bottle; and 3,000 bottles of Ethanol (ethyl alcohol) 70% denatured, 1 liter bottle; Medicines have been sourced from France, Germany, Greece, India, Netherlands, and Spain.

## EPIDEMIOLOGICAL UPDATES

- **New and cumulative COVID-19 cases**

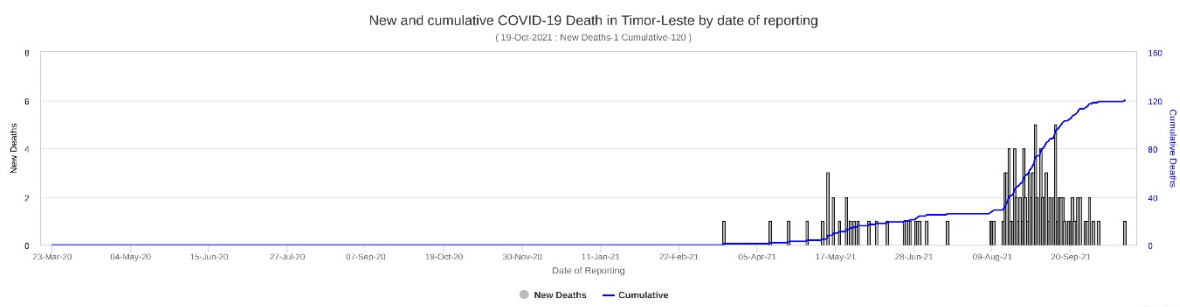


- Number of new cases continue to decline further in the current reporting period (13-19 October). There were 49 new cases during the last seven days. Compared to previous reporting period (6-12 October 2021), there was an 32% reduction.

- Cumulatively 19,730 COVID-19 confirmed cases have been reported since the start of the pandemic in March 2020. However, vast majority of the cases (99%) were reported after March 2021.

- **New and cumulative deaths**

- One death reported during the past seven days (13-19 October), which was from Covalima. Cumulatively 120 deaths have been reported in Timor-Leste since the first COVID-19 related death was reported on 18 March.



- **Distribution of cases and deaths by municipalities**

Distribution of newly reported, recovered, and active cases by municipalities, as of 19 October 2021)

Municipality	New case (13-19 Oct 2021)	Last 7- day % change (case)*	Cumulative case	New recovered (13-19 Oct 2021)	Cumulative recovered	New death (13-19 Oct 2021)	Cumulative death	Active Cases (19 Oct 2021)	New case (13-19 Oct 2021)
Aileu	0	0	126	0	125	0	1	0	0
Ainaro	0	0	227	0	224	0	3	0	0
Baucau	1	-86	1536	33	1526	0	7	3	1
Bobonaro	9	50	600	33	587	0	9	4	9
Covalima	5	0	783	3	769	0	3	11	5
Dili	26	-40	13662	54	13536	0	79	47	26
Ermera	0	0	1113	0	1111	0	2	0	0
Lautem	1	0	183	0	177	0	5	1	1
Liquica	0	0	125	0	124	0	1	0	0
Manatuto	0	0	203	1	201	0	2	0	0
Manufahi	0	-100	265	3	265	0	0	0	0
RAEOA	3	-40	392	3	384	0	3	5	3
Viqueque	4	33	515	7	508	0	5	2	4
<b>TOTAL</b>	<b>49</b>	<b>-32</b>	<b>19730</b>	<b>137</b>	<b>19537</b>	<b>0</b>	<b>120</b>	<b>73</b>	<b>49</b>

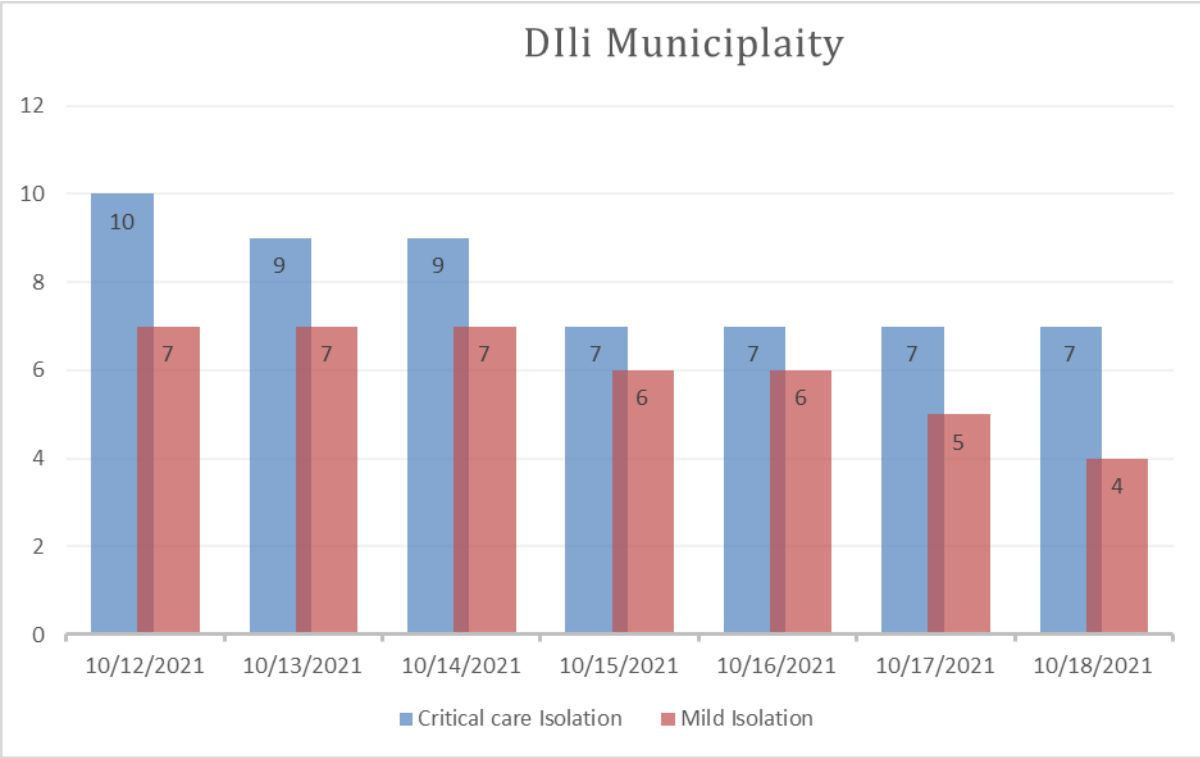
\*Change in new COVID-19 cases as compared with the previous 7 days

\*\*Change in new COVID-19 related deaths as compared with the previous 7 days

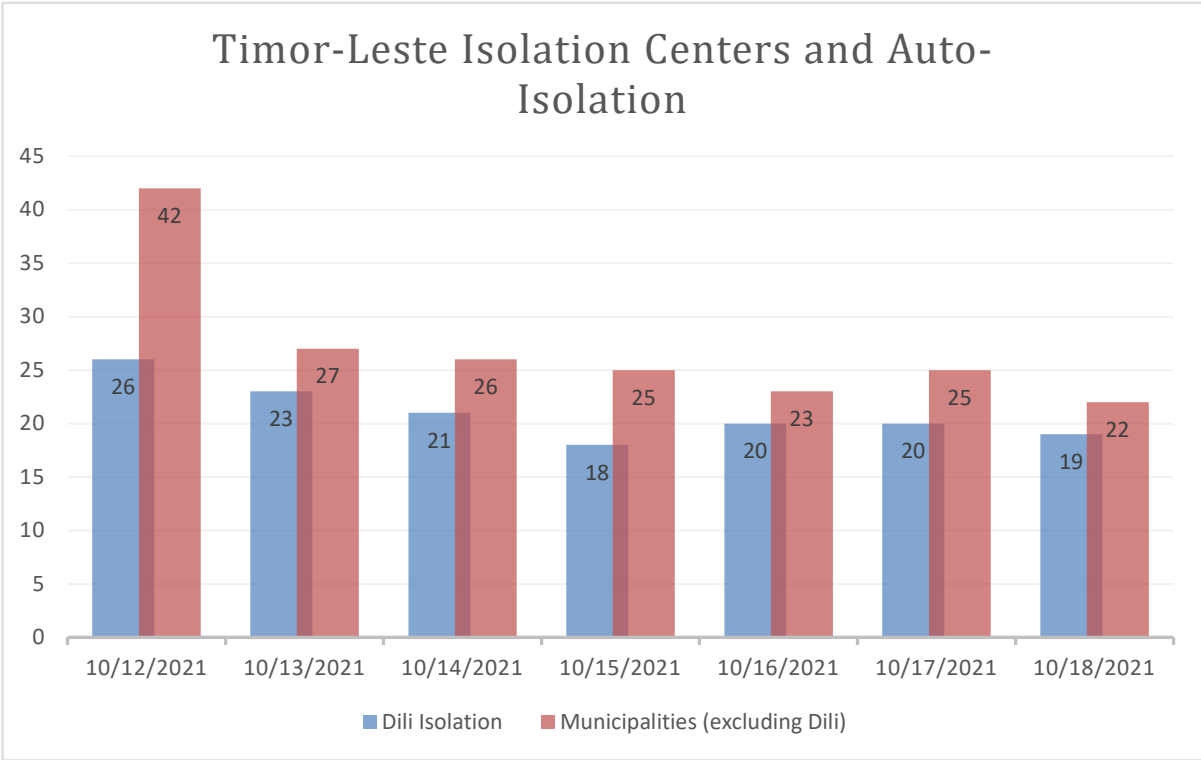
- The number of new cases reported in the current reporting period (13-19 October) decreased by 32% over the previous reporting period. Number of new cases have decreased or no case reported in most municipalities, but slightly increased in Bobonaro and Viqueque.
- Currently there are only 73 active cases across the country.
- **Number of test and test positivity rates**
  - During the current reporting period from 12-19 October, 1,885 tests were conducted, as compared to 1,463 tests in the previous 7 days.
  - The test positive rates of this reporting period averaged to 2.6%, which is below 5% and considered as limited community transmission. Compared to the averaged test positivity rate of 4.9% in the previous 7 days, there was a 47.2 % reduction.

CASE MANAGEMENT

- The isolation centre admissions in Dili continued to decrease steadily throughout October 2021. The numbers admitted to critical care isolation centres (Lahane and Vera Cruz) have also decreased and are between 4-10 patients. Since the start of the lockdown on 27 August 2021, there has been an overall decrease of 98% in admissions in Dili isolation centres. This week also marks the first time the mild cases have been less than the critical care cases.



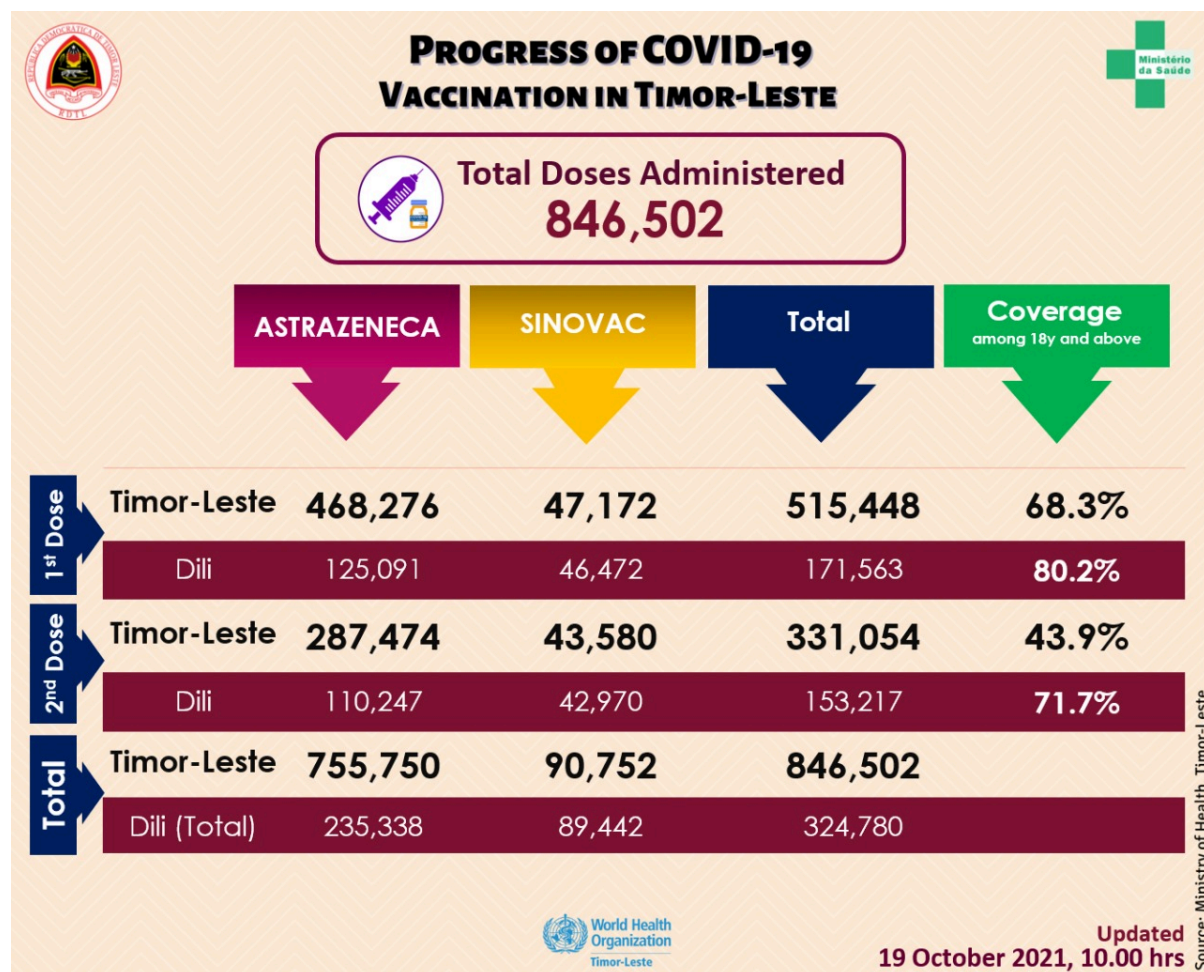
This chart below shows the total number of people admitted to isolation centres and auto-isolation (at home) in 12 municipalities compared to Dili. Throughout Timor-Leste, patients admitted to isolation centres have steadily decreased.



## VACCINATION

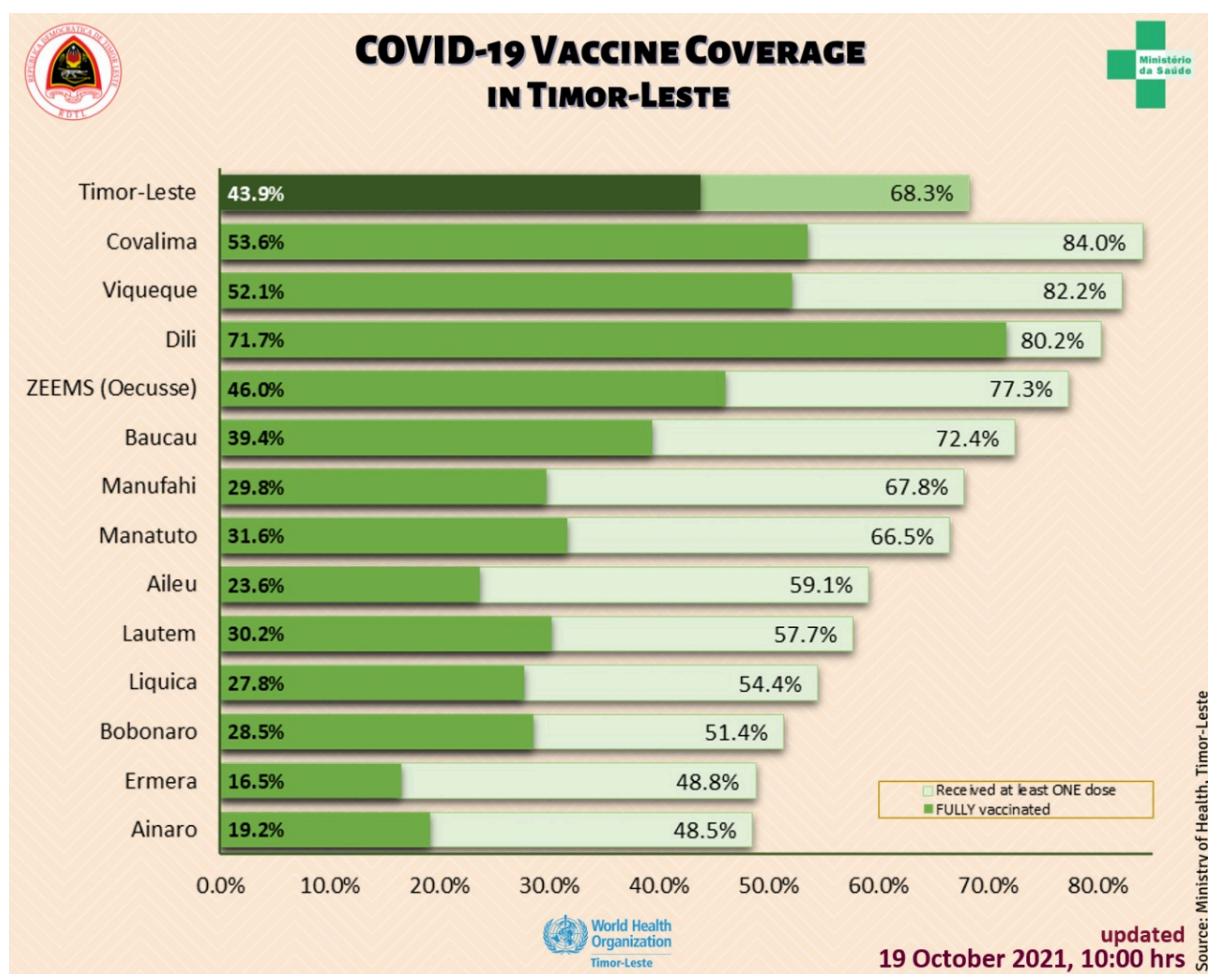
At the time of writing this report (19<sup>th</sup> October morning), in total, 846,502 COVID-19 vaccine doses comprising 515,448, first doses (coverage 68.3%) and 331,054 second doses (coverage 43.9%) were administered in Timor-Leste. The breakdown of the number of doses administered and coverage by vaccine type and vaccine dose is given in Table 1.

**Table 1: Number of COVID-19 vaccine doses administered and coverage in Dili and Timor-Leste by vaccine brand and doses as of 10:00hrs 19/10/2021**





**Figure 1: Coverage of COVID-19 vaccination by municipality in Timor-Leste as of 10:00hrs 19/10/20**

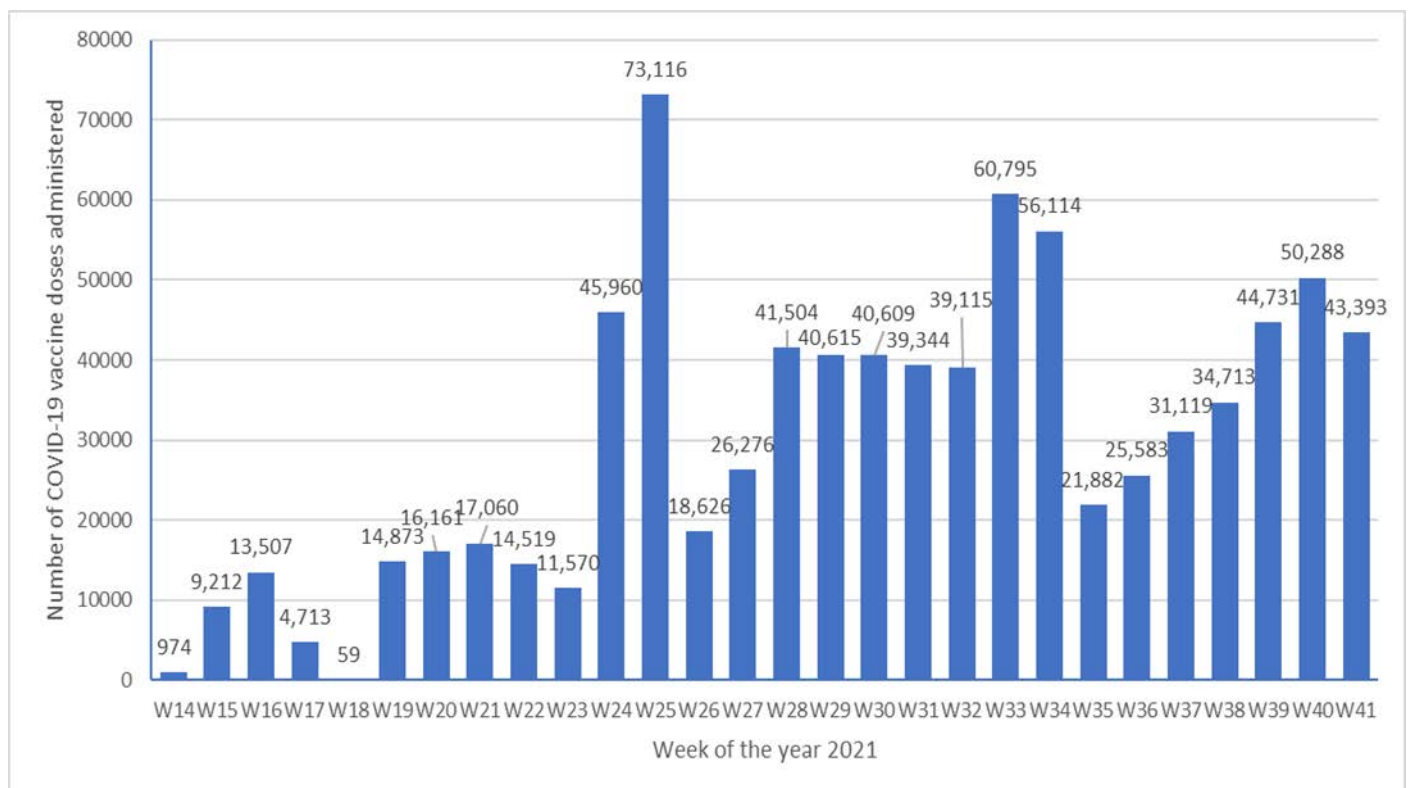




**Table 2: Number of individuals vaccinated and AEFI by sex as of 10:00 hrs 19/10/2021**

Number Vaccinated and AEFI by Sex as of 19/10/2021 10.00hrs.									
Municipality	Number Vaccinated						AEFI		
	First Dose			Second Dose			Male	Female	Total
	Male	Female	Total	Male	Female	Total			
Dili	96,257	75,306	171,563	85,658	67,559	153,217	13	21	34
Aileu	9,907	8,550	18,457	4,446	2,938	7,384	1	1	2
Ainaro	9,201	7,848	17,049	3,953	2,779	6,732	0	0	0
Baucau	27,133	25,984	53,117	16,113	12,777	28,890	0	0	0
Bobonaro	15,646	13,518	29,164	9,202	6,988	16,190	4	6	10
Covalima	17,355	16,450	33,805	11,682	9,860	21,542	7	6	13
Ermera	20,289	16,383	36,672	7,725	4,694	12,419	0	0	0
Lautem	10,691	10,309	21,000	5,823	5,191	11,014	2	0	2
Liquica	12,935	11,657	24,592	6,984	5,558	12,542	0	1	1
Manatuto	10,166	8,723	18,889	5,219	3,774	8,993	2	0	2
Manufahi	12,060	10,559	22,619	6,040	3,892	9,932	1	1	2
Viqueque	18,026	18,075	36,101	11,932	10,962	22,894	3	0	3
ZEEMS (Oecusse)	16,246	16,174	32,420	10,086	9,219	19,305	0	0	0
<b>Total (without Dili)</b>	<b>179,655</b>	<b>164,230</b>	<b>343,885</b>	<b>99,205</b>	<b>78,632</b>	<b>177,837</b>	<b>20</b>	<b>15</b>	<b>35</b>
<b>Total (Timor-Leste)</b>	<b>275,912</b>	<b>239,536</b>	<b>515,448</b>	<b>184,863</b>	<b>146,191</b>	<b>331,054</b>	<b>33</b>	<b>36</b>	<b>69</b>

**Figure 2: Weekly progress of vaccination in Timor-Leste during as of 10:00 hrs 17/10/2021**



**Table 3. Number of individuals among eligible population (18 years and above\*) vaccinated in Timor-Leste with COVID-19 vaccine and coverage as of 10:00hrs 19/10/2021**

Municipality	Eligible Population			Number vaccinated & Coverage											
	High Risk Groups (20% Pop.)	18-59y no comorbidity (80% Pop.)	Total	First Dose						Second Dose					
				High Risk Groups (20% Pop.)	Coverage	18-59y no comorbidity (80% Pop.)	Coverage	Total	Coverage	High Risk Groups (20% Pop.)	Coverage	18-59y no comorbidity (80% Pop.)	Coverage	Total	Coverage
Dili	29,980	183,822	213,802	52,294	174.4%	119,269	64.9%	171,563	80.2%	32,888	109.7%	120,329	65.5%	153,217	71.7%
Aileu	6,292	24,943	31,235	8,903	141.5%	9,554	38.3%	18,457	59.1%	3,667	58.3%	3,717	14.9%	7384	23.6%
Ainaro	7,410	27,726	35,136	4,349	58.7%	12,700	45.8%	17,049	48.5%	2,118	28.6%	4,614	16.6%	6732	19.2%
Baucau	18,141	55,175	73,316	15,230	84.0%	37,887	68.7%	53,117	72.4%	8,210	45.3%	20,680	37.5%	28890	39.4%
Bobonaro	13,268	43,476	56,744	8,692	65.5%	20,472	47.1%	29,164	51.4%	5,037	38.0%	11,153	25.7%	16190	28.5%
Covalima	8,725	31,503	40,228	9,024	103.4%	24,781	78.7%	33,805	84.0%	5,744	65.8%	15,798	50.1%	21542	53.6%
Ermera	14,350	60,793	75,143	8,527	59.4%	28,145	46.3%	36,672	48.8%	2,724	19.0%	9,695	15.9%	12419	16.5%
Lautem	8,455	27,963	36,418	6,354	75.2%	14,646	52.4%	21,000	57.7%	3,794	44.9%	7,220	25.8%	11014	30.2%
Liquica	9,588	35,597	45,185	6,109	63.7%	18,483	51.9%	24,592	54.4%	3,052	31.8%	9,490	26.7%	12542	27.8%
Manatuto	6,701	21,718	28,419	5,377	80.2%	13,512	62.2%	18,889	66.5%	2,634	39.3%	6,359	29.3%	8993	31.6%
Manufahi	7,595	25,766	33,361	8,066	106.2%	14,553	56.5%	22,619	67.8%	4,715	62.1%	5,217	20.2%	9932	29.8%
Viqueque	11,034	32,534	43,568	10,937	99.1%	25,164	77.3%	36,101	82.9%	7,254	65.7%	15,640	48.1%	22894	52.5%
ZEEMS (Oecusse)	9,408	32,905	42,313	11,055	117.5%	21,365	64.9%	32,420	76.6%	6,080	64.6%	13,225	40.2%	19,305	45.6%
<b>Total (without Dili)</b>	<b>120,967</b>	<b>420,098</b>	<b>541,065</b>	<b>102,623</b>	<b>84.8%</b>	<b>241,262</b>	<b>57.4%</b>	<b>343,885</b>	<b>63.6%</b>	<b>55,029</b>	<b>45.5%</b>	<b>122,808</b>	<b>29.2%</b>	<b>177,837</b>	<b>32.9%</b>
<b>Total (Timor-Leste)</b>	<b>150,947</b>	<b>603,920</b>	<b>754,867</b>	<b>154,917</b>	<b>102.6%</b>	<b>360,531</b>	<b>59.70%</b>	<b>515,448</b>	<b>68.3%</b>	<b>87,917</b>	<b>58.2%</b>	<b>243,137</b>	<b>40.3%</b>	<b>331,054</b>	<b>43.9%</b>

\*Based on 2021 population projections. Population with Comorbidity 12.5% among 30-59y based on 2016 DHS data  
High Risk Groups (20% of the population) - Healthcare staff, other front line staff, aged 60y and above, and 18-59y with comorbidity  
18-59y with no comorbidity (80% of the population)

**Table 4: COVID-19 Coverage Among TOTAL POPULATION by District as of 10:00 hrs 19/10/2021**

Municipality	Total Population	Number Vaccinated & Coverage			
		First Dose		Second Dose	
		Number Vaccinated	Coverage	Number Vaccinated	Coverage
Dili	352,553	171,563	48.7%	153,217	43.5%
Aileu	56,242	18,457	32.8%	7,384	13.1%
Ainaro	65,509	17,049	26.0%	6,732	10.3%
Baucau	126,996	53,117	41.8%	28,890	22.7%
Bobonaro	99,932	29,164	29.2%	16,190	16.2%
Covalima	70,194	33,805	48.2%	21,542	30.7%
Ermera	139,692	36,672	26.3%	12,419	8.9%
Lautem	66,938	21,000	31.4%	11,014	16.5%
Liquica	81,293	24,592	30.3%	12,542	15.4%
Manatuto	49,417	18,889	38.2%	8,993	18.2%
Manufahi	57,831	22,619	39.1%	9,932	17.2%
Viqueque	72,042	36,101	50.1%	22,894	31.8%
ZEEMS (Oecusse)	79,141	32,420	41.0%	19,305	24.4%
<b>Total (without Dili)</b>	<b>965,227</b>	<b>343,885</b>	<b>35.6%</b>	<b>177,837</b>	<b>18.4%</b>
<b>Total (Timor-Leste)</b>	<b>1,317,780</b>	<b>515,448</b>	<b>39.1%</b>	<b>331,054</b>	<b>25.1%</b>

**Table 5: Number of individuals TO BE VACCINATED by District as of 10:00 hrs 19/10/2021**

Municipality	Total Population	Number TO BE VACCINATED and Percentage			
		First Dose		Second Dose	
		Number Vaccinated	Coverage	Number Vaccinated	Coverage
Dili	352,553	180,990	51.3%	199,336	56.5%
Aileu	56,242	37,785	67.2%	48,858	86.9%
Ainaro	65,509	48,460	74.0%	58,777	89.7%
Baucau	126,996	73,879	58.2%	98,106	77.3%
Bobonaro	99,932	70,768	70.8%	83,742	83.8%
Covalima	70,194	36,389	51.8%	48,652	69.3%
Ermera	139,692	103,020	73.7%	127,273	91.1%
Lautem	66,938	45,938	68.6%	55,924	83.5%
Liquica	81,293	56,701	69.7%	68,751	84.6%
Manatuto	49,417	30,528	61.8%	40,424	81.8%
Manufahi	57,831	35,212	60.9%	47,899	82.8%
Viqueque	72,042	35,941	49.9%	49,148	68.2%
ZEEMS (Oecusse)	79,141	46,721	59.0%	59,836	75.6%
<b>Total (without Dili)</b>	<b>965,227</b>	<b>621,342</b>	<b>64.4%</b>	<b>787,390</b>	<b>81.6%</b>
<b>Total (Timor-Leste)</b>	<b>1,317,780</b>	<b>802,332</b>	<b>60.9%</b>	<b>986,726</b>	<b>74.9%</b>

## SITUATION ANALYSIS

- Number of new cases reported continues declining to a new low over the past seven days as compared with previous reporting periods. The averaged test positivity rates of the past seven days have also reduced further to below 5%, indicating a further reduced community transmission.
- However, a new COVID-19 related death was reported on 19 October, after 13 days of zero death in the country. According to the report, the deceased was vaccinated with the first dose of COVID-19 vaccine. The situation demands increasing the coverage of full vaccination, particularly in the remote villages and under-serviced mountainous areas.
- The number of tests remains low most of the days, sometimes as low as 100. Many patients don't go to the government health care facilities for services, due to the fear and stigma related to COVID-19. Instead, they go to private clinics, and get the rapid diagnostic tests for COVID-19. This necessitates measures to be taken for SARI/ILI/ARI patients seeking health care services and COVID-19 testing at government health care facilities.

## CHANGES IN NATIONAL COVID-19 POLICIES/GUIDELINES

- The Government has decided to lift the sanitary fence in the capital Dili, starting at 23:59 on 29 September 2021. The movement of the citizens between Dili and Municipalities as well as between the municipalities across the territory will no longer be prohibited. However, the Government called on communities to follow the COVID-19 guideline and safety regulations recommended by the MoH and WHO to keep fighting the spread of coronavirus. (source: [The government decided to lift the sanitary fence in Dili](#)).
- National Parliament authorizes President of the Republic to renew the State of Emergency for another 30 days between 00:00 hours 30 September 2021 and 23:59 hours 29 October, 2021 (Source: [National Parliament authorizes President of the Republic to renew the State of Emergency for another 30 days](#)).
- Health workers working at isolation centres will no longer be required to quarantine after completing their shift. A swab for the COVID-19 test will be collected on the last day, and if tested negative, the health workers will return to their families.

## CURRENT CONCERN

### COVID-19 among children

- Overall, there are proportionally fewer cases and deaths from COVID-19 among children, adolescents and young adults as compared to adults.
- Based on age-disaggregated case data reported to WHO from 30 December 2019 to 6 September 2021, the proportion of global cases increased with age category:
  - Children under the age of five represented the smallest proportion of cases among individuals up to 24 years old.
  - Older adolescents (15 to 19 years old) and young adults (20 to 24 years old) grouped together had the highest proportion of the global cases;
  - Deaths for all age groups represented less than 0.5% of the proportion of global deaths.
- Younger children (under five years old), older children and adolescents (10 to 19 years old) usually have fewer and milder symptoms of SARS-CoV-2 infection than adults >25 years old and are less likely than adults to experience severe COVID-19.
- While a less severe course of disease is a positive outcome, there are concerns that mild symptoms may have led to less testing, resulting in fewer identified cases of SARS-CoV-2 infection in children and adolescents.
- If children and adolescents with mild or no symptoms also transmit the disease, they may also contribute to transmission in the community.
- The use of public health and social measures, including physical distancing, cleaning hands, coughing into a bent elbow or a tissue, adequate ventilation in indoor settings, and masks, should be consistently and appropriately implemented for all ages in schools, especially since children under the age of 12 years are generally not yet eligible for vaccination.

For more on COVID-19 and children, see [WHO weekly epidemiological update of 14 Sept.](#)

## AVAILABLE RESOURCES

- [For public and professionals on prevention, treatment, and vaccination etc.](#)
- [WHO Recommendations for COVID-19 Related Decisions](#)
- WHO Free Courses in Tetum – [OpenWHO.org](#)

## COVID-19 INFORMATION AND MEDIA QUERIES

- The MoH has established a hotline number – 119 – for COVID-19 on which people can call to get any COVID-19 related information.

- Additionally, [MoH Facebook page](#) provides timely updates on COVID-19 developments in the country.
- WHO Timor-Leste through its [Facebook page](#) and [Twitter handle](#) also disseminates information on preventive measures, questions and answers, myth-busters and latest updates on COVID-19 globally and nationally.
- For media queries and interviews requests can be sent to [singhsho@who.int](mailto:singhsho@who.int) and [hasane@who.int](mailto:hasane@who.int)