



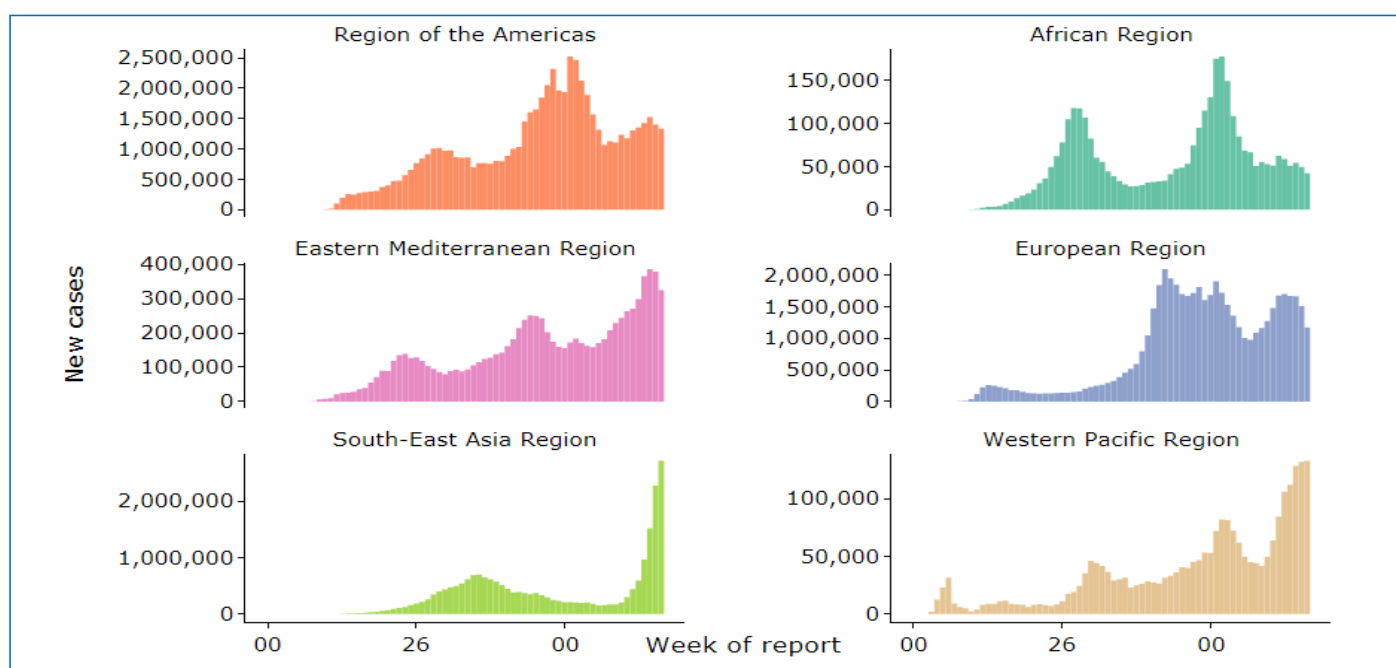
Tested	Confirmed Cases	Recovered	Death	Hotline
 5 498 979	 761 943	 687 328	 11 579	 27.6 million
Test/100 000/Week	Case/100 000/Week	Recovery Rate	CFR%	AR/100 000
90	10	90.2%	1.52	447
Testing Lab/Centres Number Tests (N=420)			PoE Screening	
RT PCR Lab : 124	5 410 515		 1 518 045	
GeneXpert Lab : 34	42 231		 81 222	
Rapid Antigen : 262	46 233		 7 029	
Last week daily Test average:	21 925		 505 805	
Vaccination		1 st dose by Gender		
Persons registered	7 248 828			
Vaccinated (1 st dose)	5 819 709			
Vaccinated (2 nd dose)	2 936 241			
National coverage (1 st dose)	11.7%			
Dhaka city coverage (1 st dose)	38.0%			

Date Source: Directorate General of Health Services, MoHFW, Bangladesh

1. Global Situation

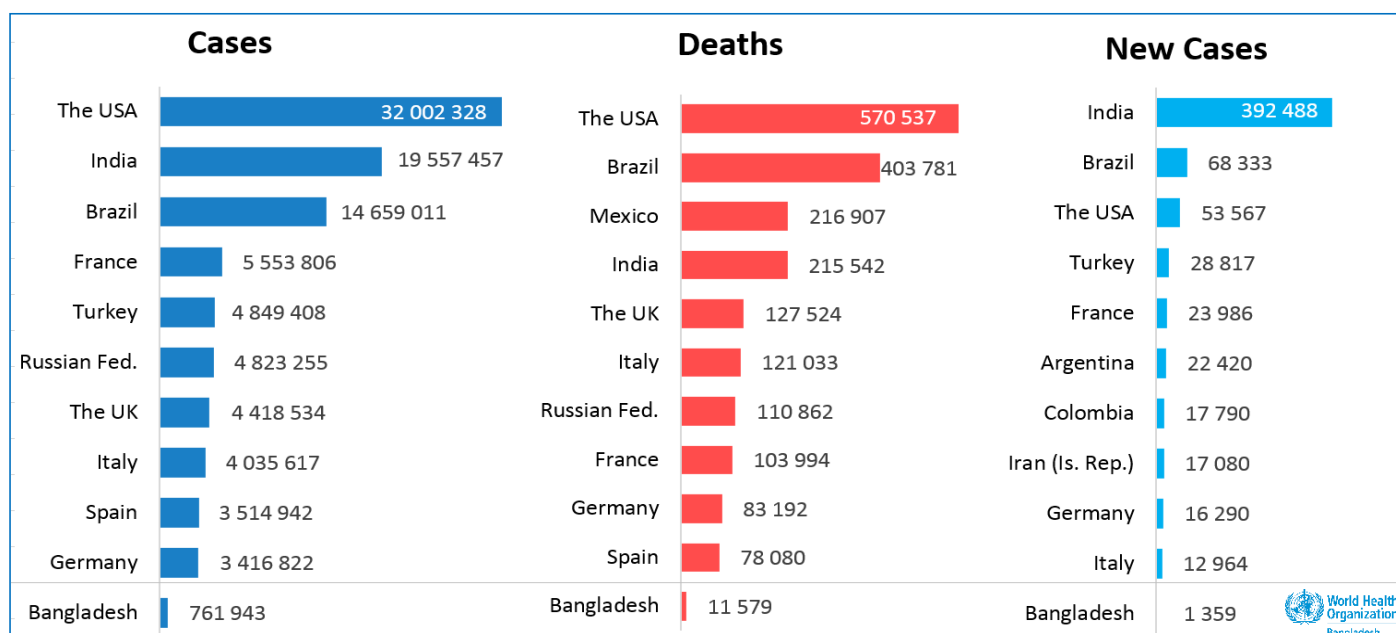
Globally, as of 04:00 am, on 02 May 2021, there have been **151 803 822** confirmed cases of COVID-19, including **3 186 538** deaths, received by the WHO from national authorities. The USA, the world's worst-hit country, has counted **32 002 328** (53 567) cases with **570 537** (815) deaths, followed by India with **19 557 457** (392 488) cases and the fourth-highest death of **215 542** (3 689). Brazil reported the third-highest cases of **14 659 011** (68 333) and the second-highest deaths of **403 781** (2 595); Mexico reported the third-highest death of **216 907** (460).

The figure below shows the weekly cases of COVID-19 by WHO region as of 02 MAY 2021



Over **5.6 million** new cases were reported last week, a **0.6%** decrease from the previous week. Weekly cases increased the highest in the South-East Asia Region (**19.4%**) followed by the Western Pacific Region (**0.04%**); weekly cases decreased in the European Region by **23.0%**, the African Region (**15.0%**), the Eastern Mediterranean Region by **14.3%**, and the Region of Americas (**5.0%**). Globally, 132 (**56%**) countries/territories are seeing declines while 73 (**31%**) are experiencing increasing numbers of new cases; the remaining 31 (**13%**) have no growth during the reporting week.

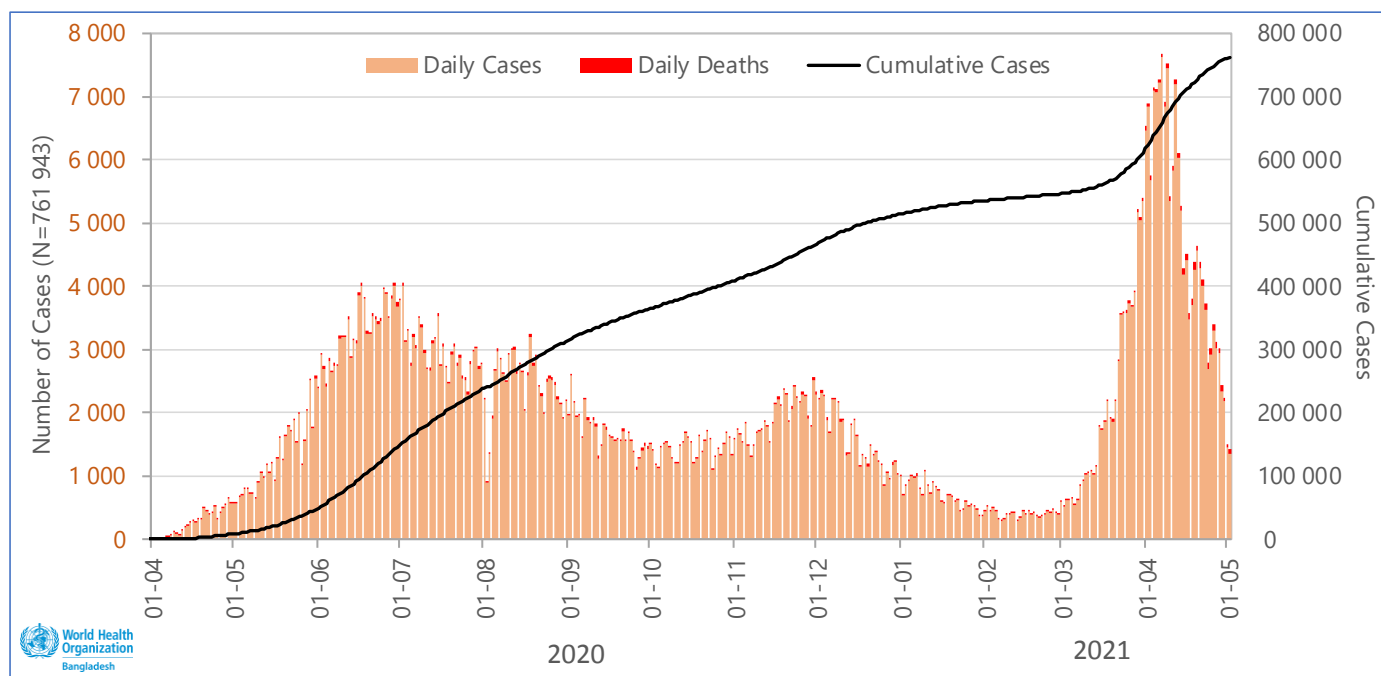
The figure below shows top-ranked countries for total Cases, Deaths, and New cases of COVID-19, 01 JAN 2020 – 02 MAY 2021



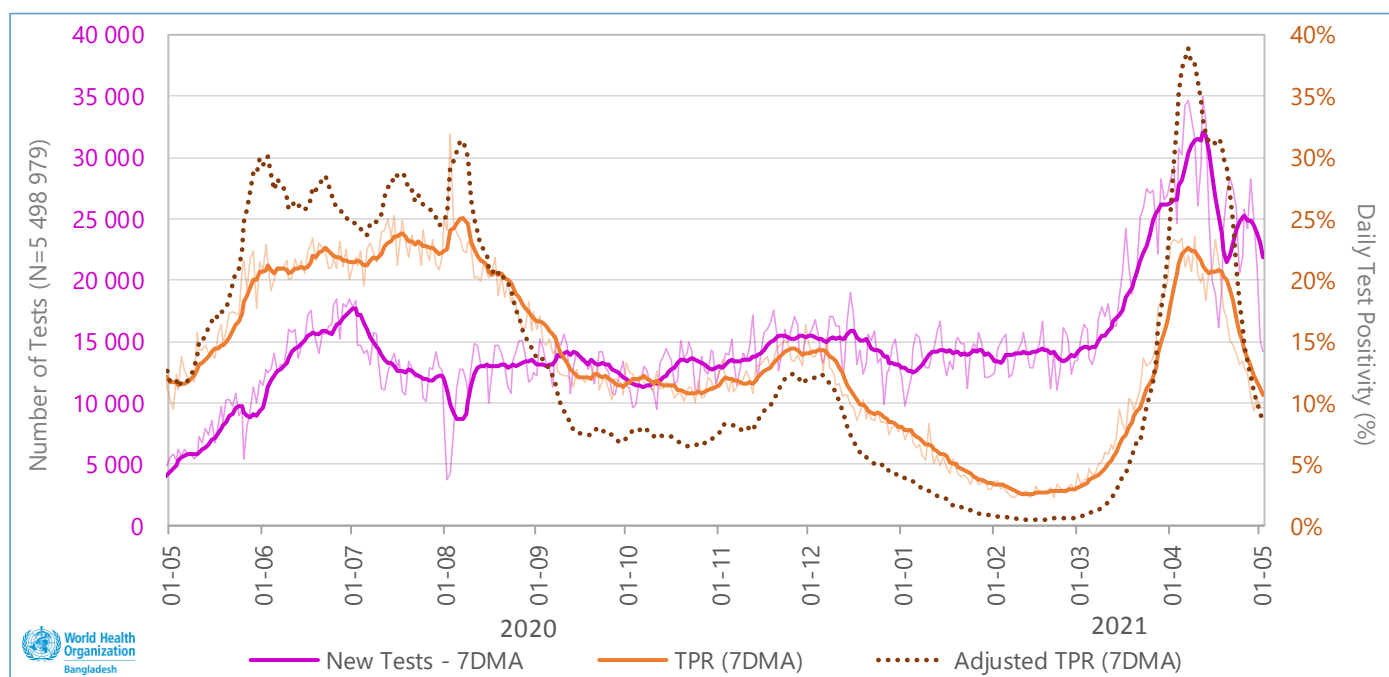
2. Bangladesh Situation

Between 8 March 2020 and 02 May 2021, according to the DGHS Press Release <<https://corona.gov.bd/press-release>> there were seven hundred sixty-one thousand, nine hundred forty-three (**761 943**) COVID-19 cases confirmed by RT-PCR, GeneXpert, and Rapid Antigen tests including eleven thousand, five hundred seventy-nine (**11 579**) related deaths (**CFR 1.52%**). Bangladesh is among the top **33** countries and accounts for **0.50%** of the COVID-19 cases of the world.

The figure below is showing the daily cases, deaths, and cumulative cases of COVID-19 PHSM as of 02 MAY 2021



The graph below is showing the number of samples tested and the Positivity ratio, as of 02 MAY 2021



In the past week (epidemiological week 17, 2021), Bangladesh reported **16 621** new cases, a **37.0% decrease** compared to last week; the case per 100 000 population per week is **9.8**. The country reported **526** new death, a **21.3% decrease**; death per 100 000 per week is **0.3**. The weekly new test is **153 478** (daily average: **21 925**), a **12.5% decrease** than the week before; tests per 100 000 per week is **90**; the weekly average test positivity rate (TPR) is **10.8%**, TPR **decreased by 28.0%** from last week. Overall Case Fatality Ratio (CFR) is **1.52%** which was 1.48% last week.

3. Surveillance & Laboratory

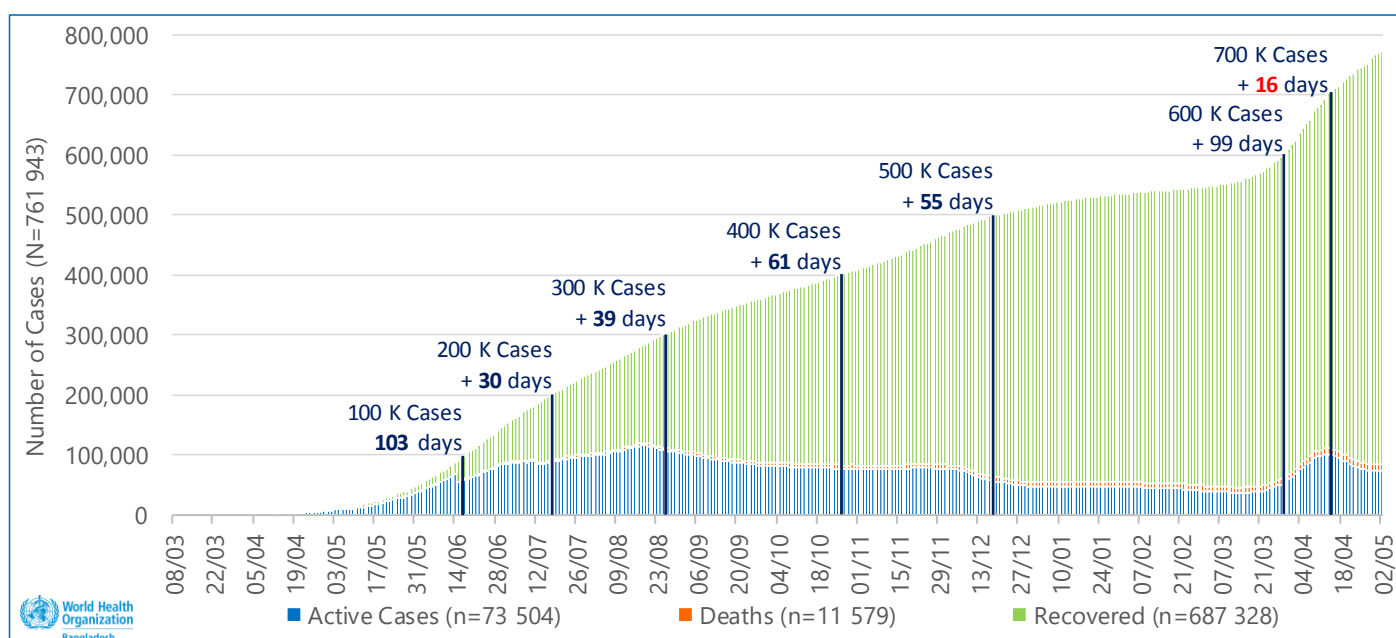
As of 02 May 2021, **71.0%** of reported cases were from Dhaka division (**61.2%** at Dhaka city), Chattogram – **12.5%**, Rajshahi – **4.2%**, Khulna – **4.1%**, Sylhet – **2.7%**, Rangpur – **2.4%**, Barishal – **1.9%** and the lowest **1.2%** from Mymensingh division. While **58.3%** of the reported death were from Dhaka division (**35.0%** at Dhaka city), Chattogram – **18.1%**, Khulna – **6.1%**, Rajshahi – **5.2%**, Rangpur – **3.7%**, Sylhet – **3.5%**, Barishal – **3.0%**, and the lowest **2.1%** from Mymensingh division.

The table below is showing the distribution of COVID-19 case and death as of 02 MAY 2021

Division	08 MAR 2020 – 02 MAY 2021			Week 17, 2021 (26 APR – 02 MAY 2021)		
	Cases	Death	CFR (%)	Cases	Weekly Change	Death
Dhaka	541 352	6 752	1.25%	10 799	-39.2%	301
Chattogram	95 204	2 099	2.20%	2 937	-24.8%	99
Rajshahi	31 786	605	1.90%	692	-42.3%	27
Khulna	31 126	708	2.27%	731	-37.1%	35
Sylhet	20 246	395	1.95%	488	-38.8%	22
Rangpur	18 035	426	2.36%	287	-33.4%	11
Barishal	14 632	351	2.40%	451	-44.9%	23
Mymensingh	9 562	243	2.54%	236	-23.4%	8
National	761 943	11 579	1.52%	16 621	-37.0%	526

In the epi-week 17, all the divisions experienced negative growth of new cases; the highest decrease observed in the Barishal division, **44.9%** (451 this week and 818 in the week before), followed by the Rajshahi division **42.3%** (692 and 1 199 respectively). The Dhaka division reported the highest number of new cases (10 799), **25** new cases per 100 000/week with a **decrease** of **39.2%** of weekly cases; and the Mymensingh division reported the lowest number (236) of new cases, **2** new cases per 100 000/week. Out of the 761 943 COVID-19 cases registered as of 02 May 2021, **90.2%** (687 328) recovered, **8.3%** (63 036) were active cases, and the remaining died (previously mentioned as CFR). In epidemiological week 17, the average number of COVID-19 active cases **decreased** by **17.6%** compared to the week before (**68 919** and 83 688 respectively); during the same time, recovery decreased by **29.7%** (**29 876** in the current week and 42 516 in the week before).

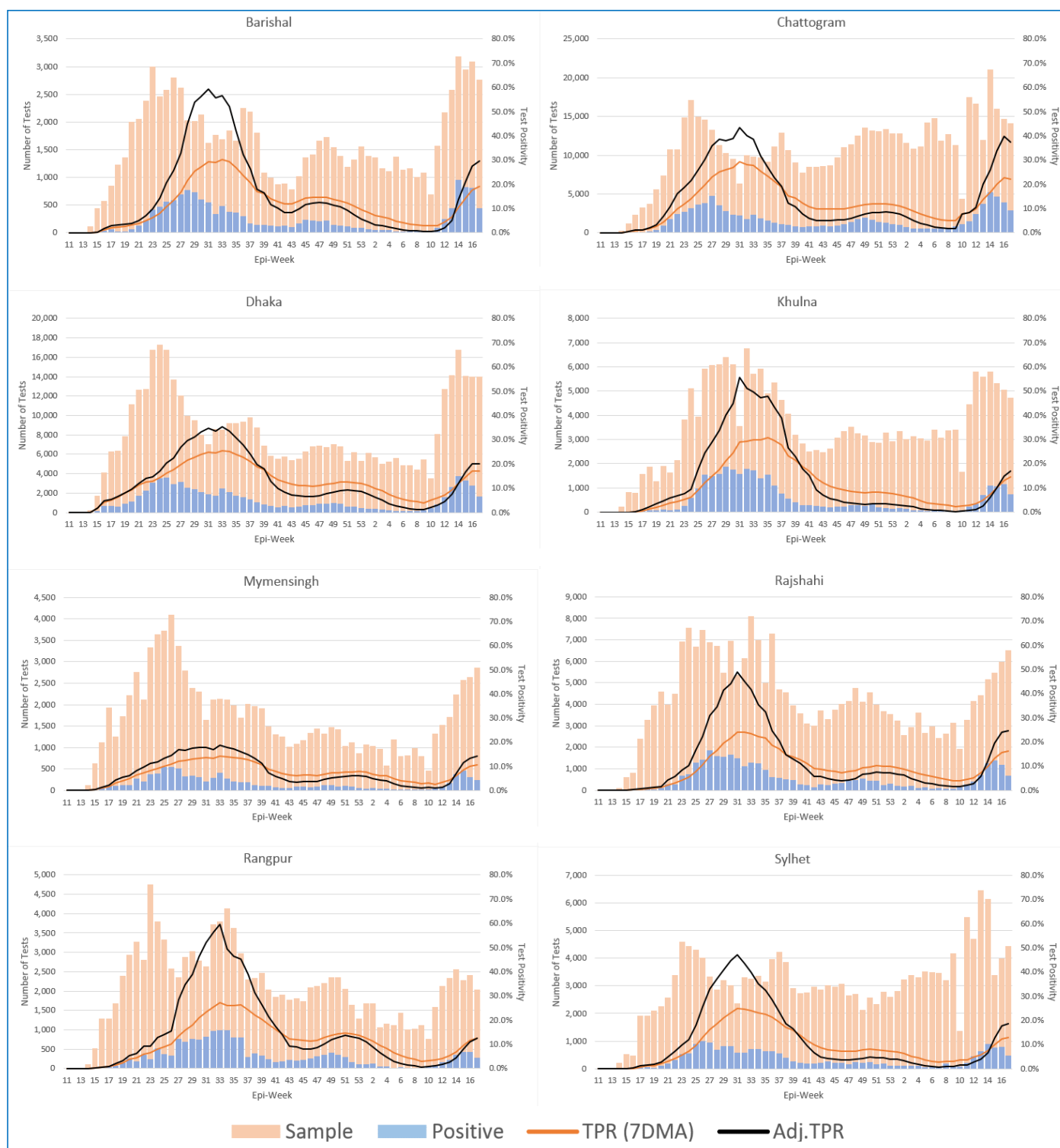
The figure below is showing the trend of the outcome of the COVID-19 cases as of 02 MAY 2021



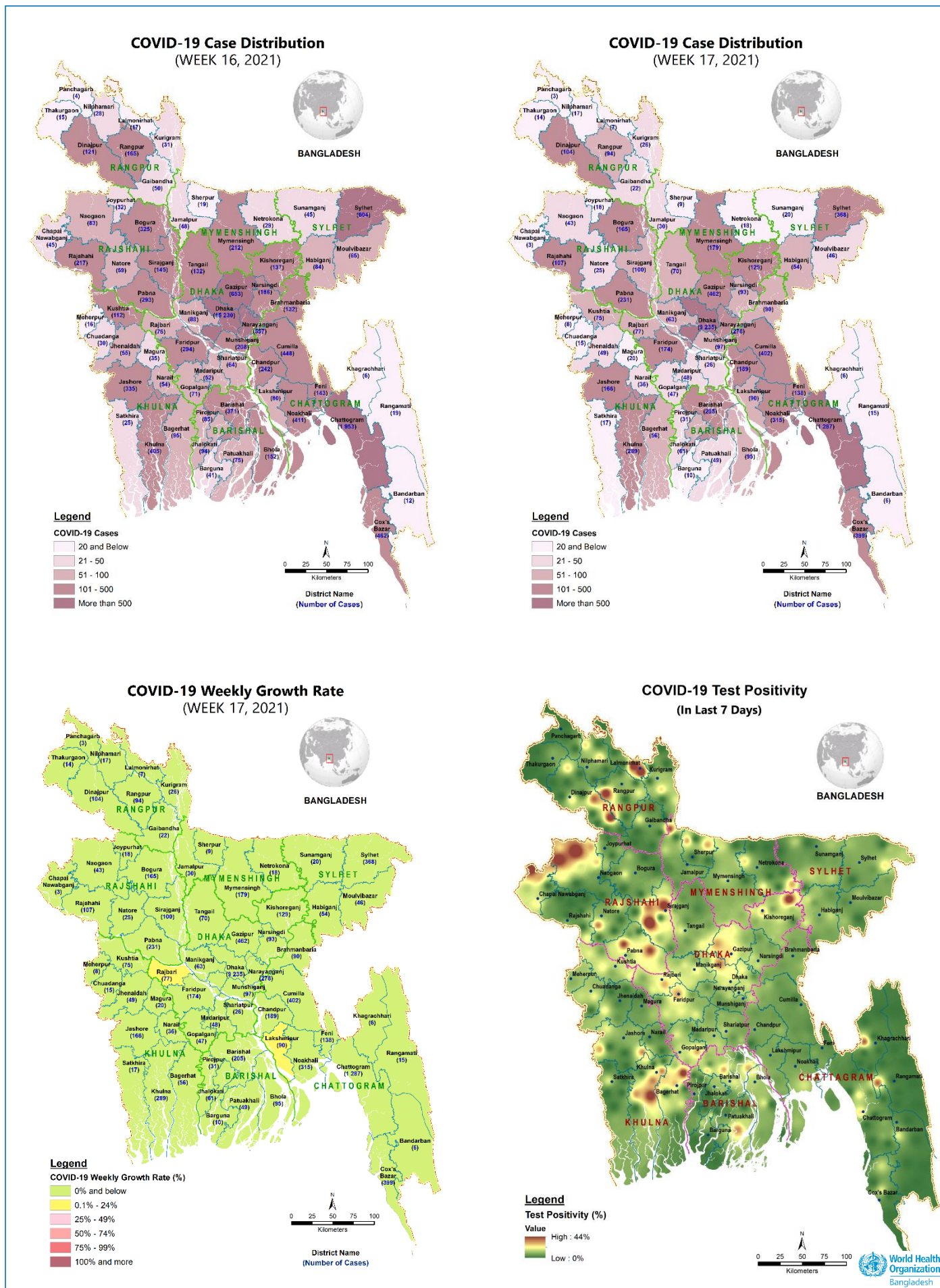
The highest number of weekly cases (**47 392**) reported in the epi-week **14**, 2021 (05-11 APR), and the highest daily cases **7 626** was recorded on 07 April 2021. The highest weekly death (**668**) was recorded in week **16**, 2021 (19-25 APR), with the highest daily death of **112** on 19 April 2021. In the reported week, COVID-19 daily average cases decreased to **2 374** from 3 767 in the week before.

As of 02 May 2021, according to the DGHS Press Release, **5 498 979** COVID-19 tests (RT-PCR **98.4%**, GeneXpert **0.8%**, and Rapid Antigen **0.8%**) were conducted in Bangladesh with an overall positivity rate of 13.86% (**9.60%** in the last 24 hours) by **420** laboratories/test centres. So far, **73.8%** of the samples (4 055 868) have been tested for COVID-19 in government facilities (RT-PCR **52/124**, GeneXpert **32/34**, and Rapid Antigen **262/262**). During the last week, one (1) RT-PCR lab (Ultra Care Health Center, Dhaka) and **68** Rapid Antigen test centres have been added to the network of COVID-19 testing facilities.

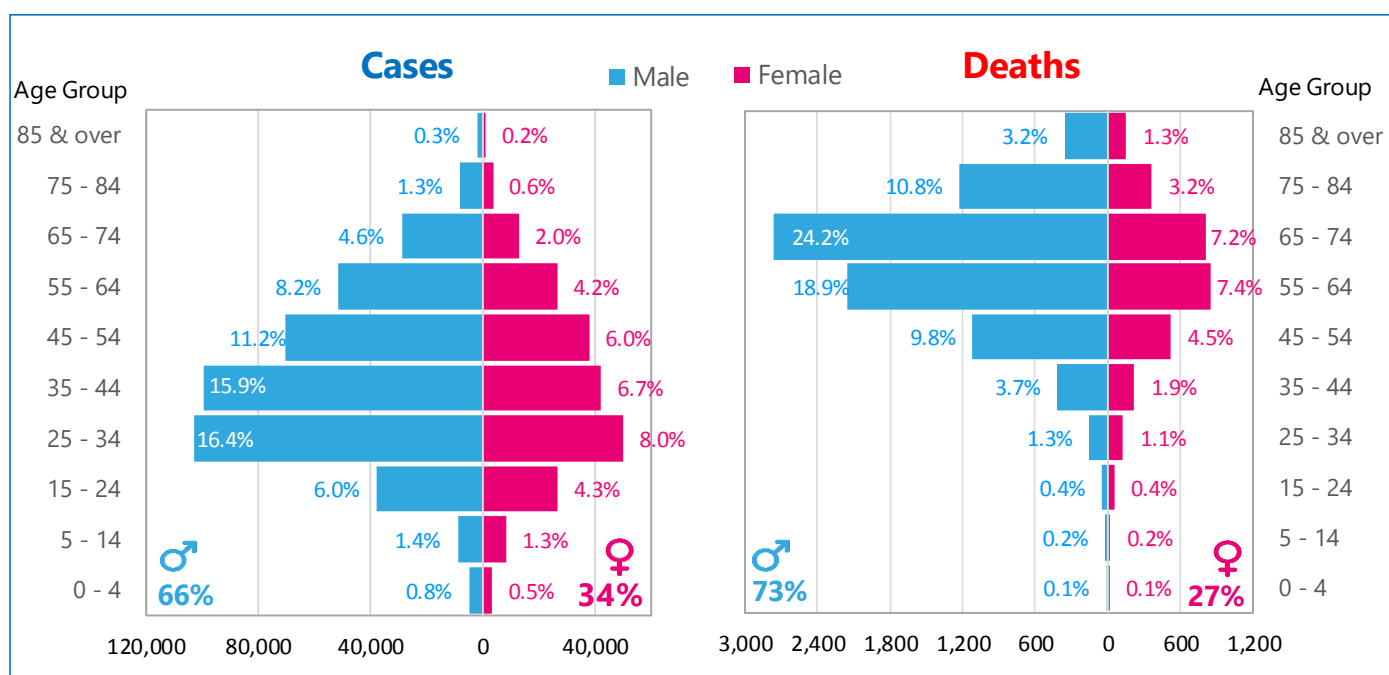
The figure below shows the Test Positivity Ratio (TPR) and Adjusted TPR by Division, as of 02 MAY 2021



The map below is showing the distribution of COVID-19 cases, weekly growth, and TPR by district, Bangladesh



The figure below is showing the Age-Sex distribution of COVID-19 cases and Deaths as of 02 MAY 2021



4. Points of Entry (PoE) & Quarantine

In the reported week (week 17, 2021), the number of international flights arrived at the three international airports has increased by **22%** than the week before (**175** and **143** flights, respectively), and the number of incoming passengers has increased by **193%** (**16 107** and **5 055** persons, respectively). In the reported week, **8 766** travellers were sent for institutional quarantine, and **7 289** sent for home quarantine after passenger screening at the Points of Entry.

The table below is showing the quarantine status of incoming travellers as captured through PoE Surveillance, 19 APR – 02 MAY 2021, Bangladesh

Points of Entry	Home Quarantine	Facility Quarantine	Facility Isolation	Total Traveller
Benapole LC, Jashore	0	1 252	7	1 259
Akhaura LC, Brahmanbaria	3	0	45	48
HSIA, Dhaka	7 286	7 514	0	14 800
SAIA, Chattogram	0	0	0	0
OIA, Sylhet	0	0	0	0
Total	7 289	8 766	52	16 107

* HSIA: Hazrat Shahjalal International Airport, SAIA: Shah Amanat International Airport, OIA: Osmani International Airport, LC: Land Crossing

According to DGHS, as of 02 May 2021, the country's current institutional quarantine capacity is represented by **629** centres across the 64 districts, receiving **31 991** persons. A total of **59 605** individuals were placed in quarantine facilities, and **53 544 (90%)** of them have already been released. Over the same period, a total of **123 531** individuals were isolated in designated health facilities, and **104 012 (84%)** of them were released.

During the reporting week, six (**6**) positive case (travelled from India) was identified at the IHR designated PoE (Benapole Land Crossing) of the country. During the week, a total of seven (7) person was sent to Facility Quarantine after passenger screening at Benapole Land Crossing.

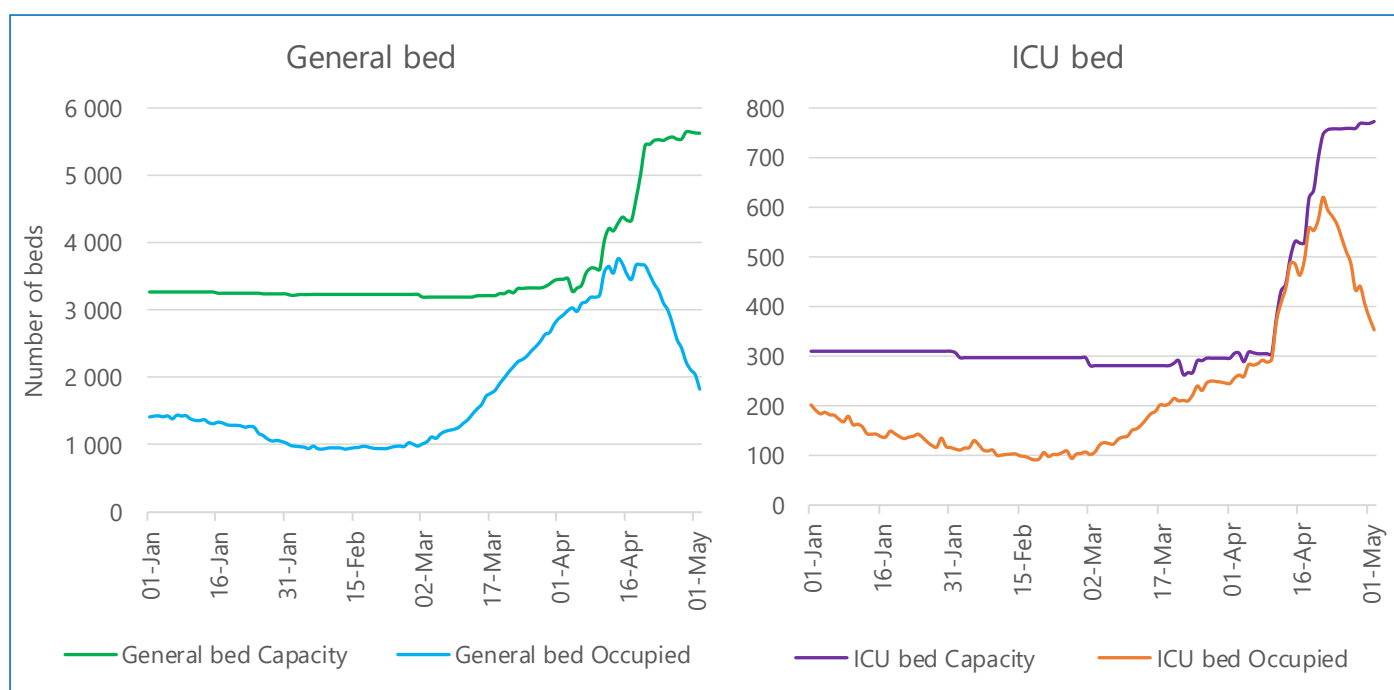
5. Case Management and Infection Prevention & Control

According to DGHS, as of 02 May 2021, there are **12 347** general beds dedicated to COVID-19 treatment countrywide, **28.1%** (3 474) of which are occupied. **45.6%** of the dedicated general beds are in Dhaka City. There are **1 092** dedicated ICU beds in the country, of which **48.3%** (527) are occupied; **70.8%** of the dedicated ICU beds are in Dhaka City.

The table below is showing the bed occupancy in COVID-19 dedicated facilities, as of 02 MAY 2021

	National				Dhaka			
	2-May	25-Apr	18-Apr	11-Apr	2-May	25-Apr	18-Apr	11-Apr
General beds	12 347	12 271	11 201	10 364	5 626	5 553	4 871	4 023
Empty	8 873	7 231	5 480	4 880	3 799	2 556	1 086	461
Gen. bed Occupancy	28.1%	41.1%	51.1%	52.9%	32.5%	54.0%	77.7%	88.5%
ICU beds	1 092	1 068	924	672	773	758	638	377
Empty	565	355	189	142	420	219	288	7
ICU bed Occupancy	48.3%	66.8%	79.5%	78.9%	45.7%	71.1%	54.9%	98.1%

The figure below is showing the trend of COVID-19 dedicated General bed and ICU capacity in Dhaka city, 01 JAN - 02 MAY 2021



6. Vaccination

The nationwide COVID-19 vaccination was launched on 7 February 2021 and the 2nd dose inoculation was started on 8 April 2021. Since the beginning, as of 02 May 2021, a total of 8 755 950 doses of Oxford/AstraZeneca (COVISHIELD) vaccine were administered in the whole country, out of which, 5 819 709 people received their 1st dose and 2 936 241 completed for their two doses schedule. Total 3 608 805 (62%) males and 2 210 904 (38%) females received their 1st dose of vaccine, while, 1 902 405 (65%) males and 1 033 836 (35%) females received their 2nd doses of vaccine. So far, 11.7% of the country's eligible population has been vaccinated, while in Dhaka metropolitan the coverage is 38.0%. All

the COVID-19 vaccination sites are functional during this holy month of Ramadan to get the 2nd dose of COVID-19 only. Last week, the Sinopharm COVID-19 vaccine developed by the Beijing Institute of Biological Products and the Sputnik V by the Gamaleya National Center, Russia received emergency use authorization from the Directorate General of Drug Administration in Bangladesh.

The table below shows the number of 1st and 2nd shot of COVID-19 vaccine administered, 27 JAN – 02 MAY 2021

Division	1 st dose administered	% of population* taken the 1 st shot	2 nd dose administered	% of population* taken the 2 nd shot
Barishal	251 344	8.8%	130 295	4.5%
Chattogram	1 178 022	12.0%	636 711	6.5%
Dhaka	1 807 972	14.4%	935 455	7.5%
Khulna	731 089	13.5%	368 186	6.8%
Mymensingh	289 229	7.6%	126 796	3.4%
Rajshahi	663 954	10.4%	301 534	4.7%
Rangpur	596 943	11.0%	262 975	4.8%
Sylhet	301 156	8.8%	174 289	5.1%
Total	5 819 709	11.7%	2 936 241	5.9%

7. Useful links for more information

- WHO Bangladesh COVID-19 Situation Reports:
[https://www.who.int/bangladesh/emergencies/coronavirus-disease-\(covid-19\)-update/coronavirus-disease-\(covid-2019\)-bangladesh-situation-reports](https://www.who.int/bangladesh/emergencies/coronavirus-disease-(covid-19)-update/coronavirus-disease-(covid-2019)-bangladesh-situation-reports)
- WHO Cox's Bazar Situation reports:
<https://ln2.sync.com/dl/f33b85a60/99r3nuhb-zebna3tg-kun4acy3-mvyxqv56>
- COVID-19 Situation in the WHO South-East Asia Region:
<https://experience.arcgis.com/experience/56d2642cb379485ebf78371e744b8c6a>
- WHO global Weekly Epidemiological Update and Weekly Operational Update:
<https://www.who.int/emergencies/diseases/novel-coronavirus-2019/situation-reports/>
- WHO Bangladesh awareness and risk communication materials in Bengali:
[https://www.who.int/bangladesh/emergencies/coronavirus-disease-\(covid-19\)-update](https://www.who.int/bangladesh/emergencies/coronavirus-disease-(covid-19)-update)
- COVID-19 WHO Online Training modules:
<https://www.who.int/emergencies/diseases/novel-coronavirus-2019/training/online-training>
- COVID-19 updates from the Directorate General of Health Services, Ministry of Health and Family Welfare, Government of The People's Republic of Bangladesh:
<https://dghs.gov.bd/index.php/en/component/content/article?id=5393>
- Institute of Epidemiology, Disease Control and Research (IEDCR):
<https://iedcr.gov.bd/covid-19/covid-19-general-information>