












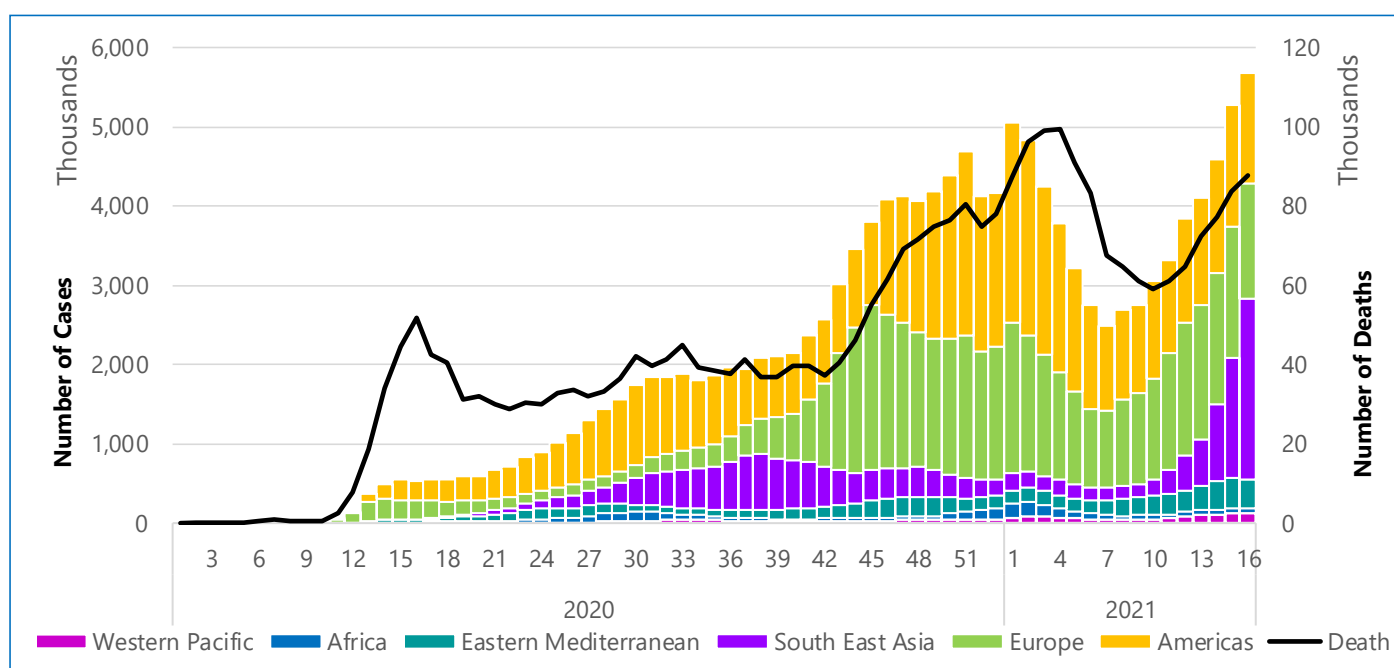
Tested	Confirmed Cases	Recovered	Death	Hotline
 5 345 501	 745 322	 657 452	 11 053	 27.39 million
Test/100 000/Week	Case/100 000/Week	Recovery Rate	CFR%	AR/100 000
89	15	88.2%	1.48	438
Testing Lab/Centres Number Tests (N=350)			PoE Screening	
RT PCR Lab : 122 5 267 449				1 504 677
GeneXpert Lab : 34 40 317				
Rapid Antigen : 194 37 735				
Last week daily Test average: 25 062				79 786
Vaccination				7 029
Persons registered 7 224 307				502 853
Vaccinated (1 <sup>st</sup> dose) 5 818 400				
Vaccinated (2 <sup>nd</sup> dose) 2 326 866				
National coverage (1 <sup>st</sup> dose) 11.7%				
Dhaka city coverage (1 <sup>st</sup> dose) 38.0%				
<div><div><div>PCR 98.5%</div><div>GeneX 0.8%</div><div>AgRDT 0.7%</div></div><div><div>Female 38%</div><div>Male 62%</div></div></div> <div>1<sup>st</sup> dose by Gender</div>				
Date Source: Directorate General of Health Services, MoHFW, Bangladesh				

Date Source: Directorate General of Health Services, MoHFW, Bangladesh

## 1. Global Situation

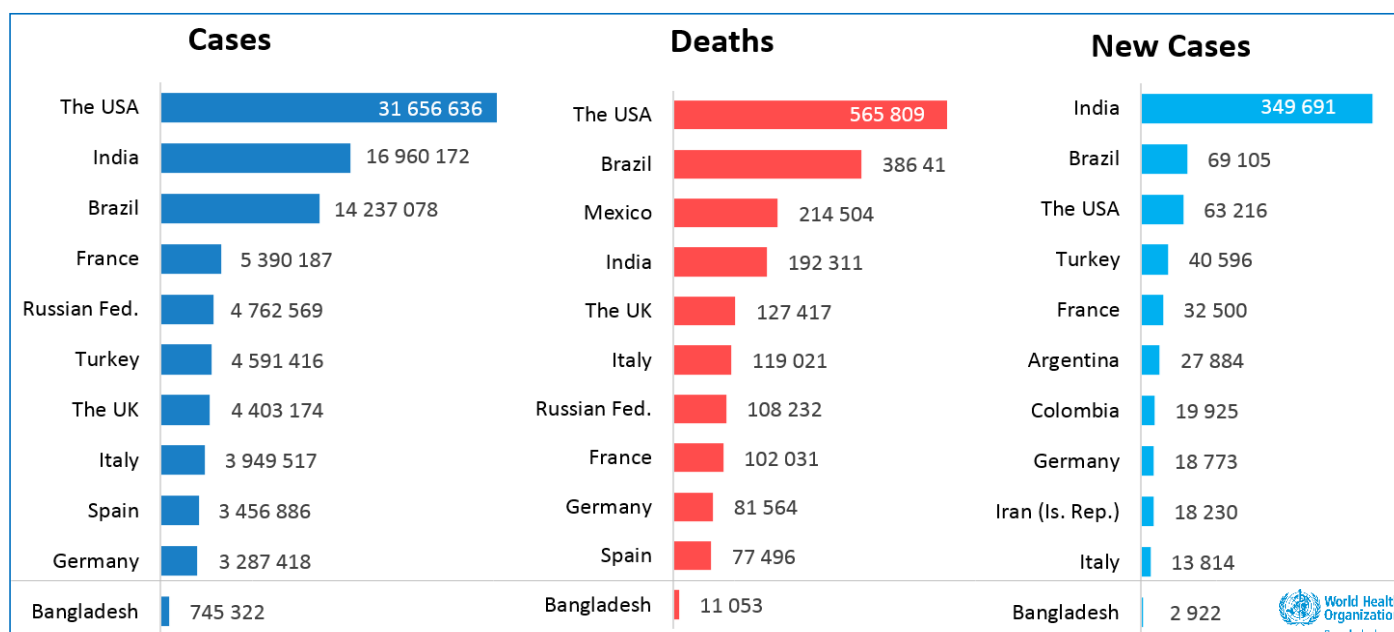
Globally, as of 10:00 PM, on 25 April 2021, there have been **146 054 107** confirmed cases of COVID-19, including **3 092 410** deaths, received by the WHO from national authorities. The USA, the world's worst-hit country, has counted **31 656 636** (63 216) cases with **565 809** (868) deaths, followed by India with **16 960 172** (349 691) cases and the fourth-highest death of **214 504** (2 767). Brazil reported the third-highest cases of **14 237 078** (69 105) and the second-highest deaths of **386 416** (2 914); Mexico reported the third-highest death of **214 504** (409).

*The figure below shows the weekly cases of COVID-19 by WHO region and death as of 25 APR 2021*



Over **5.6 million** new cases were reported last week, a **7.7%** increase than the previous week. Weekly cases increased the highest in the South-East Asia Region (**49.4%**) followed by the Western Pacific Region (**2.3%**); weekly cases decreased in the European Region by **12.5%**, the African Region (**8.9%**), the Region of Americas (**8.3%**), and the Eastern Mediterranean Region by **2.1%**. Globally, 124 (**53%**) countries/territories are seeing declines while 81 (**34%**) are experiencing increasing numbers of new cases; the remaining 31 (**13%**) have no growth during the reporting week.

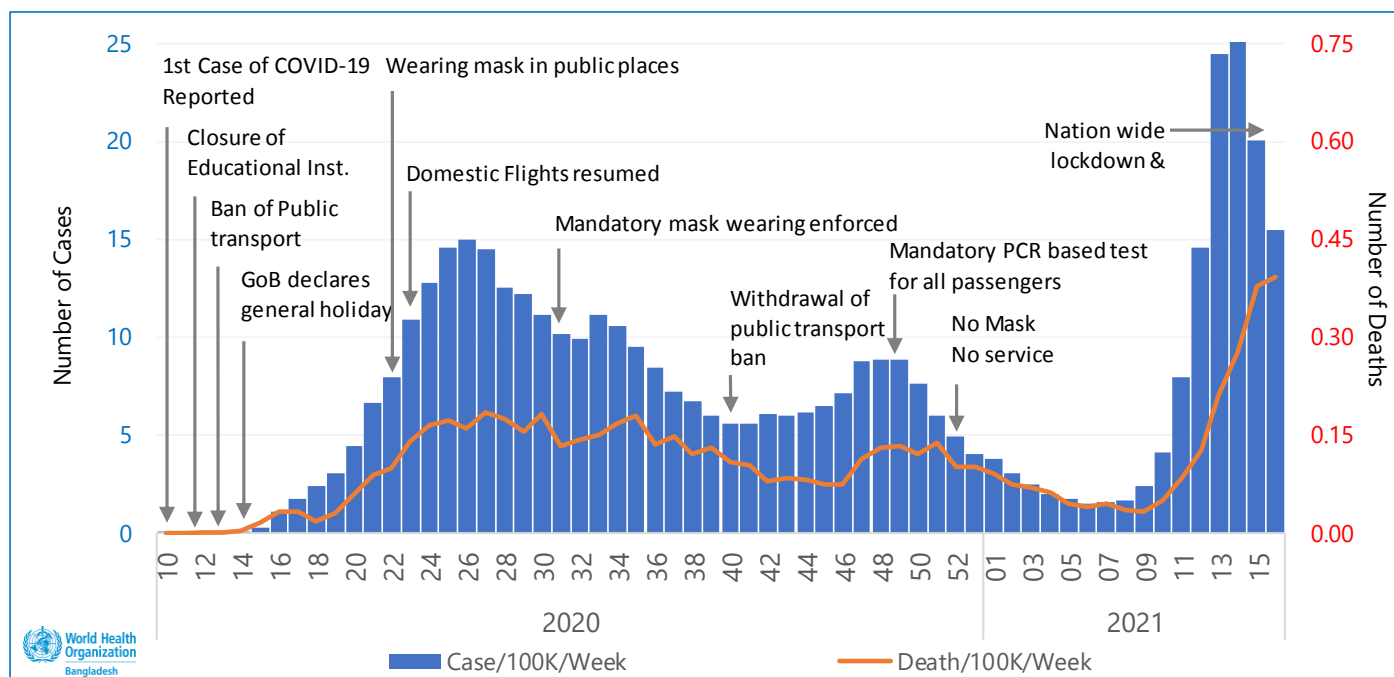
*The figure below shows top-ranked countries for total Cases, Deaths, and New cases of COVID-19, 01 JAN 2020 – 25 APR 2021*



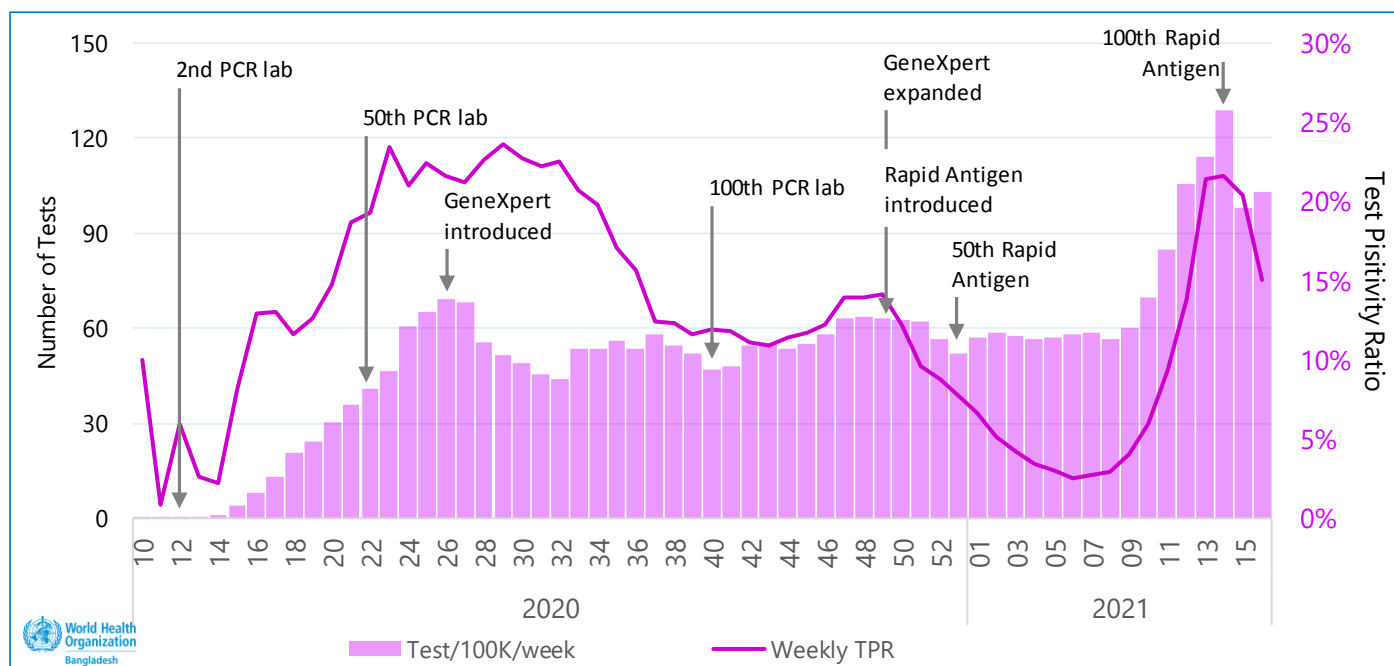
## 2. Bangladesh Situation

Between 8 March 2020 and 25 April 2021, according to the DGHS Press Release <<https://corona.gov.bd/press-release>> there were seven hundred forty-five thousand, three hundred twenty-two (**745 322**) COVID-19 cases confirmed by RT-PCR, GeneXpert, and Rapid Antigen tests including eleven thousand, fifty-three (**11 053**) related deaths (**CFR 1.48%**). Bangladesh is among the top **33** countries and accounts for **0.51%** of the COVID-19 cases of the world.

The figure below is showing the weekly cases of COVID-19 PHSM as of 25 APR 2021



The graph below is showing the weekly number of samples tested and the Positivity ratio, as of 18 APR 2021



In the past week (epidemiological week 16, 2021), Bangladesh reported **26 372** new cases, a **22.9% decrease** compared to last week; the case per 100 000 population per week is **15.5**. The country reported **668** new death, a **3.4% increase**; death per 100 000 per week is **0.4**. The weekly new test is **175 434** (daily average: **25 062**), a **4.9% decrease** than the week before; tests per 100 000 per week is **103**; the weekly average test positivity rate (TPR) is **15.0%**, TPR **decreased** by **26.5%** from last week. Overall Case Fatality Ratio (CFR) is **1.48%** which was 1.44% last week.

### 3. Surveillance & Laboratory

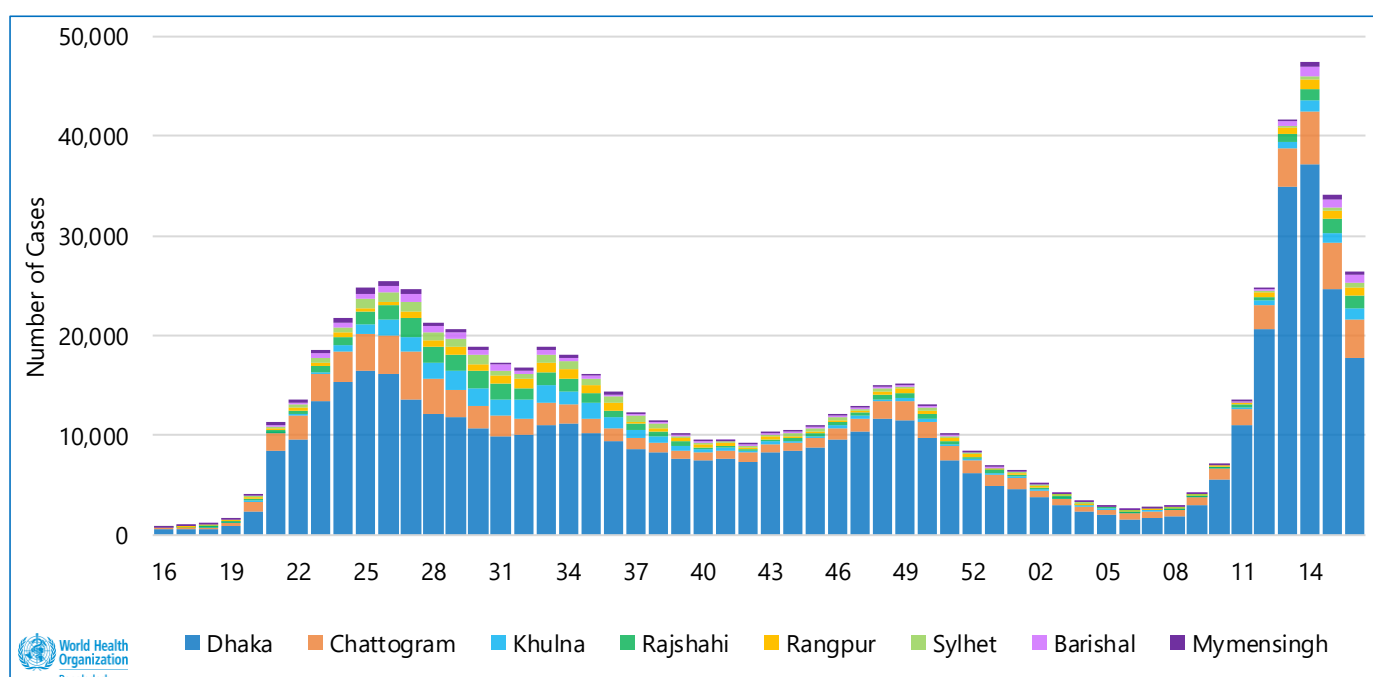
As of 25 April 2021, **71.2%** of reported cases were from Dhaka division (**61.3%** at Dhaka city), Chattogram – **12.4%**, Rajshahi – **4.2%**, Khulna – **4.1%**, Sylhet – **2.6%**, Rangpur – **2.4%**, Barishal – **1.9%** and the lowest **1.2%** from Mymensingh division. While **58.4%** of the reported death were from Dhaka division (**34.7%** at Dhaka city), Chattogram – **18.1%**, Khulna – **6.1%**, Rajshahi – **5.2%**, Rangpur – **3.7%**, Sylhet – **3.4%**, Barishal – **3.0%**, and the lowest **2.1%** from Mymensingh division.

*The table below is showing the distribution of COVID-19 case and death as of 18 APR 2021*

Division	08 MAR 2020 – 25 APR 2021			Week 16, 2021 (19 APR - 25 APR 2021)		
	Cases	Death	CFR (%)	Cases	Weekly Change	Death
Dhaka	530 553	6 451	1.22%	18 203	-34%	417
Chattogram	92 267	2 000	2.17%	4 047	-12%	126
Rajshahi	31 094	578	1.86%	1 253	11%	31
Khulna	30 395	673	2.21%	1 113	-3%	32
Sylhet	19 758	373	1.89%	828	-17%	16
Rangpur	17 748	415	2.34%	444	22%	16
Barishal	14 181	328	2.31%	922	-14%	15
Mymensingh	9 326	235	2.52%	338	21%	16
<b>National</b>	<b>745 322</b>	<b>11 053</b>	<b>1.48%</b>	<b>27 148</b>	<b>-3%</b>	<b>669</b>

In the epi-week 16, the Khulna division has the highest growth of weekly new cases, **8.4%** (1 162 this week and 1 072 in the week before), followed by Sylhet **5.3%** (798 and 758 respectively). The Dhaka division reported the highest number (17 748) of new cases, **41** new cases per 100 000/week with a **decrease of 27.9%** of weekly cases; and the Mymensingh division reported the lowest number (308) of new cases, **2** new cases per 100 000/week. Out of the **745 322** COVID-19 cases registered as of 25 April 2021, **88.2%** (657 452) recovered, **10.3%** (76 817) were active cases, and the remaining died (previously mentioned as CFR). In epidemiological week 16, the average number of COVID-19 active cases **decreased** by **15.5%** compared to the week before (**83 688** and 99 082 respectively); during the same time, recovery increased by **10.9%** (**42,516** in the current week and 38 346 in the week before).

*The figure below is showing the weekly cases of COVID-19 by division as of 25 APR 2021*

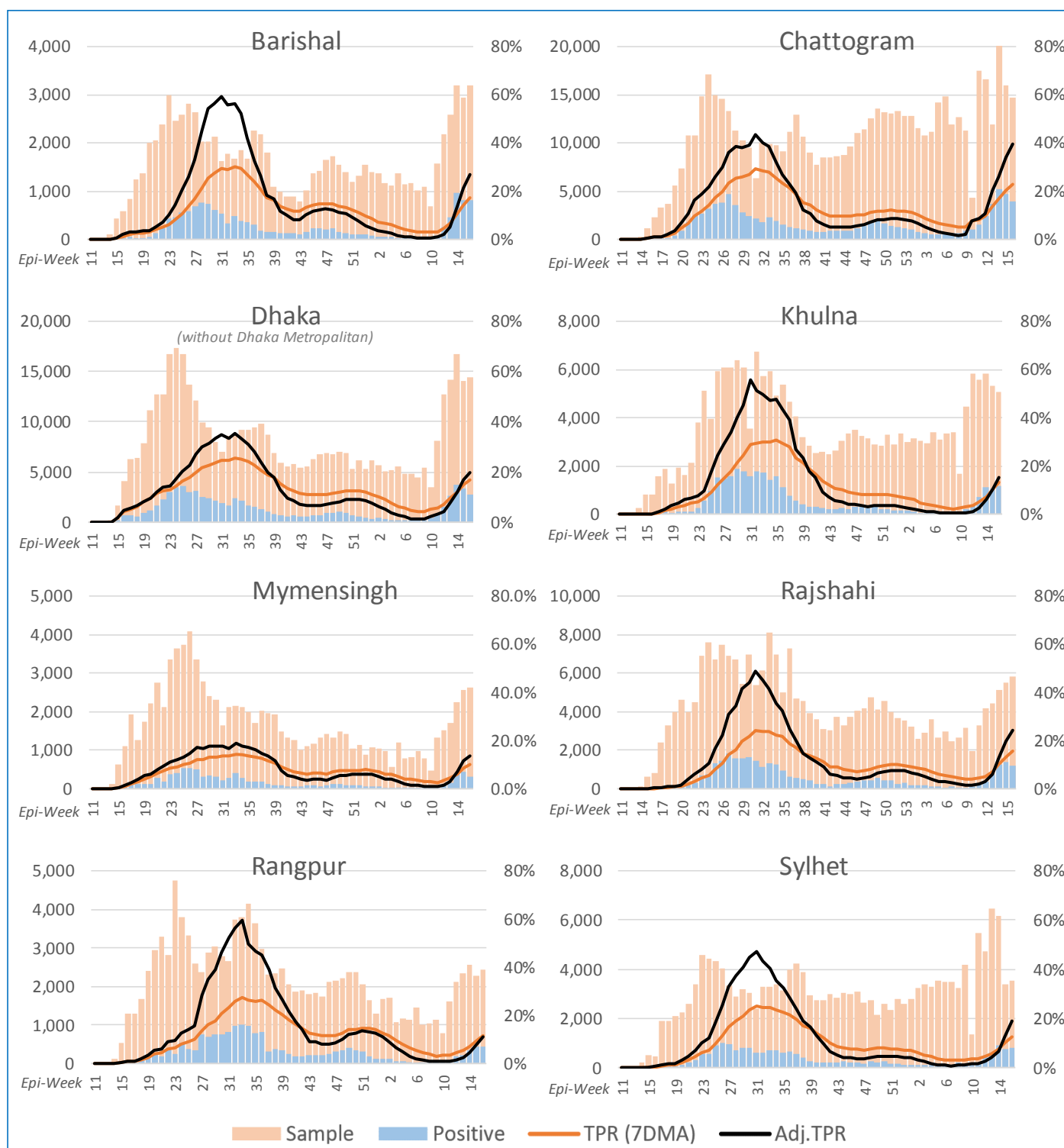




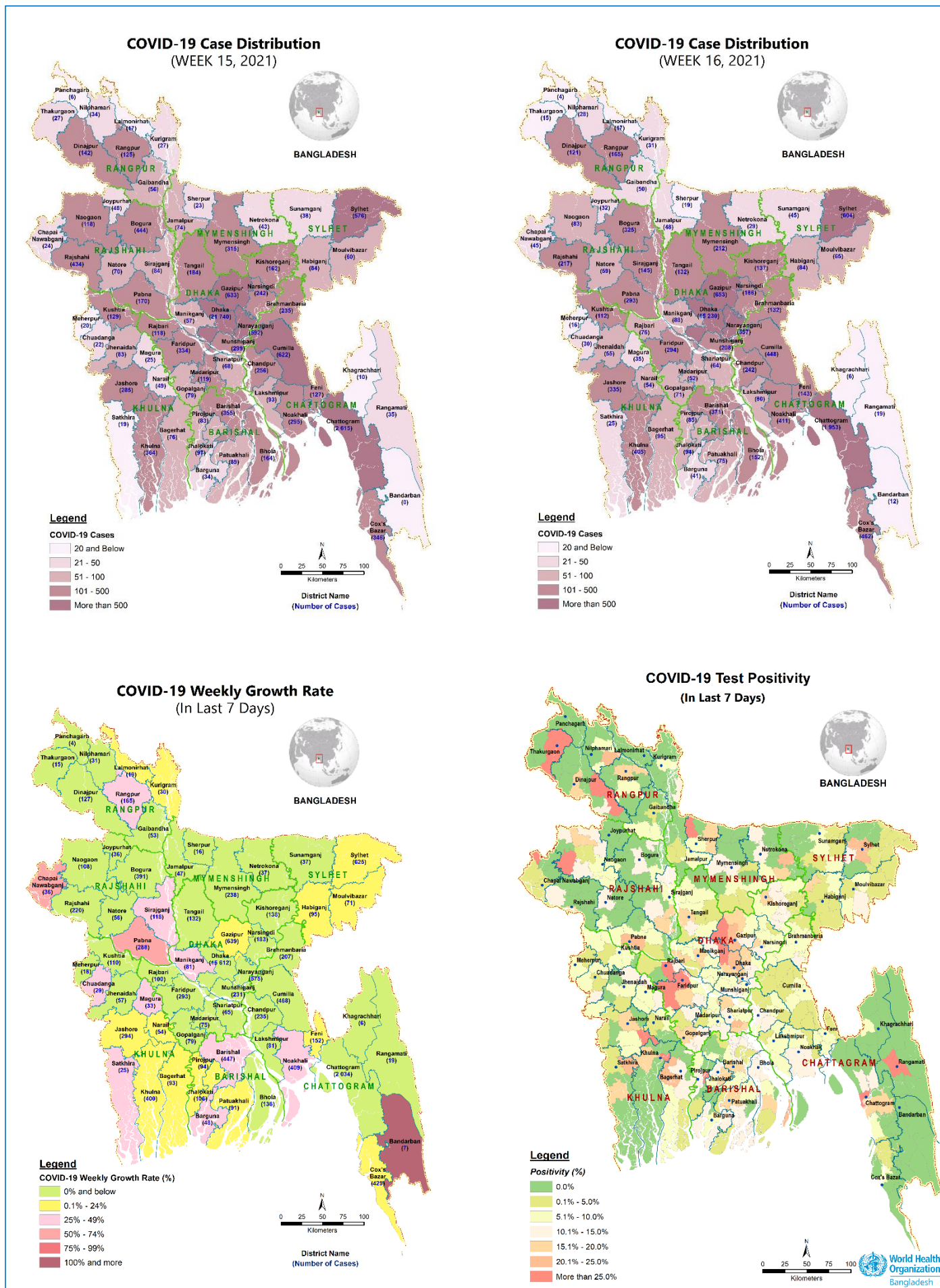
The highest number of weekly cases (**47 392**) reported in the epi-week **14**, 2021 (05-11 APR), and the highest daily cases **7 626** was recorded on 07 April 2021. The highest weekly death (**646**) was recorded in week **16**, 2021 (19-25 APR), with the highest daily death of **112** on 19 April 2021. In the reported week, COVID-19 daily average cases decreased to **3 767** from 4 885 in the week before.

As of 25 April 2021, according to the DGHS Press Release, **5 345 501** COVID-19 tests (RT-PCR **98.5%**, GeneXpert **0.8%**, and Rapid Antigen **0.7%**) were conducted in Bangladesh with an overall positivity rate of 13.94% (**13.33%** in the last 24 hours) by **350** laboratories/test centres. So far, **74.0%** of the samples (3,957,454) have been tested for COVID-19 in government facilities (RT-PCR **52/122**, GeneXpert **32/34**, and Rapid Antigen **194/194**). During the last week, one (1) RT-PCR lab (Medical Center Hospital, Chattogram) and **92** Rapid Antigen test centres have been added to the network of COVID-19 testing facilities.

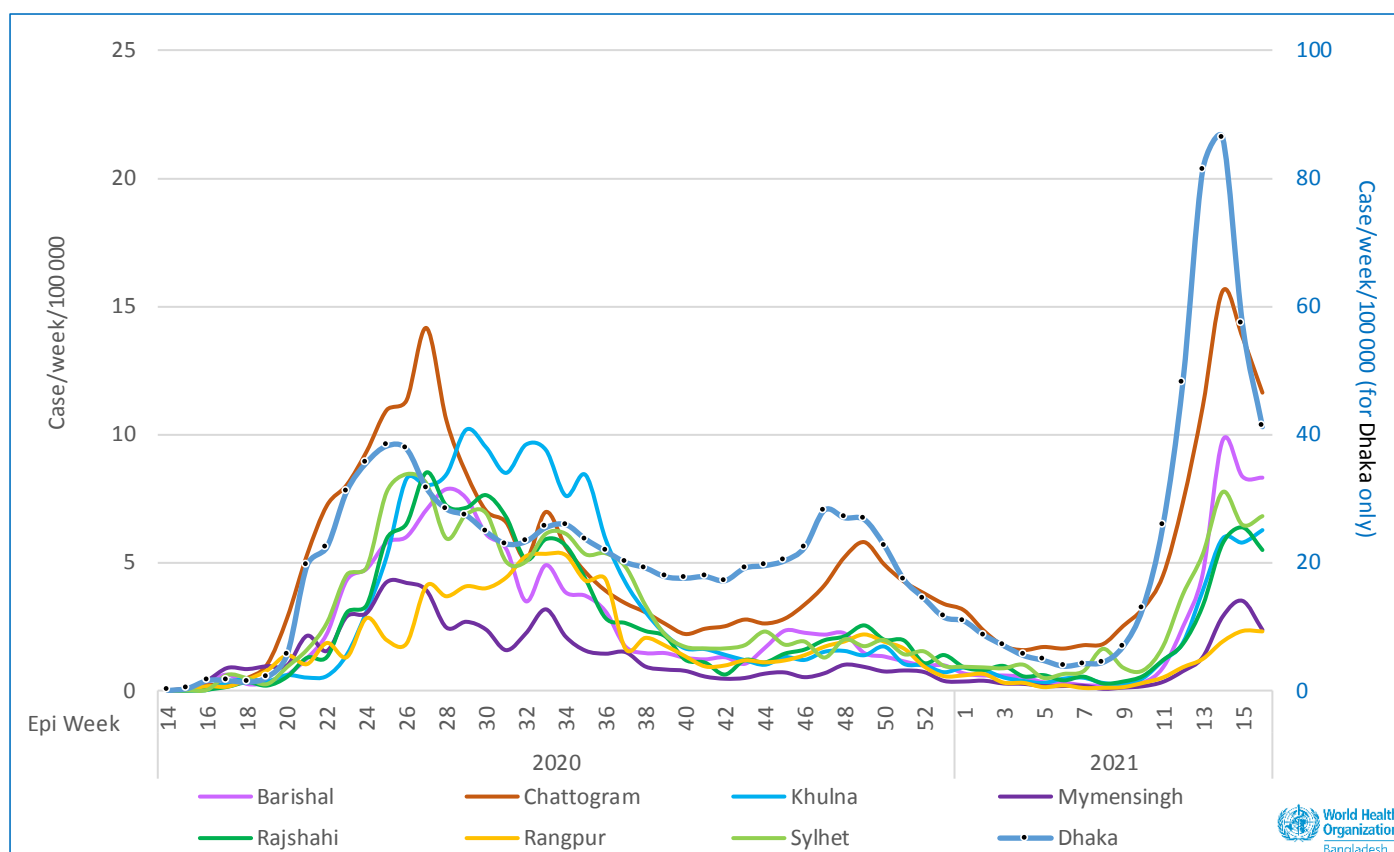
**The figure below shows the Test Positivity Ratio (TPR) and Adjusted TPR by Division, as of 15 APR 2021**



The map below is showing the distribution of COVID-19 cases, weekly growth, and TPR by district, Bangladesh



The figure below is showing the trend of COVID-19 cases normalized by population, as of 25 APR 2021



#### 4. Points of Entry (PoE) & Quarantine

In the reported week (week 16, 2021), the number of international flights arrived at three international airports has **increased** by **138%** than the week before (143 and 60 flights, respectively), and the number of incoming passengers has **decreased** by **18%** (5 055 and 6 171 persons, respectively). In the reported week, **4 637** traveller was sent to facility quarantine, and **3 867** sent for home quarantine after passenger screening at the Points of Entry.

The table below is showing the quarantine status of incoming travellers as captured through PoE Surveillance, 19 APR – 25 APR 2021, Bangladesh

Points of Entry	Home Quarantine	Facility Quarantine	Facility Isolation	Total Traveller
Akhaura LC, Brahmanbaria	171	0	0	171
Benapole LC, Jashore	3 234	44	14	3 292
HSIA, Dhaka	462	4 593	0	5 055
SAIA, Chattogram	0	0	0	0
OIA, Sylhet	0	0	0	0
<b>Total</b>	<b>3 867</b>	<b>4 637</b>	<b>14</b>	<b>8 518</b>

\* HSIA: Hazrat Shahjalal International Airport, SAIA: Shah Amanat International Airport, OIA: Osmani International Airport, LC: Land Crossing

According to DGHS, as of 25 April 2021, the country's current institutional quarantine capacity is represented by **629** centres across the 64 districts, receiving **31 991** persons. A total of **58 409** individuals were placed in quarantine facilities, and 50 935 (**87%**) of them have already been released. Over the same period, **120 196** individuals were isolated in designated health facilities, and 100 758 (**84%**) were released.

**The table below is showing the distribution of incoming travellers during the last 14 days sent to home quarantine as captured through PoE Surveillance, 19 – 25 APR 2021, Bangladesh**

Khulna Div.	846	Dhaka Div.	700	Chattogram Div.	450	Rajshahi Div.	347
Khulna	219	Dhaka	324	Chattogram	272	Rajshahi	96
Jashore	214	Gopalganj	62	Cumilla	57	Naogaon	57
Satkhira	105	Faridpur	55	Brahmanbaria	24	Bogura	51
Bagerhat	81	Tangail	41	Feni	21	Pabna	47
Kushtia	72	Gazipur	38	Chandpur	19	Natore	34
Jhenaidah	52	Munshiganj	34	Noakhali	19	Chapai Nawabganj	31
Narail	39	Narayanganj	31	Cox's Bazar	15	Sirajganj	17
Magura	30	Manikganj	27	Lakshmipur	12	Joypurhat	14
Chuadanga	29	Rajbari	25	Rangamati	5		
Meherpur	5	Madaripur	24	Khagrachhari	4		
		Narsingdi	20	Bandarban	2		
		Shariatpur	10				
		Kishoreganj	9				
Rangpur Div.	146	Mymensingh Div.	94	Barishal Div.	87	Sylhet Div.	37
Dinajpur	66	Mymensingh	62	Barishal	39	Sylhet	19
Gaibandha	21	Netrokona	16	Pirojpur	17	Habiganj	11
Nilphamari	19	Jamalpur	9	Barguna	9	Moulvibazar	4
Rangpur	18	Sherpur	7	Jhalokati	8	Sunamganj	3
Thakurgaon	9			Patuakhali	8		
Panchagarh	6			Bhola	6		
Lalmonirhat	4						
Kurigram	3						

During the reporting week, **11** positive cases (travelled from India) were identified at the IHR designated PoE (Benapole Land Crossing) of the country. During the week, 14 persons were sent to facility quarantine after passenger screening at Benapole Land Crossing.

## 5. Case Management and Infection Prevention & Control

According to DGHS, as of 25 April 2021, there are **12 271** general beds dedicated to COVID-19 treatment countrywide, **41.1%** (5 040) of which are occupied. **45.3%** of the dedicated general beds are in Dhaka City. There are **1 068** dedicated ICU beds in the country, of which **68.8%** (713) are occupied; **71.0%** of the dedicated ICU beds are in Dhaka City.

**The table below is showing the bed occupancy in COVID-19 dedicated facilities, as of 25 APR 2021**

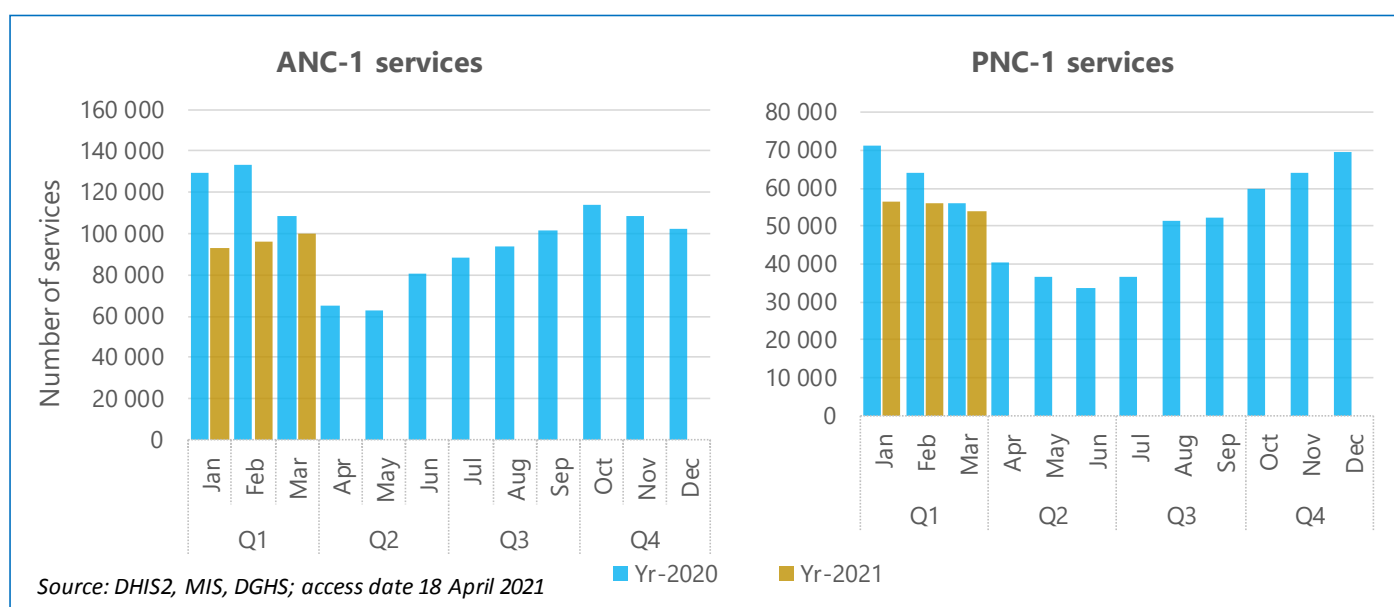
	COVID-19 Dedicated beds			COVID-19 ICU Beds		
	Capacity	Occupancy	Vacancy	Capacity	Occupancy	Vacancy
Dhaka Div.	5 553	54.0%	2 556	758	71.1%	219
Chattogram Div.	742	47.3%	391	71	64.8%	25
<b>Country total</b>	<b>12 271</b>	<b>41.1%</b>	<b>7 231</b>	<b>1 068</b>	<b>66.8%</b>	<b>355</b>

## 6. Essential Health Services

About one hundred thousand ANC-1 services were provided by the public health facilities in Bangladesh in March 2021. The ANC-1 service status in March 2021 has increased by **4%** as compared to that of February 2021. From January to March 2021, a total of **289 025** ANC-1 services were provided, which is **22%** lower than January to March 2020, indicating extra efforts are needed for the betterment of ANC-1 services. However, the current scenario of increasing COVID-19 cases and lockdown may have some adverse effects on the services.



The figure below is showing the Number of ANC-1 and PNC-1 services provided, as of 31 MAR 2021



More than fifty thousand PNC-1 services for mothers were provided by public health facilities in March 2021, which is **4%** lower as compared to February 2021. During the first quarter of 2021, more than **150** hundred thousand PNC-1 services were provided, which is **13%** lower than the first quarter of 2020 extra efforts are needed to bring the status back to normal.

## 7. Vaccination

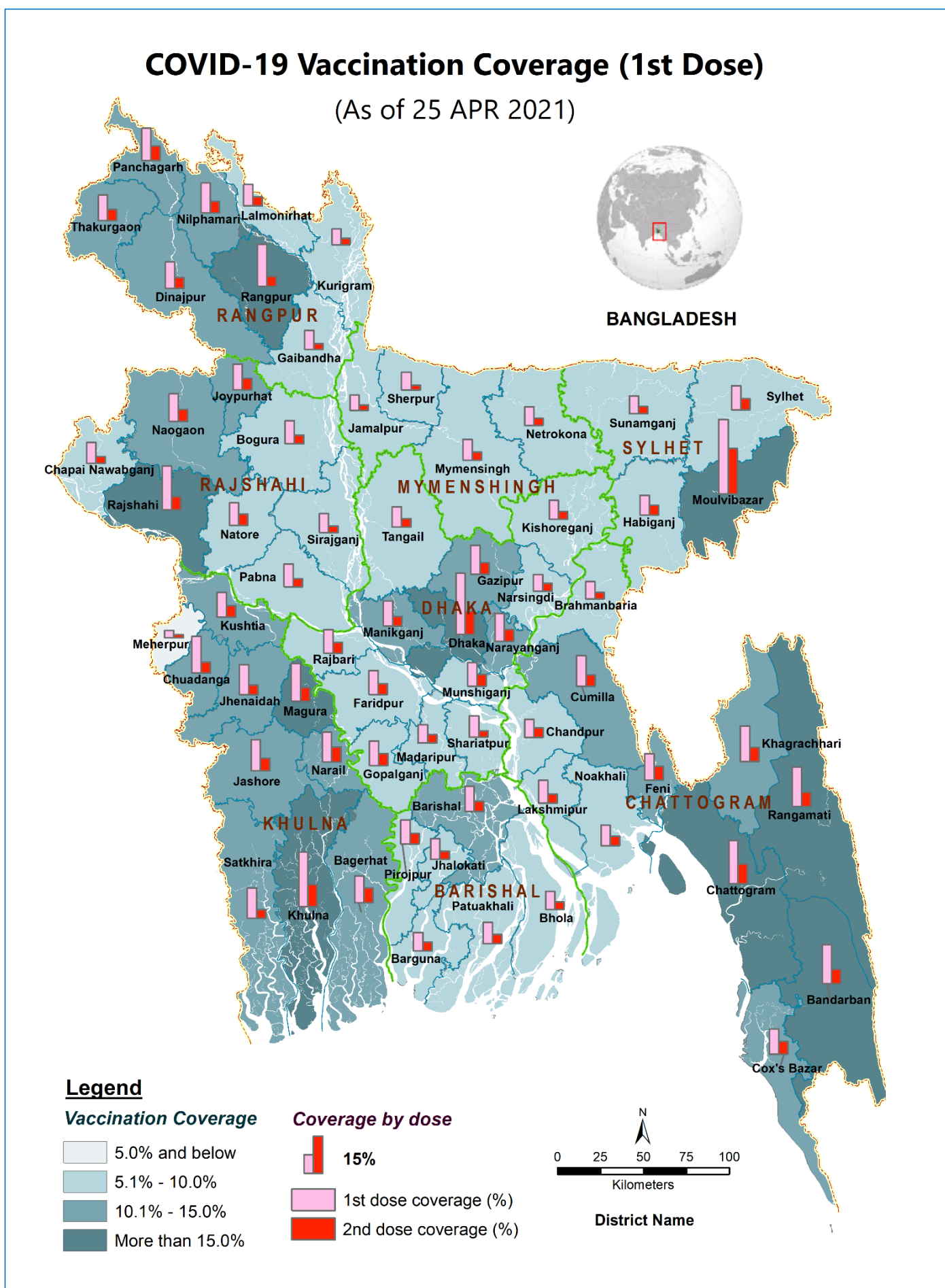
The nationwide COVID-19 vaccination was launched on 7 February 2021 and the 2nd dose inoculation was started on 8 April 2021. Since the beginning, as of 25 April 2021, a total of **8 145 266** doses of Oxford/AstraZeneca (COVISHIELD) vaccine were administered in the whole country, out of which, **5 818 400** population received their 1st dose and **2 326 866** completed for their two doses schedule. Total 3 608 059 (**62%**) males and 2 210 341 (**38%**) females received their 1st dose of vaccine, while, 1 524 709 (**64%**) males and 802 157 (**36%**) females received their 2nd doses of vaccine. So far, **11.7%** of the country's eligible population has been vaccinated with the first dose, while in Dhaka metropolitan the coverage is **38.0%**. The COVID-19 1st dose vaccination and registration in the SUROKKHA web portal will be temporarily suspended from 26 April 2021. All the COVID-19 vaccination sites are functional during this holy month of Ramadan to get the 2nd dose of COVID-19 only.

The table below shows the number of persons taken the 1<sup>st</sup> and 2<sup>nd</sup> shot of COVID-19 vaccine, 27 JAN – 25 APR 2021

Division	1 <sup>st</sup> dose administered	% of population* taken the 1 <sup>st</sup> shot	2 <sup>nd</sup> dose administered	% of population* taken the 2 <sup>nd</sup> shot
Barishal	251 119	8.8%	105 736	3.7%
Chattogram	1 177 990	12.0%	512 764	5.2%
Dhaka	1 807 514	14.4%	717 118	5.7%
Khulna	731 085	13.5%	284 642	5.3%
Mymensingh	289 202	7.6%	105 552	2.8%
Rajshahi	663 652	10.4%	244 041	3.8%
Rangpur	596 925	11.0%	210 116	3.9%
Sylhet	300 913	8.8%	146 897	4.3%
<b>Total</b>	<b>5 818 400</b>	<b>11.7%</b>	<b>2326866</b>	<b>4.7%</b>

\*Eligible population >40 years old

The map below is showing COVID-19 Vaccination coverage, as of 25 APR 2021



**8. Useful links for more information**

- WHO Bangladesh COVID-19 Situation Reports:  
[https://www.who.int/bangladesh/emergencies/coronavirus-disease-\(covid-19\)-update/coronavirus-disease-\(covid-2019\)-bangladesh-situation-reports](https://www.who.int/bangladesh/emergencies/coronavirus-disease-(covid-19)-update/coronavirus-disease-(covid-2019)-bangladesh-situation-reports)
- WHO Cox's Bazar Situation reports:  
<https://ln2.sync.com/dl/f33b85a60/99r3nuhb-zebna3tg-kun4acy3-mvyxqv56>
- COVID-19 Situation in the WHO South-East Asia Region:  
<https://experience.arcgis.com/experience/56d2642cb379485ebf78371e744b8c6a>
- WHO global Weekly Epidemiological Update and Weekly Operational Update:  
<https://www.who.int/emergencies/diseases/novel-coronavirus-2019/situation-reports/>
- WHO Bangladesh awareness and risk communication materials in Bengali:  
[https://www.who.int/bangladesh/emergencies/coronavirus-disease-\(covid-19\)-update](https://www.who.int/bangladesh/emergencies/coronavirus-disease-(covid-19)-update)
- COVID-19 WHO Online Training modules:  
<https://www.who.int/emergencies/diseases/novel-coronavirus-2019/training/online-training>
- COVID-19 updates from the Directorate General of Health Services, Ministry of Health and Family Welfare, Government of The People's Republic of Bangladesh:  
<https://dghs.gov.bd/index.php/en/component/content/article?id=5393>
- Institute of Epidemiology, Disease Control and Research (IEDCR):  
<https://iedcr.gov.bd/covid-19/covid-19-general-information>