












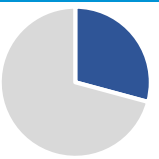
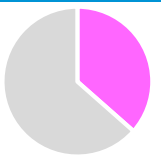


Vaccination against COVID-19

Photo Credit: Social Media, Bangladesh

Tested	Confirmed Cases	Recovered	Death	Hotline
 4,264,551	 557,395	 511,695	 8,545	 23.87 million
Test/100,000/Week	Case/100,000/Week	Recovery Rate	CFR%	AR/100,000
70.0	4.1	91.8%	1.53	327

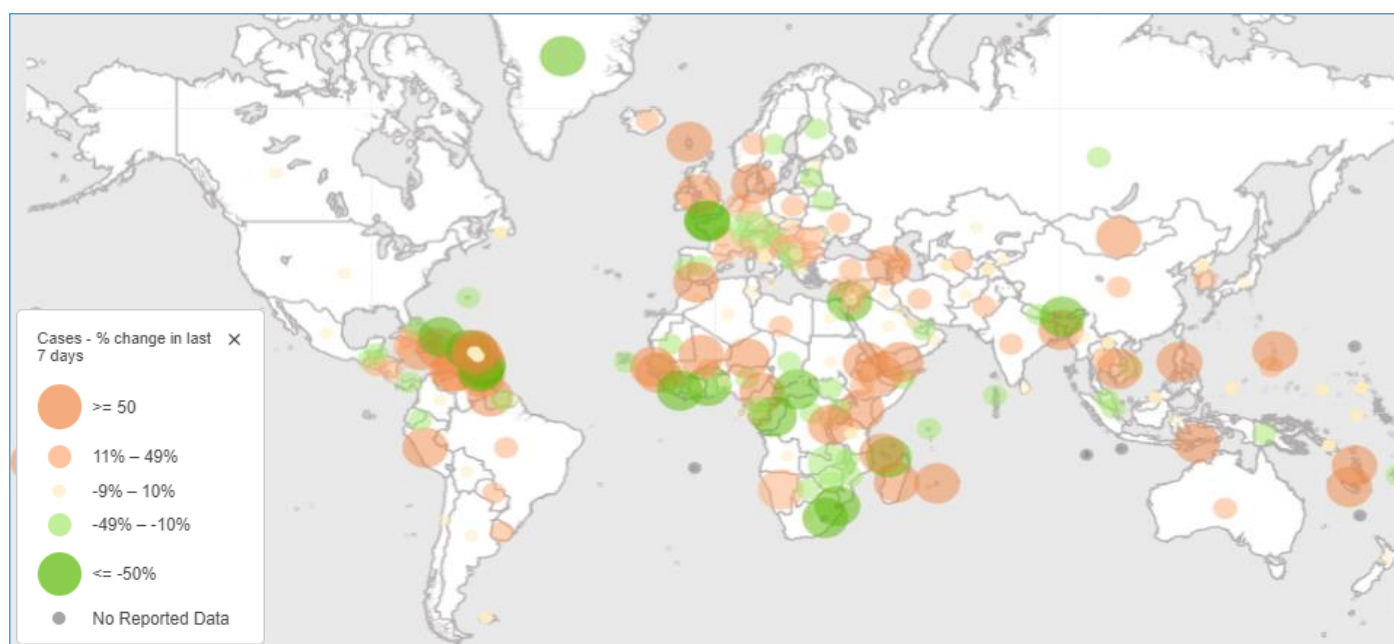
Lab/Centres	Number	Tests	PPE Stock	PoE Screening
RT PCR Lab	: 118	4,225,907	 798,220	 1,336,265
GeneXpert Lab	: 29	27,209	 7,169,305	 72,468
Rapid Antigen	: 72	11,435	 253,169	 7,029
Last week daily Test average: 16,607			 1,677,191	 476,097
Vaccination				
 29.2% Coverage in Dhaka Metro		 36.6% Female proportion		

Date Source: Directorate General of Health Services, MoHFW, Bangladesh

1. Global Situation

Globally, as of 10:13pm, 14 March 2021, there have been 119,220,401 confirmed cases of COVID-19, including 2,642,826 deaths, reported to WHO. USA, the world's worst-hit country, has counted **29,063,681** (62,840) cases with **528,456** (1,388) deaths; followed by Brazil with **11,363,380** (85,663) cases and **275,105** (2,216) deaths; while India reported the third-highest cases of **11,359,048** (25,320) and fourth-highest deaths of **158,607** (161); Mexico reported the third-highest death of **193,851** (709) at the same cut off time.

The figure below shows the percent change of Cases in the last 7 days, 14 MAR 2021



Over **3 million** new cases were reported last week, a **10%** increase compared to the previous week. Weekly cases increased in all the regions with highest in South-East Asia (**16%**) followed by western Pacific region (**15%**), the Americas and Eastern Mediterranean (**12%**), Europe (**6%**) and the lowest in African Region (**0.1%**). Globally, around one-third of countries are seeing declines while two-third are experiencing increasing numbers of new cases.

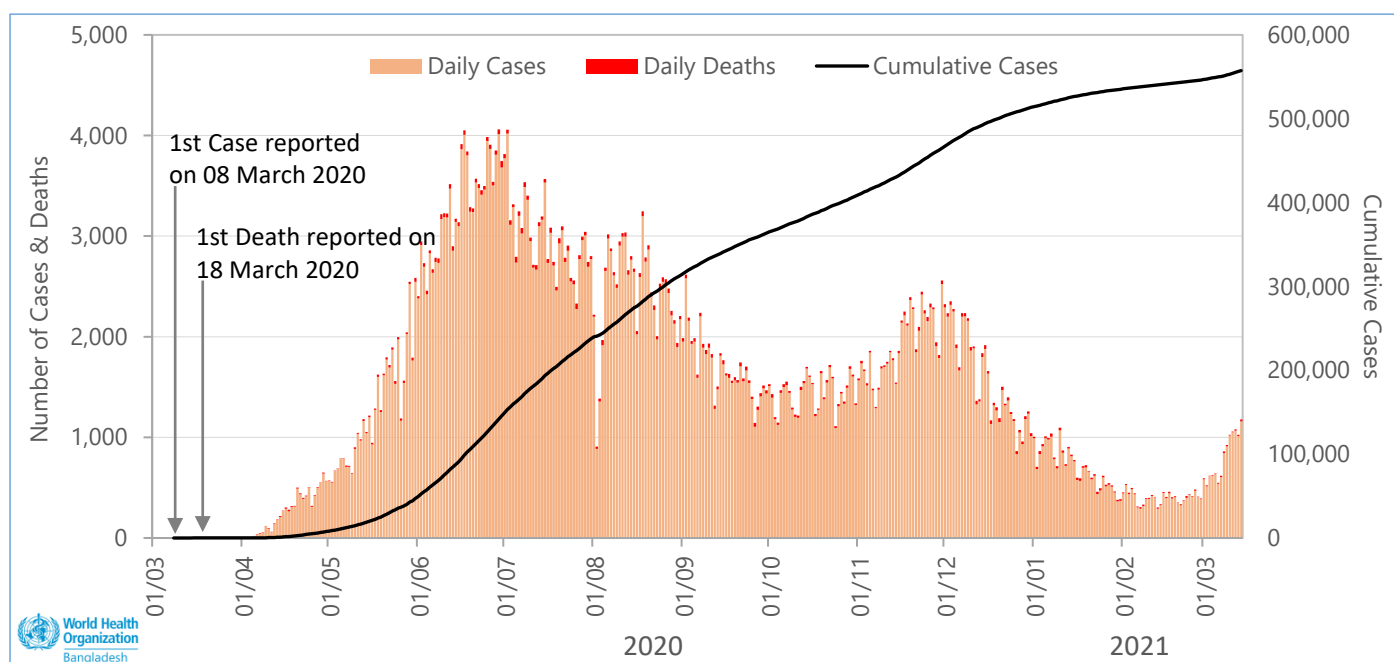
The figure below shows top-ranked countries for total Cases, Deaths and New cases of COVID-19, 01 JAN 2020 – 14 MAR 2021

Cases		Deaths		New Cases	
USA	29,063,401	USA	528,456	Brazil	133,475
Brazil	11,363,380	Brazil	275,105	USA	75,495
India	11,359,048	Mexico	193,851	France	28,424
Russia	4,390,608	India	158,607	Italy	23,633
UK	4,253,824	UK	125,464	India	23,306
France	3,975,989	Italy	101,881	Poland	18,711
Italy	3,201,838	Russia	92,090	Turkey	11,770
Spain	3,183,704	France	89,800	Haiti	9,167
Turkey	2,866,012	Germany	73,371	Germany	8,447
Germany	2,569,245	Spain	72,258	Russia	8,212
Bangladesh	557,395	Bangladesh	8,545	Bangladesh	1,159

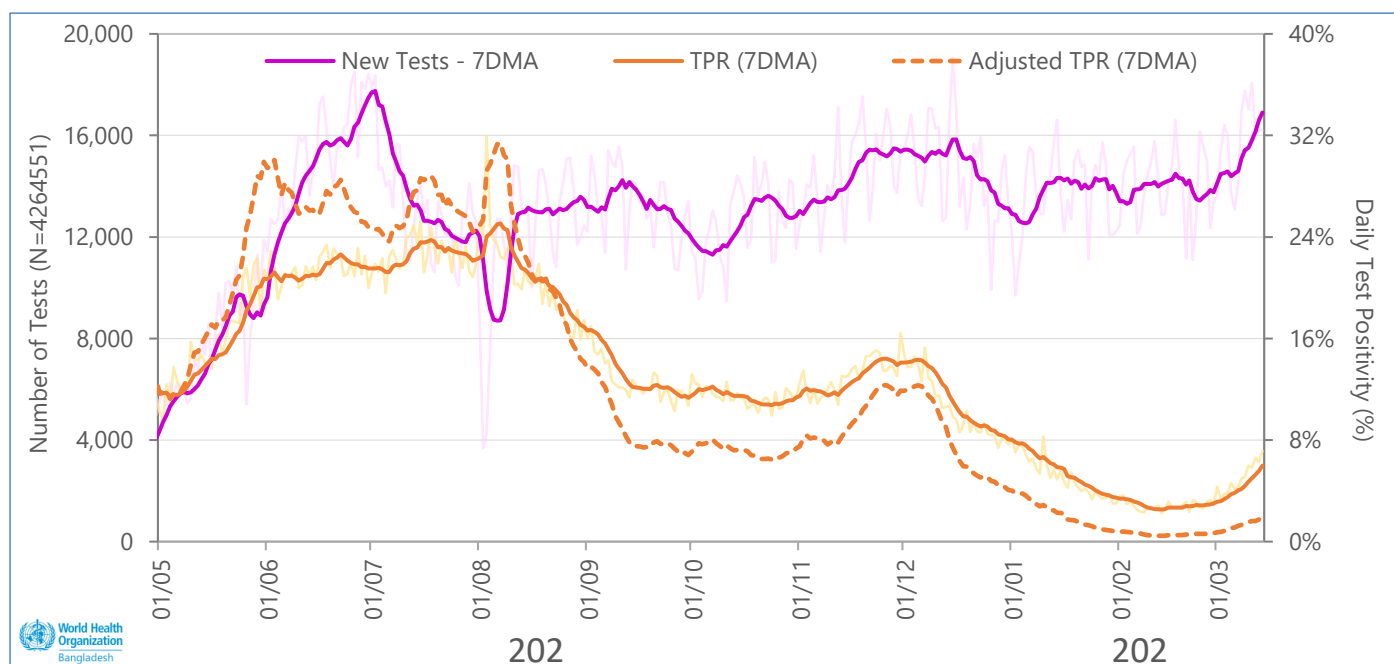
2. Bangladesh Situation

Between 8 March 2020 and 14 March 2021, according to the DGHS Press Release <<https://corona.gov.bd/press-release>> there were five hundred fifty-seven thousand, three hundred ninety-five (**557,395**) COVID-19 cases confirmed by rRT-PCR, GeneXpert and Rapid Antigen tests including eight thousand, five hundred forty-five (**8,545**) related deaths (**CFR 1.53%**). Bangladesh is among the top 33 countries and accounts for **0.47%** of the COVID-19 cases of the world.

The figure below is showing COVID-19 Cases and Deaths, 08 MAR 2020 – 14 MAR 2021, Bangladesh



The figure below showing COVID-19 Tests and Test positivity, 08 MAR 2020 – 14 MAR 2021, Bangladesh

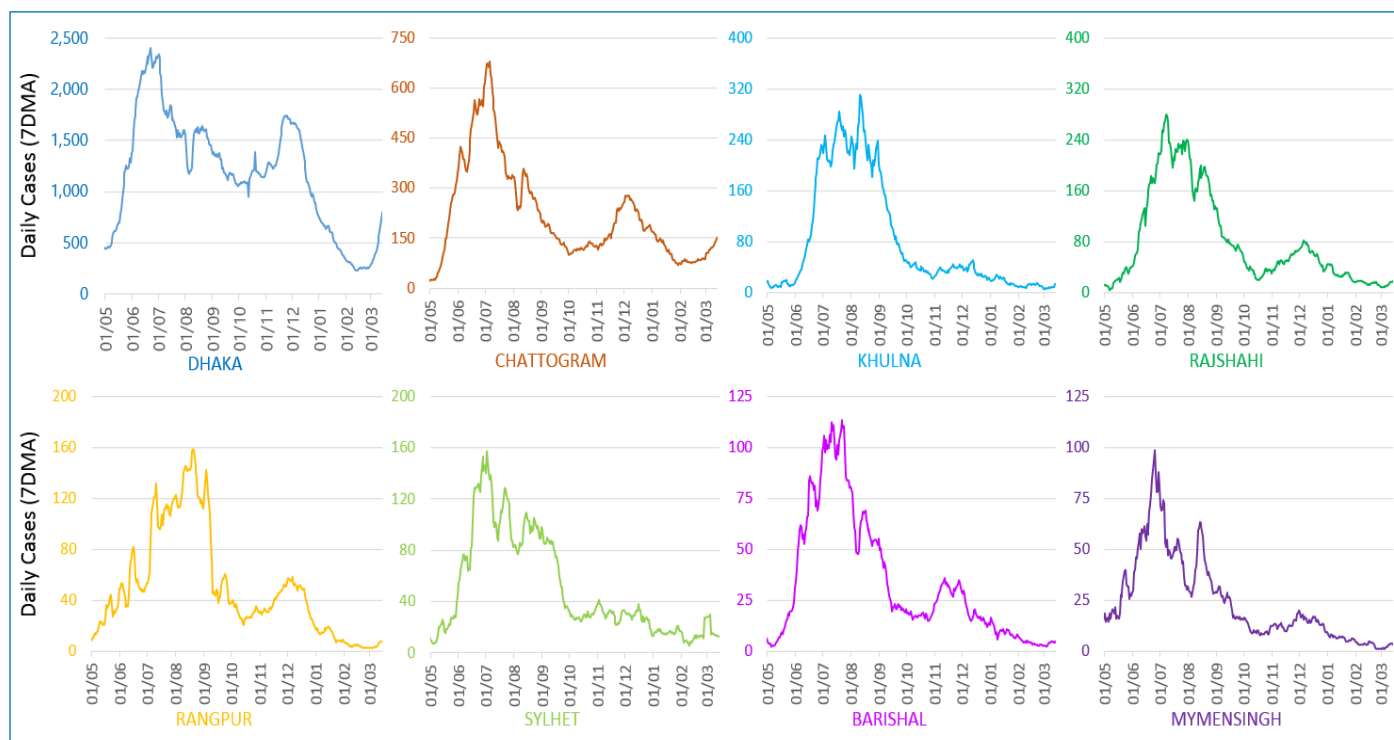


In the past week (epidemiological week 10, 2021), Bangladesh reported **7,065** new cases, a **72% increase** compared to last week; the case per 100,000 population per week is **4.1**. The country reported **83** new death, a **54% increase**; death per 100,000 per week is **0.05**. Weekly new test is **118,346** (daily average: **16,907**), a **16% increase** than the week before; tests per 100,000 per week is **70**; the weekly average of test positivity rate is **6%**, TPR **increased** by **48%** from last week. Overall Case Fatality Ratio (CFR) is **1.53%** which was 1.54% last week.

3. Surveillance & Laboratory

As of 14 March 2021, **69%** of reported cases were from **Dhaka** division (**58%** at Dhaka city), **Chattogram** – 13%, **Khulna** – 5%, **Rajshahi** – 4%, **Rangpur** – 3%, **Sylhet** – 3%, **Barishal** – 2% and the lowest 1% from **Mymensingh** division. While, **56%** of the reported death were from **Dhaka** division (30% at Dhaka city), **Chattogram** – 19%, **Khulna** – 7%, **Rajshahi** – 5%, **Rangpur** – 4%, Sylhet – 4%, **Barishal** – 3% and the lowest 2% from **Mymensingh** division.

The figure below shows COVID-19 daily Cases by division, 01 MAY 2020 – 14 MAR 2021, Bangladesh



The table below is showing the distribution of COVID-19 case and death, 08 MAR 2020 – 14 MAR 2021, Bangladesh

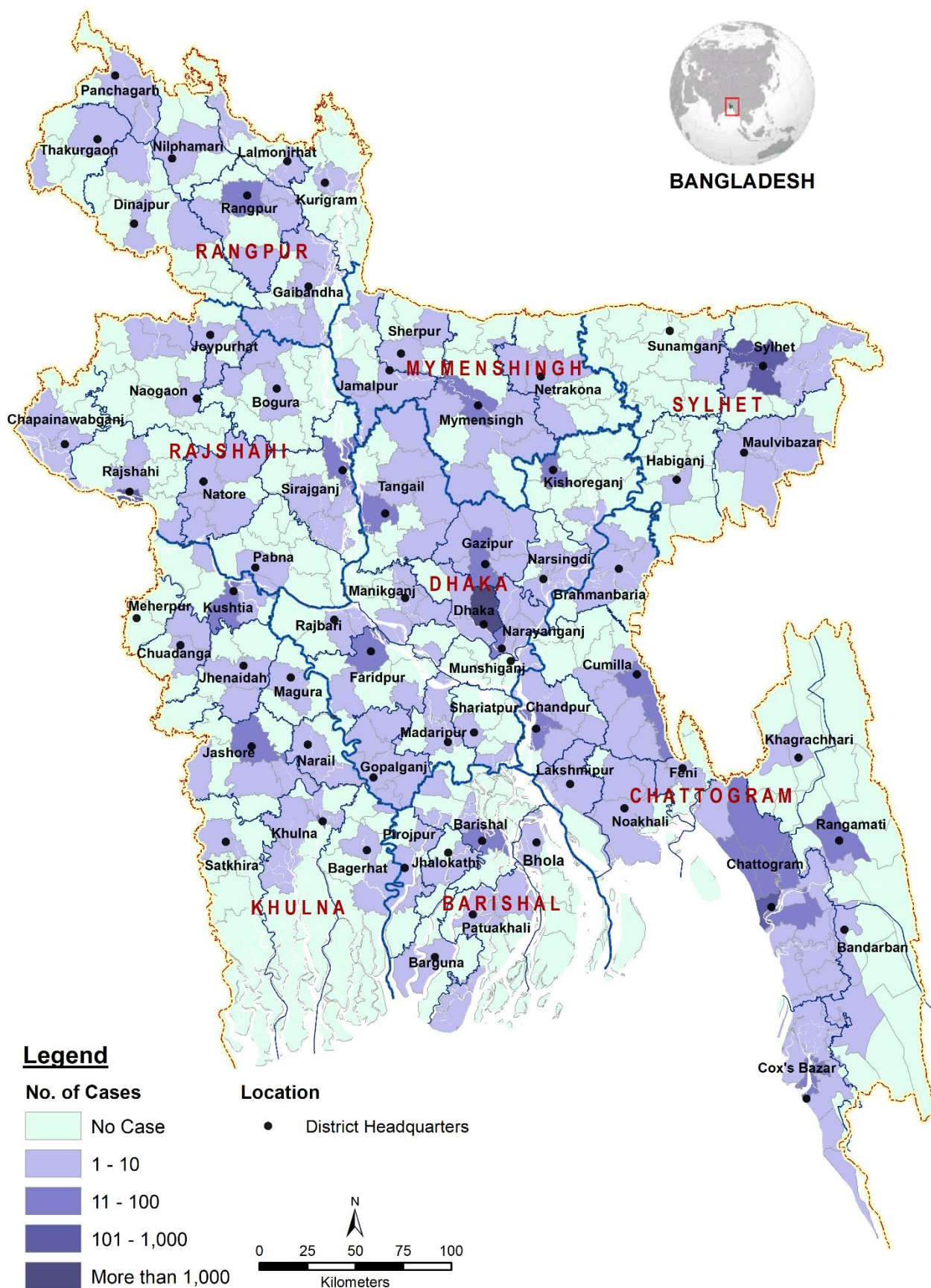
Division	Week 10, 2020 – Week 10, 2021			Week 10, 2021		
	Cases	Death	CFR (%)	Cases	Weekly Change	Death
Dhaka	384,359	4,785	1.24	5,572	88%	54
Chattogram	70,820	1,590	2.25	1,078	27%	20
Khulna	25,819	476	1.84	90	80%	0
Rajshahi	25,791	561	2.18	124	61.0%	2
Rangpur	16,020	364	2.27	56	124.0%	1
Sylhet	15,916	311	1.95	92	-12%	0
Barishal	10,802	262	2.43	31	0.0%	5
Mymensingh	7,868	196	2.49	22	47%	1
National	557,395	8,545	1.53	7,065	71.7%	83

In the epi-week 10, Dhaka division reported the highest number (5,572) of new cases, **13** new cases per 100,000, a **88% increase**; followed by Chattogram (1,078), **3** new cases per 100,000, an **increase of 27%** than last week. Rangpur division has the highest weekly growth of **124%** (56 this week and 25 in the week before) while Sylhet has a **12% decrease** of weekly new cases (92 and 105 respectively).

The map below is showing new cases of COVID-19, 01 – 14 MAR 2021, Bangladesh

COVID-19 Incident Cases

(Latest 14 Days)

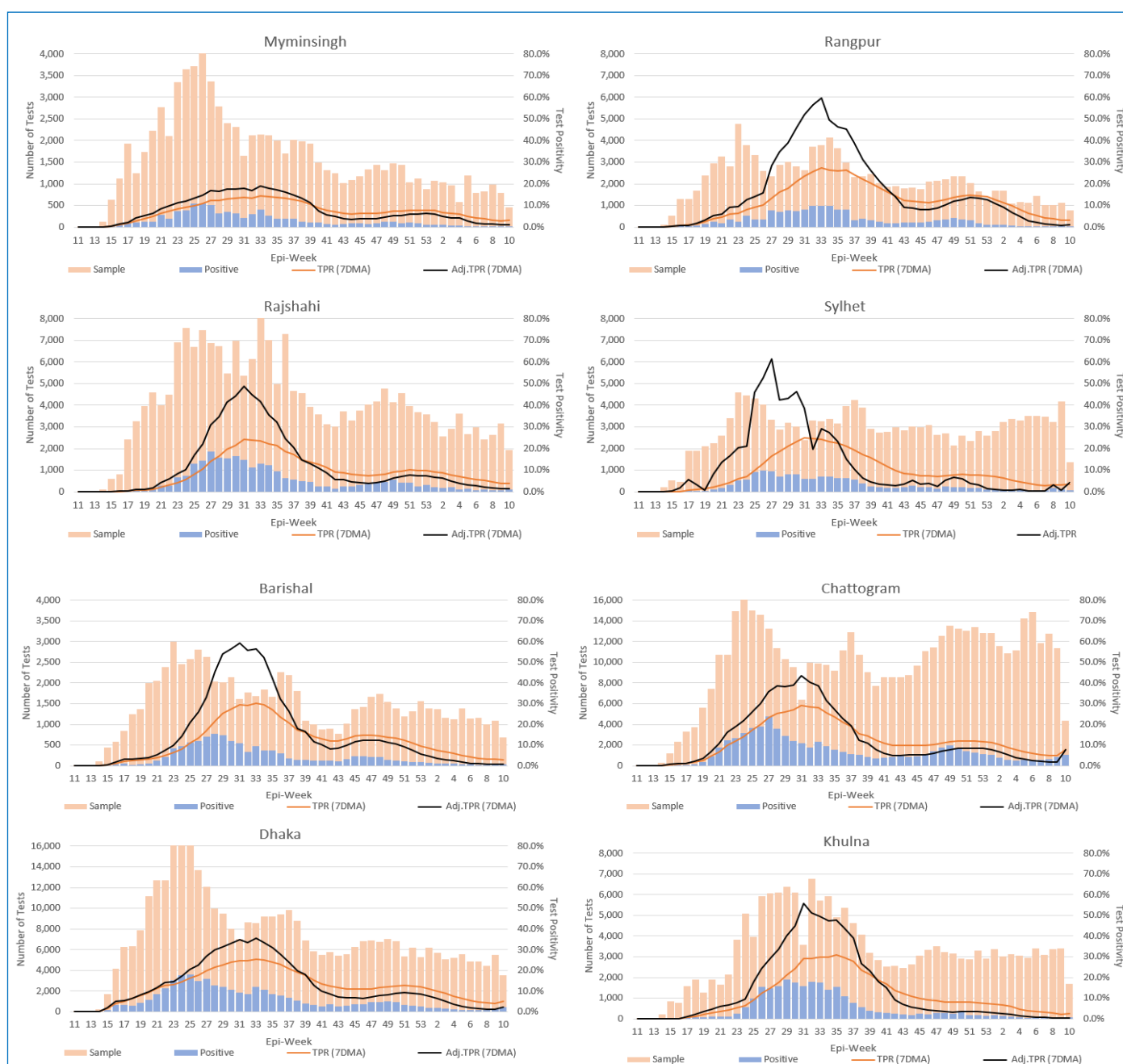


The highest number of weekly cases (**25,481**) reported in the epi-week 26, 2020 (22 – 28 JUN) and the highest daily cases 4,029 recorded on 02 July 2020. The highest weekly death (**314**) recorded on week **27**, 2020 (29 JUN – 05 JUL) with a highest daily death of 64 on 30 June 2020. In the reported week, COVID-19 daily average cases increased to **1,009** from 588 in the week before.

Out of the total **557,395** COVID-19 cases registered as of 14 March 2021, **91.8%** (511,695) **recovered**, **1.53%** (8,545) **died** and **6.67%** (37,155) were **active cases**. In epidemiological week 10, the weekly average number of COVID-19 **active cases** decreased by **5%** than the week before (**37,807** and 39,726 respectively); during the same time, weekly **recovery** increased by **43%** (**8,692** and 6,079 respectively).

As of 14 March 2021, according to the DGHS Press Release **4,264,551** COVID-19 tests (RT-PCR **99.1%**, GeneXpert **0.6%** and Rapid Antigen **0.3%**) were conducted in Bangladesh with an overall positivity rate of 13.07% (**7.15%** in the last 24 hours) by **219** laboratories/test centres. So far, **76.5%** of the samples (3,260,761) have been tested for COVID in government facilities (RT-PCR **51/118**, GeneXpert **27/29** and Rapid Antigen **72/72**). No test facility has been added to the network of COVID-19 testing facilities since last week. As of the reporting date, the test per case is **7.65**, which indicates the number of tests required to identify 1 case.

The figure below shows Tests and Test Positivity Rate by Division, 08 MAR 2020 – 14 MAR 2021, Bangladesh



4. Points of Entry (PoE) & Quarantine

In the reported week (week 10, 2021), the number of international flights arrived at the designated international airport (HSIA) has **increased** by **5.5%** than the week before (**251** and **238** flights respectively) while the number of incoming passengers has **decreased** by **6.0%** (**34,881** and **37,144** respectively). In the reported week **633** travellers were sent to Institutional Quarantine and **43,449** sent for Home quarantine after passenger screening at the active points of Entry.

The table below is showing distribution of incoming travellers in last 14 days (N=52,694) sent to Home Quarantine as captured through PoE Surveillance, 01 – 14 MAR 2021, Bangladesh

Chattogram Div.	18,449	Dhaka Div.	16,643	Sylhet Div.	5,816	Khulna Div.	4,933
Chattogram	5,687	Dhaka	8,065	Sylhet	2783	Jashore	1120
Cumilla	4230	Munshiganj	1115	Moulvibazar	1375	Khulna	1111
Brahmanbaria	1965	Tangail	953	Sunamganj	869	Bagerhat	621
Noakhali	1959	Narayanganj	922	Habiganj	789	Satkhira	505
Feni	1592	Faridpur	848			Kushtia	420
Chandpur	1412	Narsingdi	829			Jhenaidah	368
Lakshmipur	900	Gazipur	800			Narail	230
Cox's Bazar	597	Madaripur	685			Magura	215
Rangamati	44	Kishoreganj	631			Chuadanga	184
Khagrachhari	40	Shariatpur	568			Meherpur	159
Bandarban	23	Manikganj	528				
		Gopalganj	377				
Rajshahi Div.	2,686	Barishal Div.	1,740	Mymensingh Div.	1052	Rangpur Div.	818
Pabna	588	Barishal	677	Mymensingh	606	Dinajpur	207
Rajshahi	534	Bhola	298	Jamalpur	231	Rangpur	190
Bogura	450	Pirojpur	246	Netrokona	152	Gaibandha	134
Chapai Nawabganj	284	Patuakhali	205	Sherpur	63	Kurigram	81
Naogaon	275	Barguna	158			Nilphamari	73
Natore	239	Jhalokati	156			Thakurgaon	63
Sirajganj	231					Lalmonirhat	47
Joypurhat	85					Panchagarh	23

According to DGHS, as of 14 March 2021, the current institutional quarantine capacity in the country is represented by **629** centres across the 64 districts, which can receive **31,991** persons. A total of **50,028** individuals were placed in quarantine facilities, and **46,705** (93.4%) of them have already been released. Over the same period, a total of **101,408** individuals were isolated in designated health facilities, and **91,742** (90.5%) of them were released.

5. Case Management and Infection Prevention & Control

According to DGHS, as of 14 March 2021, there are **10,303** general beds in the country dedicated for COVID-19 treatment, **31.2%** (3,213) of which are in Dhaka city. Out of total **566** dedicated ICU beds, **49.6%** (281) are in Dhaka city. Presently **19.6%** of the general beds and **45.2%** of ICU beds are occupied across the country.

The table below is showing the bed occupancy in COVID-19 dedicated facilities, week 08 & 10, 2021, Bangladesh

	National			Dhaka		
	14 MAR 2021	28 FEB 2021	Change	14 MAR 2021	28 FEB 2021	Change
General Beds	10,303	10,323	-0.2%	3,213	3,233	-0.62%
Bed Occupancy	19.6%	13.4%	46.3%	47.7%	31.2%	52.9%
ICU	566	582	-2.7%	281	297	-5.39%
ICU Occupancy	45.2%	25.3%	78.7%	61.6%	35.0%	76.0%

6. Vaccination

The Honourable President of the People's Republic of Bangladesh, Mohammad Abdul Hamid receives his first shot of Covid-19 vaccine at his official residence, Bangabhaban, in Dhaka on Wednesday, 10 March 2021. As of 14 March 2021, a total of 4,398,094 people including 2,794,111 (**63.5%**) male and 1,603,983 (**36.5%**) female in the country have received their first dose of the COVID-19 vaccine since the beginning of vaccination.

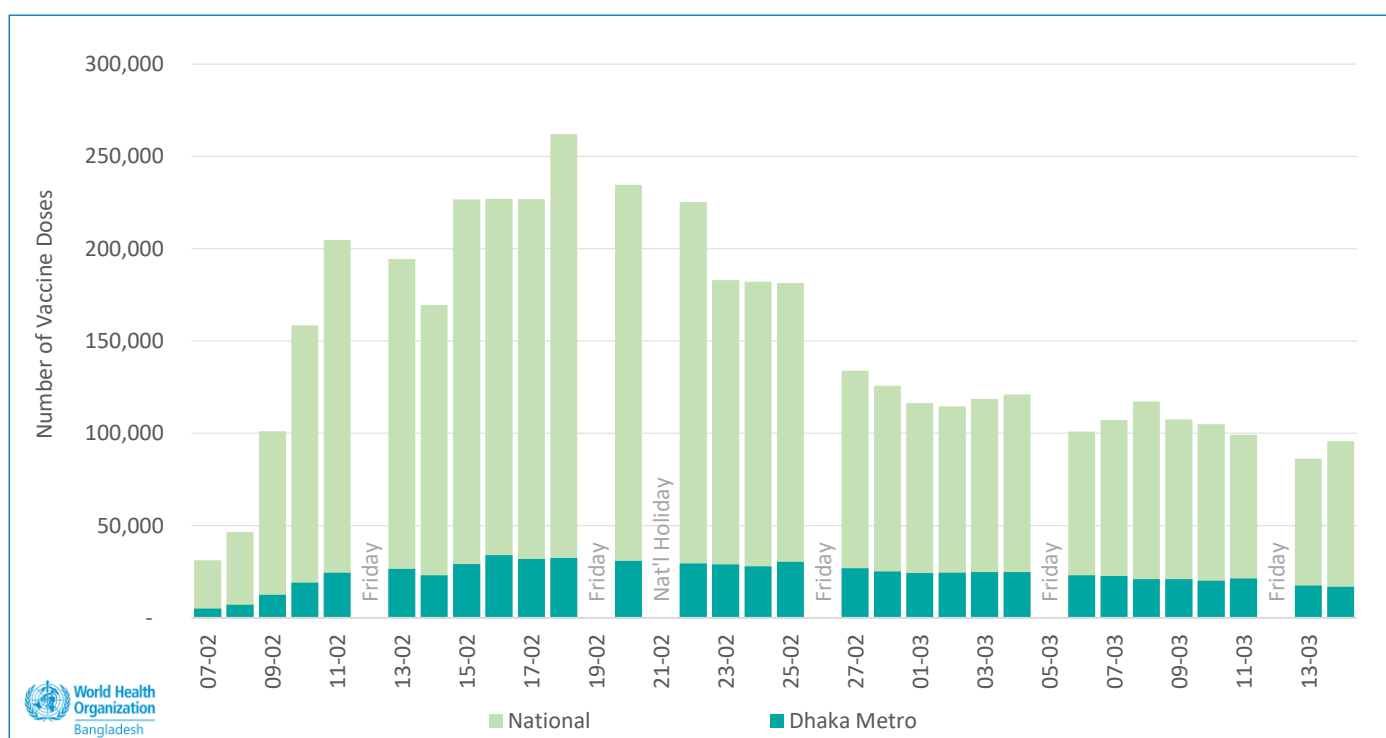
So far, 6,000,000 vaccine doses were distributed across the country, out of which **73%** of vaccine doses have been administered.

The table below shows the utilization of COVID-19 Vaccine doses, 27 JAN – 14 MAR 2021, Bangladesh

Division	No. of Vaccine Doses supplied	No. of Vaccine Doses utilized	Utilization Rate (%)*	% of Population vaccinated**
Dhaka Metropolis	741,081	707,511	95%	29.2%
Dhaka***	980,919	686,215	70%	5.5%
Chattogram	1,346,000	910,801	68%	9.3%
Rajshahi	672,000	479,095	71%	7.5%
Rangpur	600,000	411,357	69%	7.6%
Khulna	693,000	576,792	83%	10.7%
Mymensingh	362,000	189,492	52%	5.0%
Sylhet	362,000	241,008	67%	7.1%
Barishal	243,000	195,823	81%	6.8%
National	6,000,000	4,398,094	73%	8.9%

* Wastage rate not considered, **Eligible population >40 years old, *** Dhaka division excluding Dhaka Metropolis

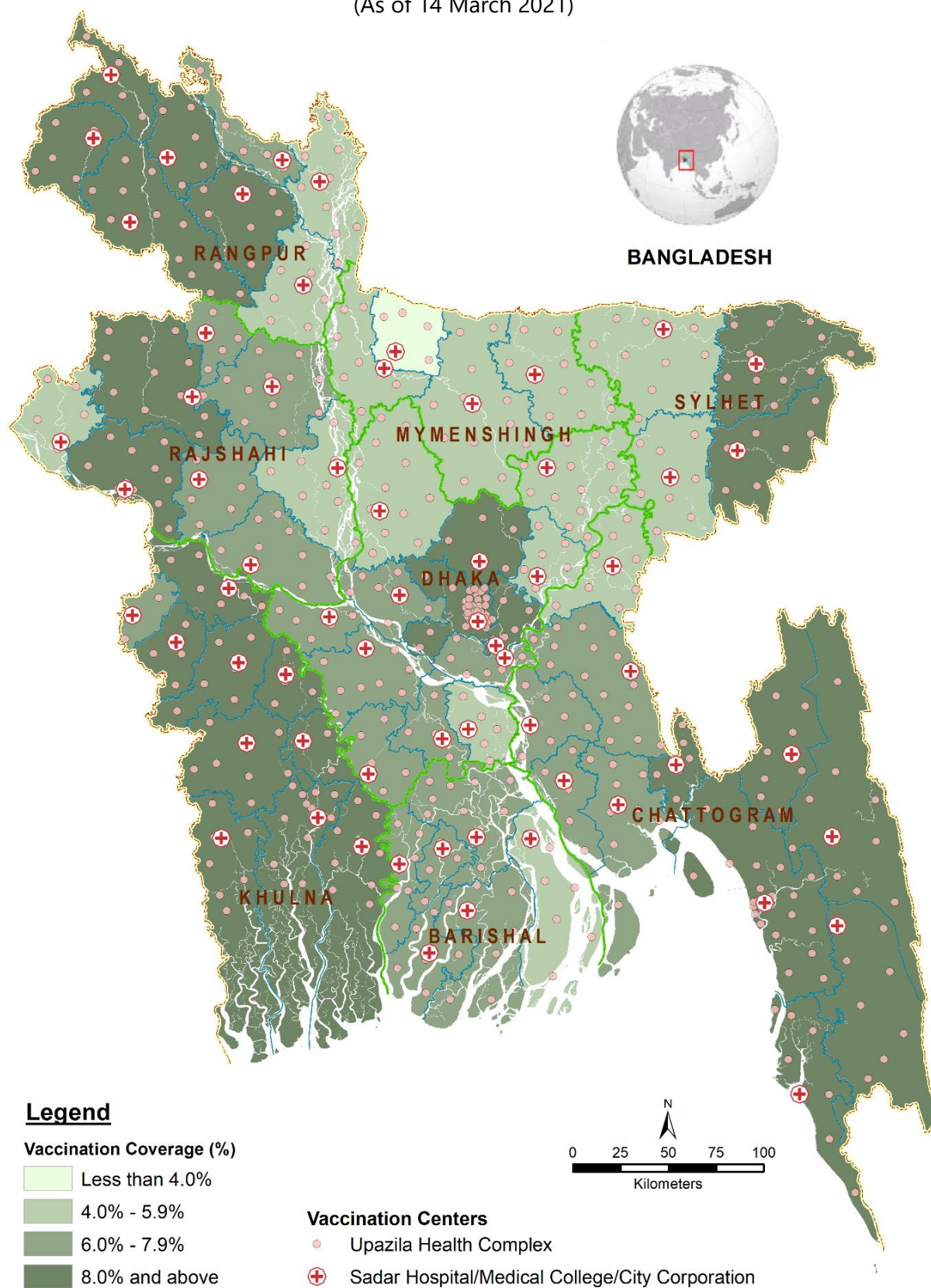
The figure below shows the daily number of COVID-19 vaccine administered, 07 FEB – 14 MAR 2021, Bangladesh



The map below is showing COVID-19 Vaccination coverage, 27 JAN – 14 MAR 2021, Bangladesh

COVID-19 Vaccination Coverage (1st Dose)

(As of 14 March 2021)



7. Useful links for more information

- WHO Bangladesh COVID-19 Situation Reports:
[https://www.who.int/bangladesh/emergencies/coronavirus-disease-\(covid-19\)-update/coronavirus-disease-\(covid-2019\)-bangladesh-situation-reports](https://www.who.int/bangladesh/emergencies/coronavirus-disease-(covid-19)-update/coronavirus-disease-(covid-2019)-bangladesh-situation-reports)
- WHO Cox's Bazar Situation reports:
<https://ln2.sync.com/dl/f33b85a60/99r3nuhb-zebna3tg-kun4acy3-mvyxqv56>
- COVID-19 Situation in the WHO South-East Asia Region:
<https://experience.arcgis.com/experience/56d2642cb379485ebf78371e744b8c6a>
- WHO global Weekly Epidemiological Update and Weekly Operational Update:
<https://www.who.int/emergencies/diseases/novel-coronavirus-2019/situation-reports/>
- WHO Bangladesh awareness and risk communication materials in Bengali:
[https://www.who.int/bangladesh/emergencies/coronavirus-disease-\(covid-19\)-update](https://www.who.int/bangladesh/emergencies/coronavirus-disease-(covid-19)-update)
- COVID-19 WHO Online Training modules: <https://www.who.int/emergencies/diseases/novel-coronavirus-2019/training/online-training>
- COVID-19 updates from the Directorate General of Health Services, Ministry of Health and Family Welfare, Government of The People's Republic of Bangladesh:
<https://dghs.gov.bd/index.php/en/component/content/article?id=5393>
- Institute of Epidemiology, Disease Control and Research (IEDCR):
<https://iedcr.gov.bd/covid-19/covid-19-general-information>