


















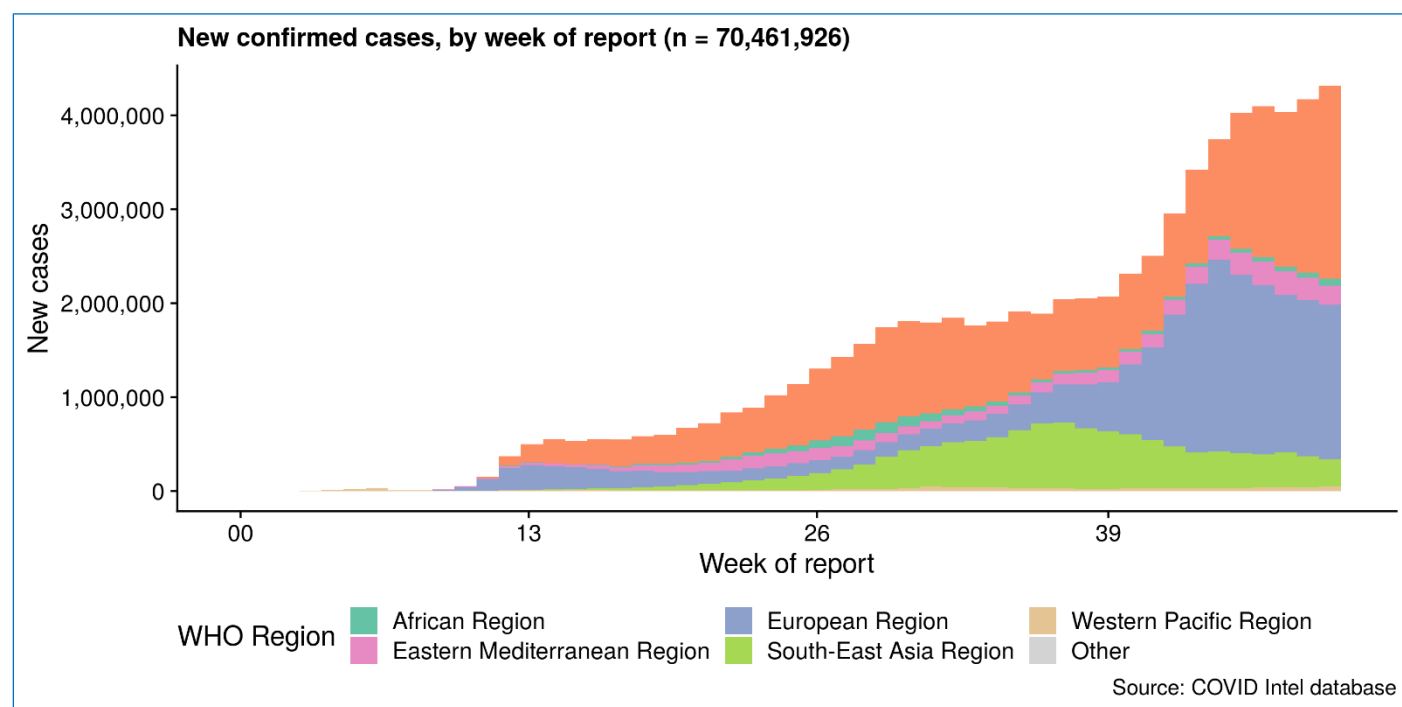
Tested	Confirmed Cases	Recovered	Death	Hotline
 2,969,630	 490,533	 420,896	 7,045	 23.15 million
Test/100,000/Week	Case/100,000/Week	Recovery Rate	CFR%	AR/100,000
62.5	7.6	85.8%	1.44	288
Laboratories		PPE Stock	PoE Screening	
RT PCR Lab : 112 GeneXpert Lab : 18		 884,573		853,139
Last 7 days 106,461 Samples		 5,971,720		55,016
 62.2% PCR Tests Inside Dhaka		 202,148		7,029
 16.5% Overall Positivity		 1,741,320		419,466

Date Source: Directorate General of Health Services, MoHFW, Bangladesh

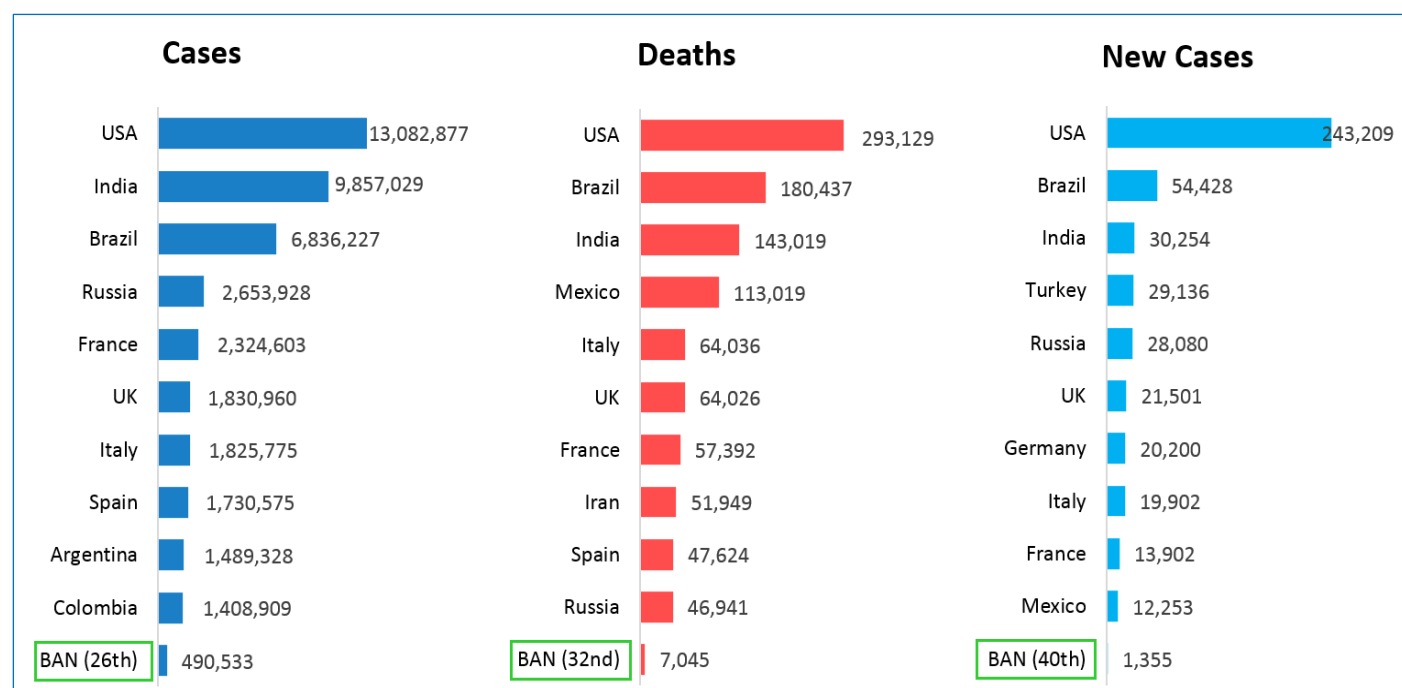
1. Global Situation

Globally, as of 9:58pm, 13 December 2020, there have been 70,461,926 confirmed cases of COVID-19, including 1,599,704 deaths, reported to WHO by the national authorities. USA, the world's worst hit country, has counted **15,648,098** (243,209) cases with **293,129** (2,996) deaths as reported to WHO; followed by India with **9,857,029** (30,254) cases; while Brazil reported the third highest cases of **6,836,227** (54,428) and second highest deaths **180,437** (672) followed by India **143,019** (391) at the same cut off time.

The figure below is showing trend of the weekly number of reported COVID-19 cases by WHO region, 01 January – 13 December 2020



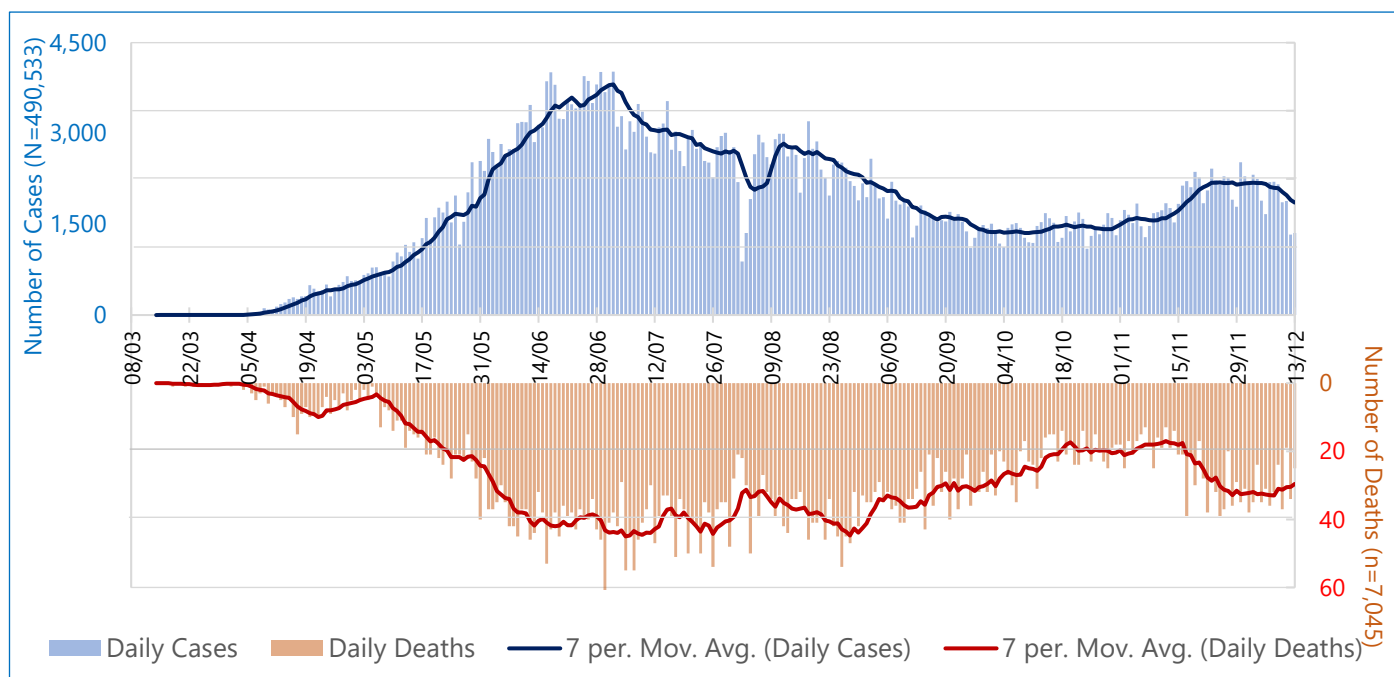
The figure below shows top ranked countries for total cases of confirmed COVID-19, deaths and new cases, 01 January – 13 December 2020



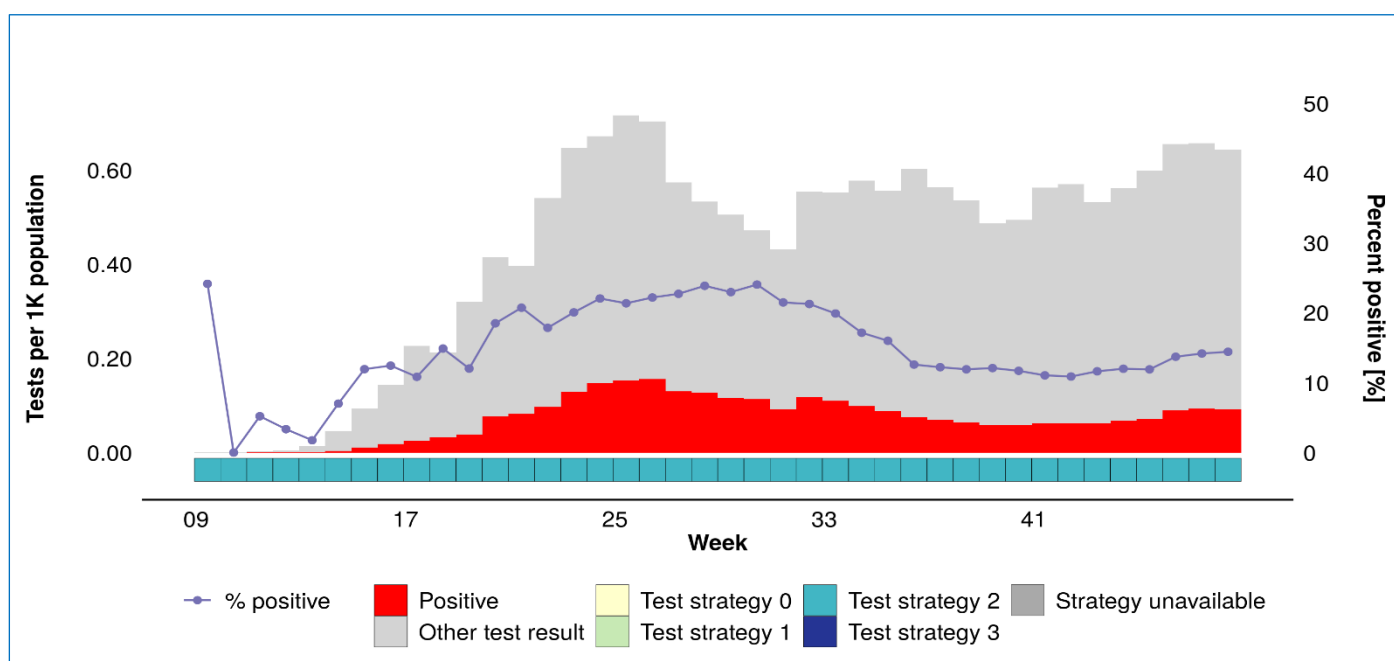
2. Bangladesh Situation

Between 8 March and 13 December 2020, according to the DGHS Press Release <<https://corona.gov.bd/press-release>> there were four hundred ninety thousand five hundred thirty-three (**490,533**) COVID-19 confirmed by rRT-PCR, GeneXpert and Antigen tests including seven thousand forty-five (**7,045**) related deaths (**CFR 1.44%**). Bangladesh is the top 26th country in the world and accounts for **0.7%** of the COVID-19 disease burden in the world.

The figure below is showing the trend of COVID-19 cases and deaths, 08 March – 13 December 2020, Bangladesh



The figure below is showing the weekly test status and positivity of COVID-19, 08 March – 13 December 2020, Bangladesh



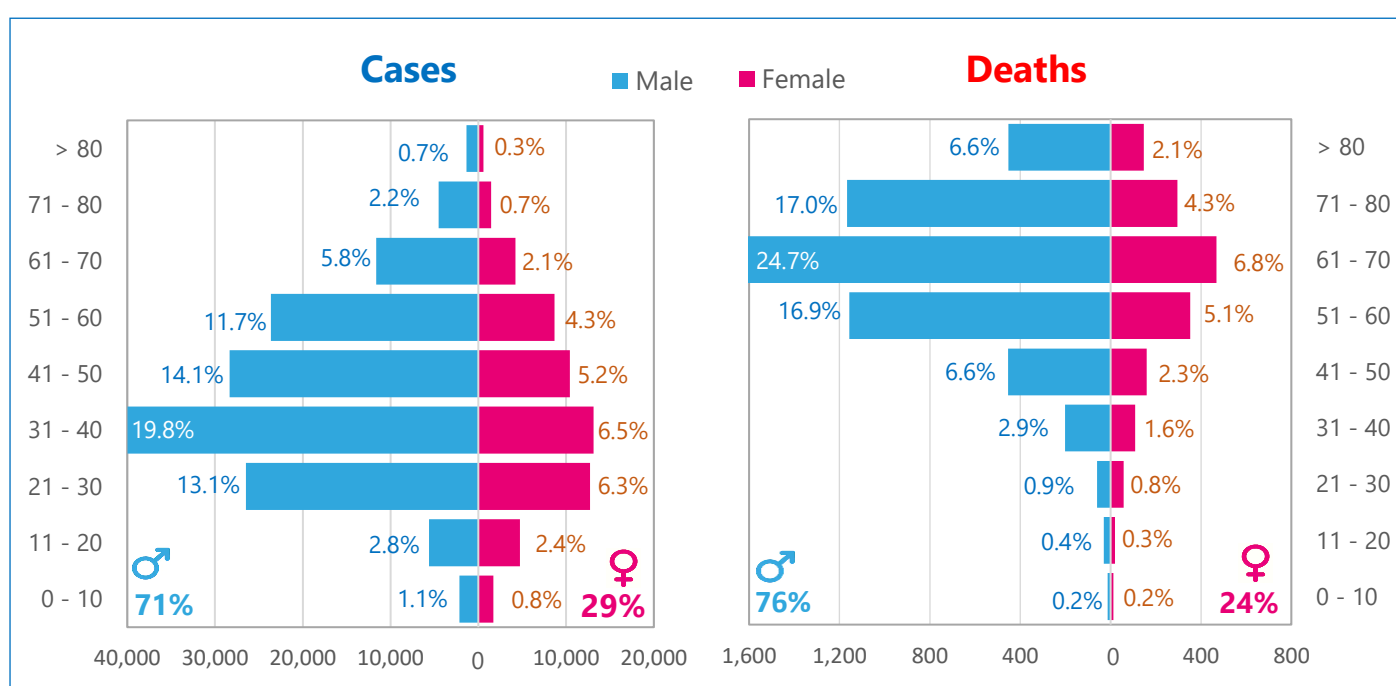
In the epidemiological week 50, number of new cases in Bangladesh is **12,988**; case per 100,000 population per week is **8.9**. New death is **207**; death per 100,000 per week is **0.12**. Weekly new test is **106,461**; tests per 100,000 per week is **62.5**; weekly test positivity is **12.2**.

3. Surveillance & Laboratory

In the reported week (epidemiological week 50), in comparison to the previous epidemiological week, the number of new weekly COVID-19 cases **decreased** by **14.2%** (12,988 in week 50 and 15,138 in the previous week) while the number of COVID-19 new weekly deaths **decreased** by **9.6%** (207 and 229 respectively); overall Case Fatality Ratio (CFR) **increase** to **1.44** which was static at 1.43 for last three weeks.

As of 13 December 2020, among the reported cases **26.4%** cases were confirmed in people between 31 and 40 years old, **19.5%** - in the age group of 21 to 30, **19.3%** - 41 to 50 years and **16.0%** in the age group between 51 and 60 years old. The highest death rate (**31.6%**) was reported in the age group of 61 to 70 years old, **30.1%** in the older age group of 71 and above and **22.0%** in the age group between 51 and 60 years. Male represented **71%** and **76%** of the of total reported confirmed COVID-19 cases and deaths respectively.

The figure below is showing Age-Sex distribution of COVID-19 case and death, 08 March – 13 December 2020, Bangladesh

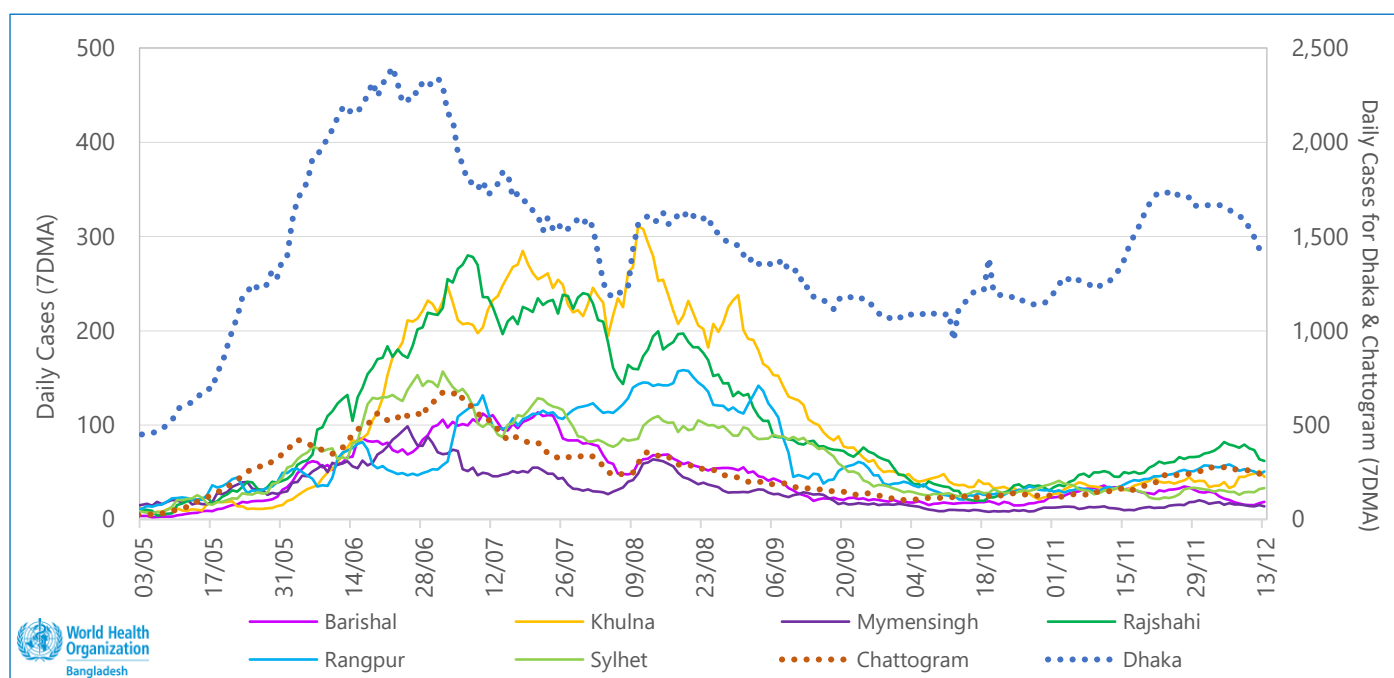


The table below is showing distribution of COVID-19 case and death, 08 March – 13 December 2020, Bangladesh

Division	Cumulative			Week 50		
	Cases	Death	CFR (%)	Cases	Death	CFR (%)
Dhaka	336,088	3,828	1.14	9,766	137	1.40
Chattogram	59,769	1,318	2.21	1,654	33	2.00
Khulna	24,371	506	2.08	319	6	1.88
Rajshahi	23,548	411	1.75	434	5	1.15
Rangpur	14,905	318	2.13	356	7	1.97
Sylhet	14,413	278	1.93	231	7	3.03
Barishal	10,098	234	2.32	131	5	3.82
Mymensingh	7,341	152	2.07	97	7	7.22
National	490,533	7,045	1.44	12,988	207	1.59

As of 13 December 2020, **68.5%** of reported cases were from **Dhaka** division, **12.2%** from **Chattogram**, **Khulna – 5.0%**, **Rajshahi – 4.8%**, **Sylhet – 3.0%**, **Rangpur – 2.9%**, **Barishal – 2.1%** and the lowest **1.5%** from **Mymensingh** division.

The figure below showing the trend of COVID-19 Cases (7DMA), 03 May – 13 December 2020, Bangladesh



While, **54.3%** of the reported death were from **Dhaka** division, **18.7%** from **Chattogram**, **Khulna – 7.2%**, **Rajshahi – 5.8%**, **Sylhet – 4.5%**, **Rangpur – 3.9%**, **Barishal – 3.3%** and the lowest **2.2%** from **Mymensingh** division.

The highest number of weekly cases (**25,481**) reported in epi-week **26** (22 – 28 JUN 2020) while the highest weekly death (**314**) recorded in the following week **27** (29 JUN – 05 JUL 2020). During the last week cases increased in Khulna division by **24.6%**, followed by Sylhet – **13.8%**; while cases reduced in Rajshahi division by **21.9%** followed by Mymensingh – **19.2%**, Dhaka – **15.1%**, Chattogram – **15.0%**, Rangpur – **13.0%** and Barishal – **9.0%** than last week.

As on 13 December 2020, overall attack rate (**AR**) in Bangladesh is **288** per 100,000 population and **100% (64/64)** of districts with the estimated total population of 170,306,468 have reported confirmed COVID-19 cases. In the reported week (week 50), COVID-19 weekly average **AR** (288/100,000) increased by **2.7%** from the previous week.

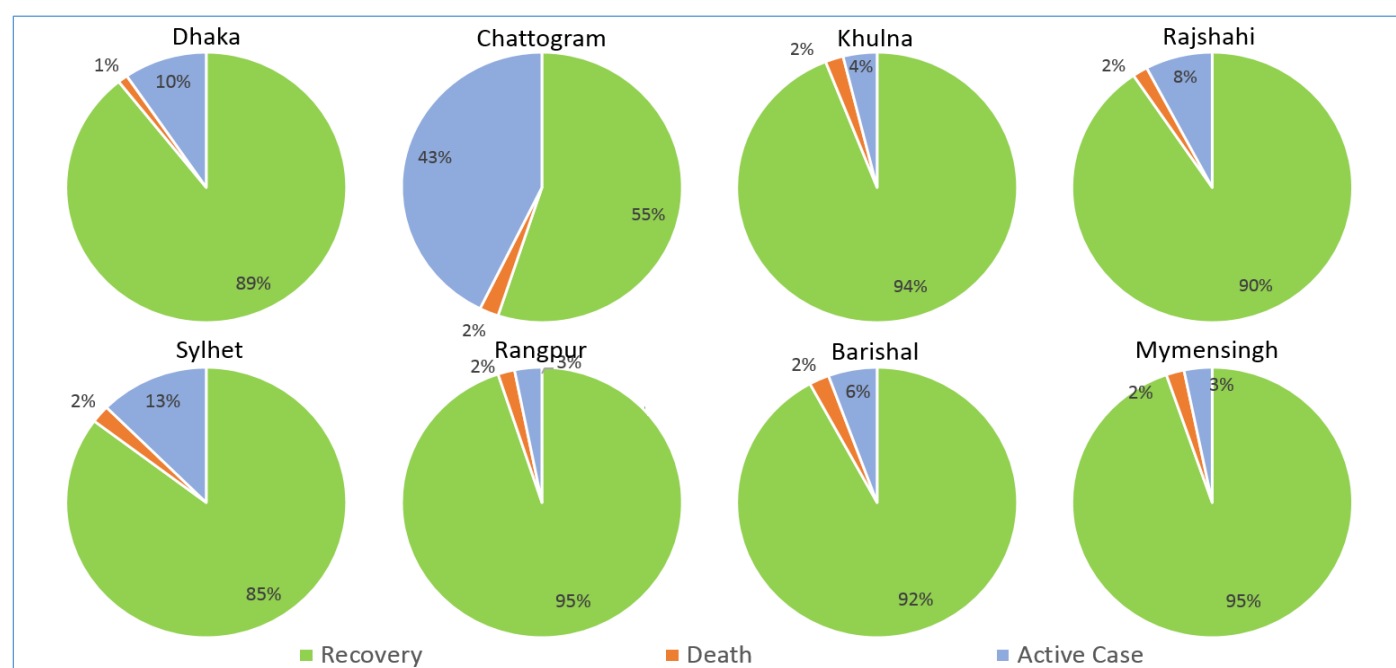
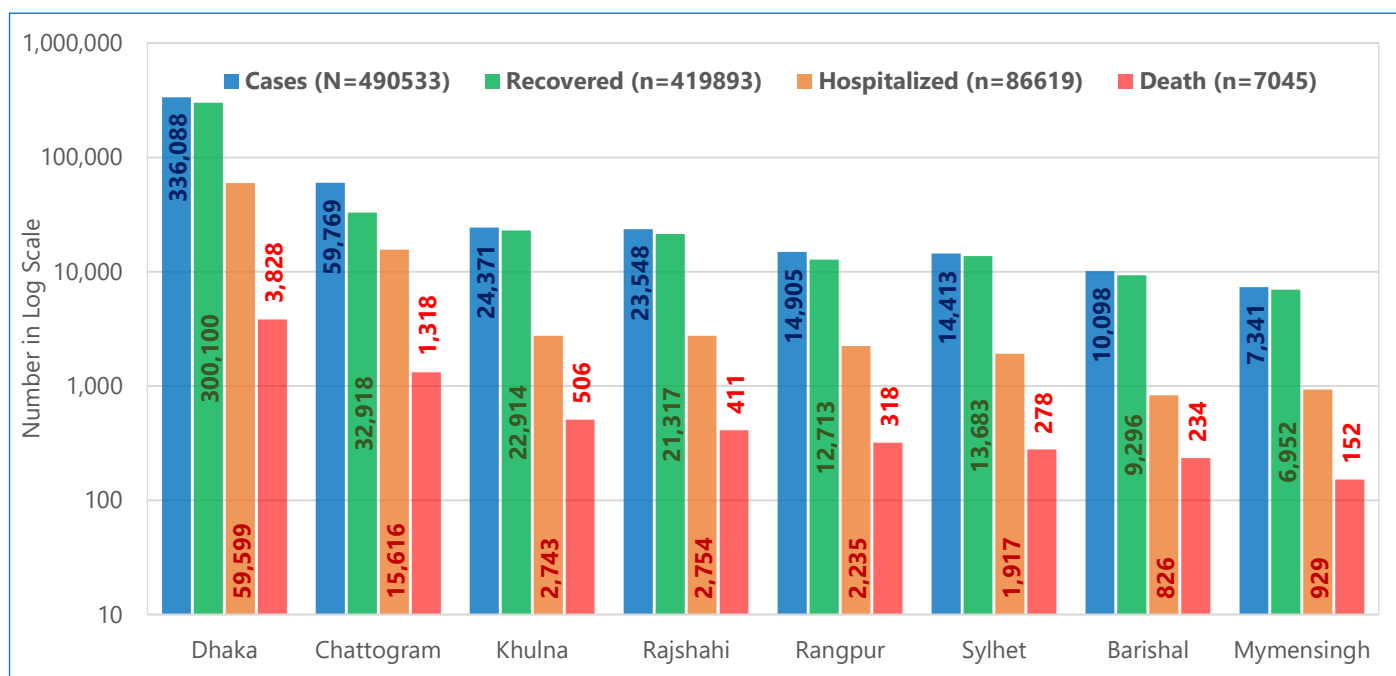
The table below is showing Attack rate per million by District, 08 March – 13 December 2020, Bangladesh

Dhaka Div. 7,799		Chattogram Div. 1,778		Khulna Div. 1,313		Sylhet Div. 1,240	
Dhaka City	33,868	Chattogram	3,055	Khulna	2,516	Sylhet	2,059
Faridpur	3,517	Cox's Bazar	2,066	Narail	1,772	Sunamganj	839
Rajbari	2,690	Bandarban	1,869	Kushtia	1,585	Maulvibazar	802
Munshiganj	2,478	Rangamati	1,550	Jashore	1,387	Habiganj	769
Narayanganj	2,361	Noakhali	1,477	Chuadanga	1,214		
Gopalganj	2,109	Cumilla	1,377	Jhenaidah	1,067		
Gazipur	1,654	Feni	1,281	Magura	956		
Shariatpur	1,351	Lakshmipur	1,118	Meherpur	947		
Madaripur	1,158	Khagrachhari	986	Bagerhat	574		
Dhaka (District)	1,047	Chandpur	904	Satkhira	485		
Manikganj	1,038	Brahmanbaria	815				
Narsingdi	1,027						
Kishoreganj	969						
Tangail	842						

Rajshahi Div.	1,080	Barishal Div.	1,026	Rangpur Div.	799	Mymensingh Div.	566
Bogura	2,294	Barishal	1,676	Dinajpur	1,204	Mymensingh	704
Rajshahi	1,847	Jhalokathi	984	Rangpur	1,122	Jamalpur	649
Joypurhat	1,153	Barguna	954	Thakurgaon	898	Sherpur	329
Sirajganj	677	Patuakhali	904	Lalmonirhat	641	Netrakona	306
Natore	598	Pirojpur	869	Panchagarh	622		
Pabna	513	Bhola	430	Nilphamari	595		
Naogaon	481			Gaibandha	499		
Chapainawabganj	401			Kurigram	403		

Out of the total **490,533** COVID-19 cases registered as of 13 December 2020, **85.8%** (420,896) **recovered**, **1.44%** (7,045) **died** and **12.76%** (62,592) are **active cases**. In the epidemiological week 50, weekly average number of COVID-19 **active cases** decreased by **10.0%**, in comparison to the previous week (**62,592** and 76,445 respectively); during the same time, weekly **recovery** has increased by **40.2%** (**24,936** and 17,788 respectively).

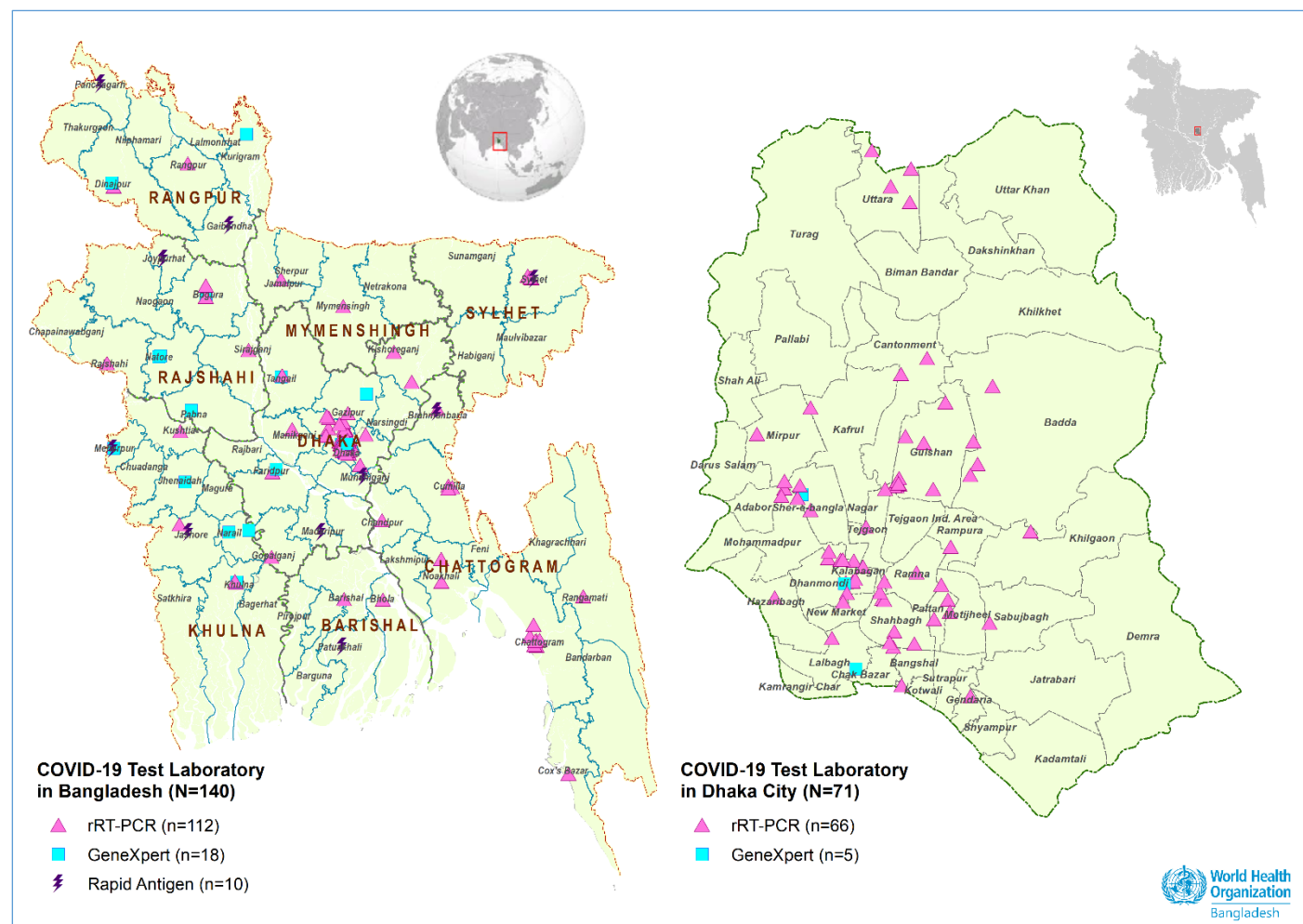
The figures below are showing trend of COVID-19 cases by Outcome, 08 March – 13 December 2020, Bangladesh



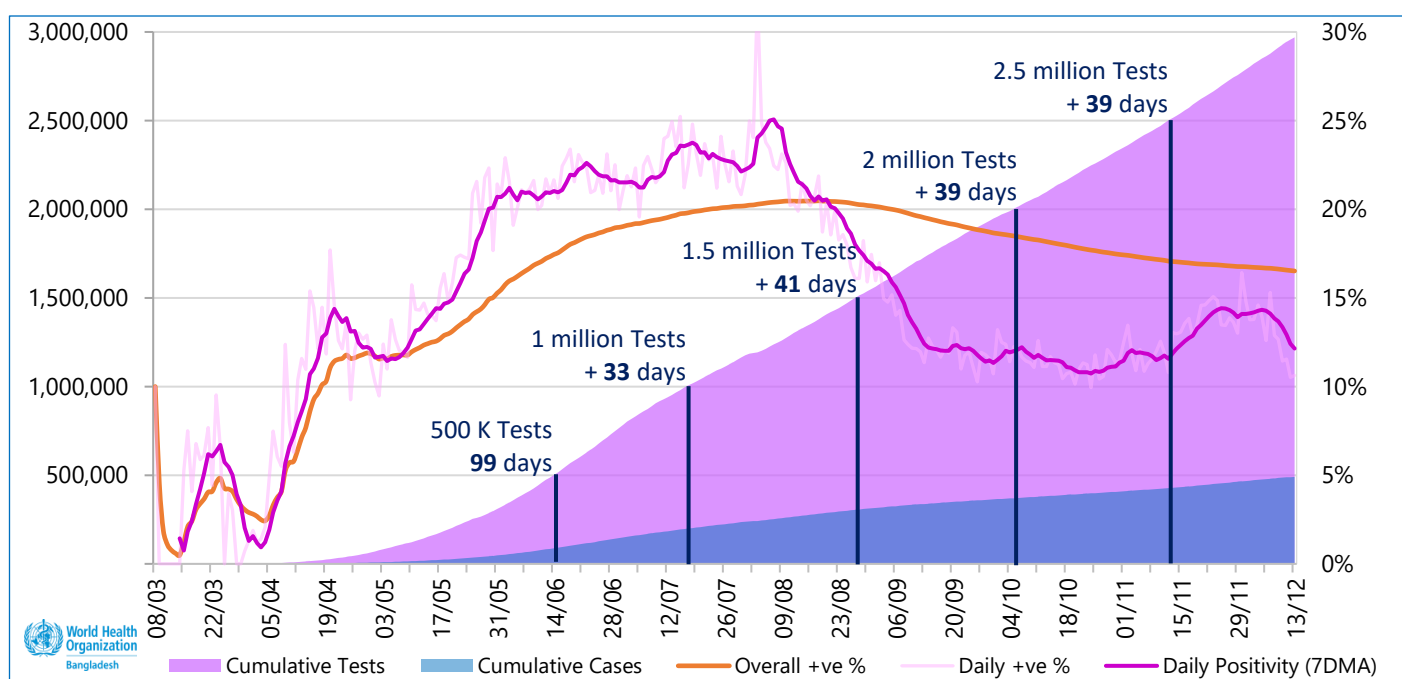
The table below is showing COVID-19 daily Growth Rate by District during 28 Nov – 13 DEC 2020, Bangladesh

		<div><div>0.0%</div><div>0.2%</div><div>0.4%</div><div>0.6%</div><div>0.8%</div><div>1.0%</div></div>																
District		28	29	30	1	2	3	4	5	6	7	8	9	10	11	12	13	
Barishal	Barguna																	
	Barishal																	
	Bhola																	
	Jhalokati																	
	Patuakhali																	
	Pirojpur																	
Chattogram	Bandarban																	
	Brahmanbaria																	
	Chandpur																	
	Chattogram																	
	Cox's Bazar																	
	Cumilla																	
	Feni																	
	Khagrachhari																	
	Lakshmipur																	
	Noakhali																	
Rangamati																		
Dhaka	Dhaka																	
	Dhaka City																	
	Faridpur																	
	Gazipur																	
	Gopalganj																	
	Kishoreganj																	
	Madaripur																	
	Manikganj																	
	Munshiganj																	
	Narayanganj																	
	Narsingdi																	
	Rajbari																	
	Shariatpur																	
	Tangail																	
Khulna	Bagerhat																	
	Chuadanga																	
	Jashore																	
	Jhenaidah																	
	Khulna																	
	Kushtia																	
	Magura																	
	Meherpur																	
	Narail																	
	Satkhira																	
	Mymensingh	Jamalpur																
Mymensingh																		
Netrokona																		
Sherpur																		
Rajshahi	Bogura																	
	Chapai Nawabganj																	
	Joypurhat																	
	Naogaon																	
	Natore																	
	Pabna																	
	Rajshahi																	
	Sirajganj																	
Rangpur	Dinajpur																	
	Gaibandha																	
	Kurigram																	
	Lalmonirhat																	
	Nilphamari																	
	Panchagarh																	
	Rangpur																	
	Thakurgaon																	
Sylhet	Habiganj																	
	Moulvibazar																	
	Sunamganj																	
	Sylhet																	

The maps below showing distribution of COVID-19 test laboratories cumulative, 13 December 2020, Bangladesh



The graph below is showing cumulative number of Samples tested and Positivity rate, 08 March – 13 December 2020, Bangladesh



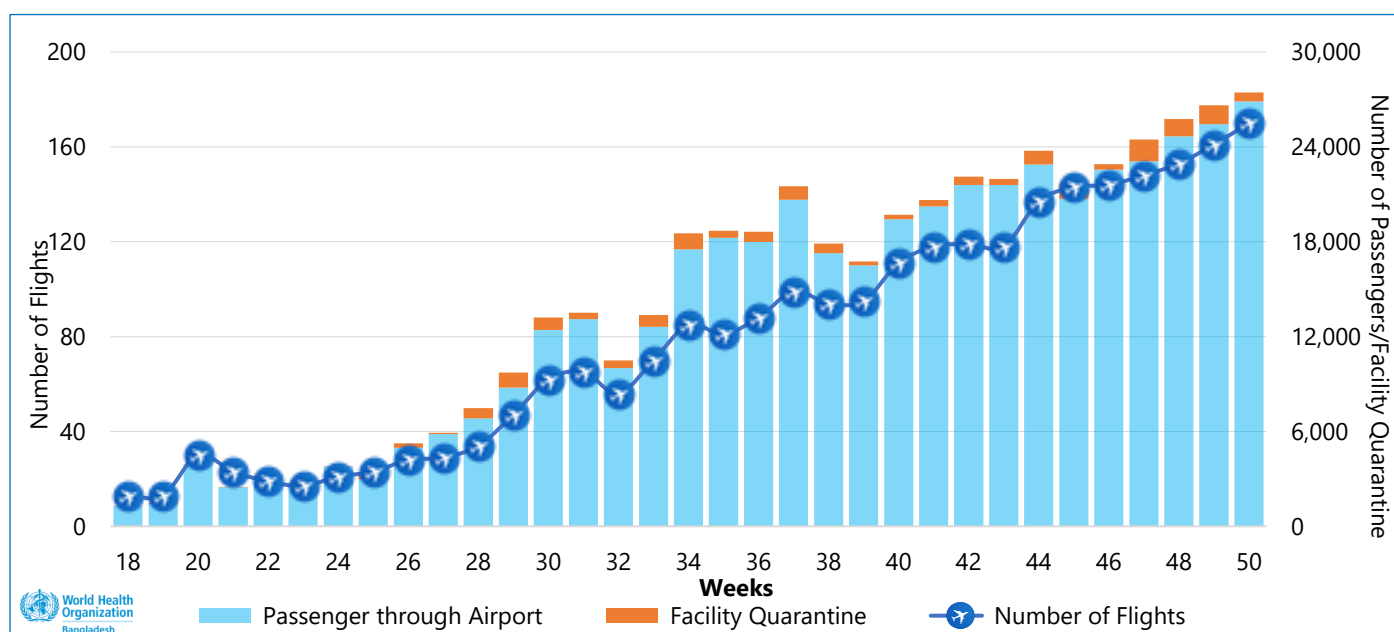
As of 06 December 2020, according to the DGHS Press Release **2,969,630** COVID-19 tests were conducted in Bangladesh with the overall positivity rate of **16.5%** (**10.6%** in last 24 hours) by **140** laboratories. Total **62.0%** (**1,832,380/2,955,887**)

of all samples were tested by the laboratories in Dhaka. As of 13 December 2020, test per case is **6.05** which indicates the number of tests required to identify 1 case.

4. Points of Entry & Quarantine

In the reported week (week 50), the number of international flights has increased by **5.6%**, in comparison to the previous week (**170** and **161** respectively) leading to increase in the number of incoming passengers by **3.0%** (**27,448** and **26,636** respectively). In the reported week **580** individuals were sent to Institutional Quarantine after passenger screening at the Hazrat Shahjalal International Airport (HSIA).

The figure below is showing the incoming flow of flights and passengers captured through PoE Surveillance, 26 April – 13 December 2020, Bangladesh



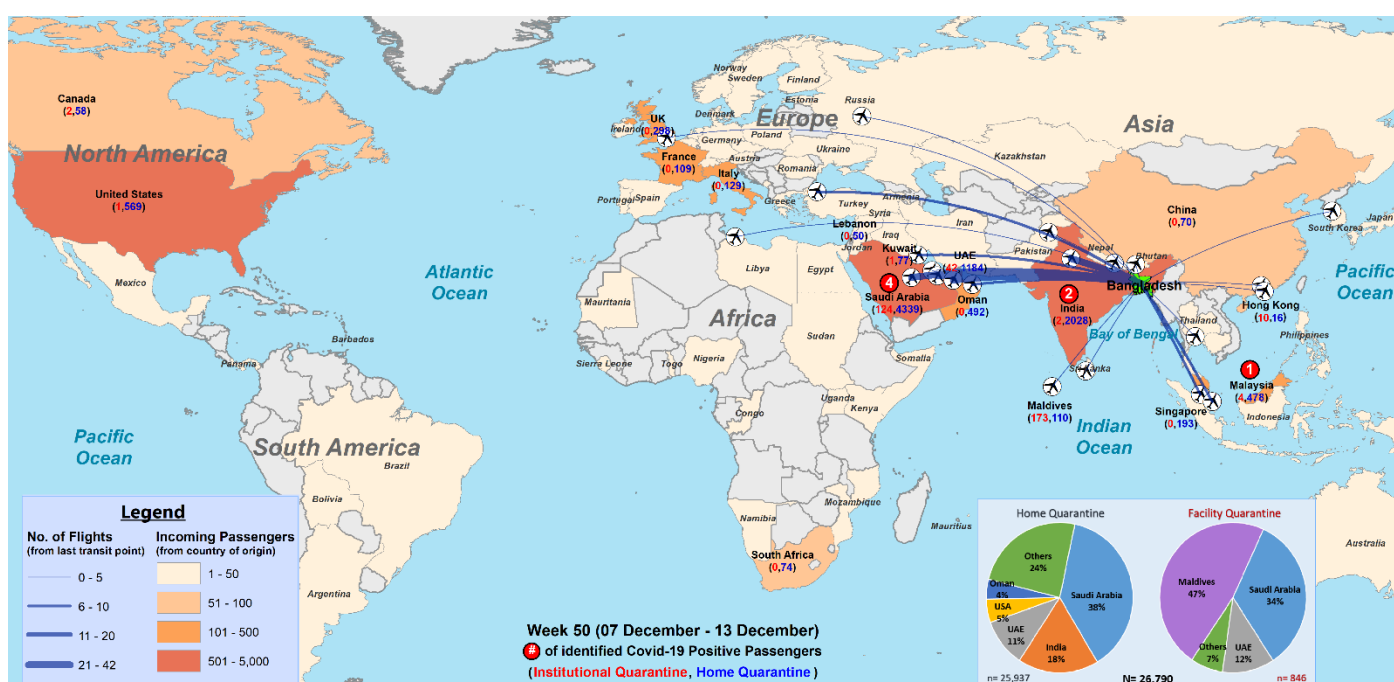
According to DGHS, as of 13 December 2020, the current institutional quarantine capacity in the country is represented by **629** centres across the 64 districts, which can receive **31,991** persons. A total of **43,611** individuals were placed in quarantine facilities and of them **39,695** (91.0%) have already been released. Over the same period, total of **93,837** individuals were isolated in designated health facilities and of them **81,204** (86.5%) have been released.

The table below is showing distribution of incoming travellers in last 14 days (N=52,694) sent to Home Quarantine as captured through PoE Surveillance, 30 NOV – 13 DEC 2020, Bangladesh

Chattogram Div.	13,288	Dhaka Div.	12,396	Sylhet Div.	2,926	Khulna Div.	2,701
Cumilla	3,853	Dhaka	5,372	Sylhet	1,386	Jashore	527
Chattogram	2,465	Tangail	1,007	Moulvibazar	618	Khulna	500
Brahmanbaria	1,859	Munshiganj	815	Habiganj	553	Bagerhat	370
Noakhali	1,407	Narayanganj	725	Sunamganj	369	Kushtia	294
Chandpur	1,305	Gazipur	694			Satkhira	229
Feni	931	Narsingdi	689			Jhenaidah	211
Lakshmipur	832	Faridpur	662			Meherpur	156
Cox's Bazar	591	Kishoreganj	591			Chuadanga	150
Khagrachhari	29	Manikganj	530			Narail	149
Rangamati	11	Madaripur	447			Magura	115
Bandarban	5	Shariatpur	441				
		Gopalganj	225				
		Rajbari	198				

Rajshahi Div.	1,709	Barishal Div.	1,216	Mymensingh Div.	881	Rangpur Div.	519
Pabna	369	Barishal	449	Mymensingh	518	Rangpur	135
Bogura	345	Bhola	219	Jamalpur	211	Gaibandha	114
Rajshahi	281	Pirojpur	186	Netrokona	102	Dinajpur	104
Sirajganj	192	Barguna	145	Sherpur	50	Nilphamari	52
Naogaon	176	Jhalokati	110			Thakurgaon	43
Chapai Nawabganj	174	Patuakhali	107			Kurigram	41
Natore	107					Lalmonirhat	17
Joypurhat	65					Panchagarh	13

The map below is showing geographical distribution of incoming flights and travellers captured through PoE Surveillance, week 50 (30 NOV – 13 DEC), 2020, Bangladesh



5. Case Management and Infection Prevention & Control

According to DGHS, as of 30 November 2020, there are **10,492** general beds in the country of which **31.1%** (3,260) in Dhaka city and **570** ICU of which **50.5%** (288) in Dhaka city dedicated for COVID-19 treatment. Presently **27.8%** of the general beds and **58.4%** ICU beds are occupied all over the country.

The table below is showing a temporal comparison of COVID-19 dedicated facilities, week 48 and week 50, 2020, Bangladesh

	National			Dhaka		
	13 DEC 2020	29 NOV 2020	Trend	13 DEC 2020	29 NOV 2020	Trend
General Beds	10,492	11,338	↓	3,260	3,404	↓
Bed Occupancy	27.8%	26.1%	↑	63.8%	64.8%	↓
ICU	570	547	↑	288	397	↓
ICU Occupancy	58.4%	56.5%	↑	81.8%	72.4%	↑
Oxygen cylinder	13,183	13,625	↓			
High flow nasal cannula	667	604	↑			
Oxygen concentrator	613	399	↑			

6. Useful links for more information

- WHO Bangladesh COVID-19 Situation Reports:
[https://www.who.int/bangladesh/emergencies/coronavirus-disease-\(COVID-19\)-update/coronavirus-disease-\(covid-2019\)-bangladesh-situation-reports](https://www.who.int/bangladesh/emergencies/coronavirus-disease-(COVID-19)-update/coronavirus-disease-(covid-2019)-bangladesh-situation-reports)
- WHO Cox's Bazar Situation reports:
<https://www.who.int/bangladesh/emergencies/Rohingyacrisis/bulletin-and-reports>
- COVID-19 Situation in the WHO South-East Asia Region:
<https://experience.arcgis.com/experience/56d2642cb379485ebf78371e744b8c6a>
- WHO global Weekly Epidemiological Update and Weekly Operational Update:
<https://www.who.int/emergencies/diseases/novel-coronavirus-2019/situation-reports>
- WHO Bangladesh awareness and risk communication materials in Bengali:
[https://www.who.int/bangladesh/emergencies/coronavirus-disease-\(COVID-19\)-update](https://www.who.int/bangladesh/emergencies/coronavirus-disease-(COVID-19)-update)
- COVID-19 WHO Online Training modules: <https://openwho.org/channels/COVID-19>
- COVID-19 updates from the Directorate General of Health Services, Ministry of Health and Family Welfare, Government of The People's Republic of Bangladesh:
<https://dghs.gov.bd/index.php/en/component/content/article?id=5393>
- Institute of Epidemiology, Disease Control and Research (IEDCR):
<https://iedcr.gov.bd/COVID-19/COVID-19-situation-updates>