

Attention patients and visitors

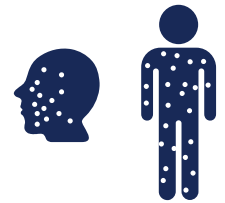
Always wash your hands when you are entering the health-care facility

Please inform staff if you have:

1

Unexplained **rash or lesions** on your face or body.

If yes, wash your hands, wear a mask and inform clinic staff right away.



2

New or worsening **diarrhoea** in the past 24 hours.

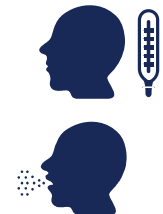
If yes, wash your hands and inform clinic staff if you have immediate need for toileting.



3

New or worsening **cough, shortness of breath, or runny nose/sneezing** AND **fever** or **chills** in the past 24 hours.

If yes, wash your hands and wear a mask or request a mask from clinic staff.



4

Answered "yes" to any of the above AND you have **travelled** in the last 21 days, OR you have been with a **sick person who has travelled** in the last 21 days.

If yes, wash your hands and inform clinic staff right away.

