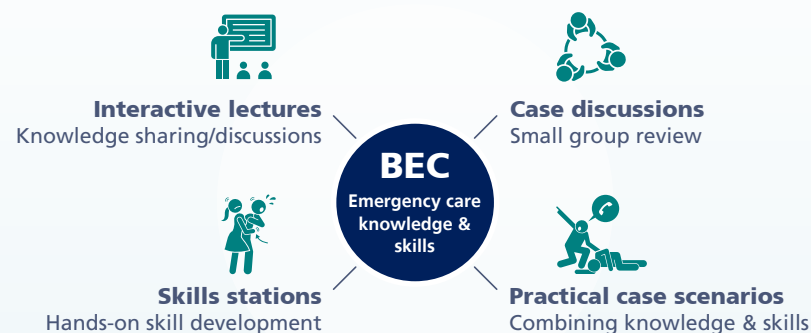


Teaching methods

This course uses the following main teaching strategies:



Implementation

The BEC package is designed to support the efforts of governments, educational institutions, professional societies, and others to train emergency care providers to act within their designated scope of practice.

Sponsoring organizations such as national professional societies, Ministry of Health designees, hospitals, universities, and non-governmental organizations should register the BEC courses with regional or international professional emergency care societies.

More information

Details and course materials may be found at:

<https://bit.ly/who-bec>

Further technical support is available by contacting:

emergencycare@who.int



Cover photo: WHO/Jayne Gershen

BASIC EMERGENCY CARE

Approach to the
acutely ill and injured

A course for
first-contact providers
who manage acute life-
threatening conditions
with limited
resources



ICRC



World Health
Organization



IFEM

Developed by the World Health Organization and the
International Committee of the Red Cross in collaboration with
the International Federation for Emergency Medicine

■ Purpose and scope

A systematic approach to emergency conditions saves lives, even when specialised care is not available.

The Basic Emergency Care (BEC) course specifically addresses the gaps in emergency care in resource-limited settings. It promotes universal health coverage and protection from health emergencies by strengthening health worker capacity to deliver emergency care.

The central aim of the BEC course is to enhance the ability of first-contact health workers to provide quality care using a standardized approach to the recognition and management of emergency conditions.

The course teaches how to:

- assess patients with emergency conditions using a systematic approach
- identify and provide key interventions and treatments
- know when and how to refer for additional care

The BEC course integrates clinical guidance from:

- WHO IMAI District Clinician Manual
- WHO Pocket Book of Hospital Care for Children
- WHO Emergency Triage Assessment and Treatment
- WHO Integrated Management of Pregnancy and Childbirth

■ Course content

The BEC course uses a practical and systematic approach according to the presenting condition of the patient. The course consists of five modules:



BEC extended modules are available to guide care for conflict-related injury.

■ Target audience

The target audience for the course includes all professionally trained first-contact health workers such as nurses, midwives, prehospital providers, mid-level providers, and doctors who are working in prehospital or facility-based settings.

The BEC course has been implemented in over 60 countries in all regions and has been incorporated successfully into pre-service and in-service training.

■ Duration and delivery modes

