

Mpox screening tool for health workers

Characteristic mpox acute skin rash

- Single or multiple lesions in any part the body and/or mucosa that may include oral, conjunctival, urethral, penile, vaginal or anorectal lesions (anorectal lesions can manifest as anorectal inflammation [proctitis], pain and/or bleeding).

Characteristic mpox lesions

- Sequential stages: macules, papules, vesicles, pustules, crusting over and desquamative lesions over a period of 2–3 weeks.
- Typically, all lesions are at same stage and start centrally, extending towards palms of hands and soles of feet.
- Lesions can range from one to a few and, in severe cases, even several thousand.
- Can involve mouth, genitals and eyes.

YES



Enter mpox pathway

- IPC precautions for mpox
- Triage and clinical assessment

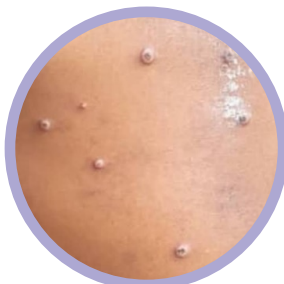
NO



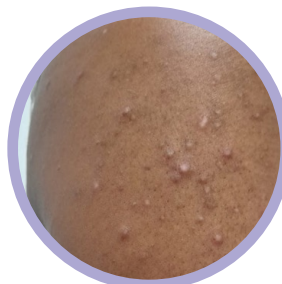
Seek usual care



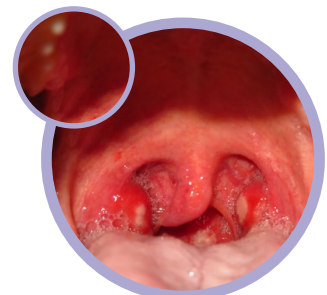
Source: Bichat Claude Bernard Hospital, APHP (France)



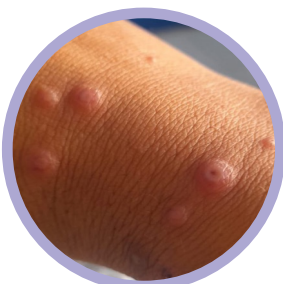
Source: Lagos State University Teaching Hospital (Nigeria)



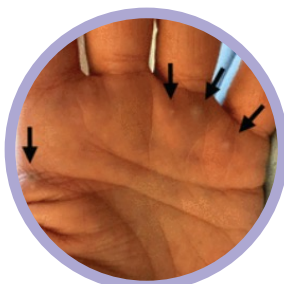
Source: Evandro Chagas National Institute of Infectious Diseases-Fiocruz (Brazil)



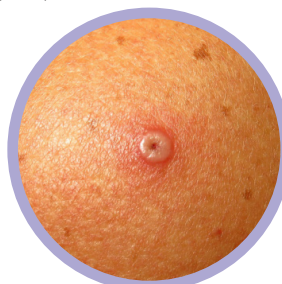
Source: Hospital Clínic de Barcelona (Spain)



Source: Evandro Chagas National Institute of Infectious Diseases-Fiocruz (Brazil)



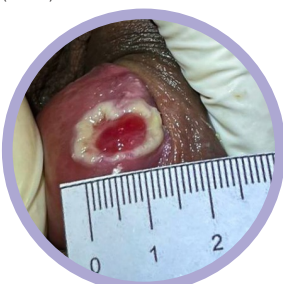
Source: University of Toronto (Canada)



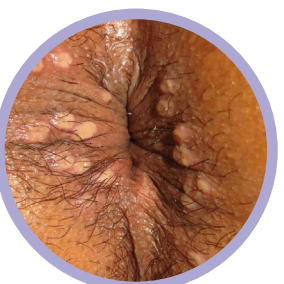
Source: Hospital Clínic de Barcelona (Spain)



Source: WHO photo library



Source: Evandro Chagas National Institute of Infectious Diseases-Fiocruz (Brazil)



Source: Hospital Clínic de Barcelona (Spain)

See *Atlas of mpox lesions: a tool for clinical researchers*, 28 April 2023, version 1.0. Geneva: World Health Organization; 2023 (<https://iris.who.int/handle/10665/366569>).



World Health Organization