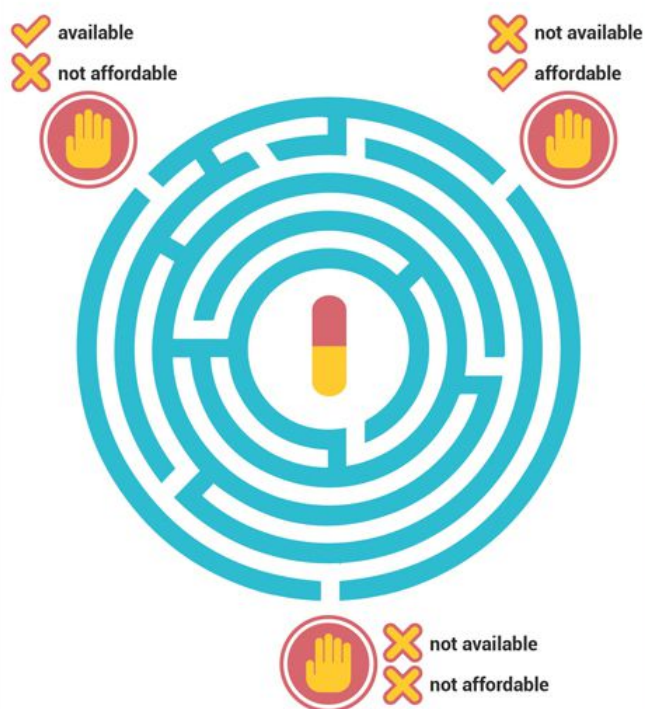


MEASURING ACCESS TO HEALTH PRODUCTS

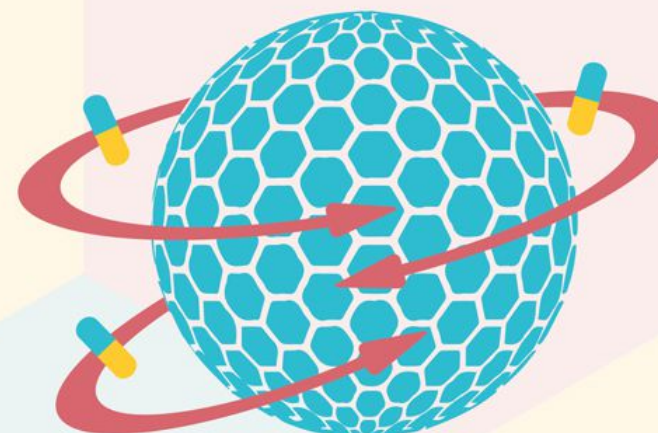
Everyone should be able to access quality, effective, safe and affordable medicines and health products to lead a healthy and productive life. This concept is central to the vision of Universal Health Coverage. Measuring and monitoring the access to health products, such as essential medicines, diagnostics, assistive technologies, and vaccines, is critical to the delivery of quality health services, and is an integral part of ensuring health for all. Access to medicines and health products is determined by many variables, including their availability and affordability.

Countries need timely and accurate information on availability and affordability of medicines and health products to inform policy. Collecting and analysing data about the availability of medicines and health products in healthcare facilities, including pharmacies and central warehouses, and their prices, is crucial to the discussion on access.



NO ACCESS

Medicines and health products are accessible when they are both available and affordable



INNOVATION FOR INFORMATION

Monitoring access to essential medicines and health products is critical to



MedMon

Collect routine medicines and health products data, quickly and cost-effectively with a single app.

With the WHO-EMP Medicine Monitoring App (MedMon) and its platform for data analysis and visualization, WHO offers an easy-to-use, flexible, adaptable, cheap and effective data collection and analysis tool for countries to understand which medicines are available in the areas most in need and how much patients are paying for them.

- MedMon routinely monitors medicines' prices and availability in a sustainable, cost-effective, and timely manner, regardless of the users' access to internet or cellular data.

- It is designed to avoid duplication of efforts and potential manual entry errors which can occur using traditional paper-based data collection methods.



WHO MedMon App

MEASURING PRICE AND AVAILABILITY OF HEALTH PRODUCTS

INNOVATION LEADS THE WAY

- **Customizable** for any country's needs
- Collect data **online or offline**
- Compatible with Android, iOS, Windows, Linux, and Mac
- Support **GPS, photo, and barcode capture**
- Supports inclusion of national product registries for **rapid data collection** and analysis
- Download submitted data **immediately** for validation and analysis
- Connect to WHO MedMon's PowerBI platform for **interactive analytics** and reporting
- Collect routine medicines' data in a **fraction of the time** and at a significantly **lower cost**

PRINCIPLES OF SUSTAINABLE MEDICINES MONITORING

Use what exists

Identify existing routine data collections systems with information on affordability and supply of medicines

System creation

If routine data collections systems are unreliable or non-existent, create a new system

Sustainable action

Monitoring activities should be a regular function of the government, initiated and conducted by a national medicines authority

Seek advice

Gather an advisory committee with an understanding of medicines selection, utilization, pharmacoeconomics, supply chain, policy development and advocacy tools

Quality assurance

Validate collected data quickly and ensure data security to enable long-term availability and analysis of data

Disseminate data

Validated results of monitoring activities should be regularly published to motivate action

WHO is improving access to health products



Assist countries to build their capacity, policies and information to increase access to quality essential medicines and other health products such as diagnostic tools and assistive technologies.



Promote fair and affordable prices and improve mechanisms for financing and for coverage of essential medicines and health products in social protection schemes.

Improve quality and safety of products, through the establishment and implementation of global standards, strengthening regulatory systems, and minimizing the risks from substandard and falsified medicines.

