

---

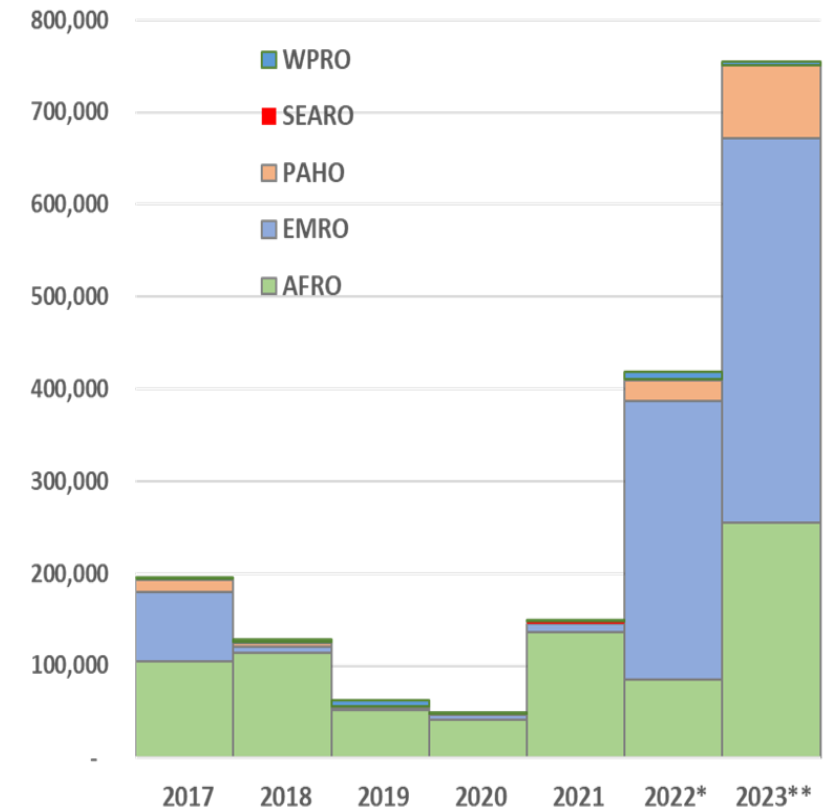
# Global Cholera Situation Update

2 May 2024

# Global Cholera situation worsening each year since 2011

- Grade 3 emergency since January 2023.
- **Unacceptably high case fatality rate (CFR).**
- Increased frequency of larger and prolonged outbreaks.
- Cholera re-emerging in previously clear countries.
- Outbreaks in urban areas with high population density & poor WASH infrastructure.
- Insufficient long-term investments in WASH.
- Climate change intensifying cholera spread in affected regions.
- Acute global shortage of Oral Cholera Vaccines (OCV).

Cholera cases reported to WHO 2017-2022\* (WER) & Preliminary data for 2023 \*\* (Yemen excluded)



\* Source WER (Yemen Excluded) + Haiti data 2022

\*\* Source IMST HQ

# Global Cholera situation

1 January 2023 to 25 April 2024

**846 600** Cases reported since 2023  
(incl. 136 589 cases reported in 2024)

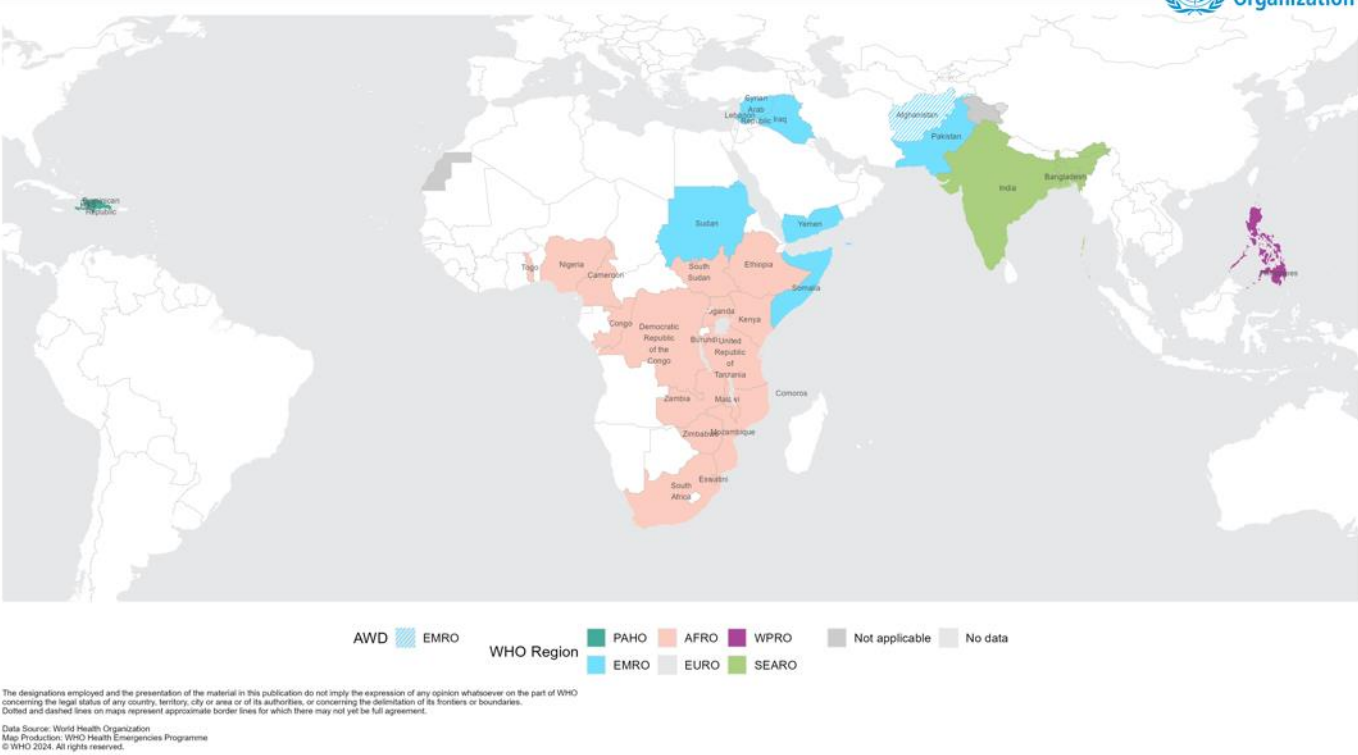
**6 200** Deaths reported since 2023  
(incl. 1689 deaths reported in 2024)

**31** Countries officially reporting cases since 2023  
(incl. 23 countries reporting in 2024)

**8** Countries currently in “Acute Crisis”  
Comoros, DRC, Ethiopia, Haiti, Mozambique, Somalia, Yemen, Zimbabwe

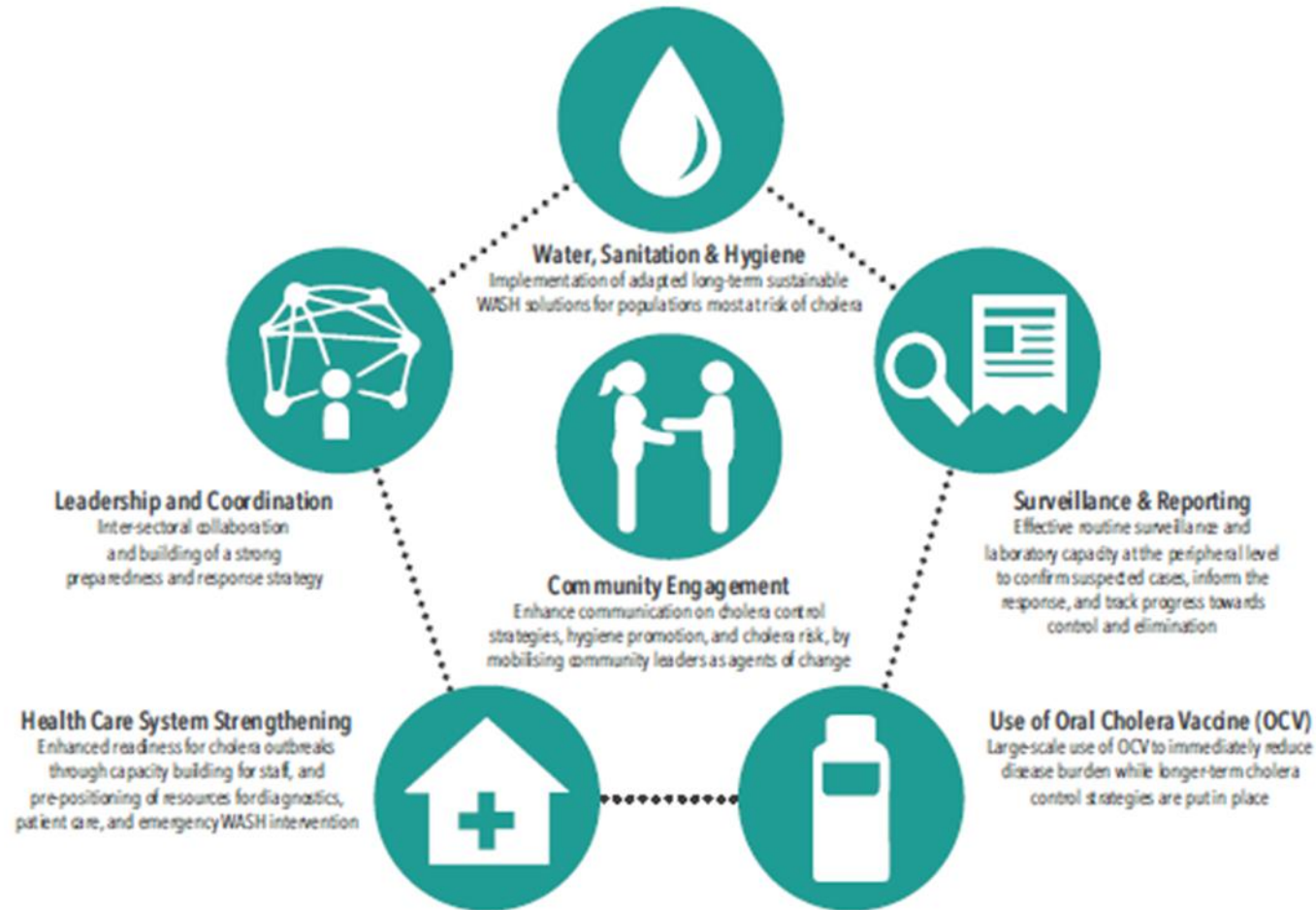
**14** Additional countries with active outbreaks

**Countries which reported cholera / AWD since 2023**  
(as of 25 April 2024)



1. Please note that the data presented here should be interpreted with caution due to potential reporting delays. Such delays may affect the timeliness of reports, and consequently, the presented figures might not accurately represent the current situation.
2. Given the diversity in surveillance systems, case definitions, and laboratory capacities across the reporting countries, the cholera case and death statistics presented here require careful consideration and are not directly comparable among countries.
3. The global case fatality rate (CFR) for cholera warrants a prudent examination as it is heavily influenced by variations in surveillance methodologies.
4. In this document, the term 'cholera cases' encompasses both suspected and confirmed cases, unless otherwise delineated in the context of specific countries.

# Cholera response is multisectoral



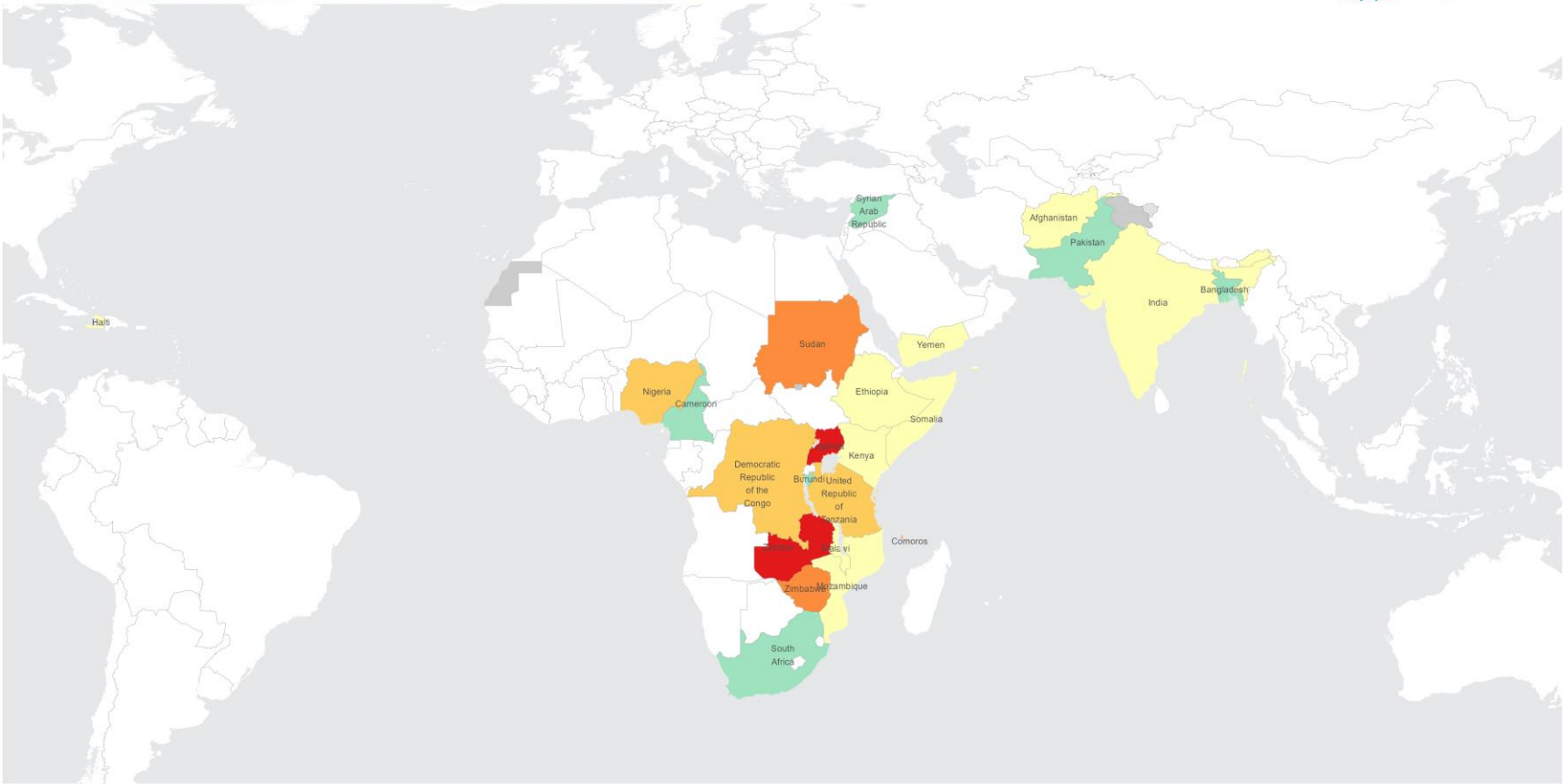
# Global Cholera situation: Key indicators and trends

1 January to 25 April 2024



Country	Cases 2024	Deaths 2024	Cases per 100k	CFR%
Yemen	2363	19	7	0.8
Comoros	2319	55	282	2.4
Burundi	160	0	1	0.0
Malawi	235	1	1	0.4
Ethiopia	11283	114	15	1.0
Afghanistan	30723	14	94	0.0
Somalia	7821	77	48	1.0
Democratic Republic of the Congo	13555	262	11	1.9
Zimbabwe	18062	381	119	2.1
Mozambique	7140	12	25	0.2
United Republic of Tanzania	2527	31	4	1.2
Zambia	19883	633	101	3.2
Sudan	2275	62	5	2.7
Bangladesh	5	0	1	0.0
Cameroon	48	0	0	0.0
Haiti	2672	13	23	0.5
India	505	1	0	0.2
Kenya	313	2	1	0.6
Nigeria	559	7	0	1.3
Pakistan	3472	0	1	0.0
South Africa	11	0	0	0.0
Syrian Arab Republic	9718	0	44	0.0
Uganda	32	1	0	3.1

Cholera associated case fatality ratio (%) reported in 2024



Not applicable No data CFR% No deaths 0.01 - <1 1 - <2 2 - <3 3+

The designations employed and the presentation of the material in this publication do not imply the expression of any opinion whatsoever on the part of WHO concerning the legal status of any country, territory, city or area or of its authorities, or concerning the delimitation of its frontiers or boundaries. Dotted and dashed lines on maps represent approximate border lines for which there may not yet be full agreement.

Data Source: World Health Organization  
Map Production: WHO Health Emergencies Programme  
© WHO 2024. All rights reserved.

---

# Thank you