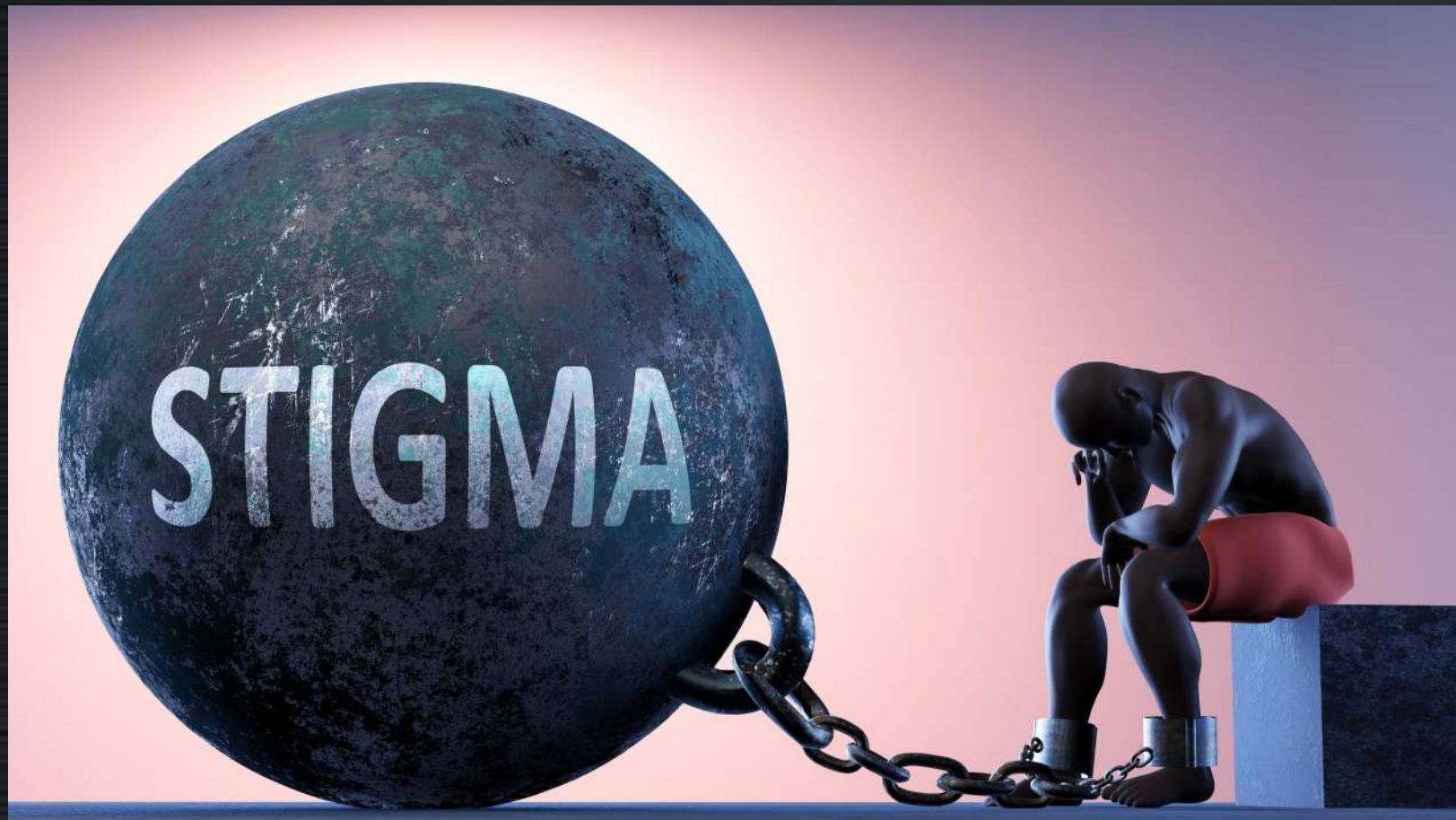


Monkeypox : dealing with stigma

And lessons from HIV and COVID-19 pandemics



Alvaro Furtado Costa

*M.D Infectologist – Specialist,
Center of Reference and Training (CRT)
for STI/AIDS
São Paulo- Brazil*



Stigma in public health

The concept of "stigma" is associated with a negative and derogatory connotation, as a social process that reduces access to health by affected individuals and groups.

- Hurting some communities;*
- Hindered the response;*

É A PIOR E MAIS TERRÍVEL DOENÇA DO
SÉCULO - DOIS BRASILEIROS MORTOS
PESTE-GAY
JÁ APAVORA
SÃO PAULO

*Gay plague already terrifies
São Paulo, 1982*

On this slide we have a newspaper headline already spreading the stigma related to the HIV epidemic

**WOULD
YOU KISS
AN AIDS
VICTIM?**

**AIDS will wipe
out ALL gays by
the year 2000!**

**Gays 'turned away
by scared hospitals'**

Annu Rev Sociol. 2001;27(1):363-85

History of infection diseases stigma and misinformation

feeling
humili
uncomfortable
scorned
society
dishono
disappro
depression
isolat
nervous
em
st

These feelin



face
social
guilt
loneliness
worry
shameful
pressure
blame
lesbian
amed
fault
shunned
tized
remorse
shaming
humiliation
uated
gay

ed by our patients.

Stigma and SKIN

STIGMA : Skin

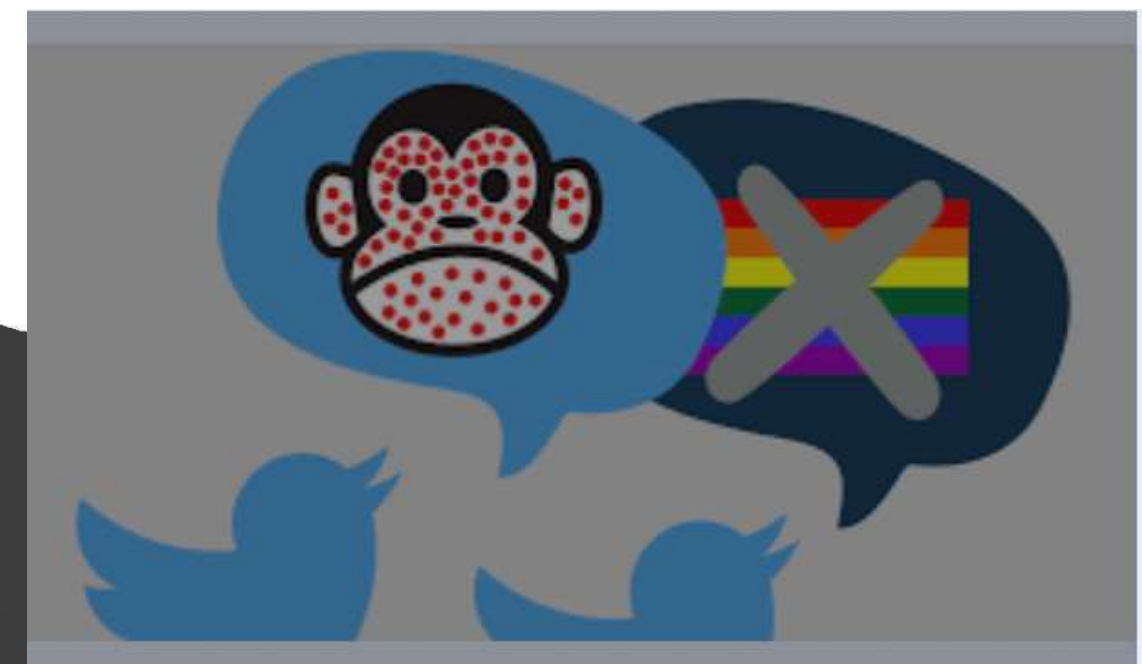


Stigmata, bodily marks or wounds resembling the crucifixion wounds of Christ

80's : HIV , Kaposi sarcoma



Monkeypox 2022



HIV Stigma: *Levels*

Advances, ARV, life expectancy but...



Institutional

LGBTQI+ community: higher levels of stigma due (“intersecting or layered stigma effect”) —the compound effects of stigma

Stigma reduction interventions in people living with HIV to improve health-related quality of life

Galit Zeluf Andersson, Maria Reinius, Lars E Eriksson, Veronica Svedhem, Farhad Mazi Esfahani, Keshab Deuba, Deepa Rao, Goodluck Willey Lyatuu, Danielle Giovenco, Anna Mia Ekström

- **Delay case identification;**
- **Inappropriate advice;**
- **Ignoring disease and not taking appropriate precautions;**
- **Lacking of attention and resources;**
- **Misdirected interventions;**
- **Eroded trust in authorities;**

Fears of scars, pain, stop working for 3 weeks, when returning sexual life, when shots come?

Stigma



Public health reaction

- **Studies have reported on *discrimination* in healthcare environments towards people with HIV**
- **Manifesting as denial of care, confidentiality breaches, negative attitudes,**
- **and humiliating practices by health care workers**
- **HAVE to teach in medical schools and other levels**

J Int AIDS Soc. 2009;12(1):15.
J Gen Intern Med. 2005;20(9):807
UK AIDS Behav. 2008;12(2):255–64.



-SUS : universality, equity , completeness

-2 place in Monkeypox cases world

- > 90% cases in key population ;

Nevertheless

-Brazil: one of the countries that kills the most Gays, Transsexuals/Transpeople;

-Restriction of rights to comprehensive health care to these key populations;

-Distancing from health services, actions and programs, increasing morbidity and mortality



- CRT is a national reference in the treatment of Plw HIV in Brazil;
- Monkeypox cases since June/ 2022 : 400 suspects, 380 confirmed, . 95%MSM, 60 % HIV

- Dedicated area;
- Communication : posters;
- Training all team: disease, biosafety, sample collection, notification;
- Pharmacy: analgesic medications, protocols, antivirals;
- Guide for patients general with orientation

Dealing with stigma in CRT

1-We identified prejudice/stigma/trans/homophobia in the cascade of care
(Open channel/active)

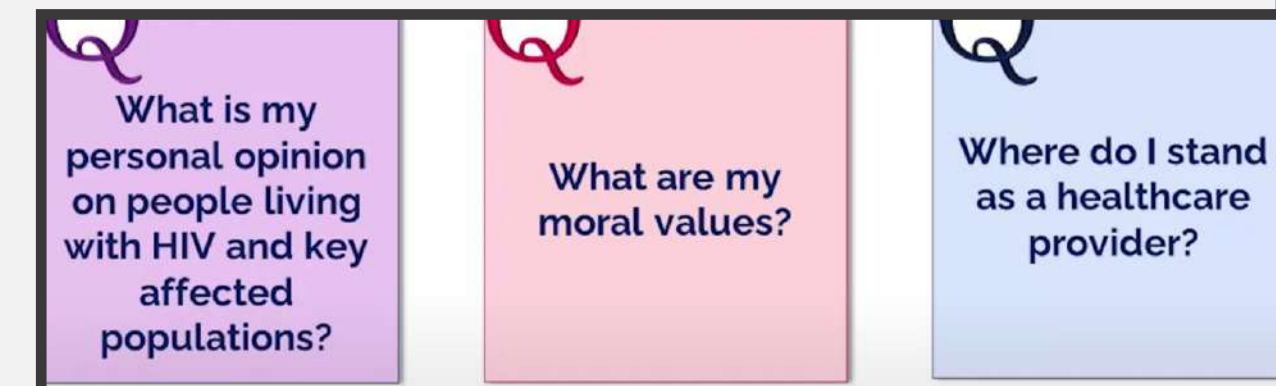
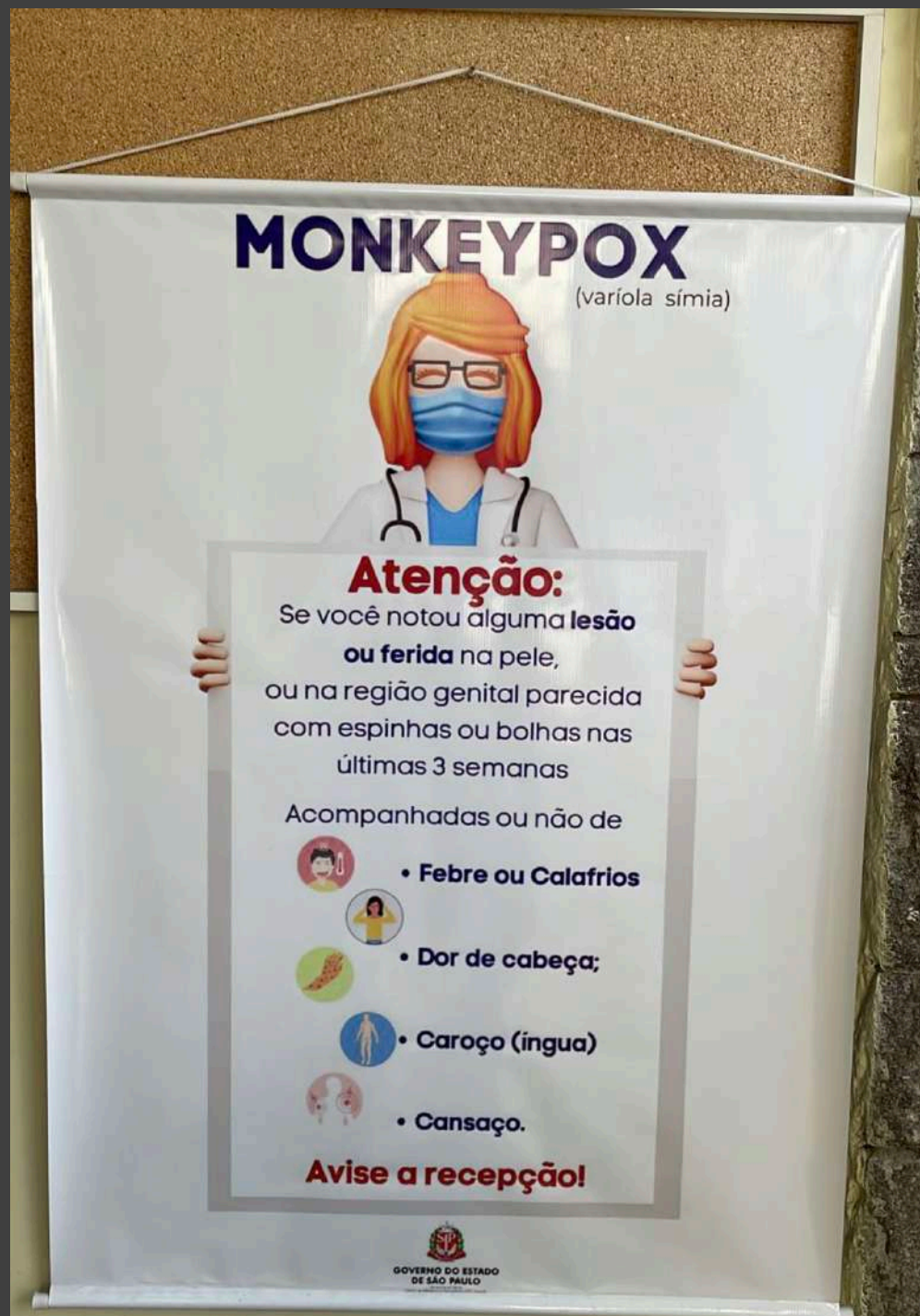
- 'Don't touch in me you have this pox pox disease',
- 'Promiscuity is the reason for this disease'

2-Who ? Where ? How?

3-Listen to professionals involved :

exhaustion vs prejudice

4-Training and reflection together with our multi-professional team: AVOID 'judgementalism'





- Timely, accurate, and evidence-based information to fuel “monkeypox panic” (given the low attack rate, CFR, of $< 1\%$) and discriminating stereotypes;
- Public health plus LGBTQI+ community;
- Multidimensional approach;
- Example : Transmission CLOSE CONTACT vs STI spreading via close social networks



- ACT trustworthy; (U=U is one the greatest examples)
- Designed to reinforce individuals intelligence , agency and dignity;
- People can understand complex messages as long as CLEAR;
- We often do not tell people WHY;
- Fear based messages: works very short period time and fuel stigma;

Place for ...



Welcoming environment



Trans people who made history in Brazil

Tips to you team

- **Examine your own attitudes, leave any bias or prejudice at home**
 - **Realise that we serve diverse populations (easier said than done)**
-
- **Include people living with HIV or members of key affected populations on your team**
 - **They will be your best guide to communicate (messenger and message)**
Join the table, not only hear
-
- **Be explicit and not assume that your patients feel comfortable with you**
-
- **Use non verbal communication (to do not say Monkeypox positive, not blame those infected, be kind, be respectful)**

S

Scan/survey the origin

P

Preemptively determine who and what be stigmatized

A

Activate proactive preventive measures using systems approach

R

Reemphasize the science (biology and epidemiology behind the outbreak)

E

Engage the communities that may be affected by the stigmatization

Take home messages

- **Proactive communication in your service;**
- **Check internal : homophobia, transphobia, stigma in your team;**
- **Channels of communication for users about STIGMA : TALK!**
- **User MUST evaluate entire appointment and report breaches;**
- **Training and recycling periodic ALL team : do not repeat same mistakes;**
- **Psychological follow up : anxiety, depression and isolation and pain;**
- **Vulnerable people : chance offering PEP, PrEP, immunization;**

Case Report

A case of suicide during the 2017 monkeypox outbreak in Nigeria

Dimie Ogoina^{a,*}, Abdulaziz Mohammed^b, Adesola Yinka-Ogunleye^c, Chikwe Ihekweazu^{c,1}

^a *Niger Delta University/Niger Delta University Teaching Hospital, Yenagoa, Bayelsa, Nigeria*

^b *Africa Centers for Disease Control and Prevention, Addis Ababa, Ethiopia*

^c *Nigeria Centre for Disease Control, Abuja, Nigeria*

Correspondence

Timely mental health care for the 2022 novel monkeypox outbreak is urgently needed

ARTICLE INFO

For Monkeypox.....

- Teams engage in gender equity work, build non-segregating or stigmatizing therapeutic approaches
- Develop health education and care plans focused on
- Empowerment of the population and health vulnerability reduction;
- Trained to act in the face of stigma, including
- Ethics in the relationships and that build a new epistemic population;



design action
and health
f stigma,
ng
action teams
MSM

Special thanks

My t

Com

EDU

Reflect

**“EVEN THOUGH WE HAVE
COME SO FAR IN TERMS
OF SCIENCE, WE HAVEN’T
GOT A PILL TO DEAL
WITH THE STIGMA”**

TOGETHER

Thanks for audience
insta: @dr.alvarocosta