

Rural Development National Policy CHILE

Mrs. Josefina Montero
Rural Development Department
ODEPA - MINISTER OF AGRICULTURE
July 2021



Ministry of Agriculture **Strategy**



Sustainable

*Agricultural and forestry
activity*



Collaborative

Construction



INDEX



01 *Rurality in Chile*

02 *Rural Development National Policy*

03 *Rural Health Challenges*





01.

Rurality in Chile



Rurality in Chile

RDNP Criteria (OECD)

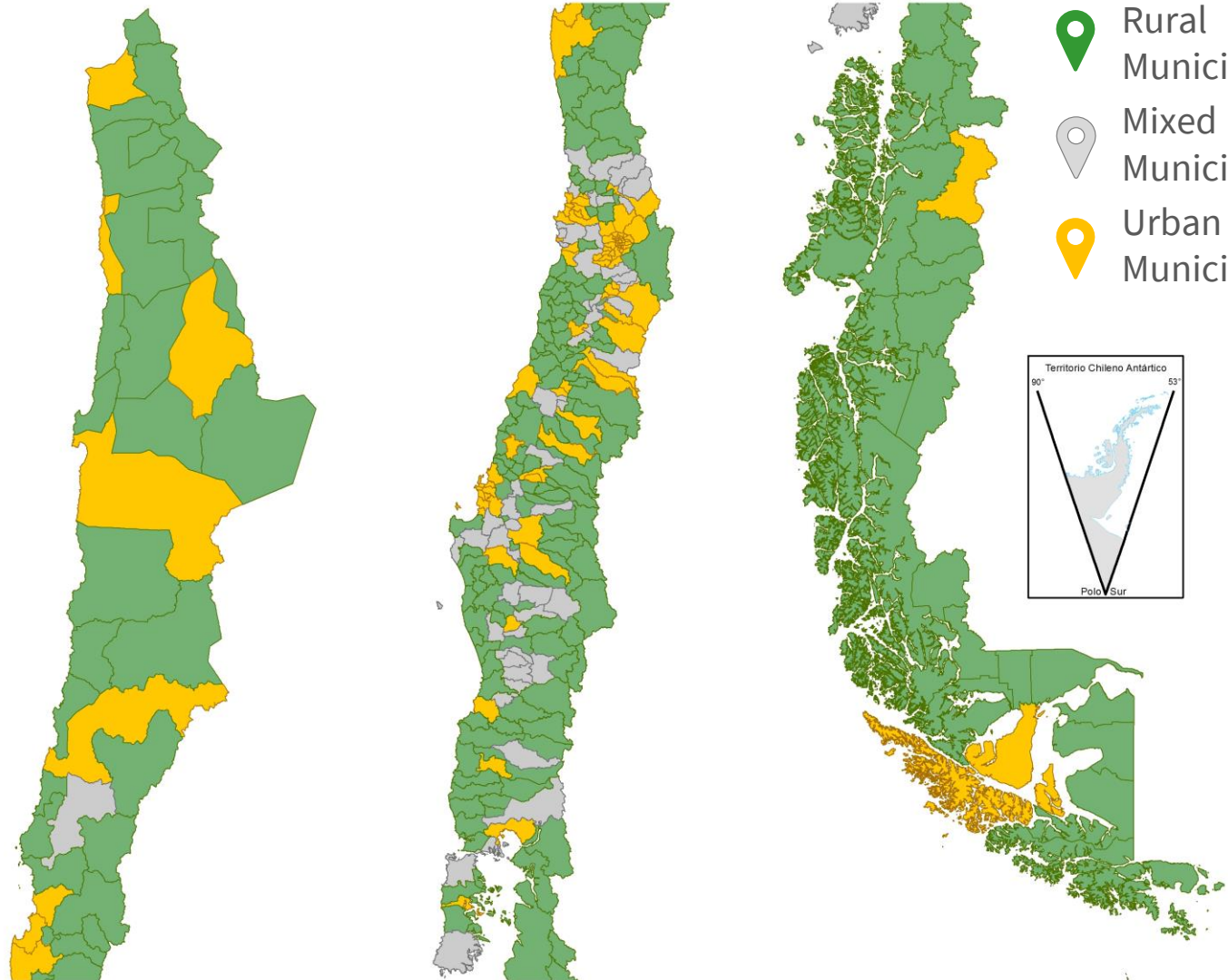
The 83% of the Chilean Surface


belong to rural and mixed municipalities (263 from the 346)

The 25,5% of our national population lives in rural areas.

Source: 2017 Census

*The analysis does not include the Antarctic territory.






16,8% of rural homes have a broadband connection. (67,8% urban homes)

Source: Telecommunications Secretary, 2019.

* RDNP Rurality criteria



54% of the rural population have access to drinkable water. The 98% of the urban population have access.

Source: Casen and Census 2017.

26,8% of the rural households does not have houses with acceptable building materials (13,5% of urban households).

Source: Census 2017.





In rural municipalities
there are **30,4**
doctors for every
100.000 inhabitants
(63,6 in urban
municipalities)



1/3 of rural
population have a
Health Care Center
near their homes
(85% in urban
municipalities)



In rural
municipalities, there
are **not available**
complex hospitals
or critical beds.

Rurality in Chile

A place of opportunities for the country



Decentralize

Promote rurality is also a **promotion of the regional development.**



Redistribute

More territorial equity in relation with the urban sectors.



Sustainable Future

To value the diversity and promote a productive development, in a **context of water scarcity and climate change.**



Long Term

A space for a collaborative work between the public sector, to work for **equalizing opportunities throughout the country.**



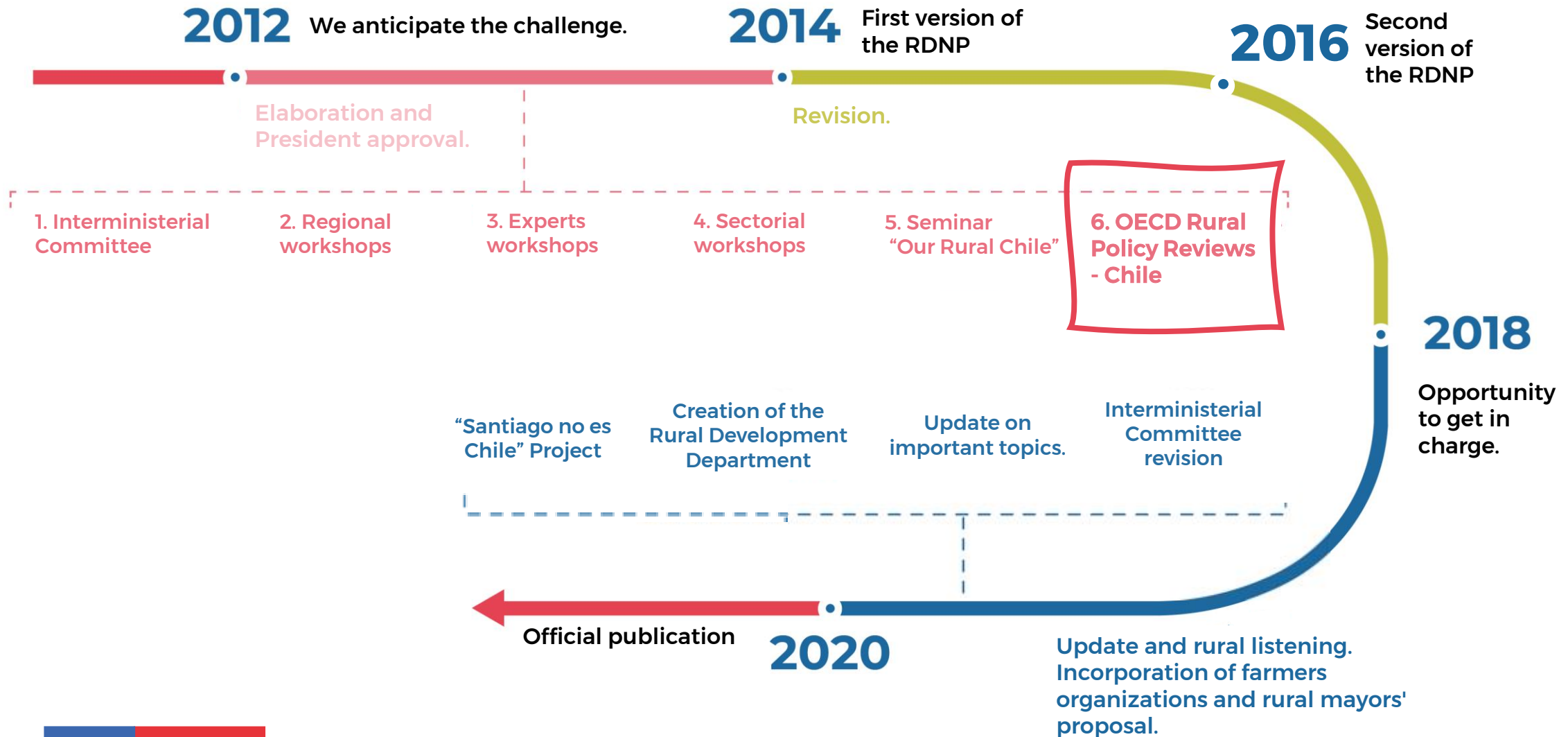
02.

Rural Development National Policy



Rural Development National Policy

Elaboration Process



Rural Development National Policy

54 guidelines to improve the quality of life and increase opportunities for the rural inhabitants of Chile.



1. Social Welfare

Reduce gaps for accessing goods and services.



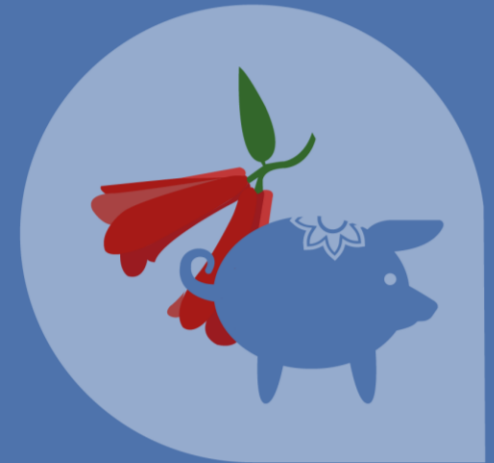
2. Economic Opportunities

Improve the local performance and dynamism



3. Environmental Sustainability

Value the natural landscapes and manage their risks.



4. Culture and Identity

Safeguard and enhance tangible and intangible heritage.

Governance

Rural Development National Policy

Governance

National



**Ministries
Committee**
Decision making at
national level.



National Council
Represents the
different actors of the
rural territory.

Regional



**Regional
Government**
They incorporate the RDNP
guidelines into the regional
strategic instruments.

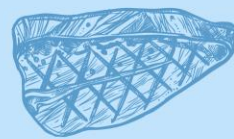
Local



Municipalities
They incorporate the
RDNP guidelines into the
local planification
instruments,

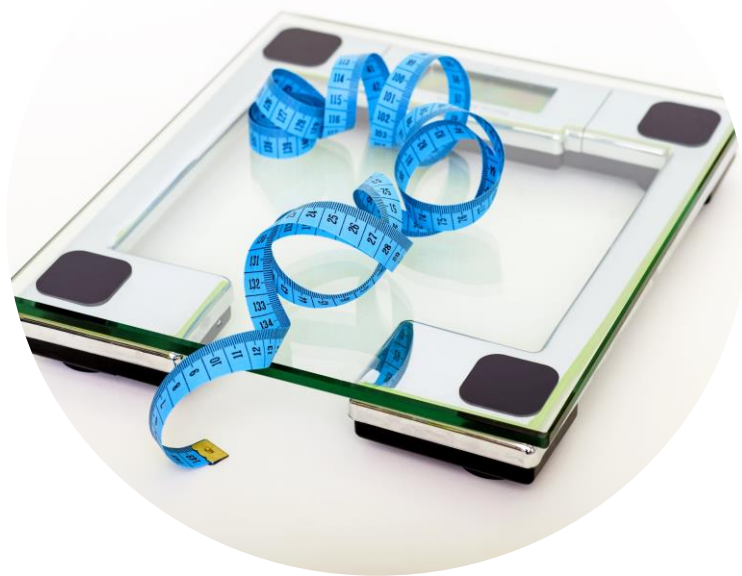
03.

Rural Health Challenges



1 Obesity:

43,6% of rural inhabitants are overweight.



2 Medical Specialties:

Rural municipalities lack of specialists.



3 Digital Connectivity:

Access to telemedicine, and other services.

