



# Attacks on Health Care Dashboard

Reporting period: 1 July to 30 September 2016 (Quarter 3)

## Overview

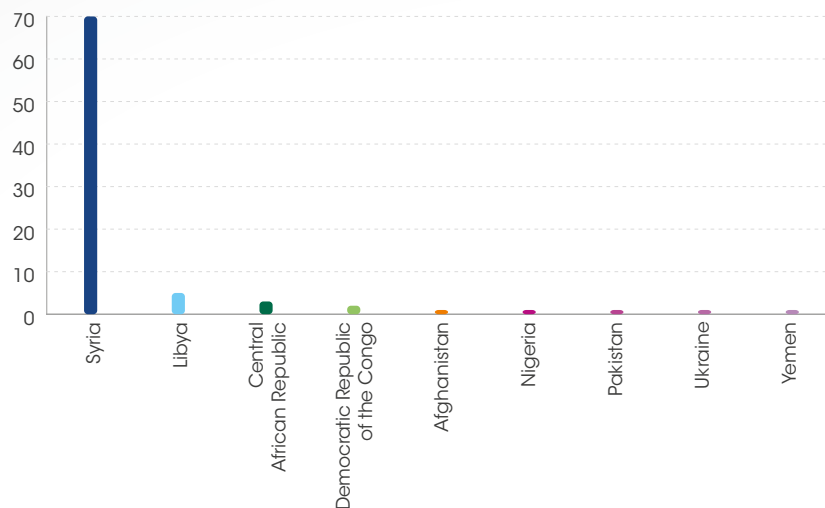
**85** attacks

**181** deaths

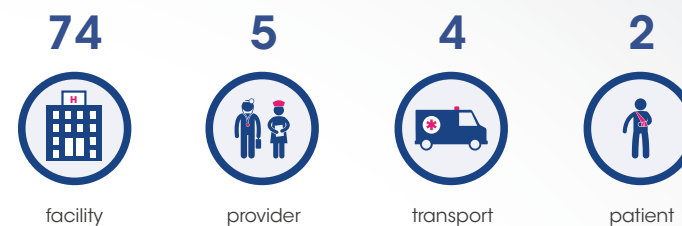
**173** injuries

**9** countries and territories

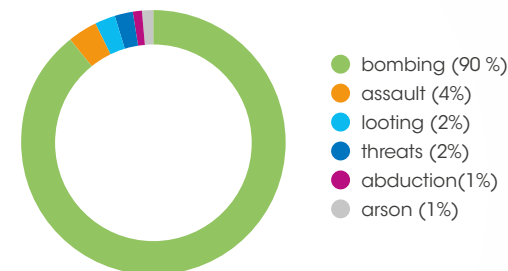
## Number of attacks



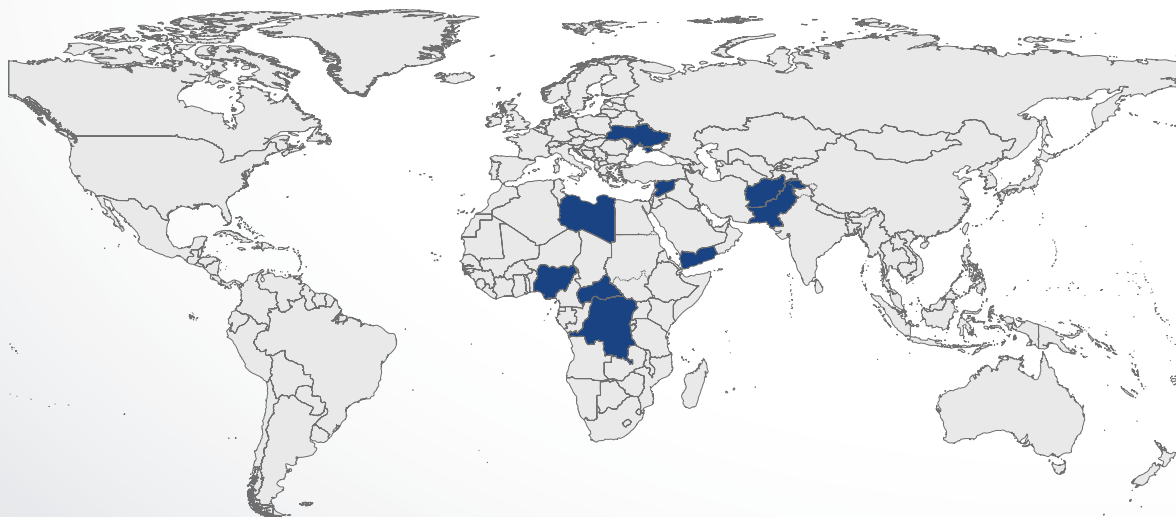
## Primary object



## Type



## Countries and territories with reported attacks (Q3 2016)



## 3-year comparative data

