



Attacks on Health Care Dashboard

Reporting period: 1 January to 31 March 2016 (Quarter 1)

Overview

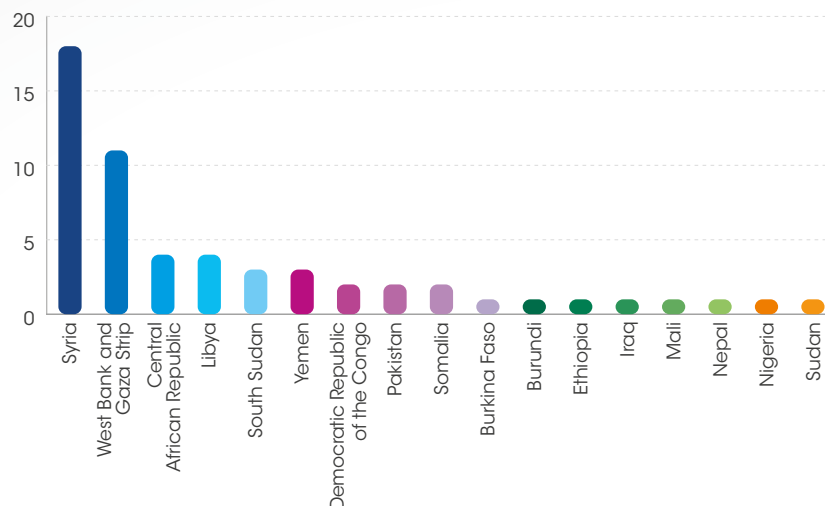
57 attacks

105 deaths

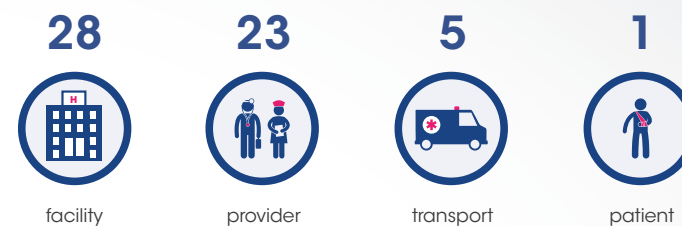
138 injuries

17 countries and territories

Number of attacks



Primary object



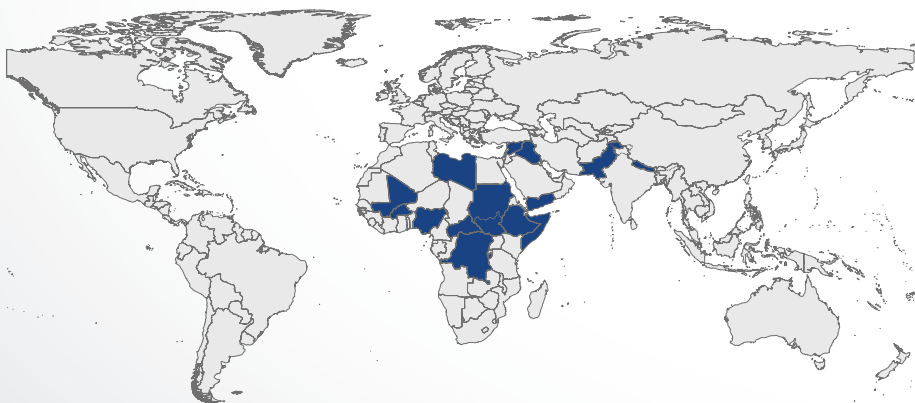
Perpetrator



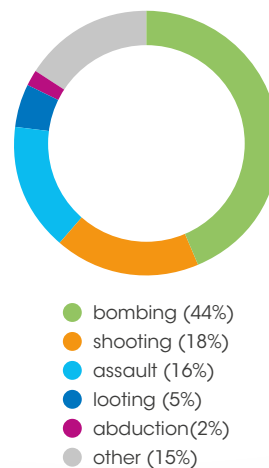
Intentionality



Countries and territories with reported attacks (Q1 2016)



Type



3-year comparative data

