



Overall approach for health workforce and workforce development

National Workforce Capacity for Essential Public Health Functions

Dr. Mathieu Boniol

Health Workforce Department

World Health Organization



Multi-dimensional demands on health systems



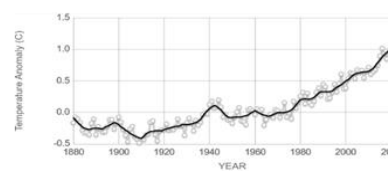
SDGs



Globalization



Conflict and war



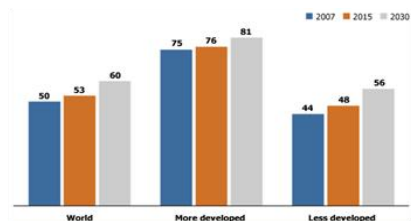
Climate change



Infectious disease outbreaks



Innovation



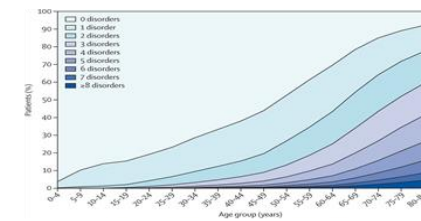
Urbanization



Refugees, IDPs and Migration



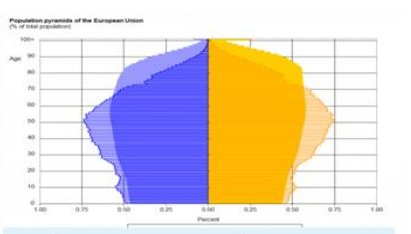
Antimicrobial Resistance



Multi-morbidity including NCDs



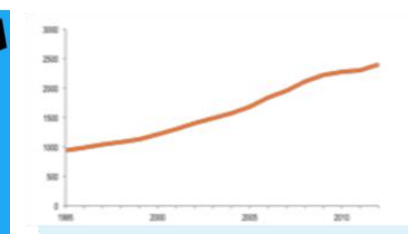
Civic voice



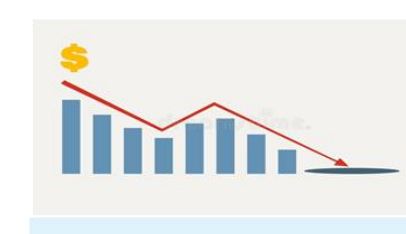
Aging populations and youth



Gender & inequality



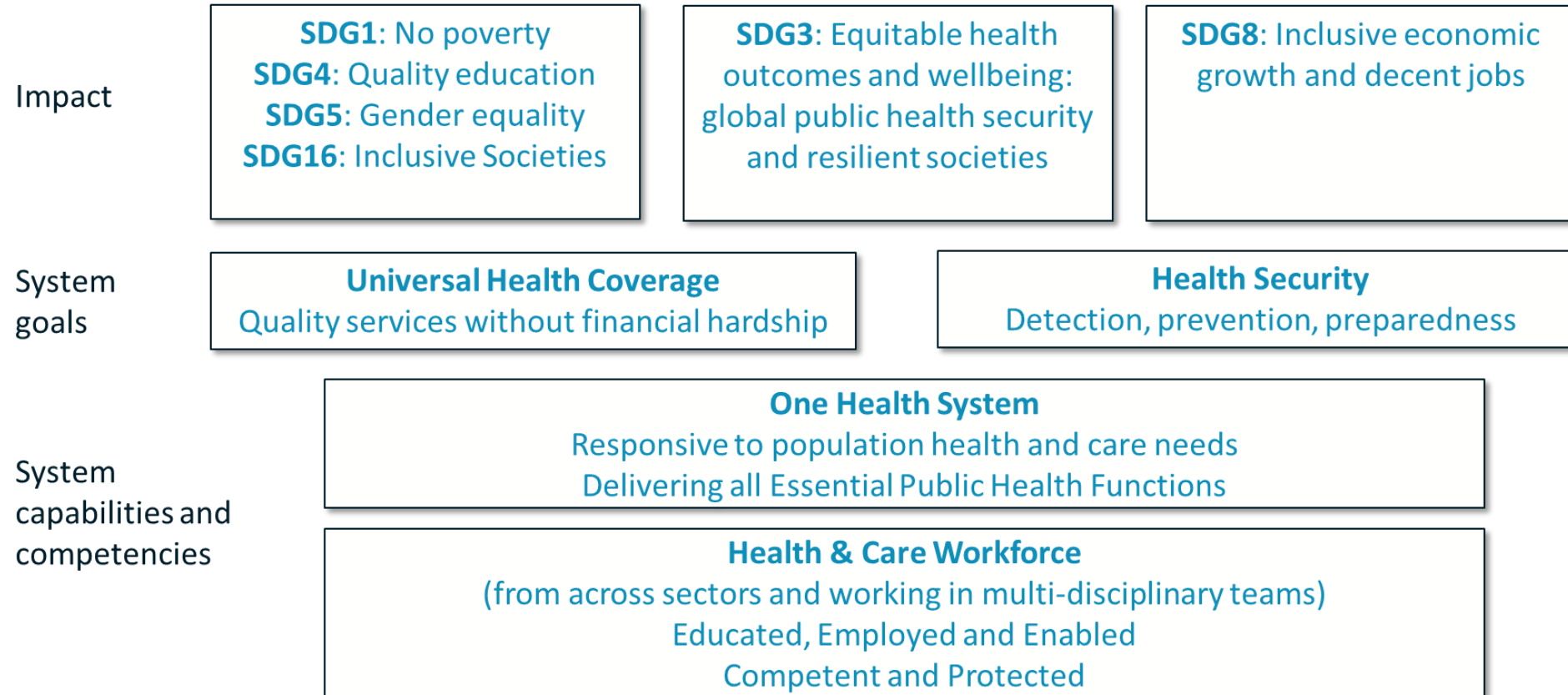
Rising costs



Economic recessions



Sustainable health and care workforce: framing



Adapted from Kieny et al (2017). Strengthening health systems for universal health coverage and sustainable development



Theory of change: **Data -> Dialogue -> Decision -> Dollar.** Underpinned by Workforce Science

Phase 1:

National public health workforce baseline capacity & gaps assessment

Phase 2:

National policy dialogue

Phase 3:

National public health workforce plan and strategy for next 1-2 years

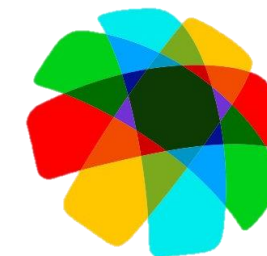
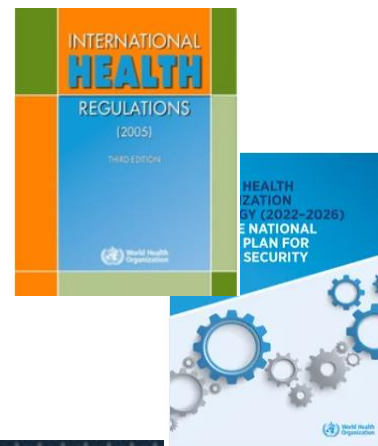
Cross cutting:

Monitoring and Evaluation

- **Data analysis and benchmarking** assists in identifying gaps and setting priorities across the three action areas.
- **Health and care workforce monitoring:** through the *National Health Workforce Accounts* (3-levels National, Regional, Global)



- **Dialogue** across sectors and partners
- **Links** with capacity development related to International Health Regulations, National Health Security Action Plans etc, etc.
- **Decision:** national policy / strategy / action plan



\$\$\$

Domestic

+ other sources
(e.g. The Pandemic Fund)

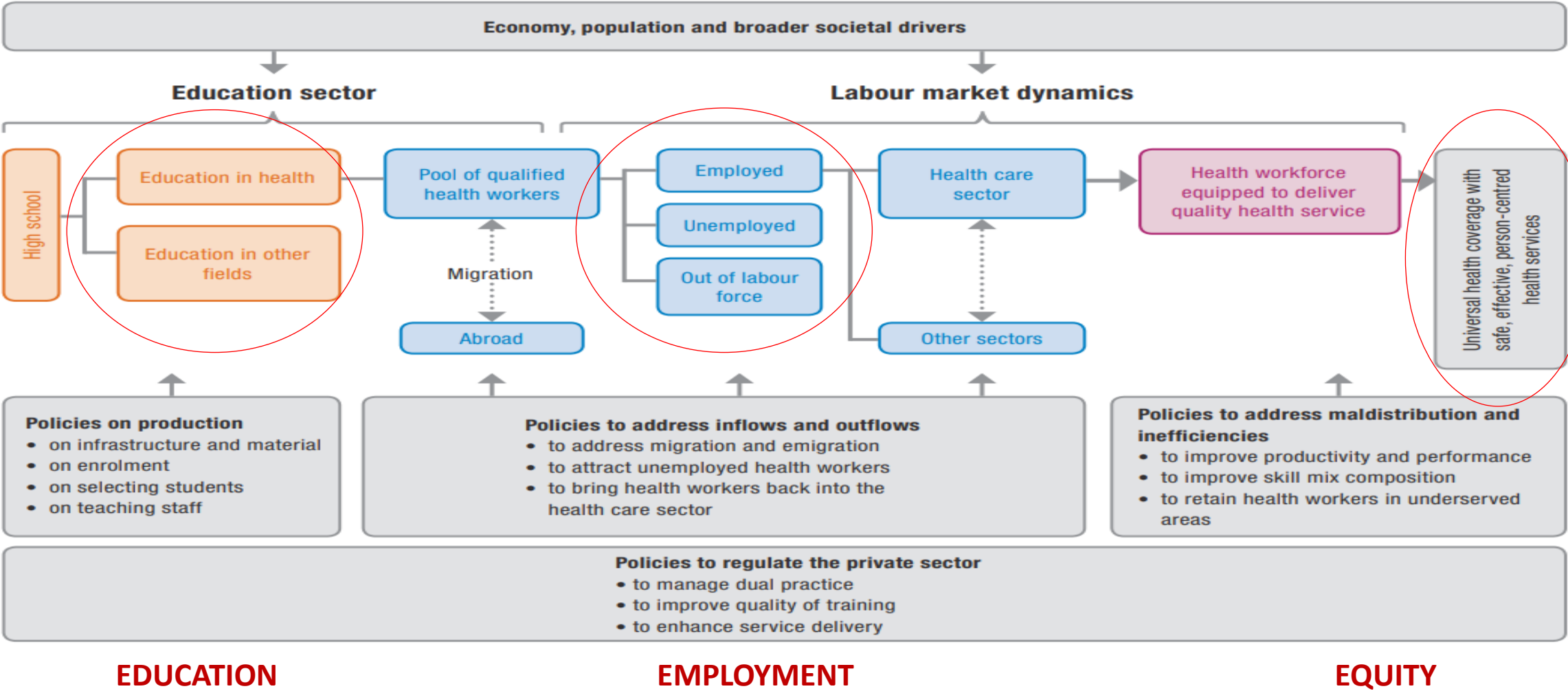


Workforce
Science

Capabilities
+
Competencies
+
Change

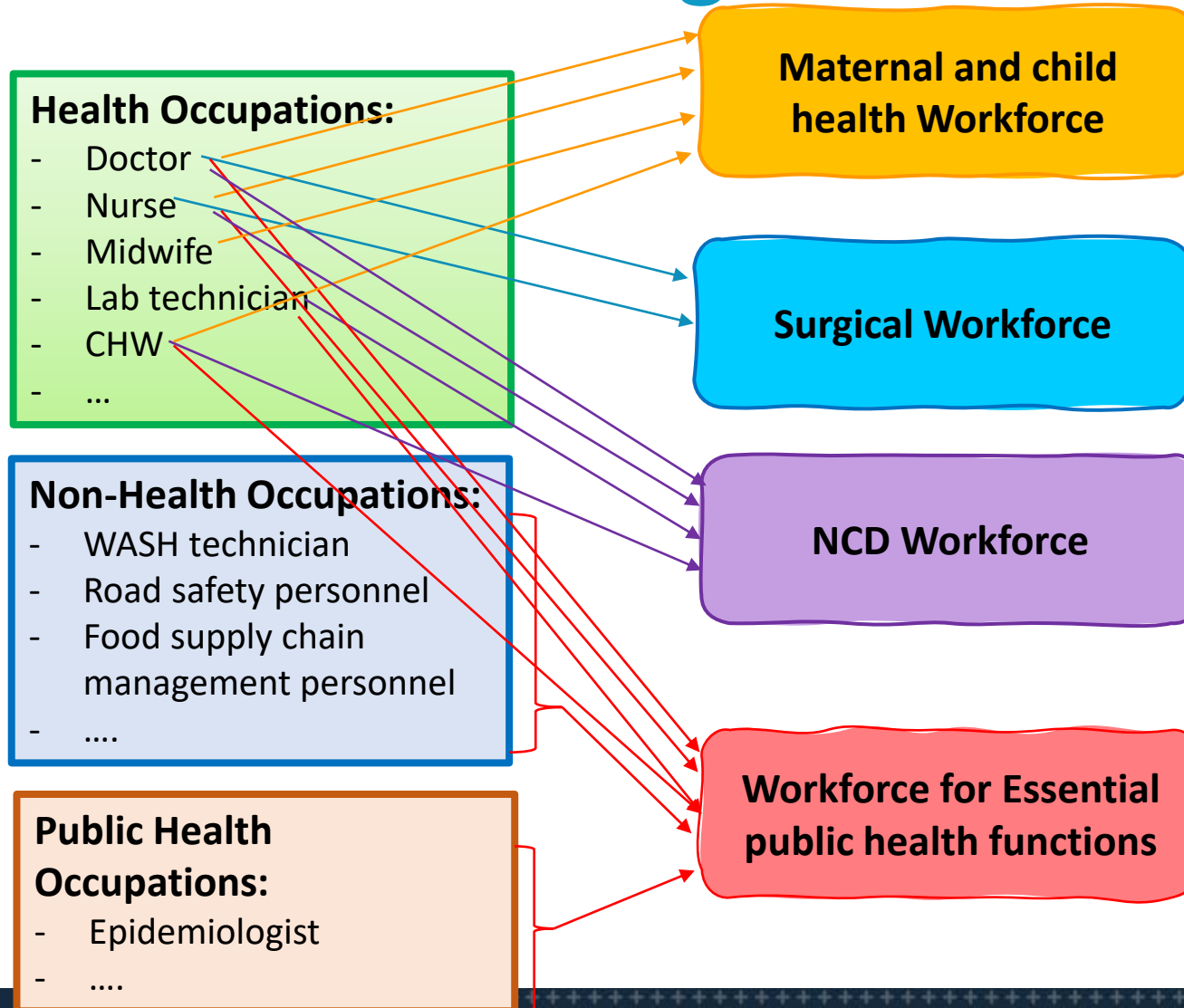


Closer alignment to society's needs: a health labour market lens



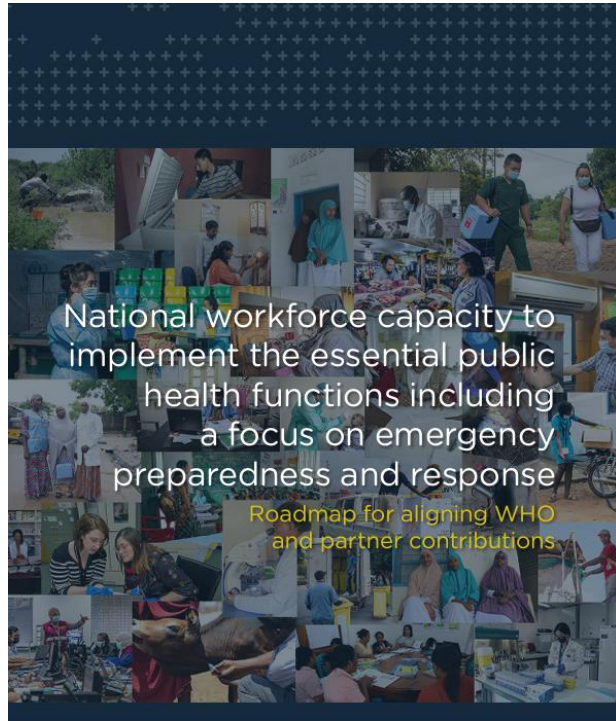


Understanding the workforce

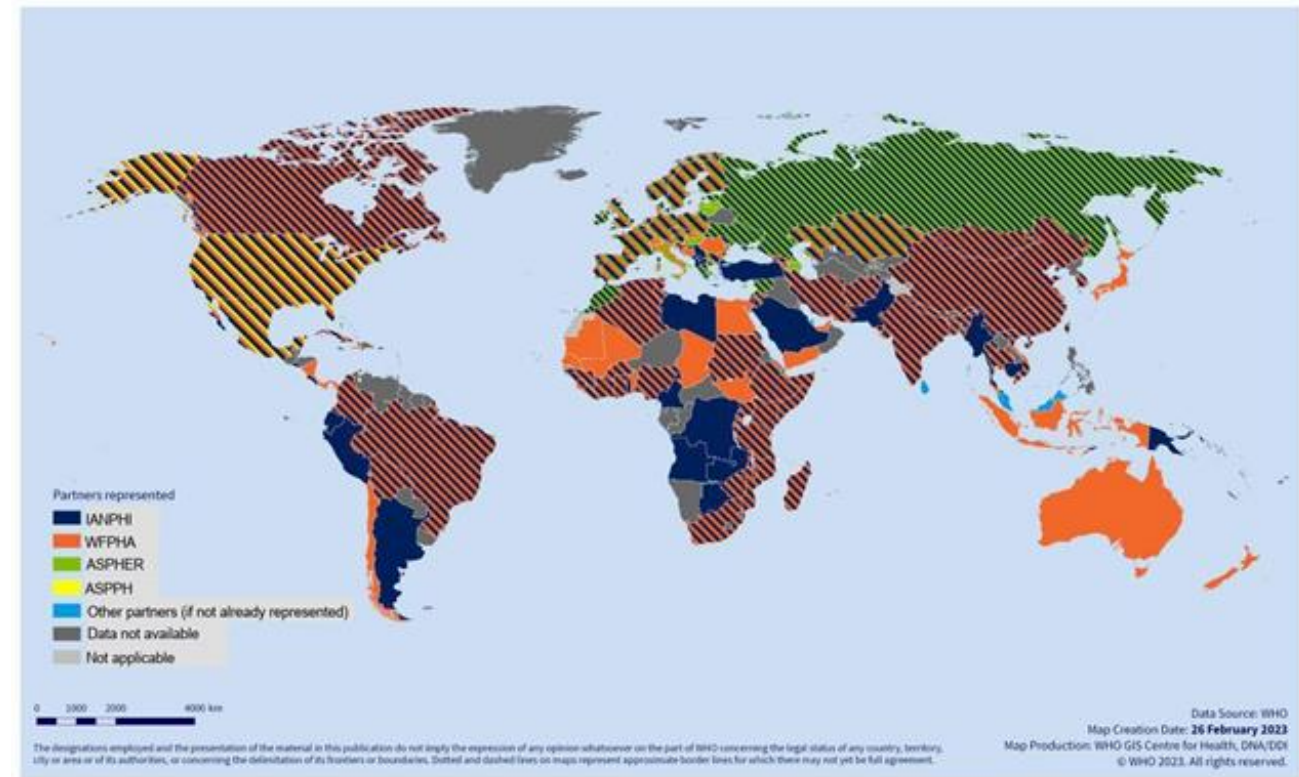




About the Roadmap: a partnership of associations, institutions and schools of public health



- >70 partners
- Operating in >123 (63%) of the world's countries
- Covering >72% of the world's population





A "roadmap for aligning WHO and partner contributions"



Welcomed WHO's Roadmap for Public Health and Emergency Workforce, and the opportunity to align activities and investments with the Roadmap to build national capacity for essential public health functions.



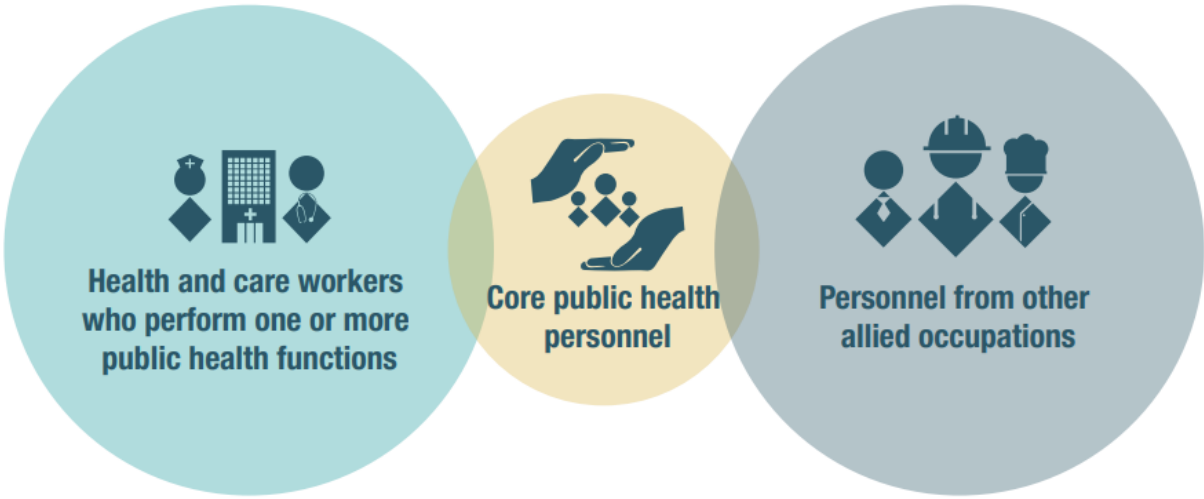
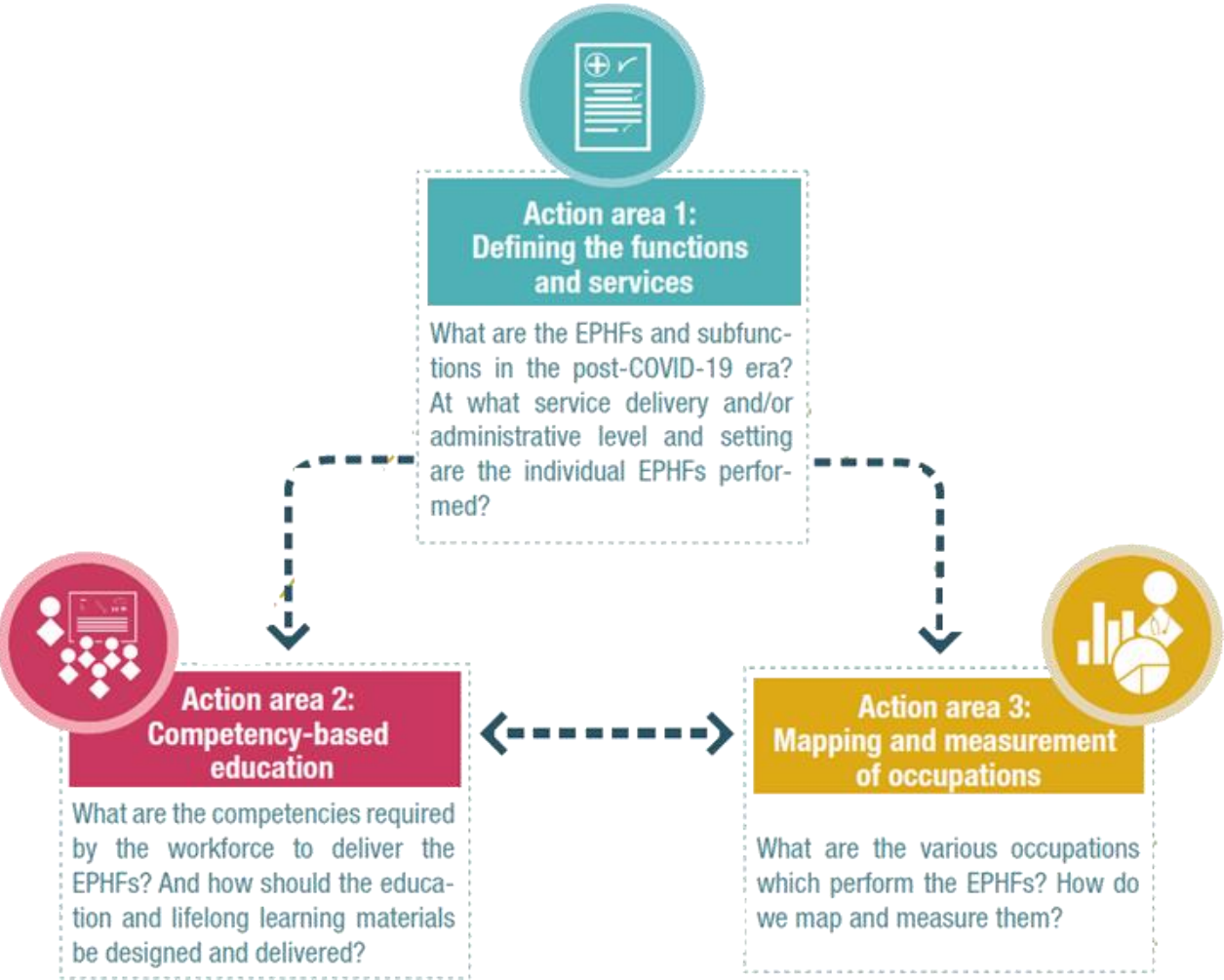
Global Outbreak and Alert Response Network

The Global Field Epidemiology Partnership





Three interrelated Action Areas to strengthen the public health workforce





National Workforce Capacity for Essential Public Health Functions Collection



Scan the QR code to
access National
Workforce Capacity for
Essential Public Health
Functions Collection



www.who.int/teams/health-workforce/PHEworkforce/



Thank You!



[Show your support: Endorse the Roadmap](#)

Contact us: phewf.roadmap@who.int