

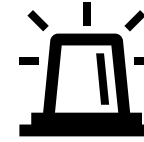
UNICEF collaborative work with WHO on signals



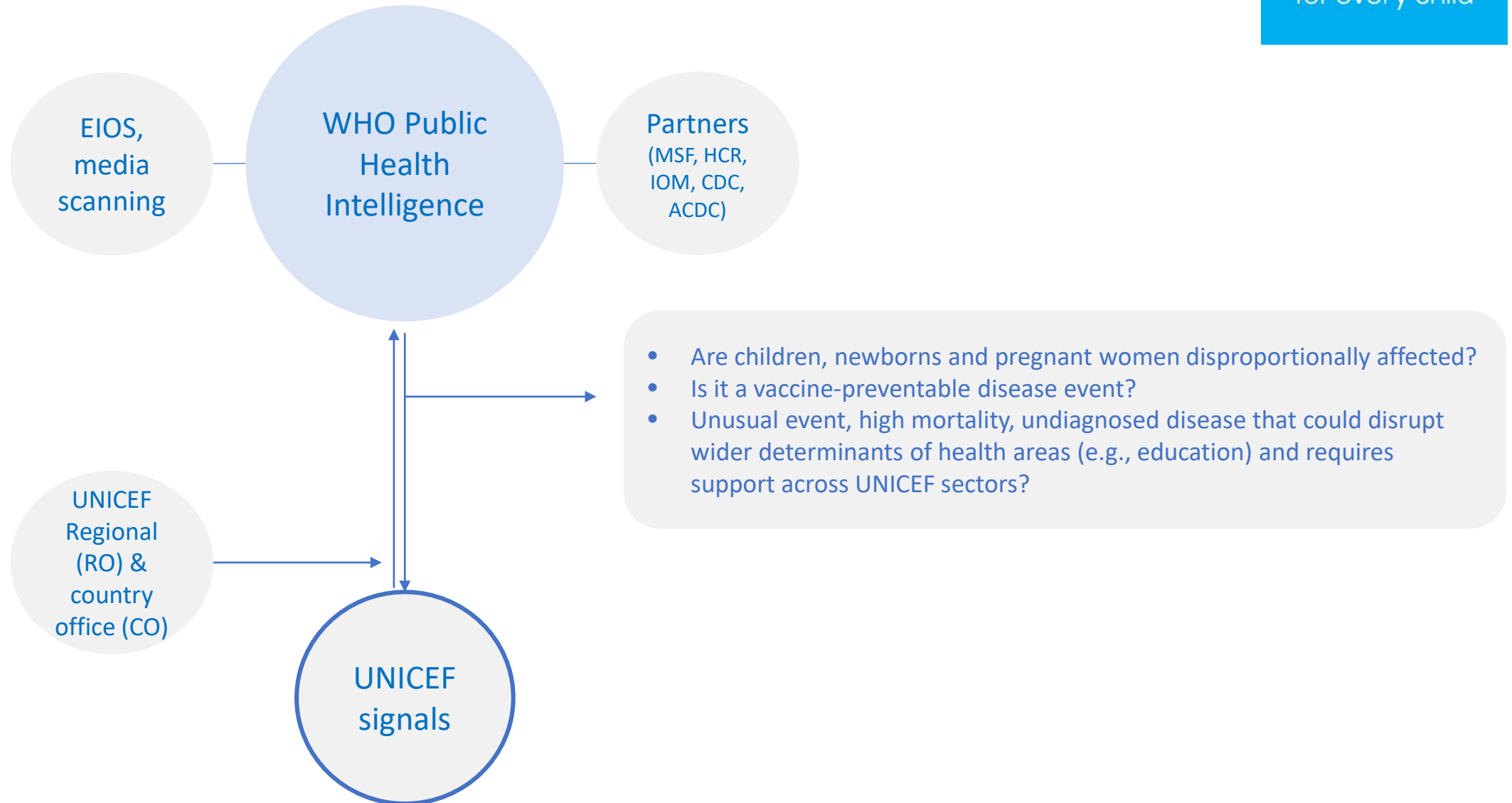
31 October 2024



UNICEF – Signal/alert sources and triage



unicef 
for every child



PHE Alert communication within UNICEF

Action	Headquarter
Within 24 hours Notification	<ul style="list-style-type: none"> Alert/signals received and entered into the UNICEF signal tracker for monitoring Depending on source of alert, notify RO/CO, HQ relevant section, Emergency Programmes (EMOPS), UNICEF senior management, WHO or Global Outbreak Alert Response Network (GOARN) and request for additional information if available. UNICEF provides RO and CO with relevant technical guidance as required.
Within 24-48 hours Assessment	<ul style="list-style-type: none"> As required, UNICEF Associate Director HEPR (Health Emergency Preparedness and Response) updates Office of Executive Director. Based on discussion with RO, HQ PHE Unit to propose a 3-level technical call (CO, RO, and HQ)
Within 7 days If a response is warranted (Scale, Urgency, Complexity and Country Capacity)	<ul style="list-style-type: none"> The event is reviewed with the PHE extended team during weekly epi update. The level of UNICEF's engagement may also depend on the emergency level attributed by WHO. If the response requires enhanced HQ support: <ul style="list-style-type: none"> The Associate Director HEPR to identify a coordinator for the event at HQ for global coordination. Implement a surge based on needs, mobilize funding, preposition supplies As required, based on the assessed risk of the public health threat, the Associate Director of HEPR convenes an advisory group to determine the level of emergency for UNICEF.
If event is discarded	PHE unit to notify relevant colleagues and partners. Event is closed in the PHE signal tracker.

Example - Diphtheria outbreak

Mauritania October 2023

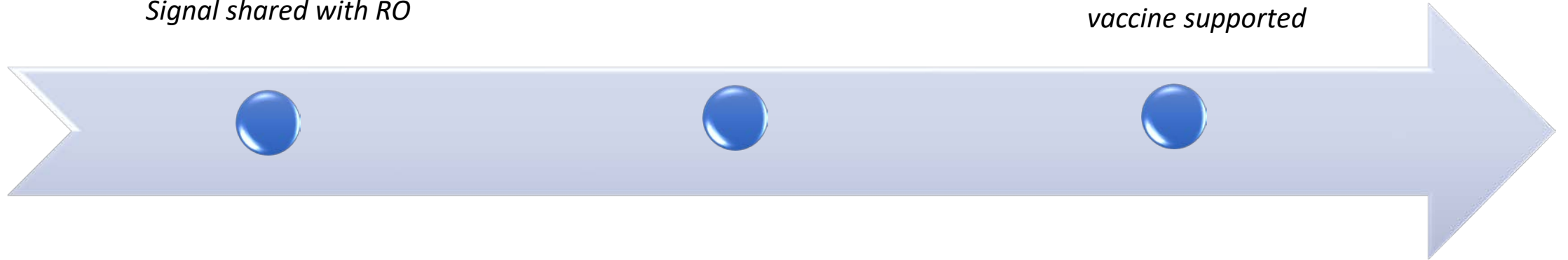
24 Oct: Signal received from WHO PHI

Diphtheria outbreak
Mauritania/Fassala.

Signal shared with RO

26 Oct: Activation of 383
community health workers to
support Risk Communication and
Community Engagement (RCCE).
Ongoing funding to support
vaccination of zero dose children
in the area. Logistical support for
vaccine supported

25 Oct: RO shared signal
with CO. CO set Meeting
with MOH and WHO



Added value for UNICEF



By working closely with WHO Public Health Intelligence (PHI) team, UNICEF:

- ✓ Timely access to signals everyday
- ✓ Timely information to senior management, RO and CO, and across all UNICEF sectors
- ✓ Reactivity and timely response and coordination UNICEF-WHO at field level
- ✓ Better focus on our mandates, which are different from WHO

Working towards better coordination between UNICEF and WHO at regional and country level for signal monitoring and follow-up

Thank you

