



**MINISTÈRE  
DU TRAVAIL, DE LA SANTÉ,  
DES SOLIDARITÉS  
ET DES FAMILLES**

*Liberté  
Égalité  
Fraternité*

# **OLYMPIC AND PARALYMPIC GAMES PRESENTATION**

## **Intergovernmental coordination and Surveillance**

### **EPI-WIN Webinar - February 12, 2025**

**Direction générale  
de la santé**

## Context and key figures

Olympic torch relay

From May 8 to July 26 2024



**15 000** athletes

Olympic Games : 329 competitions

From July 24 to August 11 2024



**12 millions**  
estimated spectators



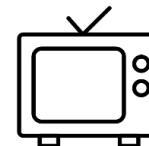
**45 000**  
volunteers



**24 000**  
journalists

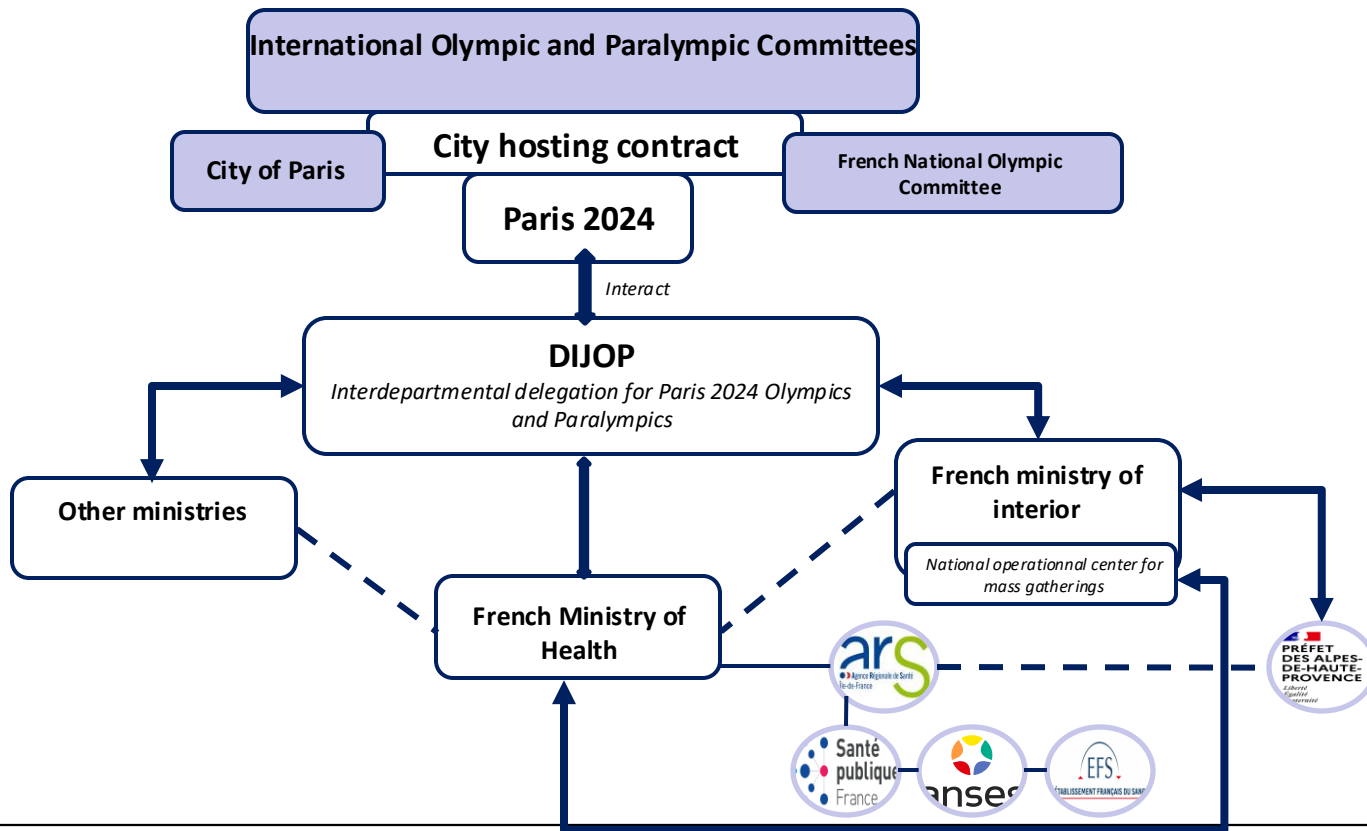
Paralympic Games: 549 competitions

From August 28 to September 8 2024



**5 billions**  
viewers

## The Paris 2024 Olympic Games preparation framework



## Directorate General for Health's priorities for health security preparation for Olympics and Paralympics

1

Identifying and managing  
health risks and threats

2

Setting up response  
mechanisms to deal  
with an exceptional  
health situation(SSE)

3

Organization of  
operational management  
of health alerts in the  
event phase - Operational  
management

# **SURVEILLANCE DURING THE OLYMPICS AND PARALYMPICS 2024**

*EPI-WIN Webinar - February 12, 2025*

Marie Hamsany

Project manager – Mass Gatherings

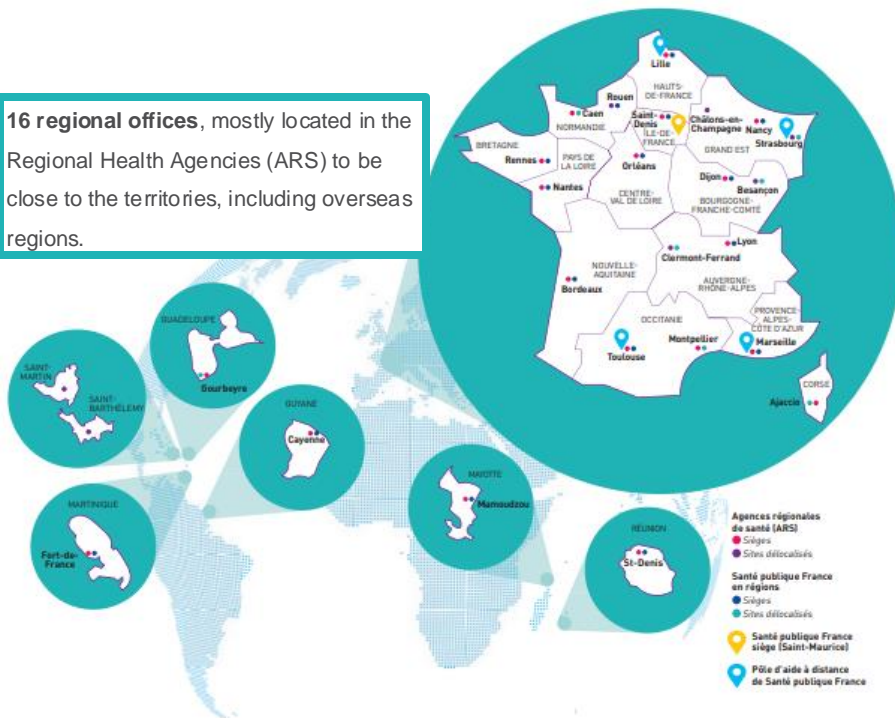
Alert and Crisis Department - Santé publique France

## MISSIONS

- **Epidemiological observation and monitoring** the health status of populations;
- The **monitoring** of health risks that threaten populations;
- The **promotion** of health and reduction of health risks;
- The development of health prevention and education;
- The **preparedness and response** to exceptional health situations;
- The launch of health **alerts**.

Santé publique France establishes guidelines, leads and coordinates its actions in accordance with the missions assigned to the Regional Health Agencies.

**16 regional offices**, mostly located in the Regional Health Agencies (ARS) to be close to the territories, including overseas regions.



## Objectives:

- **Early detection and warning**
- **Rapidly assess the impact of** a health event or exposure to an environmental hazard suspected of having an impact on health
- **Provide figures** on health-related events occurring in the context of the Olympic Games

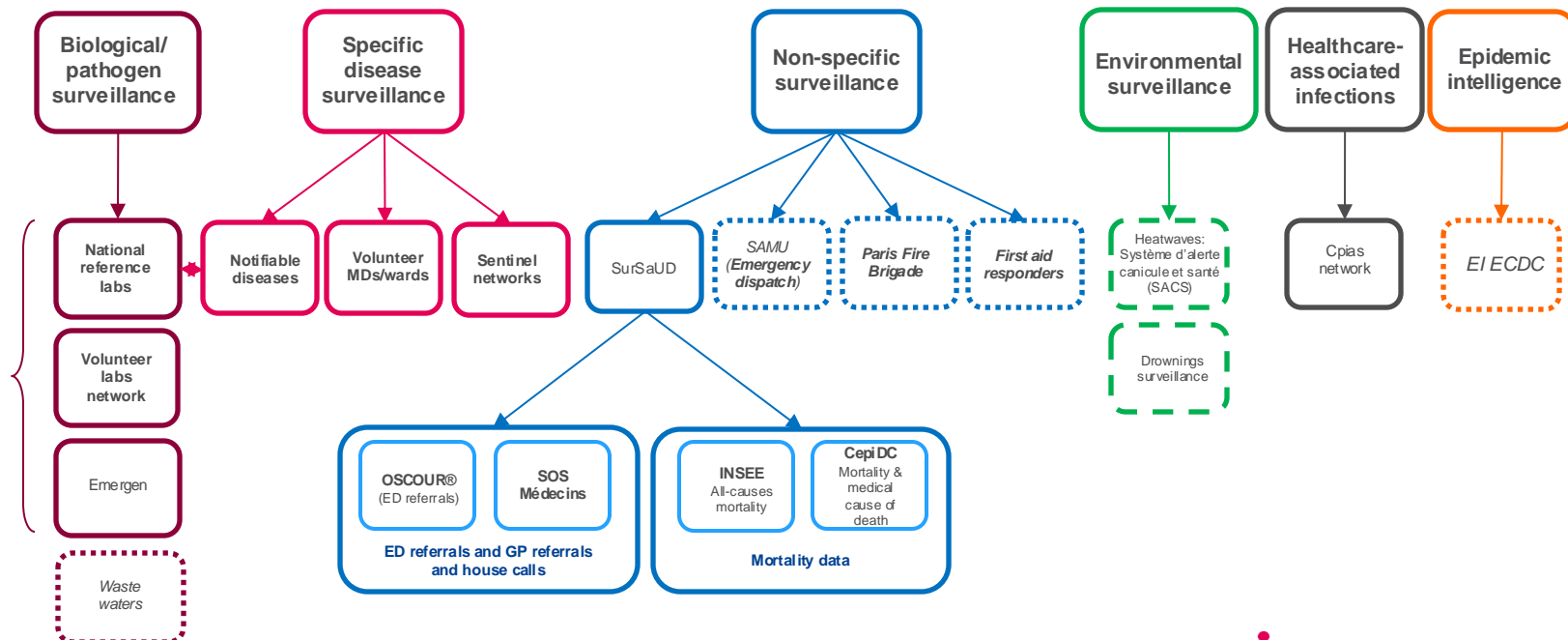
**Initial milestone: Health risk mapping** (probability of occurrence x impact = criticality) in collaboration with the Ministry of Health and regional health authorities. Among others:

- Heat wave / arboviruses/ measles
- Foodborne outbreaks, notifiable diseases requiring urgent action

**Reinforced surveillance period** – July 8 - September 15, 2024

**Daily reporting period:** July 15 - August 8; **AND** August 21 - September 9

# OVERVIEW OF SURVEILLANCE SYSTEMS



**No major event linked to the OPG during the Games**

**1** heatwave alert in departments hosting OPG events

**321** deliverables during the Games (daily/weekly; national/regional)

**5** syndromic surveillance systems analyzed every day (> 60 indicators analyzed every day and every week)

**24** new duty lines dedicated to the Games



[Accueil](#) - [En](#)

## 2024 Olympic and Paralympic Games

In this section you will find all the information you need about Santé publique France's involvement in the 2024 Olympic and Paralympic Games, along with resources for national and regional surveillance.



Health surveillance weekly report  
Publication date: 11 September 2024

NATIONAL EDITION

**Week 36 (2 to 8 September 2024)**

### Key points

#### Syndromic surveillance

- In week 36, emergency department visits and SOS Médecins consultations remained stable compared with the previous week in all age groups, except for an increase in the under-15 age group, as expected at the start of the new school term.
- Also as expected for this time of year, the number of emergency department visits and SOS Médecins consultations for respiratory pathologies continued to rise.

#### Surveillance of emergency medical services

- In week 36, the daily number of calls to the emergency medical services (SAMU) at the national level did not exceed alert thresholds on any day.

#### Wastewater surveillance

- In week 36, the overall upward trend in SARS-CoV-2 circulation levels in wastewater continued, although circulation was still of low intensity.