

Update on influenza and respiratory syncytial virus activity

Aspen Hammond

Global Influenza Programme

Epidemic and Pandemic Threat Management

WHO Health Emergencies Programme

WHO EPI-WIN WEBINAR



Update on influenza, COVID-19 and other respiratory viruses: focus on the winter season in the Northern hemisphere



13:00–14:00 CET (Geneva)

Wednesday, 19 Feb 2025

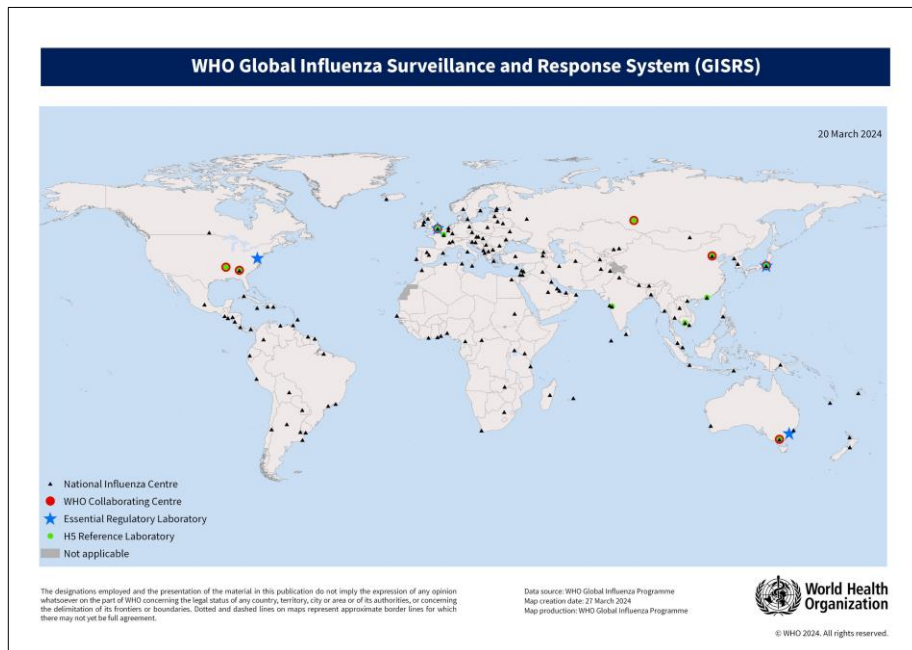


REGISTER HERE

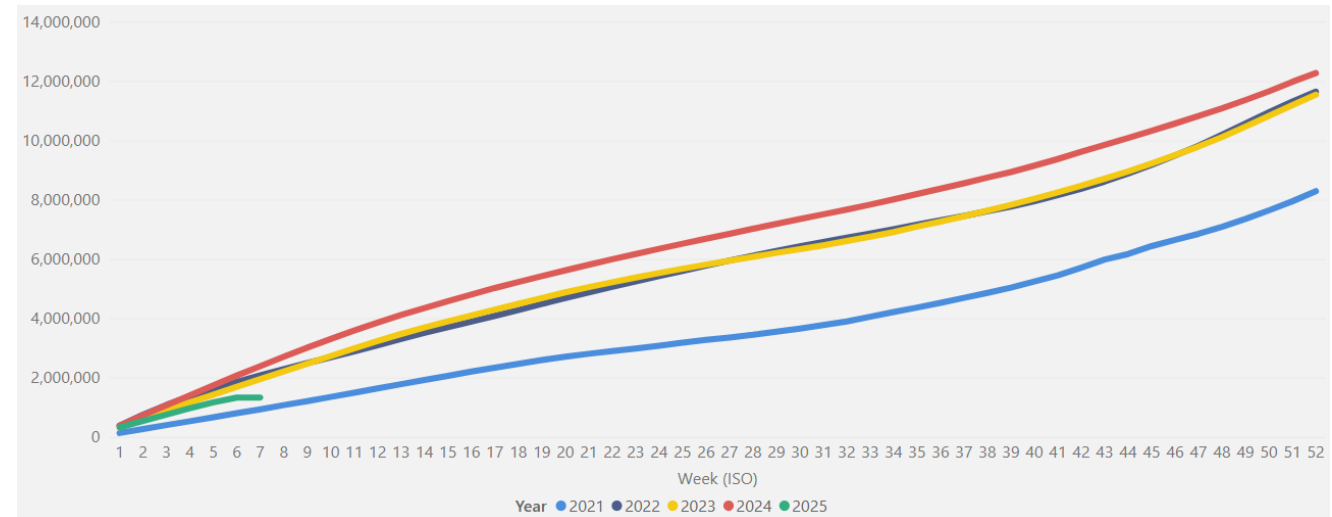
WHO approach to influenza since 1952 - GISRS

For over 70 years, the **Global Influenza Surveillance and Response System (GISRS)** has been the foundation for influenza surveillance, preparedness and response

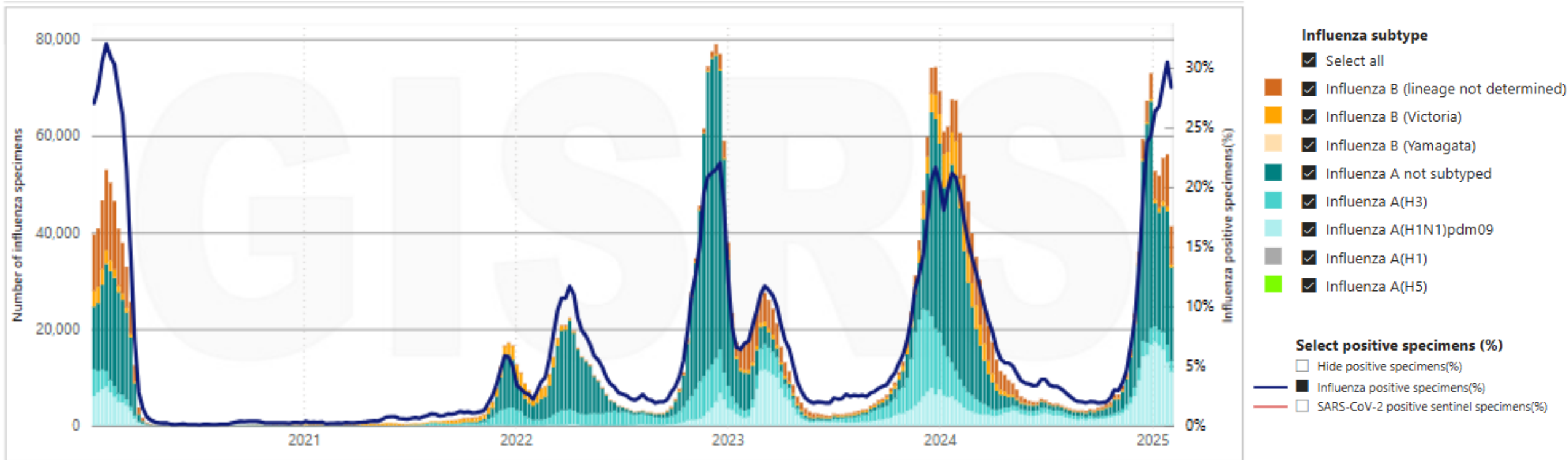
Enormous commitment from Member States
Enormous support from international agencies & partners



Number of specimens tested for influenza by GISRS by week, cumulative

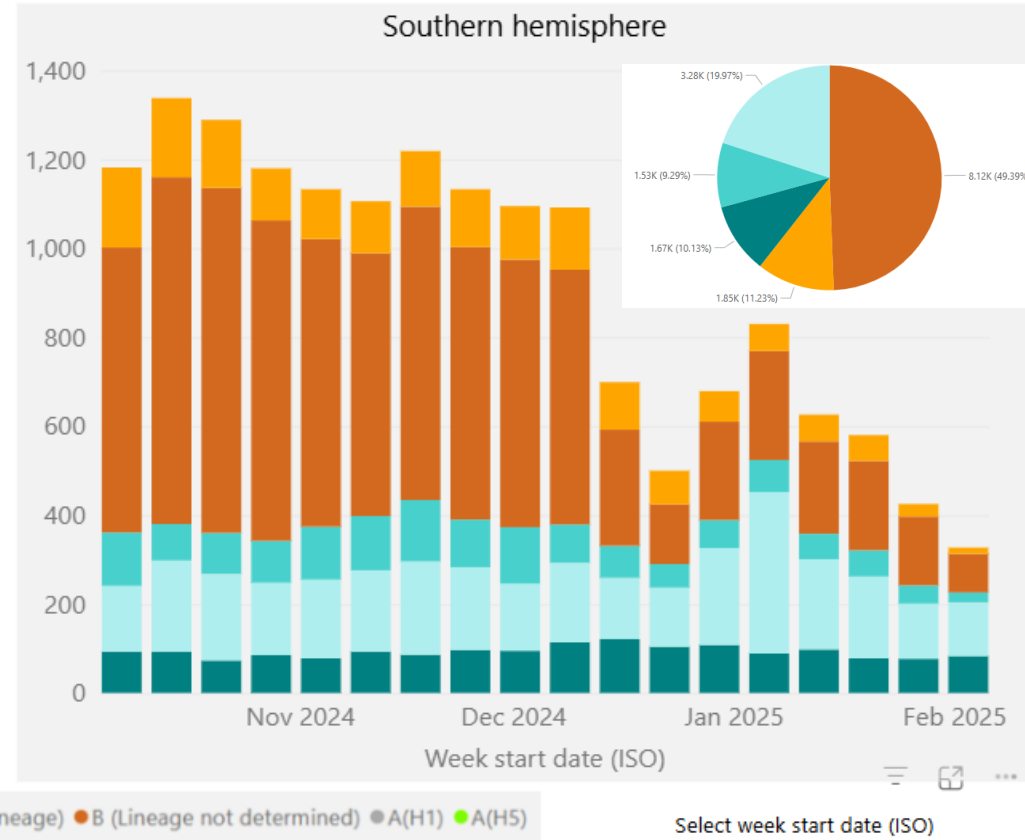
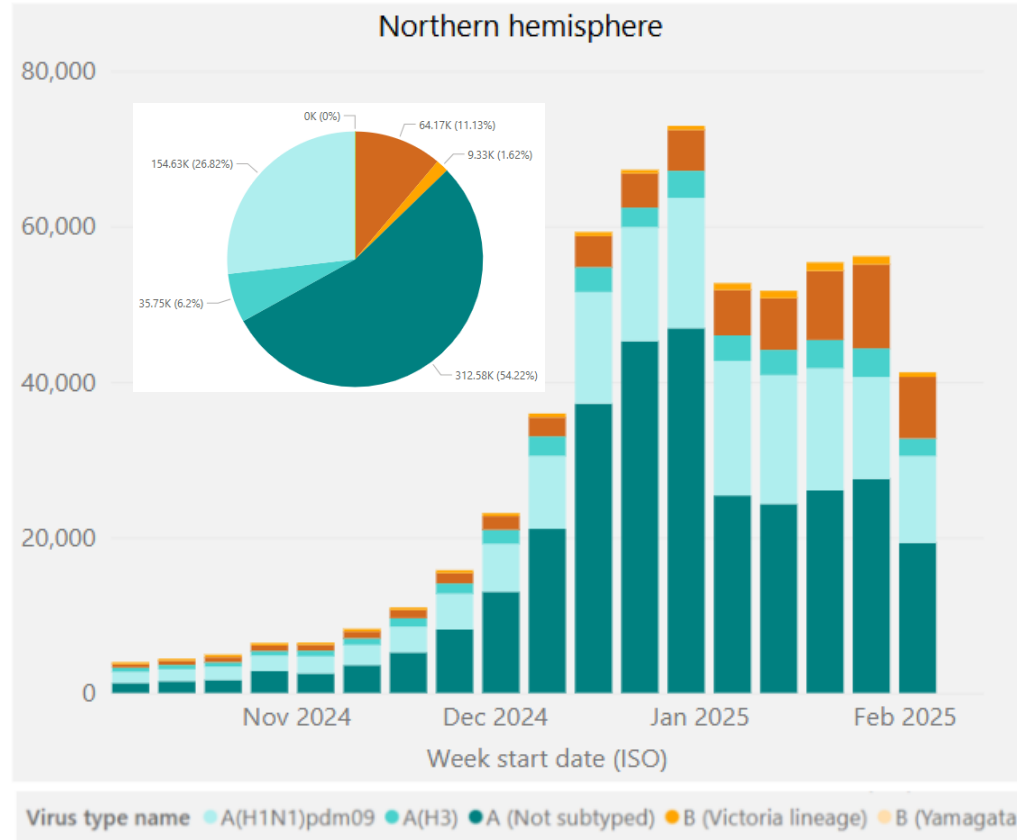


Influenza activity in the Northern Hemisphere since 2020

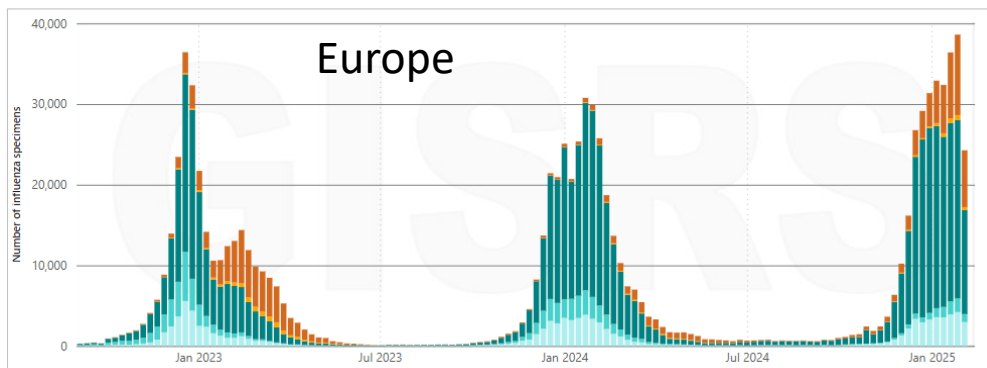
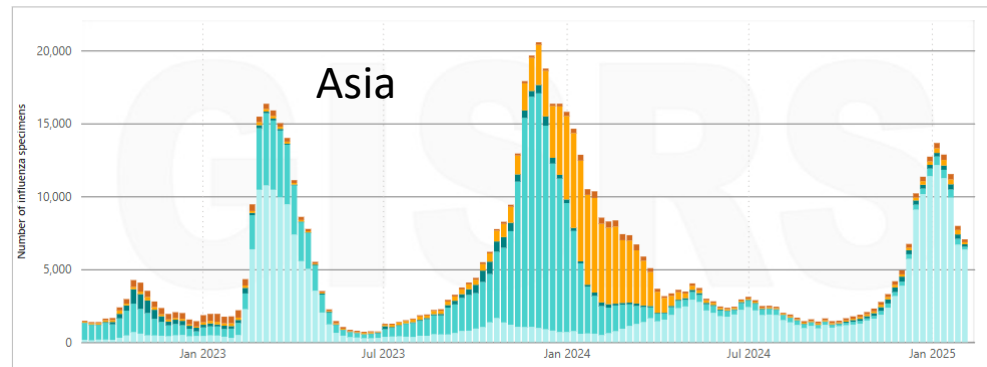
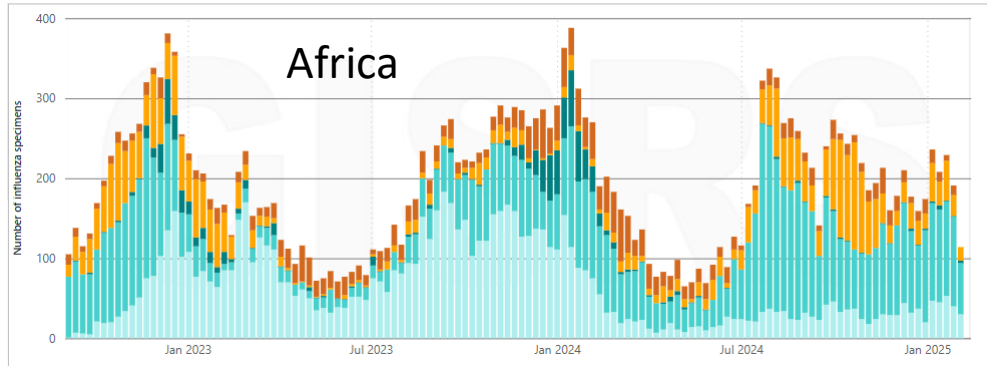


Influenza activity since Oct 2024

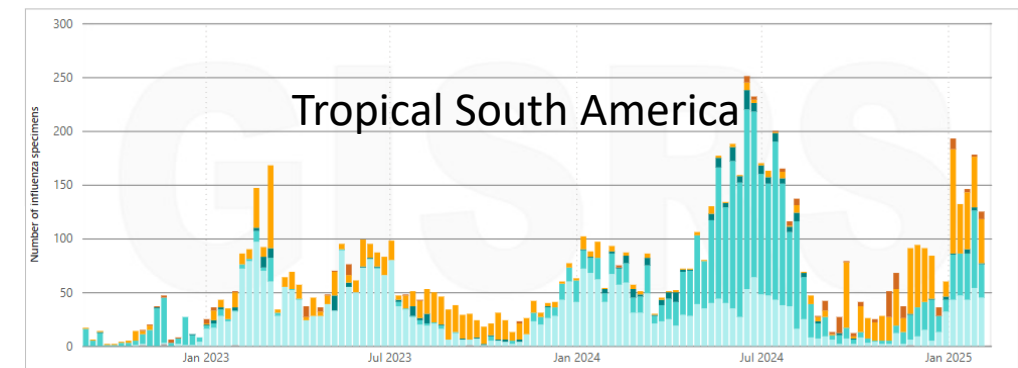
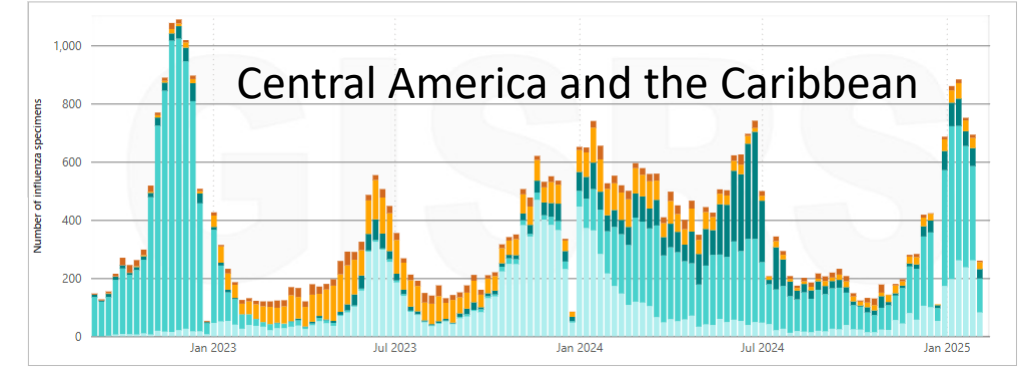
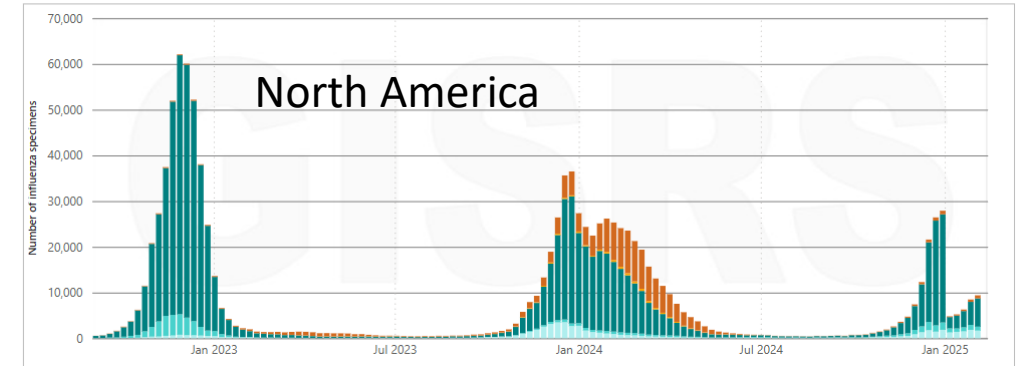
Number of specimens positive for influenza by subtype



Influenza activity in the Northern Hemisphere since Oct 2022 FluNet



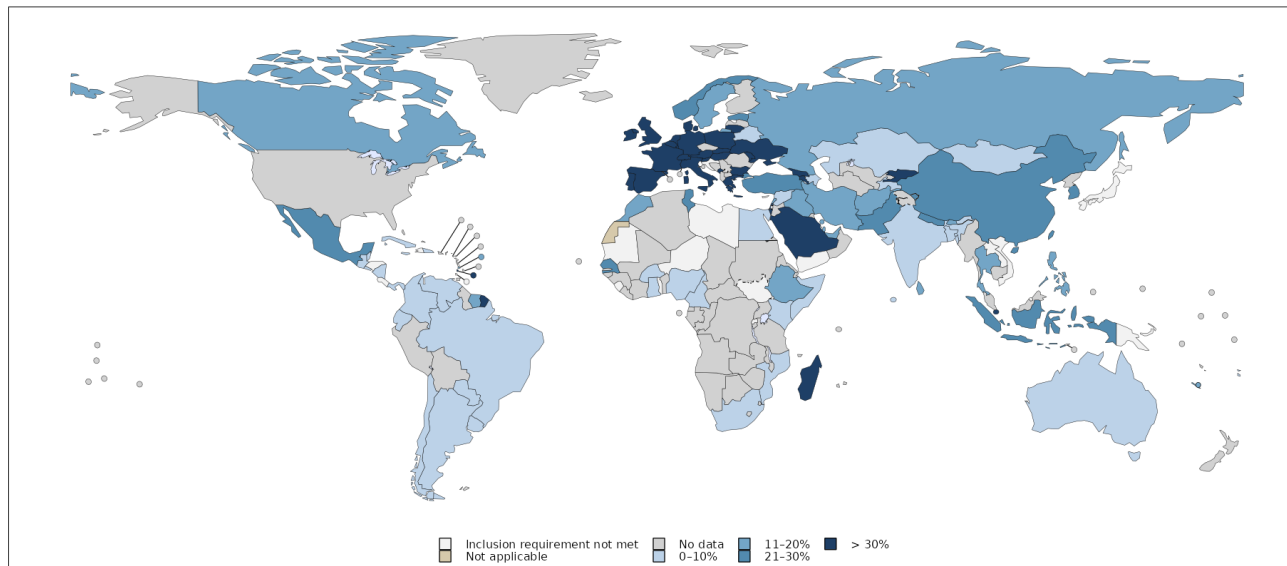
- Influenza subtype**
- ☒ Select all
 - ☒ Influenza B (lineage not determined)
 - ☒ Influenza B (Victoria)
 - ☒ Influenza B (Yamagata)
 - ☒ Influenza A not subtyped
 - ☒ Influenza A(H3)
 - ☒ Influenza A(H1N1)pdm09
 - ☒ Influenza A(H1)
 - ☒ Influenza A(H5)



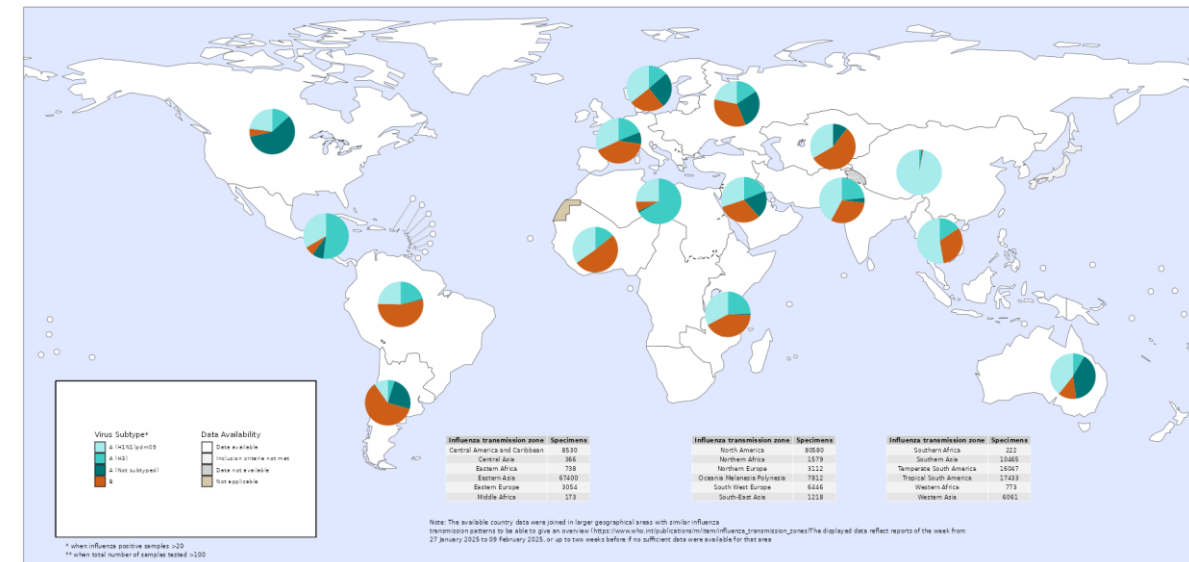
Seasonal influenza situation (27 Jan – 9 Feb 2025)

Percentage of specimens testing positive for influenza and virus type and subtype

Proportion of specimens testing positive for influenza



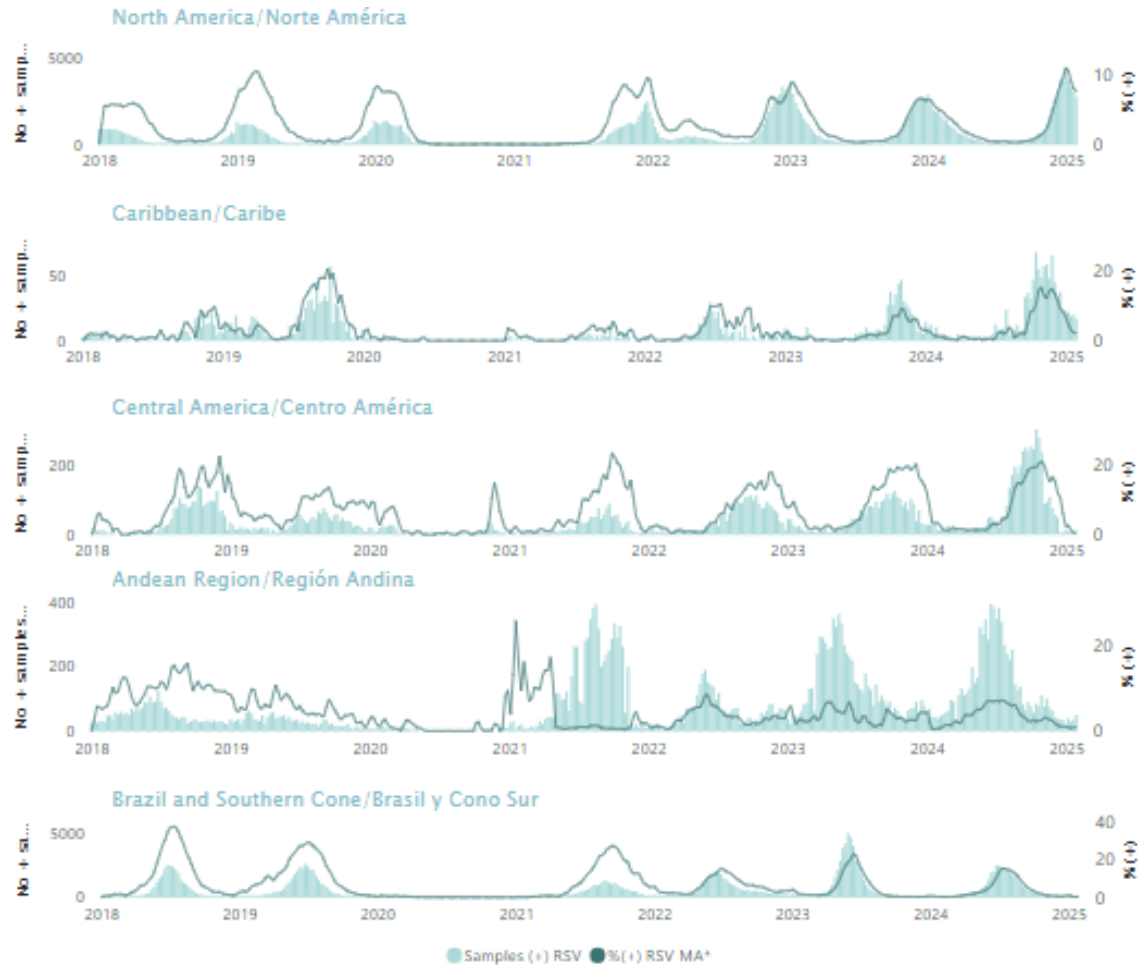
Specimens testing positive for influenza, by virus type and subtype



WHO weekly summary of situation monitoring

<https://www.who.int/teams/global-influenza-programme/surveillance-and-monitoring/influenza-updates/current-influenza-update>

Respiratory syncytial virus (RSV) activity in the Americas

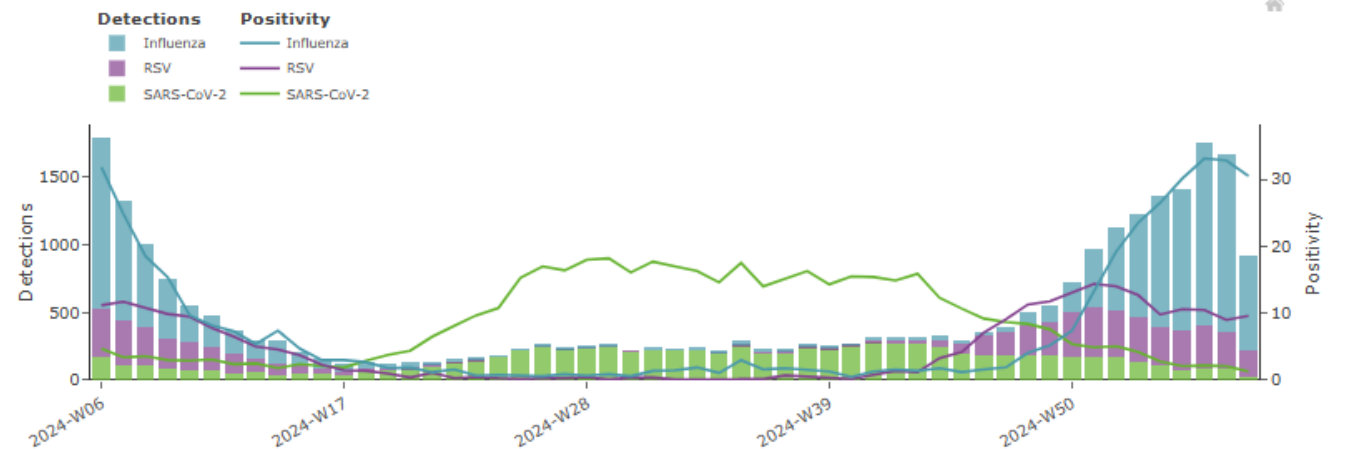
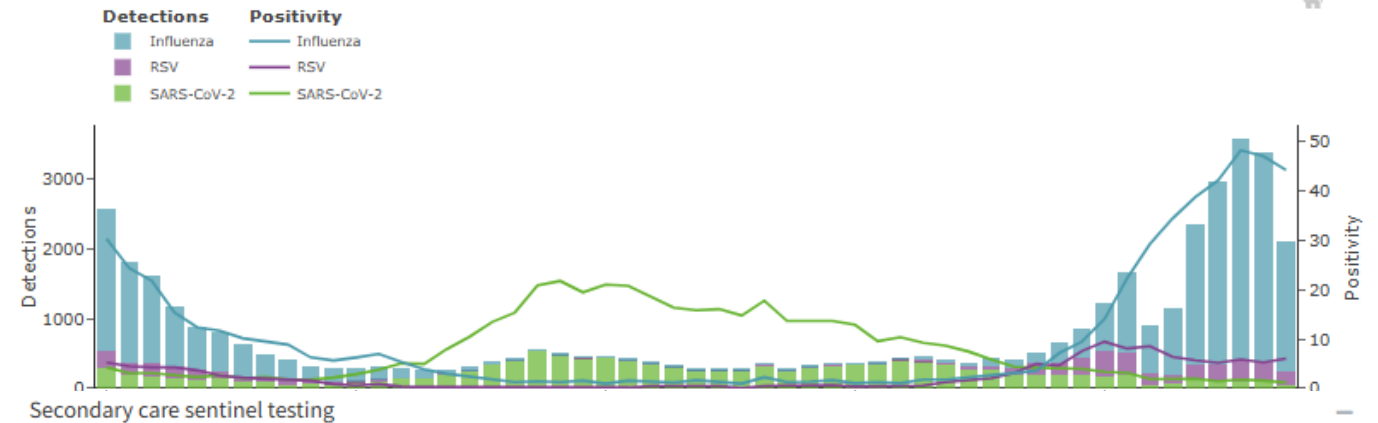


- **RSV activity** reached levels comparable to previous seasonal peaks but has started to decline in North America and continues to decline or remain low in other subregions.
- RSV epidemics are returning to pre-COVID-19 levels.

RSV activity in the WHO European Region

- **RSV positivity** among primary care sentinel and SARI patients remains **moderate but continues to plateau** after peaking in late December.
- The percentage of specimens from patients presenting to sentinel:
 - **ILI and ARI sites** was at 6% compared to 5% the prior week.
 - **SARI sites** was at 10% compared to 9% in the prior week.
- Children aged 0-4 years have the highest test positivity and comprise the highest number of cases for RSV.

Primary care sentinel testing



Resources

Integrated surveillance


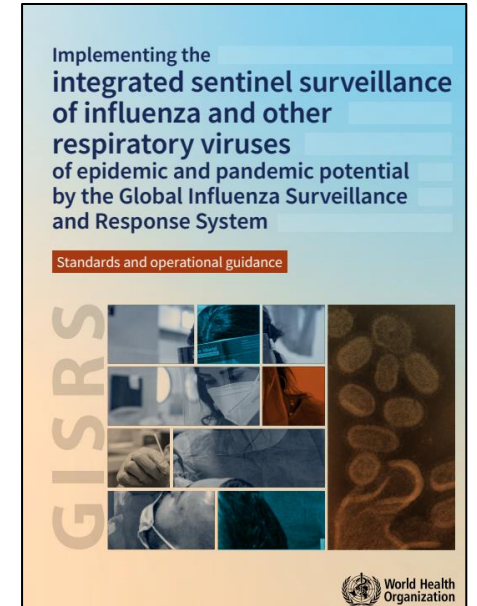
- [Implementing the integrated sentinel surveillance of influenza and other respiratory viruses of epidemic and pandemic potential by the Global Influenza Surveillance and Response System: standards and operational guidance](#)

Laboratory manual

- [Manual for the laboratory diagnosis and virological surveillance of influenza](#)

[Influenza surveillance outputs](#)

[Influenza surveillance updates](#) (updated weekly)



FEATURED MEETING REPORT | 12 FEBRUARY 2025

Influenza Update N° 513

In this update, in addition to the influenza surveillance information, that of the SARS-CoV-2 surveillance by the Global Influenza Surveillance and Response System (GISRS) through its associated sentinel and non-sentinel surveillance systems and reported...

[Download](#) [Read More](#)

Thank you and acknowledgements

Global Influenza Programme
WHO Regional and Country offices
National influenza surveillance officers
GISRS network