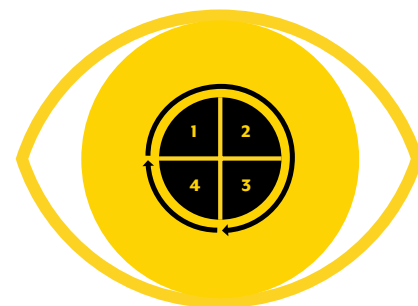


# Eye care in health systems: Guide for action Information Sheet



## What is the Eye care in health systems: Guide for action (the Guide)?

The Guide is a practical resource for countries to analyse, plan, implement and review integrated people-centred eye care (IPEC). More specifically, it outlines recommended activities towards the development of:

1. an **eye care strategic plan** that outlines priorities;
2. a **monitoring framework** linked to the eye care strategic plan; and
3. one or multiple **operational plans** outlining actions in support of the implementation of the eye care strategic plan.

## What are the four phases of the Guide?

There are four phases in the Guide which are:

**Phase 1: ANALYSE:** Objective: Carry out a situation analysis of the eye care sector to establish priorities

**Phase 2: PLAN** Objective: Use the priorities to develop an eye care strategic plan and related monitoring framework

**Phase 3: DO** Objective: Conduct operational planning to define activities, timelines and budget at national, subnational and institutional level to implement the eye care strategic plan

**Phase 4: REVIEW** Objective: Establish ongoing review processes to correct actions

Phase 1 (Analyse) and Phase 2 (Plan) are carried out periodically, for example once every 5 years, whereas Phase 3 (Do) is ongoing and Phase 4 (Review) is carried out annually (Figure 1).

Figure 1: The four phases of the Guide



World Health  
Organization

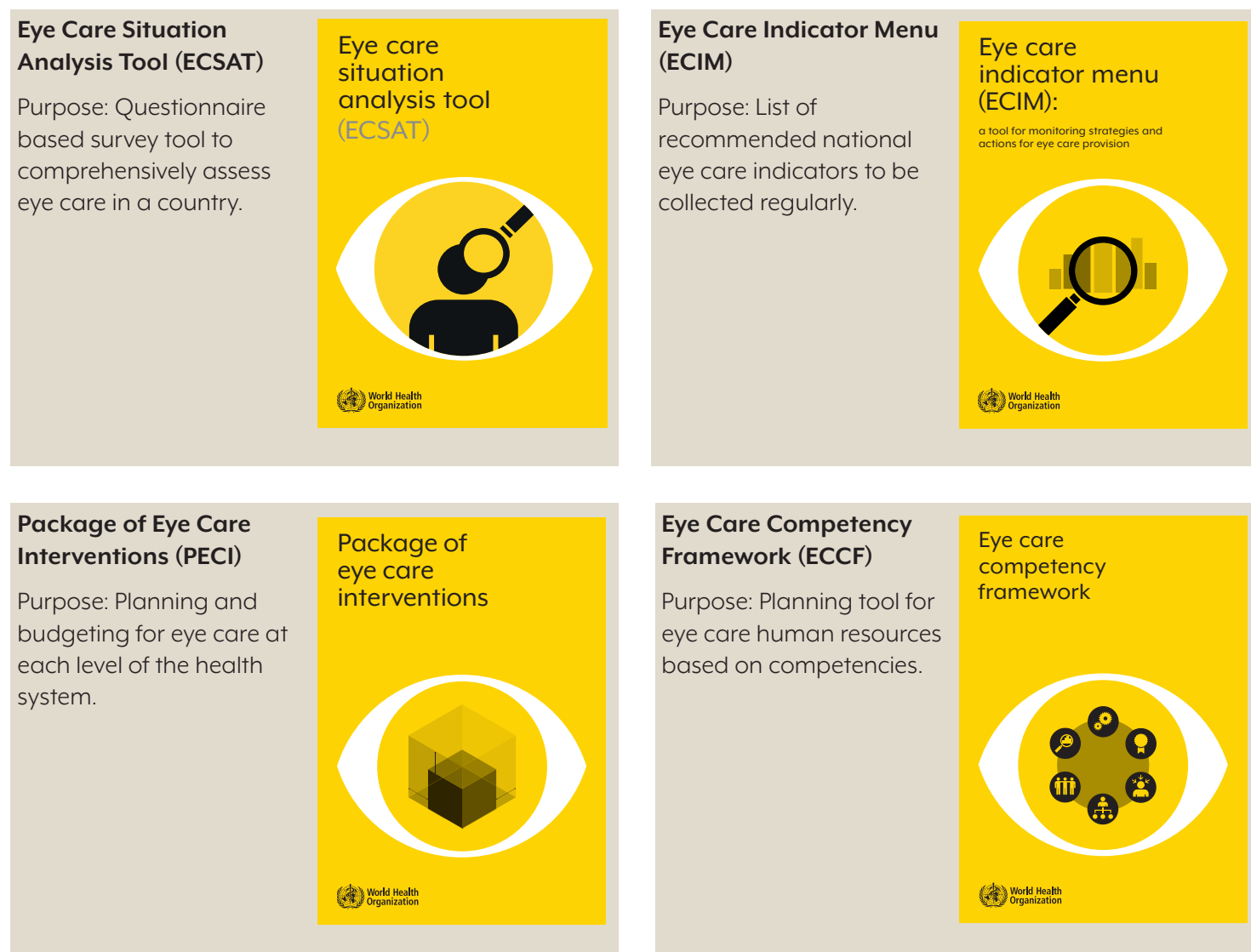
## What tools accompany the Guide?

Four additional tools have been developed by WHO, to accompany the Guide and support countries in their development of the plans and frameworks described above. The Guide was designed to be a dynamic resource, allowing the inclusion of additional tools at any time to facilitate the analysis, planning, implementation and review of IPEC in countries.

## Who is the Guide for?

The primary audiences for the Guide are governments of low- and middle-income countries and the agencies working with them to provide eye care to the people in need. It is designed for use at the national level but can also be used at the subnational level.

**Figure 2: The four accompanying tools to the Guide**



### For further information, please contact:

Vision and eye care Programme  
World Health Organization, Geneva

### Or visit the website:

<https://www.who.int/health-topics/blindness-and-vision-loss>

© World Health Organization 2022

Some rights reserved. This work is available under the CC BY-NC-SA 3.0 IGO licence.